

Letts's

No. 31

INDIAN AND COLONIAL

ROUGH DIARY

WITH A WEEK IN AN OPENING,

AUG 1 1905
FOR

1905

AUG 9 1905



Price 1s. 6d., or with Blotting, 2s. 6d.

Interleaved Blotting with Cloth Boards, 4s. 6d.

An Edition giving more space (No. 42) is published at 3s.;
CLOTH, Plain, Interleaved Blotting, 5s.

PUBLISHED FOR

Letts's Diaries Company, Limited,

BY

CASSELL & COMPANY, Limited, London, Paris, New York and

THE LARGEST FIRE OFFICE IN THE WORLD.

FIRE

LIFE

ROYAL INSURANCE BUILDINGS,
1, NORTH JOHN STREET,
LIVERPOOL.

ROYAL INSURANCE BUILDINGS,
28, LOMBARD STREET,
LONDON.



OVER
TOTAL FUNDS,
£12,000,000.

OVER
ANNUAL INCOME,
£3,900,000.

Absolute Security. Moderate Rates of Premium. Liberal Policy Conditions.

SUN FIRE OFFICE

HEAD OFFICE:

63, Threadneedle Street, London, E.C.

BRANCH OFFICES IN LONDON:

60, Charing Cross, S.W.

332, Oxford Street (corner of Vere Street), W.

40, Chancery Lane (Law Courts Branch), W.C.

42, Mincing Lane, E.C.



FUNDS IN HAND - - - **£2,535,800.**

INSURANCES ACCEPTED IN ALL PARTS OF THE WORLD.

THE STANDARD LIFE ASSURANCE COMPANY.

ESTABLISHED 1825.

REVENUE	- - - -	£1,390,000.
BONUS DECLARED	- - - -	£7,000,000.
ACCUMULATED FUNDS	- - - -	£11,000,000.
CLAIMS PAID	- - - -	£22,775,000.

BRANCH OFFICES & AGENCIES in THE BRITISH COLONIES, INDIA, and other countries abroad.

EDINBURGH: Head Office, 3, George Street.

LONDON: 83, King William Street, E.C.; and 3, Pall Mall East, S.W.

DUBLIN: 59, Dawson Street.

THE **LAW GUARANTEE**
AND **TRUST SOCIETY,**
LIMITED.

Capital Fully Subscribed, £2,000,000.
Paid up, £200,000. Reserve Fund, £190,000.

FIDELITY GUARANTEES.
MORTGAGE INSURANCE.
DEBENTURE INSURANCE.
LICENSE INSURANCE.
CONTINGENCY INSURANCE (re Defects in Title, Lost Documents, Missing Beneficiaries, &c.).
TRUSTEESHIPS under Wills, Marriage Settlements, &c., and for Debenture Holders.
SINKING FUND and
LEASEHOLD REDEMPTION POLICIES.
Head Office—49, CHANCERY LANE, LONDON, W.C.
City Office—56, MOORGATE STREET, E.C.



Security, £3,800,000.

Head Offices: 45, DALE STREET, LIVERPOOL.
76, KING WILLIAM STREET, LONDON, E.C.

Applications specially invited from Agents representing purely Life Companies.
Liberal Commission Allowed.

THE
BRITISH LAW FIRE
INSURANCE COMPANY,
LIMITED,

5, LOTHBURY, LONDON, E.C.

(With Branches throughout the Kingdom.)

Subscribed Capital - - ONE MILLION.
Paid-up Capital & Reserve - £168,000.

Gentlemen in a position to introduce Business are invited to undertake Agencies.

WESTERN ASSURANCE CO.

Incorporated 1851.

Head Office - - - TORONTO.

PAID-UP CAPITAL, £410,000. | TOTAL CASH ASSETS, £675,534.
PROFIT FOR YEAR 1903, £62,815.

FIRE. MARINE.

BRITISH AND FOREIGN OFFICES:

2, Change Alley, Cornhill, London, E.C.

BRANCH OFFICES:

100, King Street, Manchester. | Winchester House, Victoria Square,
142, St. Vincent Street, Glasgow. | Birmingham.
28, Mosley Street, Newcastle-on-Tyne. | Foster's Chambers, Small Street, Bristol.
7, Tithebarn Street, Liverpool.
Mercantile Branch—12, Mark Lane, London, E.C.

Fire and Marine Insurances at Home and Abroad granted at Current Rates
CLAIMS PROMPTLY AND LIBERALLY SETTLED.

Directors:

RT. HON. THE EARL OF ABERDEEN, G.C.M.G. (Chairman).
RT. HON. SIR J. H. KENNAWAY, BART., C.B., M.P.
ALFRED COOPER, Esq. (Messrs. Grahams & Co.).
HON. E. CABLE (Bird & Co.).

Applications for Agencies at Home and Foreign Towns invited.

W. B. MEKLE, Manager.

IN THE NECESSARY TOIL AND SUFFERING OF THIS LIFE
MAN CAN INVENT NOTHING NOBLER THAN HUMANITY!

THEN WHAT HIGHER
AIM CAN MAN ATTAIN
THAN CONQUEST
OVER HUMAN PAIN?

ENO'S 'FRUIT SALT'
prevents unnecessary
suffering and removes
disease only by natural
laws.

READ the 20 - page
pamphlet given with each
bottle!

THE LINE OF LIFE.



ENO'S FRUIT SALT.

ENO'S 'FRUIT SALT'
rectifies the Stomach and
makes the Liver laugh
with joy by natural means
(Or, in other words,
Gentleness does more than
Violence.)

Its universal success
proves the truth of the
above assertion.

MORAL FOR ALL:

"I need not be missed if another succeed me,
To reap down those fields which in spring I have
sown.
He who ploughed and who sowed is not missed by
the reaper;
He is only remembered by what he has done."

The effect of Eno's 'Fruit Salt' on any Disordered and Feverish condition is Simply Marvellous.
It is, in fact, Nature's Own Remedy, and an Unsurpassed One.

CAUTION.—Examine the Capsuls and see that it is marked ENO'S 'FRUIT SALT.' Otherwise you have the sincerest form of flattery—IMITATION.

Prepared only by J. C. ENO, Ltd., at the 'FRUIT SALT' WORKS, LONDON, S.E., by J. C. ENO'S Patent.

Letts's

INDIAN AND COLONIAL DIARY AND ALMANAC

FOR

1905

BEING THE FIFTH YEAR OF THE REIGN OF HIS MAJESTY KING EDWARD VII.—(Accession, January 22, 1901).

FOLIO SERIES.

No.		Plain.	Inter. Blotting.	Blotting Cloth.
No. 31	Week in opening	1 6	2 6	4 6
„ 32	Week on page (pages divided perpendicularly)	—	1 6	—
„ 37	Week on page cloth back	—	1 0	—
„ 39	Week in opening cloth back	—	1 6	—
„ 41	One day on page cloth back	5 0	—	—
„ „	One day on page bound cloth	6 6	—	8 0
„ 42	Two days on page cloth back	3 0	—	—
„ „	Two days on page bound cloth	4 0	—	5 0
„ 48	Two days on page cloth back	—	3 6	—

PUBLISHED FOR

LETT'S DIARIES COMPANY, LIMITED,

BY

CASSELL & COMPANY, LIMITED,

LONDON, PARIS, NEW YORK AND MELBOURNE.

[ALL RIGHTS RESERVED.]

Letts's Diaries can be obtained at all the principal Booksellers throughout the World.

For a Full Description whereby to obtain a Counterpart of this Diary, see back of Order Form.

Hazell, Watson & Voeck, Ltd., Printers, London & Aylesbury.

CALENDAR FOR 1905.

JANUARY, 1905. FIRST MONTH—THIRTY-ONE DAYS.				FEBRUARY, 1905. SECOND MONTH—TWENTY-EIGHT DAYS.				MARCH, 1905. THIRD MONTH—THIRTY-ONE DAYS.			
M. W. Y.	SUNDAYS, &c.	High Water at Lon. Bridge.		M. W. Y.	SUNDAYS, &c.	High Water at Lon. Bridge.		M. W. Y.	SUNDAYS, &c.	High Water at Lon. Bridge.	
		A.M.	P.M.			A.M.	P.M.			A.M.	P.M.
1 S.	1 after Christmas. Circumcision, New Year's Day	9 40	10 15	1 W.	32 Purification of V. Mary	11 43	—	1 W.	60 St. David	9 59	10 44
2 M.		10 51	11 25	2 Th.		0 18	0 47	2 Th.	61	11 24	—
3 Tu.		11 59	—	3 F.		1 12	1 36	3 F.	62	0 0	0 32
4 W.		0 28	0 55	4 S.		1 58	2 10	4 S.	63	0 59	1 21
5 Th.		1 20	1 46	5 S.	36 5 after Epiphany	2 37	2 54	5 S.	64 Quinquagesima Sun.	1 42	2 2
6 F.	6 Epiphany. Twelfth Day	2 9	2 30	6 M.		3 12	3 29	6 M.	65	2 20	2 37
7 S.		2 50	3 10	7 Tu.		3 45	4 2	7 Tu.	66 Shrove Tuesday	2 52	3 6
8 S.	8 after Epiphany	3 29	3 47	8 W.		4 18	4 34	8 W.	67 Ash Wednesday. Lent begins. Mohammedan Year 1323 begins	3 21	3 35
9 M.		4 6	4 24	9 Th.		4 50	5 5	9 Th.	68	3 51	4 7
10 Tu.		4 42	5 0	10 F.		5 20	5 36	10 F.	69	4 22	4 37
11 W.		5 17	5 34	11 S.		5 52	6 10	11 S.	70	4 52	5 6
12 Th.		5 52	6 11	12 S.	43 6 after Epiphany	6 30	6 51	12 S.	71 1 in Lent. Ember Wk.	5 22	5 38
13 F.		6 30	6 51	13 M.		7 15	7 41	13 M.	72	5 56	6 15
14 S.		7 14	7 38	14 Tu.		8 10	8 43	14 Tu.	73	6 37	7 3
15 S.	15 after Epiphany	8 6	8 37	15 W.		9 25	10 6	15 W.	74 Ember Day	7 31	8 3
16 M.		9 11	9 48	16 Th.		10 48	11 26	16 Th.	75	8 40	9 24
17 Tu.		10 25	11 0	17 F.		—	0 1	17 F.	76 St. Patrick. Ember Day	10 10	10 52
18 W.		11 35	—	18 S.		0 32	0 59	18 S.	77 Ember Day	11 30	—
19 Th.		0 6	0 34	19 S.	50 Septuagesima Sunday	1 23	1 46	19 S.	78 2 in Lent	0 5	0 35
20 F.		0 58	1 21	20 M.		2 9	2 31	20 M.	79	1 0	1 24
21 S.		1 44	2 7	21 Tu.		2 53	3 15	21 Tu.	80	1 47	2 10
22 S.	22 after Epiphany. King's Accession, 1901	2 28	2 50	22 W.		3 37	3 58	22 W.	81	2 31	2 51
23 M.	Proc., King Edward VII.	3 11	3 33	23 Th.		4 20	4 42	23 Th.	82	3 12	3 35
24 Tu.	24 Conversion of St. Paul	3 54	4 16	24 F.	55 St. Matthias, Ap.	5 3	5 25	24 F.	83	3 58	4 21
25 W.		4 39	5 1	25 S.		5 47	6 10	25 S.	84 Annunciation. Lady	4 43	5 4
26 Th.		5 24	5 47	26 S.	57 Sexagesima Sunday	6 34	7 0	26 S.	85 3 in Lent	5 25	5 48
27 F.		6 11	6 35	27 M.		7 28	7 59	27 M.	86	6 11	6 36
28 S.		7 0	7 27	28 Tu.		8 34	9 15	28 Tu.	87	7 3	7 32
29 S.	29 after Epiphany	7 56	8 28	29 W.		—	—	29 W.	88	8 7	8 46
30 M.		9 4	9 45	30 Th.		—	—	30 Th.	89	9 30	10 15
31 Tu.		10 25	11 5	31 F.		—	—	31 F.	90	10 58	11 34

APRIL, 1905. FOURTH MONTH—THIRTY DAYS.				MAY, 1905. FIFTH MONTH—THIRTY-ONE DAYS.				JUNE, 1905. SIXTH MONTH—THIRTY DAYS.			
M. W. Y.	SUNDAYS, &c.	High Water at Lon. Bridge.		M. W. Y.	SUNDAYS, &c.	High Water at Lon. Bridge.		M. W. Y.	SUNDAYS, &c.	High Water at Lon. Bridge.	
		A.M.	P.M.			A.M.	P.M.			A.M.	P.M.
1 S.	91	—	0 6	1 M.	121 SS. Philip & James, [App.]	—	0 19	1 Th.	152 Ascension Day	0 39	0 59
2 S.	92 4 in Lent	0 33	0 54	2 Tu.	122	0 39	0 58	2 F.	153	1 19	1 38
3 M.	93	1 14	1 33	3 W.	123	1 16	1 34	3 S.	154 Prince of Wales born, [1865]	1 56	2 13
4 Tu.	94	1 51	2 9	4 Th.	124	1 52	2 8	4 S.	155 Sunday after Ascension	2 29	2 46
5 W.	95	2 24	2 38	5 F.	125	2 23	2 39	5 M.	156	3 5	3 23
6 Th.	96	2 53	3 8	6 S.	126	2 55	3 10	6 Tu.	157	3 43	4 2
7 F.	97	3 22	3 37	7 S.	127 2 after Easter	3 26	3 43	7 W.	158	4 21	4 41
8 S.	98	3 53	4 9	8 M.	128	4 1	4 18	8 Th.	159	5 2	5 24
9 S.	99 5 in Lent	4 24	4 40	9 Tu.	129	4 36	4 54	9 F.	160	5 48	6 15
10 M.	100	4 56	5 13	10 W.	130	5 13	5 34	10 S.	161	6 43	7 12
11 Tu.	101	5 31	5 51	11 Th.	131	5 57	6 24	11 S.	162 Whit Sunday. St. Barnabas, Ap. Ember Wk.	7 42	8 15
12 W.	102	6 13	6 38	12 F.	132	6 53	7 24	12 M.	163 Whitsun Monday	8 50	9 25
13 Th.	103	7 7	7 38	13 S.	133	7 58	8 33	13 Tu.	164 Whitsun Tuesday	9 59	10 32
14 F.	104	8 14	8 55	14 S.	134 3 after Easter	9 13	9 54	14 W.	165 Ember Day	11 5	11 38
15 S.	105	9 39	10 21	15 M.	135	10 30	11 3	15 Th.	166	—	0 8
16 S.	106 Palm Sunday	10 59	11 35	16 Tu.	136	11 34	—	16 F.	167 Ember Day	0 35	1 2
17 M.	107	—	0 6	17 W.	137	0 4	0 30	17 S.	168 Ember Day	1 29	1 53
18 Tu.	108	0 32	0 56	18 Th.	138	0 54	1 18	18 S.	169 Trinity Sunday	2 16	2 40
19 W.	109	1 19	1 43	19 F.	139	1 44	2 8	19 M.	170	3 2	3 26
20 Th.	110 Maundy Thursday	2 5	2 28	20 S.	140	2 30	2 54	20 Tu.	171	3 48	4 10
21 F.	111 Good Friday	2 51	3 13	21 S.	141 4 after Easter	3 18	3 41	21 W.	172	3 42	4 52
22 S.	112 Easter Even	3 36	3 58	22 M.	142	4 3	4 26	22 Th.	173 Corpus Christi	5 12	5 33
23 S.	113 Easter Day. St. George	4 21	4 43	23 Tu.	143	4 48	5 10	23 F.	174	5 54	6 17
24 M.	114 Easter Monday	5 6	5 29	24 W.	144 Qn. Victoria born, 1819	5 33	5 56	24 S.	175 St. John Baptist	6 39	7 3
25 Tu.	115 Easter Tuesday. St. Mark, Evan.	5 53	6 17	25 Th.	145	6 19	6 45	25 S.	176 1 after Trinity	7 27	7 52
26 W.	116	6 43	7 11	26 F.	146	7 13	7 42	26 M.	177	8 21	8 52
27 Th.	117	7 42	8 16	27 S.	147	8 12	8 46	27 Tu.	178	9 26	9 58
28 F.	118	8 55	9 36	28 S.	148 Rogation Sunday	9 23	9 57	28 W.	179	10 30	11 0
29 S.	119	10 16	10 52	29 M.	149 Rogation Day	10 30	11 1	29 Th.	180 St. Peter, Ap.	11 30	11 57
30 S.	120 Low Sunday—1 after Easter	11 24	11 54	30 Tu.	150 Rogation Day	11 30	11 56	30 F.	181	—	0 22
				31 W.	151 Rogation Day	—	0 19				

CHRONOLOGICAL NOTES.
 Golden Number 6 Dom. Letter A.
 Epact ... 24 Roman Indiction 3
 Solar Cycle ... 10 Julian Period 6618

ECLIPSES IN 1905.
 Of the Sun, Two; Moon, Two.

I. FEBRUARY 19. Partial Eclipse of the Moon. Visible in Europe, Asia, Africa, and Australia.
 Moon enters shadow ... 5h 54m p.m.
 Moon leaves shadow ... 8h 6m p.m.
 The Moon rises at London at 5h 16m p.m.

II. MARCH 6. Annular Eclipse of the Sun. The line of Annular Eclipse passes South of Kerguelen, crosses Australia from the Head of the Great Bight to Port Bowen, and thence to the Loyalty Isles. Visible as a Partial Eclipse in South-East Africa, South of Madagascar,

ECLIPSES—contd.
 Sumatra and Borneo, the whole of Australia and New Zealand.

Eclipse Long. Lat.
 Begins .. 2h 19m a.m., 53° E., 38° S.
 Ends .. 8h 6m a.m., 152° E., 5° S.

At Begins Ends
 Perth .. 1h 32m a.m., 3h 5m p.m.
 Adelaide .. 1h 52m p.m., 4h 55m p.m.
 Melbourne .. 2h 32m p.m., 5h 21m p.m.
 Sydney .. 2h 50m p.m., 5h 31m p.m.
 (Standard Time.)

In South-East Africa the Sun rises eclipsed.

III. AUGUST 15. Partial Eclipse of the Moon. The whole Eclipse will be visible in North and South America and Western Europe and Africa; the earlier phases only in Eastern Europe and Africa.
 Moon enters shadow 2h 39m a.m.
 Moon leaves shadow 4h 43m a.m.
 Moon sets at London, 4h 53m a.m.

ECLIPSES—contd.
 IV. AUGUST 30. Total Eclipse of the Sun. Total Eclipse visible on a belt running from the South-East of Manitoba over the South of Hudson's Bay and Labrador, across the Atlantic to Leon in Spain, the Gulf of Sidra, near Thebes and Mecca, to the South-East of Arabia. Visible as a Partial Eclipse in the East of North America, the North Atlantic, Europe, North of Africa, and West of Asia.

Eclipse Long. Lat.
 Begins .. 10h 38m a.m., 76° W., 38° N.
 Ends .. 3h 37m p.m., 37° E., 6° N.

At Begins Ends
 London .. 11h 40m a.m., 2h 15m p.m.
 Liverpool .. 11h 44m a.m., 2h 5m p.m.
 Edinburgh .. 11h 49m a.m., 2h 4m p.m.
 Dublin .. 11h 50m a.m., 2h 5m p.m.
 Paris .. 11h 54m a.m., 2h 25m p.m.
 Berlin .. 12h 10m p.m., 2h 23m p.m.
 Marseilles .. 11h 52m a.m., 2h 29m p.m.
 Montreal .. 10h 40m a.m., 10h 40m p.m.

CALENDAR FOR 1905.

JULY, 1905. SEVENTH MONTH—THIRTY-ONE DAYS.

M. W. Y.	SUNDAYS, &c.	High Water at Lon. Bridge.	
		A.M.	P.M.
1 S. 182		0 45	1 5
2 S. 183	2 after Trinity	1 26	1 48
3 M. 184		2 8	2 27
4 Tu. 185	Declaration of American Independence	2 46	3 7
5 W. 186		3 27	3 48
6 Th. 187		4 9	4 31
7 F. 188		4 52	5 14
8 S. 189		5 37	6 2
9 S. 190	3 after Trinity	6 28	6 55
10 M. 191		7 23	7 52
11 Tu. 192		8 22	8 55
12 W. 193		9 32	10 8
13 Th. 194		10 43	11 17
14 F. 195		11 51	—
15 S. 196		0 23	0 51
16 S. 197	4 after Trinity	1 17	1 43
17 M. 198		2 7	2 30
18 Tu. 199		2 50	3 11
19 W. 200		3 32	3 52
20 Th. 201		4 12	4 31
21 F. 202		4 49	5 7
22 S. 203		5 25	5 44
23 S. 204	5 after Trinity	6 3	6 23
24 M. 205		6 43	7 4
25 Tu. 206	St. James, Ap.	7 28	7 53
26 W. 207		8 10	8 51
27 Th. 208		9 26	10 4
28 F. 209		10 39	11 12
29 S. 210		11 44	—
30 S. 211	5 after Trinity	0 13	0 38
31 M. 212		1 3	1 27

AUGUST, 1905. EIGHTH MONTH—THIRTY-ONE DAYS.

M. W. Y.	SUNDAYS, &c.	High Water at Lon. Bridge.	
		A.M.	P.M.
1 Tu. 213		1 49	2 9
2 W. 214		2 30	2 50
3 Th. 215		3 10	3 32
4 F. 216		3 53	4 14
5 S. 217		4 37	4 59
6 S. 218	7 after Trinity	5 22	5 45
7 M. 219		6 9	6 34
8 Tu. 220		7 0	7 27
9 W. 221	Coronation of King Edward VII., 1902	7 56	8 29
10 Th. 222		9 5	9 45
11 F. 223		10 24	11 3
12 S. 224		11 40	—
13 S. 225	8 after Trinity	0 14	0 43
14 M. 226		1 10	1 35
15 Tu. 227		1 57	2 16
16 W. 228		2 35	2 54
17 Th. 229		3 12	3 30
18 F. 230		3 48	4 5
19 S. 231		4 23	4 39
20 S. 232	9 after Trinity	4 54	5 10
21 M. 233		5 25	5 42
22 Tu. 234		6 0	6 19
23 W. 235		6 41	7 5
24 Th. 236	St. Bartholomew, Ap.	7 30	7 58
25 F. 237		8 30	9 6
26 S. 238		9 47	10 29
27 S. 239	10 after Trinity	11 7	11 42
28 M. 240		—	0 12
29 Tu. 241		0 38	1 1
30 W. 242		1 25	1 48
31 Th. 243		2 8	2 29

SEPTEMBER, 1905. NINTH MONTH—THIRTY DAYS.

M. W. Y.	SUNDAYS, &c.	High Water at Lon. Bridge.	
		A.M.	P.M.
1 F. 244		2 50	3 12
2 S. 245		3 34	3 56
3 S. 246	11 after Trinity	4 18	4 40
4 M. 247		5 2	5 23
5 Tu. 248		5 46	6 10
6 W. 249		6 35	7 2
7 Th. 250		7 32	8 5
8 F. 251		8 43	9 26
9 S. 252		10 11	10 52
10 S. 253	12 after Trinity	11 29	—
11 M. 254		0 2	0 32
12 Tu. 255		0 57	1 19
13 W. 256		1 40	1 58
14 Th. 257		2 15	2 32
15 F. 258		2 47	3 4
16 S. 259		3 21	3 56
17 S. 260	13 after Trinity. Ember [Week]	3 52	4 8
18 M. 261		4 23	4 38
19 Tu. 262		4 52	5 7
20 W. 263	Ember Day	5 23	5 40
21 Th. 264	St. Matthew, Ap.	6 1	6 23
22 F. 265	Ember Day	6 47	7 15
23 S. 266	Ember Day	7 46	8 22
24 S. 267	14 after Trinity	9 1	9 51
25 M. 268		10 31	11 9
26 Tu. 269		11 44	—
27 W. 270		0 13	0 38
28 Th. 271		1 1	1 24
29 F. 272	St. Michael & All Angels	1 45	2 6
30 S. 273	Jewish Year 5666 beg.	2 28	2 49

OCTOBER, 1905. TENTH MONTH—THIRTY-ONE DAYS.

M. W. Y.	SUNDAYS, &c.	High Water at Lon. Bridge.	
		A.M.	P.M.
1 S. 274	15 after Trinity	3 10	3 32
2 M. 275		3 54	4 16
3 Tu. 276		4 39	5 1
4 W. 277		5 22	5 46
5 Th. 278		6 12	6 39
6 F. 279		7 10	7 45
7 S. 280		8 24	9 7
8 S. 281	16 after Trinity	9 51	10 33
9 M. 282		11 11	11 44
10 Tu. 283		—	0 13
11 W. 284		0 36	0 57
12 Th. 285		1 15	1 35
13 F. 286		1 54	2 7
14 S. 287		2 21	2 36
15 S. 288	17 after Trinity	2 52	3 7
16 M. 289		3 21	3 37
17 Tu. 290		3 53	4 8
18 W. 291	St. Luke, Evan.	4 22	4 37
19 Th. 292		4 55	5 13
20 F. 293		5 32	5 53
21 S. 294		6 16	6 43
22 S. 295	18 after Trinity	7 15	7 50
23 M. 296		8 30	9 15
24 Tu. 297		9 57	10 36
25 W. 298		11 11	11 43
26 Th. 299		—	0 9
27 F. 300		0 34	0 58
28 S. 301	SS. Simon & Jude, App.	1 20	1 42
29 S. 302	19 after Trinity	2 4	2 26
30 M. 303	Ramadan (Turk. Lent)	2 48	3 11
31 Tu. 304	[begins]	3 34	3 56

NOVEMBER, 1905. ELEVENTH MONTH—THIRTY DAYS.

M. W. Y.	SUNDAYS, &c.	High Water at Lon. Bridge.	
		A.M.	P.M.
1 W. 305	All Saints' Day	4 19	4 41
2 Th. 306		5 4	5 29
3 F. 307		5 54	6 20
4 S. 308		6 49	7 22
5 S. 309	20 after Trinity	7 57	8 35
6 M. 310		9 17	9 59
7 Tu. 311		10 35	11 9
8 W. 312		11 39	—
9 Th. 313	King Edward VII. [born, 1841]	0 5	0 26
10 F. 314		0 45	1 4
11 S. 315		1 22	1 39
12 S. 316	21 after Trinity	1 54	2 10
13 M. 317		2 24	2 40
14 Tu. 318		2 56	3 12
15 W. 319		3 29	3 45
16 Th. 320		4 1	4 18
17 F. 321		4 35	4 54
18 S. 322		5 12	5 34
19 S. 323	22 after Trinity	5 59	6 24
20 M. 324		6 53	7 24
21 Tu. 325		8 1	8 41
22 W. 326		9 21	10 0
23 Th. 327		10 35	11 6
24 F. 328		11 37	—
25 S. 329		0 4	0 30
26 S. 330	23 after Trinity	0 54	1 19
27 M. 331		1 43	2 6
28 Tu. 332		2 30	2 55
29 W. 333		3 18	3 42
30 Th. 334	St. Andrew, Ap.	4 4	4 27

DECEMBER, 1905. TWELFTH MONTH—THIRTY-ONE DAYS.

M. W. Y.	SUNDAYS, &c.	High Water at Lon. Bridge.	
		A.M.	P.M.
1 F. 335	Queen Alexandra born, 1844	4 50	5 12
2 S. 336		5 36	6 2
3 S. 337	1 in Advent	6 28	6 55
4 M. 338		7 23	7 52
5 Tu. 339		8 25	9 0
6 W. 340		9 37	10 13
7 Th. 341		10 44	11 15
8 F. 342		11 43	—
9 S. 343		0 8	0 28
10 S. 344	2 in Advent	0 49	1 9
11 M. 345		1 28	1 46
12 Tu. 346		2 2	2 19
13 W. 347		2 36	2 52
14 Th. 348		3 10	3 28
15 F. 349		3 46	4 5
16 S. 350		4 23	4 43
17 S. 351	3 in Advent. Emb. Wk.	5 3	5 24
18 M. 352		5 47	6 13
19 Tu. 353		6 40	7 8
20 W. 354	Ember Day	7 37	8 9
21 Th. 355	St. Thomas, Ap.	8 42	9 19
22 F. 356	Ember Day	9 56	10 31
23 S. 357	Ember Day	11 4	11 36
24 S. 358	4 in Advent	—	0 7
25 M. 359	Christmas Day	0 36	1 3
26 Tu. 360	St. Stephen, M. Boxing [Day]	1 30	1 56
27 W. 361	St. John, Evan.	2 20	2 43
28 Th. 362	Innocents' Day	3 6	3 29
29 F. 363		3 52	4 14
30 S. 364		4 35	4 56
31 S. 365	1 after Christmas	5 17	5 37

INDIAN GOVERNORS.
***INDIA—Viceroy and Governor-General—**
 The Rt. Hon. Lord Curzon, G.M.S.I.,
 G.M.I.E. (Rs. 20,900).
Madras—Governor—Lord Amphill,
 G.C.I.E. (Rs. 10,000).
Bombay—Governor—Lord Lamington,
 G.C.M.G., G.C.I.E. (Rs. 10,000).
Bengal—Lieutenant-Governor—Sir A.
 H. Leith Fraser, K.C.S.I. (Rs. 8,333).
Punjab—Lieutenant-Governor—Sir C.
 M. Rivaz, K.C.S.I. (Rs. 8,333).
United Provinces of Agra and Oudh—
Lieutenant-Governor—Sir J. D. La
 Touche, K.C.S.I. (Rs. 8,333).
Central Prov.—Chief Commissioner—
 The Hon. J. P. Hewett, C.S.I., C.I.E.
 (Rs. 4,166).
 * Salaries are (excluding allowances) stated in
 Rupees per mensem.

INDIAN GOVERNORS—contd.
Burmah—Lieutenant-Governor—Sir
 H. S. Barnes, K.C.S.I., K.C.V.O. (Rs.
 8,333).
Assam—Chief Commissioner—The
 Hon. J. B. Fuller, C.S.I., C.I.E. (Rs.
 4,166).
TIDAL CONSTANTS.
 Note.—To find the approximate time of
 High Water at each of the following places
 for any day during 1905, add or subtract
 from the time of High Water at London
 Bridge given in the side column in the
 Calendar.

	h. m.
Bombay..	sub. 2 23
Calcutta ..	add 0 4
Shanghai ..	sub. 0 25
Rangoon Town ..	add 2 38
River Entrance ..	1 34

TIDAL CONSTANTS—contd.

	h. m.
Hongkong ..	sub. 4 53
Singapore ..	sub. 3 23
Goa ..	add 0 5
Point de Galle ..	sub. 3 39
Karachi ..	sub. 4 57
Madras ..	add 2 32
Port Natal ..	sub. 0 11
Malta ..	add 0 42
Gibraltar ..	sub. 0 42
Table Bay ..	add 0 22
Port Elizabeth ..	sub. 1 40
Yokohama ..	sub. 3 32
Penang ..	sub. 1 58
Valparaiso ..	add 4 26
Buenos Ayres ..	add 4 2
Monte Video ..	sub. 0 32

EXAMPLES.—Required the time of afternoon
 High Water at Calcutta and Singapore on January
 1st, 1905.
 Time of afternoon High Water in Calendar is
 10h 15m; the time at Calcutta is 0h 4m added to
 10h 15m = 10h 19m; and time at Singapore is 3h 23m
 subtracted from 10h 15m = 6h 52m.

GENERAL INFORMATION, &c.

THE ROYAL FAMILY.

Date of Birth and Age in 1905.

King Edward VII.	Nov. 9, 1841	64
Queen Alexandra	Dec. 1, 1844	61
Prince of Wales	June 3, 1865	40
<i>(Married July 6, 1893, to Princess Victoria Mary of Teck, born May 26, 1867.)</i>		
<i>Issue—</i>		
Edward Albert	June 23, 1894	11
Albert Frederick	Dec. 14, 1895	10
Victoria Alexandra	April 25, 1897	8
Henry William	March 31, 1900	5
George Edward	Dec. 20, 1902	3
Princess Louise Victoria	Feb. 20, 1867	38
<i>(Married July 27, 1889, to the Duke of Fife), 2 children.</i>		
Princess Victoria	July 6, 1868	37
Princess Maud Charlotte	Nov. 26, 1869	36
<i>(Married July 22, 1896, to Prince Charles of Denmark), 1 child.</i>		
Princess Helena	May 25, 1846	59
Princess Louise	March 18, 1848	57
Duke of Connaught	May 1, 1850	55
Princess Beatrice	April 14, 1857	48

THE BRITISH EMPIRE.

COLONIAL GOVERNORS.

AUSTRALASIAN.

GOVERNOR-GEN. OF THE COMMONWEALTH OF AUSTRALIA—The Rt. Hon. Lord Northcote, G.C.M.G., G.C.I.E., C.B. (£10,000).
 FIJI ISLANDS AND WESTERN PACIFIC.—E. Ferdinand im Thurn, C.B., C.M.G. (£3,000).
 NEW SOUTH WALES.—Admiral Sir H. H. Rawson, K.C.B. (£5,000).
 NEW ZEALAND.—The Rt. Hon. Lord Plunket, K.C.V.O. (£5,000).
 QUEENSLAND.—Major-Gen. Sir H. C. Chermiside, R.E., G.C.M.G., C.B. (£5,000).
 SOUTH AUSTRALIA.—Sir G. Ruthven Le Hunte, K.C.M.G. (£4,000).
 TASMANIA.—Sir G. Strickland, K.C.M.G. (£3,500).
 VICTORIA.—Major-Gen. The Hon. Sir Reginald Talbot, K.C.B. (£5,000).
 WESTERN AUSTRALIA.—Admiral Sir F. G. D. Bedford, G.C.B. (£4,000).

AFRICAN.

HIGH COMMISSIONER FOR SOUTH AFRICA AND GOVERNOR OF THE TRANSVAAL AND ORANGE RIVER COLONY—The Rt. Hon. Viscount Milner, G.C.B., G.C.M.G. (£3,000 and £8,000).
 CAPE OF GOOD HOPE—The Hon. Sir W. F. Hely-Hutchinson, G.C.M.G. (£8,000).
 THE TRANSVAAL—Lieut.-Governor, The Hon. Sir A. Lawley, K.C.M.G. (£4,500, with £1,500 allowance).
 ORANGE RIVER COLONY—Lieutenant-Governor, Major Sir H. J. Goold-Adams, K.C.M.G., C.B. (£3,500).
 BECHUANALAND PROTECTORATE—R. C. Williams, Esq., C.M.G. (£1,000).
 BASUTOLAND—H. C. Sloley, Esq. (£1,500).
 NATAL—Col. Sir H. E. McCallum, G.C.M.G. (£5,000).
 ST. HELENA—Lieut.-Col. H. L. Gallwey, C.M.G., D.S.O. (£800).
 SIERRA LEONE—L. Probyn, Esq., C.M.G. (£2,000).
 GAMBIA—Sir G. C. Denton, K.C.M.G. (£1,500).
 GOLD COAST—John Pickersgill Rodger, C.M.G. (£3,000).
 LAGOS—† (£2,500).
 N. NIGERIA—Brig.-Gen. Sir F. J. D. Lugard, K.C.M.G., C.B. (£2,500).
 S. NIGERIA—Walter Egerton, C.M.G. (£2,500).

NORTH AMERICAN.

CANADA—The Rt. Hon. The Earl of Minto, G.C.M.G. (\$50,000).
 PROVINCES OF CANADA:—
 ONTARIO—W. Mortimer Clark, Esq., K.C. (\$10,000).
 QUEBEC—Sir L. A. Jetté, K.C.M.G. (\$10,000).

† New appointments pending at time of going to press.

THE BRITISH EMPIRE—contd.

NOVA SCOTIA—The Hon. A. G. Jones, (£9,000).
 NEW BRUNSWICK—The Hon. J. B. Snowball (£9,000).
 MANITOBA—Sir D. H. McMillan, K.C.M.G. (£10,000).
 BRITISH COLUMBIA—The Hon. Sir H. G. J. de Lotbinière, K.C.M.G. (£9,000).
 PRINCE EDWARD ISLAND—P. A. McIntyre, Esq., M.D. (£7,000).
 NORTH-WEST TERRITORIES—A. E. Forget, Esq. (£7,000).
 NEWFOUNDLAND—Sir W. MacGregor, M.D., K.C.M.G., C.B. (£10,000).

WEST INDIAN.

JAMAICA—Sir J. A. Swettenham, K.C.M.G. (£5,000).
 BRITISH HONDURAS—E. B. Sweet Escott, C.M.G. (\$8,748).
 BRITISH GUIANA—Sir F. M. Hodgson, K.C.M.G. (£5,000).
 BAHAMA ISLANDS—W. Grey-Wilson, C.M.G. (£2,000).
 TRINIDAD AND TOBAGO—Sir Henry M. Jackson, K.C.M.G. (£5,000).
 BARBADOS—Sir Gilbert T. Carter, K.C.M.G. (£2,500).
 Windward Islands:—
 GRENADA—Sir R. B. Llewellyn, K.C.M.G. (£2,500).
 ST. VINCENT—E. J. Cameron, Esq. (£800).
 ST. LUCIA—Sir G. Melville, K.C.M.G. (£1,000).
 Leeward Islands:—
 ST. CHRISTOPHER NEVIS—C. T. Cox, C.M.G. (£900).
 ANTIGUA—Sir C. C. Knollys, K.C.M.G. (£2,800).
 DOMINICA—H.H.J. Bell, C.M.G. (£900).
 MONTserrat—F. H. Watkins (£400).
 VIRGIN ISLANDS—R. S. Earl, Esq. (£250).
 BERNUDA ISLANDS—Lieut.-Gen. Sir R. MacGregor Stewart, K.C.B. (£2,946).

MEDITERRANEAN.

GIBRALTAR—Field Marshal Sir George White, V.C., G.C.B., G.C.S.I., G.C.M.G., G.C.I.E., G.C.V.O. (£5,000).
 MALTA—Gen. Sir Mansfield Clarke, Bt., G.C.B., G.C.V.O. (£5,000).
 CYPRUS—Sir C. A. King Harman, K.C.M.G. (£3,000).

EASTERN.

CEYLON—Sir H. A. Blake, G.C.M.G. (Rs. 80,000).
 HONGKONG—Major Sir Matthew Nathan, R.E., K.C.M.G. (£5,000).
 MAURITIUS—Sir Cavendish Boyle, K.C.M.G. (£5,000).
 SEYCHELLES ISLANDS—W. E. Davidson, C.M.G. (Rs. 12,500).
 STRAITS SETTLEMENTS—Sir John Anderson, K.C.M.G. (£6,000).
 LABUAN—†
 WEI-HAI-WEI—J. H. S. Lockhart, C.M.G. (£1,150).

MISCELLANEOUS.

FALKLAND ISLANDS—W. L. Allardyce, C.M.G. (£1,200).
 JERSEY—Lieutenant-Governor—Major-Gen. H. R. Abadie, C.B. (£1,700).
 GUERNSEY—Major-Gen. B. B. D. Campbell, C.V.O., C.B. (£1,700).
 ISLE OF MAN—The Rt. Hon. Lord Raglan (£1,800).

THE CALENDARS.

The Jewish is in accordance with the system arranged A.D. 358. The Calendar dates from the Creation, which is fixed as 3760 years and 3 months before the beginning of the Christian Era; the year is Luni-solar.

The Mohammedan, or era of the Hejira, dates from the day after Mahomet's flight from Mecca, which occurred on the night of July 15, 622 A.D. The months are Lunar.

The Fasli year was derived from a combination of the Hejira and Samvat

THE CALENDARS—contd.

years by the order of Akbar; it is Luni-solar. The Bengali year seems also to have been related at one time to the Hejira, but the fact of its being Solar made it lose 11 days each year.

The Samvat era dates from 57 B.C., and is Luni-solar. The months are divided into two fortnights—*sudi* or bright and *badi* or dark. Each fortnight contains 15 tithis, which furnish the dates of the civil days given in our calendars.

JEWISH CALENDAR.

1905.	5665.
Jan. 7	Sebat 1
Feb. 6	Adar 1
" 19 Little Purim	" 14
Mar. 8	Veadar 1
" 20 Fast of Esther	" 13
" 21 Purim	" 14
" 22 Shushan Purim	" 15
April 6	Nisan 1
" 20 Fest. of Passover	" 15
" 21 " " 2nd Day	" 16
" 26 " " 7th "	" 21
" 27 " " 8th "	" 22
May 6	Yiar 1
" 23 Fest. 33rd of Omer	" 18
June 4	Sivan 1
" 9 Pentecost, 1st Day	" 6
" 10 " " 2nd "	" 7
July 4	Tamuz 1
" 20 Fast of Tamuz	" 17
Aug. 2	Ab 1
" 10 Fast of Ab	" 9
Sept. 1	Elul 1
" 30 New Year 5666	Tisri 1
Oct. 1 " " 2nd Day	" 2
" 2 Fast of Guedaliah	" 3
" 9 Day of Atonement	" 10
" 14 Feast of Tabernacles	" 15
" 15 " " 2nd Day	" 16
" 20 Hosana Raba	" 21
" 21 Feast of 8th Day	" 22
" 22 Rejoicing of the Law	" 23
" 30	Hesvan 1
Nov. 29	Kislev 1
Dec. 23 Dedication of Temple	" 25
" 29	Tebet 1

MOHAMMEDAN CALENDAR.

January 7 1905...1322	Dulkaada 1
February 6	Dulheggia 1
March 81323	Muharram 1
April 7	Saphar 1
May 6	Rabia I. 1
June 5	Rabia II. 1
July 4	Jomada I. 1
August 3	Jomada II. 1
September 1	Rajab 1
October 1	Shaaban 1
" 30	Ramadan 1
November 29	Shawall 1
December 28	Dulkaada 1

FASLI (N. W. INDIA).

January 1 1905 ... 1312	Pous 10
" 22	Magha 1
February 20	Phalguna 1
March 22	Chaitra 1
April 20	Vaisakha 1
May 19	Jyaistha 1
June 18	Ashada 1
July 17	Sravana 1
August 16	Bhadra 1
September 14 1313	Asvina 1
October 14	Karttika 1
November 13	Marga 1
December 12	Pous 1

BENGALI.

January 1 1905 ... 1311	Pous 17
" 14	Magha 1
February 13	Phalguna 1
March 14	Chaitra 1
April 14 1312	Vaisakha 1
May 15	Jyaistha 1
June 15	Ashada 1
July 17	Sravana 1
August 17	Bhadra 1
September 17	Asvina 1
October 18	Karttika 1
November 17	Marga 1
December 16	Pous 1

GENERAL INFORMATION, &c.

SAMVAT CALENDAR FOR 1905.

Day. 1905.	January 1901	February 1901	March 1901	April 1901-02	May 1902	June 1902	July 1902	August 1902	September 1902	October 1902	November 1902	December 1902
1	11 badi	12 badi	11 c badi	12 badi	13 badi	13 badi	14 badi	15 badi Srawana 1 sudi	2 sudi	3 sudi	5 sudi	5 sudi
2	12	13	12	13	13	14	15 Ashada 1 sudi	2	4	5	7	7
3	13	14	13 c	14	14	15 Jyaishta 1 sudi	2	4	5	6	8	8
4	14	15 Magha 1 sudi	13 B	15 Chaitra 1 sudi	15 Vaisakha 1 sudi	2	3	5	7	7	9	9
5	15 Faisla 1 sudi	2	14	2 c	2	3	4	6	8	8	10	10
6	2	3	15 Phalgun 1 sudi	2 c	2	3	4	7	9	9	11	11
7	3	4	2	3	3	4	5	8	10	10	12	12
8	4	5	3	4	4	5	6	9	11	11	13	13
9	5	6	4	5	5	6	7	10	12	12	14	14
10	6	7	5	6	6	7	8	11	13	13	15	15
11	7	8	6	7	7	8	9	12	14	14	16	16
12	8	9	7	8	8	9	10	13	15	15	17	17
13	9	10	8	9	9	10	11	14	16	16	18	18
14	10	11	9	10	10	11	12	15	17	17	19	19
15	11	12	10	11	11	12	13	16	18	18	20	20
16	12	13	11	12	12	13	14	17	19	19	21	21
17	13	14	12	13	13	14	15	18	20	20	22	22
18	14	15	13	14	14	15	16	19	21	21	23	23
19	15	16	14	15	15	16	17	20	22	22	24	24
20	16	17	15	16	16	17	18	21	23	23	25	25
21	17	18	16	17	17	18	19	22	24	24	26	26
22	18	19	17	18	18	19	20	23	25	25	27	27
23	19	20	18	19	19	20	21	24	26	26	28	28
24	20	21	19	20	20	21	22	25	27	27	29	29
25	21	22	20	21	21	22	23	26	28	28	30	30
26	22	23	21	22	22	23	24	27	29	29	31	31
27	23	24	22	23	23	24	25	28	30	30	1	1
28	24	25	23	24	24	25	26	29	31	31	2	2
29	25	26	24	25	25	26	27	30	1	1	3	3
30	26	27	25	26	26	27	28	31	2	2	4	4
31	27	28	26	27	27	28	29	1	3	3	5	5

This Calendar is for Lanka. The month name is inserted to 1 sudi, only, so that where necessary it may be written in for 1 badi. The Calendar figures are correct for Calcutta, Madras, and Bombay, except when followed by the initial letter of the place; a capital letter signifies that the tithi in the table is to be increased by 1, and a small letter that it is to be diminished by 1, to obtain the tithi at the place indicated by the letter.

TABLE OF EXCHANGE, No. 1—RUPEES INTO POUNDS STERLING.

For values of Rupees from 1s. 3½d. to 1s. 3¼d.

Rupees.	1s. 3½d.	1s. 3¼d.	1s. 3½d.	1s. 3¼d.	1s. 3½d.	1s. 3¼d.
1	£ s. d.	£ s. d.	£ s. d.	£ s. d.	£ s. d.	£ s. d.
1	0 1 3½	0 1 3¼	0 1 3½	0 1 3¼	0 1 3½	0 1 3¼
5	0 3 10½	0 3 10¼	0 3 10½	0 3 10¼	0 3 10½	0 3 10¼
10	0 6 5½	0 6 5¼	0 6 5½	0 6 5¼	0 6 5½	0 6 5¼
20	0 12 11½	0 12 11¼	0 12 11½	0 12 11¼	0 12 11½	0 12 11¼
30	1 5 10	1 5 9	1 5 10	1 5 9	1 5 10	1 5 9
40	1 18 9	1 18 8	1 18 9	1 18 8	1 18 9	1 18 8
50	2 11 8	2 11 7	2 11 8	2 11 7	2 11 8	2 11 7
60	3 4 7	3 4 6	3 4 7	3 4 6	3 4 7	3 4 6
70	3 17 6	3 17 5	3 17 6	3 17 5	3 17 6	3 17 5
80	4 10 5	4 10 4	4 10 5	4 10 4	4 10 5	4 10 4
90	5 3 4	5 3 3	5 3 4	5 3 3	5 3 4	5 3 3
100	5 16 3	5 16 2	5 16 3	5 16 2	5 16 3	5 16 2
200	10 12 2	10 12 1	10 12 2	10 12 1	10 12 2	10 12 1
300	16 2 11	16 2 10	16 2 11	16 2 10	16 2 11	16 2 10
400	22 16 8	22 16 7	22 16 8	22 16 7	22 16 8	22 16 7
500	28 10 5	28 10 4	28 10 5	28 10 4	28 10 5	28 10 4
750	42 8 2	42 8 1	42 8 2	42 8 1	42 8 2	42 8 1
1,000	64 11 8	64 11 7	64 11 8	64 11 7	64 11 8	64 11 7

For values of Rupees from 1s. 3¼d. to 1s. 4¼d.

Rupees.	1s. 3¼d.	1s. 3½d.	1s. 3¼d.	1s. 4¼d.	1s. 4½d.	1s. 4¼d.
1	£ s. d.	£ s. d.	£ s. d.	£ s. d.	£ s. d.	£ s. d.
1	0 1 3¼	0 1 3½	0 1 3¼	0 1 4	0 1 4	0 1 4
5	0 3 11	0 3 11½	0 3 11	0 4 0	0 4 0	0 4 0
10	0 6 7	0 6 7½	0 6 7	0 6 8	0 6 8	0 6 8
20	0 13 2	0 13 2½	0 13 2	0 13 4	0 13 4	0 13 4
30	1 6 5	1 6 5½	1 6 5	1 6 8	1 6 8	1 6 8
40	1 19 2	1 19 2½	1 19 2	1 19 4	1 19 4	1 19 4
50	2 12 1	2 12 1½	2 12 1	2 12 3	2 12 3	2 12 3
60	3 6 1	3 6 1½	3 6 1	3 6 3	3 6 3	3 6 3
70	3 19 4	3 19 4½	3 19 4	3 19 6	3 19 6	3 19 6
80	4 12 7	4 12 7½	4 12 7	4 12 9	4 12 9	4 12 9
90	5 5 10	5 5 10½	5 5 10	5 5 12	5 5 12	5 5 12
100	6 12 3	6 12 3½	6 12 3	6 12 5	6 12 5	6 12 5
200	12 12 2	12 12 2½	12 12 2	12 12 4	12 12 4	12 12 4
300	18 11 1	18 11 1½	18 11 1	18 11 3	18 11 3	18 11 3
400	24 5 3	24 5 3½	24 5 3	24 5 5	24 5 5	24 5 5
500	30 11 6	30 11 6½	30 11 6	30 11 8	30 11 8	30 11 8
750	44 12 2	44 12 2½	44 12 2	44 12 4	44 12 4	44 12 4
1,000	68 2 11	68 2 11½	68 2 11	68 2 13	68 2 13	68 2 13

For values of Rupees from 1s. 4¼d. to 1s. 4½d.

Rupees.	1s. 4¼d.	1s. 4½d.	1s. 4¼d.	1s. 4½d.	1s. 4¼d.	1s. 4½d.
1	£ s. d.	£ s. d.	£ s. d.	£ s. d.	£ s. d.	£ s. d.
1	0 1 4	0 1 4½	0 1 4	0 1 4	0 1 4	0 1 4½
5	0 6 8	0 6 8½	0 6 8	0 6 8	0 6 8	0 6 8½
10	0 13 2	0 13 2½	0 13 2	0 13 2	0 13 2	0 13 2½
20	1 0 9	1 0 9½	1 0 9	1 0 9	1 0 9	1 0 9½
30	1 17 3	1 17 3½	1 17 3	1 17 3	1 17 3	1 17 3½
40	2 10 6	2 10 6½	2 10 6	2 10 6	2 10 6	2 10 6½
50	3 7 9	3 7 9½	3 7 9	3 7 9	3 7 9	3 7 9½
60	4 4 12	4 4 12½	4 4 12	4 4 12	4 4 12	4 4 12½
70	5 1 15	5 1 15½	5 1 15	5 1 15	5 1 15	5 1 15½
80	6 8 18	6 8 18½	6 8 18	6 8 18	6 8 18	6 8 18½
90	7 5 21	7 5 21½	7 5 21	7 5 21	7 5 21	7 5 21½
100	8 2 24	8 2 24½	8 2 24	8 2 24	8 2 24	8 2 24½
200	16 15 11	16 15 11½	16 15 11	16 15 11	16 15 11	16 15 11½
300	24 9 4	24 9 4½	24 9 4	24 9 4	24 9 4	24 9 4½
400	32 3 7	32 3 7½	32 3 7	32 3 7	32 3 7	32 3 7½
500	39 10 0	39 10 0½	39 10 0	39 10 0	39 10 0	39 10 0½
750	58 15 10	58 15 10½	58 15 10	58 15 10	58 15 10	58 15 10½
1,000	87 1 18	87 1 18½	87 1 18	87 1 18	87 1 18	87 1 18½

TABLE OF EXCHANGE, No. 2—POUNDS STERLING INTO RUPEES.

For values of Rupees from 1s. 3½d. to 1s. 3¼d.

Sterling.	at 1s. 3½d.	at 1s. 3¼d.	at 1s. 3½d.	at 1s. 3¼d.	at 1s. 3½d.	at 1s. 3¼d.
£ s. d.	Rs. A. P.	Rs. A. P.	Rs. A. P.	Rs. A. P.	Rs. A. P.	Rs. A. P.
0 0 1	0 1 0	0 1 0	0 1 0	0 1 0	0 1 0	0 1 0
0 0 4	0 4 1	0 4 1	0 4 1	0 4 1	0 4 1	0 4 1
0 0 6	0 6 2	0 6 2	0 6 2	0 6 2	0 6 2	0 6 2
0 0 9	0 9 3	0 9 3	0 9 3	0 9 3	0 9 3	0 9 3
0 1 0	0 12 4	0 12 4	0 12 4	0 12 4	0 12 4	0 12 4
0 2 0	1 14 11	1 14 10	1 14 11	1 14 10	1 14 11	1 14 10
0 5 0	3 13 11	3 13 8	3 13 11	3 13 8	3 13 11	3 13 8
0 7 6	5 12 10	5 12 6	5 12 10	5 12 6	5 12 10	5 12 6
10 0 0	7 11 10	7 11 4	7 11 10	7 11 4	7 11 10	7 11 4
1 0 0	15 7 8	15 6 8	15 7 8	15 6 8	15 7 8	15 6 8
5 0 0	77 0 8	77 1 5	77 0 8	77 1 5	77 0 8	77 1 5
10 0 0	154 13 5	154 1 5	154 13 5	154 1 5	154 13 5	154 1 5
25 0 0	387 1 0	385 8 7	387 1 0	385 8 7	387 1 0	385 8 7
30 0 0	464 8 3	462 10 4	464 8 3	462 10 4	464 8 3	462 10 4
50 0 0	774 3 1	771 1 4	774 3 1	771 1 4	774 3 1	771 1 4
75 0 0	1,161 4 7	1,156 9 11	1,161 4 7	1,156 9 11	1,161 4 7	1,156 9 11
100 0 0	1,548 6 2	1,542 8 8	1,548 6 2	1,542 8 8	1,548 6 2	1,542 8 8

For values of Rupees from 1s. 3¼d. to 1s. 4¼d.

Sterling.	at 1s. 3¼d.	at 1s. 3½d.	at 1s. 3¼d.	at 1s. 4¼d.	at 1s. 4½d.	at 1s. 4¼d.
£ s. d.	Rs. A. P.	Rs. A. P.	Rs. A. P.	Rs. A. P.	Rs. A. P.	Rs. A. P.
0 0 1	0 1 0	0 1 0	0 1 0	0 1 0	0 1 0	0 1 0
0 0 4	0 4 0	0 4 0	0 4 0	0 4 0	0 4 0	0 4 0
0 0 6	0 6 0	0 6 0	0 6 0	0 6 0	0 6 0	0 6 0
0 0 9	0 9 0	0 9 0	0 9 0	0 9 0	0 9 0	0 9 0
0 1 0	0 12 1	0 12 0	0 12 1	0 12 0	0 12 1	0 12 0
0 2 6	1 14 2	1 14 1	1 14 2	1 14 1	1 14 2	1 14 1
0 5 0	3 12 5	3 12 2	3 12 5	3 12 2	3 12 5	3 12 2
0 7 6	5 10 7	5 10 3	5 10 7	5 10 3	5 10 7	5 10 3
10 0 0	7 8 11	7 8 5	7 8 11	7 8 5	7 8 11	7 8 5
1 0 0	15 1 10	15 0 11	15 1 10	15 0 11	15 1 10	15 0 11
5 0 0	75 9 5	75 4 8	75 9 5	75 4 8	75 9 5	75 4 8
10 0 0	151 2 10	150 9 4	151 2 10	150 9 4	151 2 10	150 9 4
25 0 0	377 15 2	376 7 5	377 15 2	376 7 5	377 15 2	376 7 5
30 0 0	453 8 8	451 12 2	453 8 8	451 12 2	453 8 8	451 12 2
50 0 0	755 14 5	752 15 6	755 14 5	752 15 6	755 14 5	752 15 6
75 0 0	1,133 13 8	1,129 6 0	1,133 13 8	1,129 6 0	1,133 13 8	1,129 6 0
100 0 0	1,511 12 11	1,505 14 1	1,511 12 11	1,505 14 1	1,511 12 11	1,505 14 1

For values of Rupees from 1s. 4½d. to

GENERAL INFORMATION, &c.

INDIAN STAMP DUTIES.

	Rs.	A.
Acknowledgment of Debt ex. Rs. 20	0	1
Affidavit or Declaration ...	1	0
Agreement or Memo. of Agreement, if relating to sale of a Government security, or share in an incorporated company or other body corporate, or Bill of Exchange	0	1
In any other case ...	0	8
Appointment in execution of a power ...	15	0
Articles of Association of Company	25	0
Articles of Clerkship ...	250	0
Award, any decision in writing by an Arbitrator, other than by an Order of the Court—Where the value does not exceed Rs. 1,000, same duty as a Bond.	5	0
In any other case ...	5	0
Bill of Exchange or Promissory Note payable on demand ...	0	1
Where payable otherwise than on demand, but not more than one year after date or sight—Not exc. Rs. 200, a. 2; exc. Rs. 200, not exc. Rs. 400, a. 4; exc. Rs. 400, not exc. Rs. 600, a. 6; exc. Rs. 600, not exc. Rs. 1,000, a. 10; exc. Rs. 1,000, not exc. Rs. 1,200, a. 12; exc. Rs. 1,200, not exc. Rs. 1,600, R. 1; exc. Rs. 1,600, not exc. Rs. 2,500, R. 1, a. 8; exc. Rs. 2,500, not exc. Rs. 5,000, Rs. 3; exc. Rs. 5,000, not exc. Rs. 7,500, Rs. 4, a. 8; exc. Rs. 7,500, not exc. Rs. 10,000, Rs. 6; exc. Rs. 10,000, not exc. Rs. 15,000, Rs. 9; exc. Rs. 15,000, not exc. Rs. 20,000, Rs. 12; exc. Rs. 20,000, not exc. Rs. 25,000, Rs. 15; exc. Rs. 25,000, not exc. Rs. 30,000, Rs. 18; and for every add. Rs. 10,000, or part thereof, in excess of Rs. 30,000, Rs. 6.		
Where payable at more than one year after date or sight, same duty as a Bond.		
Bill of Lading ...	0	4
Bond (not otherwise provided for)—Not exc. Rs. 10 ...	0	2
Exc. Rs. 10, but not exc. Rs. 50	0	4
Exc. Rs. 50, but not exc. Rs. 100	0	8
Up to Rs. 1,000, every Rs. 100	0	8
For every Rs. 500 or part, beyond Rs. 1,000 ...	2	8
Bond, Administration, Customs, Security or Mortgage Deed—For amount not exceeding Rs. 1,000, same duty as a Bond.		
In any other case ...	5	0
Cancellation ...	5	0
Certificate or other Document relating to Shares ...	0	1
Charter Party ...	1	0
Cheque ...	0	1
Composition—Deed ...	10	0
Conveyance, not being a Transfer—Not exceeding Rs. 50 ...	0	8
Exceeding Rs. 50, not exceeding Rs. 100 ...	1	0
For every Rs. 100 in excess of Rs. 100 up to Rs. 1,000 ...	1	0
Forevery Rs. 500, or part thereof, in excess of Rs. 1,000 ...	5	0
Copy or Extract—If the original was not chargeable with duty, or if duty with which it was chargeable does not exceed 1 Rupee	0	8
In any other case ...	1	0
Counterpart or Duplicate—If the duty with which the original instrument is chargeable does not exceed one rupee—The same duty as is payable on the original. In any other case ...	1	0
Delivery Order ...	0	1
Entry in any High Court of an Advocate or Vakil ...	500	0
In the case of an Attorney ...	250	0
Instrument—Apprenticeship ...	5	0
Divorce ...	1	0

INDIAN STAMP DUTIES—contd.

	Rs.	A.
Other than Will recording an adoption or conferring or purporting to confer Authority to adopt ...	10	0
Lease—Where rent is fixed and no premium is paid, for less than 1 year, same duty as Bond for whole amount; not more than 3 years, same as Bond for average annual rent reserved; over 3 years, same as Conveyance for consideration equal to amount or value of the average annual rent reserved; for indefinite term, same as Conveyance for amount equal to 10 years' rent; in perpetuity, same as Conveyance for consideration equal to one-fifth of rents paid in respect of first 50 years. Where there is premium and no rent, same as Conveyance for amount of premium; premium with rent, same as Conveyance for amount of premium, and same duty as Lease without premium.		
Letter—Allotment of shares ...	0	1
Credit ...	0	1
License ...	10	0
Memo. of Association of Company—If accompanied by Articles of Association ...	15	0
If not so accompanied ...	40	0
Notarial Act ...	1	0
Note or Memo. on Sale of Goods or Stock, exceeding Rs. 20 ...	0	1
Note of Protest by a Ship's master	0	8
Partnership—Where the capital does not exceed Rs. 500 ...	2	8
In any other case ...	10	0
Dissolution of ...	5	0
Policy of Insurance—(1) Sea—Where premium does not exceed rate of 2 a., or 1/2 per cent. of amount insured ...	0	1
In any other case for Rs. 1,000 or part thereof ...	0	2
(2) For time—For every Rs. 1,000 or part insured, not exc. 6 months ...	0	2
Exceeding 6 and not exceeding 12 months ...	0	4
(3) Fire—For 1 month or less, not exceeding Rs. 1,000 ...	0	2
Forevery further Rs. 1,000 or part More than 1 and not exc. 3 months, not exc. Rs. 1,000 ...	0	3
Forevery further Rs. 1,000 or part More than 3 months, not exceeding 6 months, per Rs. 1,000 ...	0	4
Exc. 6 months, per Rs. 1,000 ...	0	6
(4) Accident and Sickness—Against Railway accident, valid for a single journey only	0	1
In any other case—for the maximum amount which may become payable in the case of any single accident or sickness where such amount does not exc. Rs. 1,000, and also where amount exc. Rs. 1,000, for every Rs. 1,000 or part ...	0	2
(5) Life or any other Insurance, per Rs. 1,000 ...	0	6
In case of a re-insurance by one Company with another—1/3 of duty payable in respect of the original insurance, but not less than 1 anna, or more than 1 R.		
Power of Attorney—For the sole purpose of procuring the registration of one or more documents in relation to a single transaction or for admitting execution of one or more such documents ...	0	8
Authorising 1 person or more to act in a single transaction other than that mentioned above	1	0
Authorising not more than 5 persons to act jointly and severally in more than 1 transaction, or generally ...	5	0

INDIAN STAMP DUTIES—contd.

	Rs.	A.
Authorising more than 5 but not more than 10 persons to act	10	0
When given for consideration and authorising the Attorney to sell any immoveable property—The same duty as a Conveyance for the amount of the consideration.		
In any other case, for each person authorised ...	1	0
Protest of Bill or Note ...	1	0
Prayer ...	0	1
Receipt for value exc. Rs. 20 ...	0	1
Shipping Order ...	0	1
Surrender of Lease—When duty with which Lease is chargeable does not exceed Rs. 5—The duty with which such Lease is chargeable.		
In any other case ...	5	0
Transfer of Shares—One quarter of the duty payable on a Conveyance for a consideration equal to the value of the share.		
Transfer of any Interest secured by a Bond, Mortgage-deed, or Policy of Insurance—If duty on such does not exceed Rs. 5—The duty with which such Bond, &c., is chargeable.		
In any other case ...	5	0
Transfer of Lease by way of assignment and not by way of under-lease—The same duty as a conveyance for a consideration equal to the amount of the consideration for the transfer.		
Trust, Declaration of—Same duty as a Bond for a sum equal to the amount or value of the property concerned, but not exceeding ...	15	0
Revocation of—Ditto, but not exceeding ...	10	0
Warrant for Goods ...	0	4

FOREIGN MONEYS, AND THEIR ENGLISH EQUIVALENTS. FULL EXCHANGE VALUES.

	£	s.	d.
America—(United States) Eagle	2	1	1
Dollar of 100 Cents	0	4	2
Cent. (about)	0	0	0 1/2
Austria—Silver Crown	0	0	10
20 Hellers	0	0	2
Belgium—Gold Ten-Franc Piece	0	7	1 1/2
Silver Five Franc	0	3	1 1/2
One Franc	0	0	9 1/2
Denmark, Norway and Sweden—Krone	0	1	1 1/2
100 Ore = 1 Krone			
Egypt—Gold 100-Piastre Piece (Egyptian £)	1	0	3 1/2
One Piastre	0	0	2 1/2
France—Gold Twenty-Franc Piece	0	15	10 1/2
Silver Five-Franc Piece	0	3	1 1/2
Franc	0	0	9 1/2
Germany—(New Coinage)—Gold 20 Mark Piece	0	19	7
10 " " "	0	9	9 1/2
Silver 5 " " "	0	4	0 1/2
" 1 " " "	0	0	1 1/2
2 Thaler Pieces	0	5	1 1/2
Greece—Twenty Drachmai Gold Piece	0	15	10
One Drachmai (silver)	0	0	6 1/2
Holland—Ten Florins	0	16	8
Florin	0	1	8
India—Gold Mohur = 15 Rupees	1	9	2 1/2
Rupee (varying in value)	0	1	4
1/2 " " "	0	0	8
1/4 " " "	0	0	4
Since 1899 the Sovereign has been legal tender at the ratio of 15 rupees to the £ sterling (= 1/4 the rupee).			
Italy—Gold 20-Franc Piece	0	15	10 1/2
" 5 " " "	0	3	1 1/2
Franc	0	0	9 1/2
Japan—Gold 20 Yen Pieces	0	2	0 8
Silver 50 Sen Pieces	0	1	0 1/2
Value in exchange—1 Yen = 100 Sen = 2/30l.			
Portugal—Gold Milreis	0	4	4 1/2
Silver Half	0	2	2 1/2
100 Reis	0	0	5 1/2
Russia—Half Imperial	0	15	10 1/2
Silver Rouble	0	3	2
Ten-Copek Piece	0	0	3 1/2
Spain—(Gold)—Oro, 25 Pesetas	0	19	0 1/2
(Silver)—Plata, 5 Pesetas	0	3	1 1/2
" " "	0	1	7
" " "	0	0	9 1/2
The Peseta = 100 Centimos.			
Switzerland—Gold 20-Franc Piece	0	15	10 1/2
Silver 5-Franc Piece	0	3	1 1/2
Franc	0	0	9 1/2
Turkey—Gold Medjidie	0	18	0 1/2
Silver Medjidie	0	3	6 1/2
Piastre (40 Paras)	0	0	0 1/2

GENERAL INFORMATION, &c.

RATES OF POSTAGE, &c., IN HONGKONG AND AT BRITISH POSTAL AGENCIES IN CHINA.

To	Letters, per 1/2 oz.	Single Post Cards, each.	Reply Post Cards, each.	Books, Commercial Papers, Newspapers, Patterns, &c., per 2 ozs.	Registration.
UNION COUNTRIES (except as below)	10	4	8	2††	10
The rate for letters posted in Hongkong and at the several British Postal Agencies in China for the United Kingdom, India, Ceylon, Aden, and British Possessions and Protectorates (for list see page 6), which have adopted the Imperial Penny Postage, is 4 cents per 1/2 oz.	4	4	8	2††	10
Hongkong and British Post Offices at Shanghai, Ningpo, Hankow, Liu Kung Tau, Swatow, Amoy, Foochow, Hoihow, Canton and Chefoo (between Hongkong and Canton the rate for letters is 2 cents per 1/2 oz.)	4**	1	2	2††	10
Macao (from Hongkong and Canton)	2**	1	2	2††	10
Macao (from all other British Post Offices in China)	5**				
NON-UNION COUNTRIES—					
Abyssinia	10	4	8	2	none
Afghanistan	10	4	8	2	10
Arabia	10	4	8	2	10
China	4	1	2	2††	10
Foreign (non-British) establishments	10	4	8	2	10
Friendly Islands (Tonga Islands)	10	4	8	2	10
Morocco (with a few exceptions)	10	4	8	2	10
Navigators' Island (Samoa)	10	4	8	2	none
Solomon Island, Rhodesia (N.E. & N.W.), including Northern Zambesia	10	4	8	2	10
Other parts	10	4	8	2	10
LOCAL DELIVERY	2	1	2	2††	10

* For Commercial Papers, lowest charge is 10 cents. For Patterns, lowest charge is 4 cents. † Prepayment is compulsory. †† An additional charge is made on delivery. ‡ Registration in China through British Offices extends to Hoihow, Canton, Swatow, Amoy, Foochow, Ningpo, Shanghai, Hankow, Liu Kung Tau and Chefoo only. ‡ Registration is incomplete, not extending beyond port of arrival. ‡ Single Newspapers, 2 cents per 4 ozs., or fraction, to Australia, China, Ceylon, Corea, Formosa, India, Japan, Macao, Netherlands India, New Zealand, Philippines, Siam, Straits Settlements, Timor. ** For Chinese Postal Packets, the rate to and from Canton and to Macao is 4 cents per 1/2 oz.

NOTE.—Limit of weight of Book Packets is:—To British Offices 5 lbs., foreign countries in the Postal Union, 4 lbs. Patterns, British Offices, 5 lbs., to foreign countries in the Postal Union, 12 ozs.

Parcel Post.—Hongkong and China, not exceeding 3 lbs., 25 cents; 7 lbs., 50 cents; 11 lbs., 75 cents. To Japan, Formosa and Corea, each lb. to 5 lbs., 20 cents. To United Kingdom, not over 3 lbs., 50 cents; over 3 lbs., but not over 7 lbs., \$1.00; over 7 lbs., but not over 11 lbs., \$1.50. Other countries, various rates.

Money Orders are issued at Hongkong and Shanghai. Local Money Orders: The commission to be charged on the issue of Money Orders payable in Hongkong and the Agencies in China will be one cent per dollar or fraction of a dollar, with a minimum charge of 5 cents. Foreign Money Orders: The commission to be charged will be one and a half cent per dollar on the amount (or equivalent of the amount), in dollars, with a minimum charge of 10 cents. No Order (except in the case of those drawn on India, for which the limit is 150 rupees, and those on Japan, Borneo, Siam and Straits Settlements, for which the limit is \$100) must exceed £10 or \$50, Gold. Orders on the Countries drawn through the London Post Office are paid less the following discount, for which the remitter should allow. All such Orders must be expressed in British currency:—For sums not exceeding £2, -/3; exceeding £2 but not exceeding £6, -/6; exceeding £6 but not exceeding £10, -/9.

INDIAN MONEY TABLE.

3 Pie	make 1 Pice
12 Pie or 4 Pice	" 1 Anna
192 Pie, or 64 Pice, or 16 Annas	" 1 Rupee
16 Rupees (Silver)	" 1 Mohur (Gold)
100,000 "	" 1 Lakh or Lac

INDIAN WEIGHTS.

1 Tola	= 61 2/3 drachms avoirdupois
5 Tolas	" 2 2/3 ounces
16 Chittacks	" 2 2/3 pounds
40 Seers	" 8 2/3 pounds
27.222 (nearly 27 1/2) Maunds	" 1 ton

Linal measures vary throughout India; in Bengal 3 1/2 Beegahs go to an acre.

QUARTER DAYS.

English.	Mar.	25	Scottish.	Feb.	2
Lady Day	Candlemas
Midsummer	Whitsunday
Michaelmas	Lammass
Christmas	Martinmas

CEYLON POSTAL RATES.

Inland Rates.—Letters per oz., 5 cents. District Letters, 2 cents per oz. Post Cards, 2 cents; reply, 4 cents. Letter Cards, 5 cents; reply, 10 cents. Printed Matter, not exc. 5 ozs., 2 cents; exc. 5 ozs., not exc. 10 ozs., 5 cents; exc. 10 ozs., not exc. 1 lb., 10 cents; every add. lb. or fraction, 10 cents. Parcels, not exc. 4 ozs., 5 cents; not exc. 8 ozs., 10 cents; not exc. 1 lb., 15 cents; every add. lb. or fraction, 15 cents.

Rates to India.—Letters per 1/2 oz., 5 cents. Post Cards, 2 cents; reply, 4 cents. Printed Matter, &c., 1st 4 ozs., 2 cents; every add. 2 ozs., 2 cents. Patterns and Samples, 4 ozs., 5 cents; each add. 2 ozs., 3 cents. Parcels, not exc. 1/2 lb., 20 cents; 1 lb., 25 cents; each add. lb., up to 11 lbs., 15 cents; 11 lbs. to 12 lbs., 3 Rs. 25 cents; each add. lb. to 50 lbs., 25 cents.

Foreign Rates.—Letters to the United Kingdom, Aden and the British Colonies, &c., which have adopted the Imperial Penny postage (for list see Indian Foreign Postage Rates, page 6), each 1/2 oz., 6 cents. All other countries each 1/2 oz., 15 cents. Post Cards, 6 cents; reply, 12 cents. Printed Papers, per 2 ozs., 3 cents; every add. 2 ozs., 2 cents. Commercial Papers, per 10 ozs., 15 cents; every add. 2 ozs., 3 cents. Patterns and Samples, per 4 ozs., 5 cents; every add. 2 ozs., 3 cents.

Registration.—Inland or Foreign, 10 cents. Telegraph Rates, Inland.—"Urgent" Telegrams, 75 cents, "Ordinary," 25 cents per first 8 words or groups of 3 figures, every add. word or group of 3 figures, 10 cents and 5 cents respectively, address free.

Parcel Post to United Kingdom.—Charge is first 3 lbs., 75 cents; above 3 lbs. and up to 7 lbs., 1 R. 50 cents; above 7 lbs. and up to 11 lbs., 2 Rs. 25 cents. Limit, 3 ft. 6 ins. in length; length and girth together, 6 ft. Parcels may be despatched by the quicker route, via Italy and France, on payment of an extra fee of 75 cents per parcel. Parcels containing valuables must be insured for at least half of their value.

Money Order Rates:—

Inland. Re. c.	India. Re. c.	United Kingdom. Re. c.
up to Rs. 10 ... 0 10	up to Rs. 10 ... 0 12	up to £2 ... 0 25 ... 0 37
Between	Between	Between
Rs. 10 & 20 ... 0 20	Rs. 10 & 25 ... 0 25	£2 & £5 ... 0 50 ... 0 75
" 20 & 30 ... 0 30	" 25 & 50 ... 0 50	£5 & £7 ... 0 75 ... 1 12
" 30 & 40 ... 0 40	" 50 & 75 ... 0 75	£7 & £10 ... 1 0 ... 1 50
" 40 & 50 ... 0 50	" 75 & 100 ... 1 0	
" 50 & 80 ... 0 80	" 100 & 125 ... 1 25	
" 80 & 100 ... 1 0	" 125 & 150 ... 1 50	

SUN RISES AND SETS AT BOMBAY, 1905.

With corrections to deduce the same for Calcutta and Madras.

1905.	Rises.	Sets.	Corr.	1905.	Rises.	Sets.	Corr.	1905.	Rises.	Sets.	Corr.
Jan. 5	6 39	5 35	+9	May 4	5 32	6 22	-7	Sept. 7	5 48	6 9	-3
12	6 37	5 39	+9	11	5 29	6 24	-8	14	5 49	6 3	-2
19	6 39	5 43	+8	18	5 26	6 25	-8	21	5 50	6 58	-1
26	6 38	5 47	+7	25	5 24	6 28	-9	28	5 51	7 50	0
Feb. 2	6 35	5 51	+6	June 1	5 23	6 31	-9	Oct. 5	5 53	8 44	+1
9	6 32	5 55	+5	8	5 23	6 34	-9	12	5 55	9 39	+2
16	6 29	5 59	+4	15	5 24	6 36	-10	19	5 57	10 34	+3
23	6 25	6 3	+3	22	5 25	6 38	-10	26	5 59	11 30	+4
Mar. 2	6 20	6 5	+2	29	5 27	6 39	-10	Nov. 2	6 2	12 27	+5
9	6 15	6 7	+1	July 6	5 29	6 39	-10	9	6 6	13 24	+6
16	6 9	6 9	0	13	5 32	6 39	-10	16	6 10	14 22	+7
23	6 3	6 11	-1	20	5 34	6 38	-9	27	6 14	15 20	+8
30	5 57	6 13	-2	27	5 36	6 36	-9	30	6 19	16 20	+9
Apr. 6	5 51	6 14	-3	Aug. 3	5 38	6 33	-8	Dec. 7	6 23	17 19	+9
13	5 46	6 16	-4	10	5 40	6 29	-7	14	6 27	18 23	+10
20	5 41	6 18	-5	17	5 42	6 25	-6	21	6 31	19 26	+10
27	5 36	6 20	-6	24	5 44	6 20	-5	28	6 34	20 30	+10
				31	5 46	6 15	-4				

SUNRISE Calcutta, Add + corr. to or subtract - corr. from Bombay. Madras, Subtract + corr. from or add - corr. to " SUNSET Calcutta, Subtract + corr. from or add - corr. to " Madras, Add + corr. to or subtract - corr. from "

ALMANAC FOR 1906.

PRINCIPAL ARTICLES OF THE CALENDAR.
Golden Number ... 7 | Solar Cycle ... 11 | Roman Indiction ... 4
Epaet ... 5 | Dominical Letter ... G | Julian Period ... 6619
The Year 5667 of the Jewish Era commences on September 20.
The Year 1324 of the Mohammedan Era commences on February 25.
Ramadân (Month of Abstinence observed by the Turks) commences on Oct. 29.

Jan.	Feb.	Mar.	Apr.	May	June	July	Aug.	Sept.	Oct.	Nov.	Dec.
1	1	1	1	1	1	1	1	1	1	1	1
2	2	2	2	2	2	2	2	2	2	2	2
3	3	3	3	3	3	3	3	3	3	3	3
4	4	4	4	4	4	4	4	4	4	4	4
5	5	5	5	5	5	5	5	5	5	5	5
6	6	6	6	6	6	6	6	6	6	6	6
7	7	7	7	7	7	7	7	7	7	7	7
8	8	8	8	8	8	8	8	8	8	8	8
9	9	9	9	9	9	9	9	9	9	9	9
10	10	10	10	10	10	10	10	10	10	10	10
11	11	11	11	11	11	11	11	11	11	11	11
12	12	12	12	12	12	12	12	12	12	12	12
13	13	13	13	13	13	13	13	13	13	13	13
14	14	14	14	14	14	14	14	14	14	14	14
15	15	15	15	15	15	15	15	15	15	15	15
16	16	16	16	16	16	16	16	16	16	16	16
17	17	17	17	17	17	17	17	17	17	17	17
18	18	18	18	18	18	18	18	18	18	18	18
19	19	19	19	19	19	19	19	19	19	19	19
20	20	20	20	20	20	20	20	20	20	20	20
21	21	21	21	21	21	21	21	21	21	21	21
22	22	22	22	22	22	22	22	22	22	22	22
23	23	23	23	23	23	23	23	23	23	23	23
24	24	24	24	24	24	24	24	24	24	24	24
25	25	25	25	25	25	25	25	25	25	25	25
26	26	26	26	26	26	26	26	26	26	26	26
27	27	27	27	27	27	27	27	27	27	27	27
28	28	28	28	28	28	28	28	28	28	28	28
29	29	29	29	29	29	29	29	29	29	29	29
30	30	30	30	30	30	30	30	30	30	30	30
31	31	31	31	31	31	31	31	31	31	31	31

Septuagesima S. Feb. 11 | Easter Day .. April 15 | Whit Sunday .. June 3
Good Friday .. April 13 | Ascension Day .. May 24 | 1st S. in Advent .. Dec. 2

CONCISE DIRECTORY.

We have inserted this short Directory for the use of our Subscribers under the impression that it will prove of utility to country and foreign residents who may desire to communicate with a firm in any particular Trade or Profession, and have no means at hand of knowing whom to address.

ACTS OF PARLIAMENT, PARLIAMENTARY PAPERS, GOVERNMENT PUBLICATIONS—

(Sole Agents in England and Wales)

Eyre & Spottiswoode, East Harding-st., E.C.

ADDRESS PLATES—

Ivory, Ivorine, Bone, Brass, Copper, German Silver. Endolithic Manufacturing Co., Ltd., 61½, Fore-street, London, E.C.

AERATED PASTRY FLOUR—

Coombs' Eureka Aerated Flour Co., Ltd., Lenton Boulevard, Nottingham, and 8 & 8A, Farringdon-road, London, E.C.

An admitted Antidote for Indigestion. 20 Gold Medals.

AGRICULTURAL IMPLEMENT MAKERS—

Bentall, E. H., & Co., Heybridge, Maldon, Essex. Makers of all kinds of Cattle-foot Preparing Machines, also Mowers.

ALKALI MANUFACTURERS—

The United Alkali Co., Limited, 30, James-street, Liverpool.

Ammonia Alkali, Bleaching Powder, Soda Crystals, Caustic Soda, Bicarb: Soda, &c.

ALUM MANUFACTURERS—

Australian Alum Co., Runcorn, Cheshire.

Clear Crystal Alum. Pure Potash Alum. Special Alum for Papermaking.

AMMUNITION—

The King's Norton Metal Co., Ltd., King's Norton, nr. Birmingham, England. Managing Directors, T. R. and T. A. Bayliss. Tele. add.: "Metal, King's Norton."

Mfrs. of all kinds of Military Ammunition for Small Arms and Quick-firing Guns. Rolled Brass, Copper, Nickel, &c., &c. Brass and Copper Rivets and other Specialities.

ARTESIAN WELLS—

Le Grand & Sutcliff, 125, Bunhill-row, London, E.C.

Registered Trade Mark, "Abyssinian."

ASBESTOS—

The United Asbestos Co., Limited, Dock House, Billiter-street, London, E.C.

Asbestos Goods, Engineers' Stores, Lubricating Oils, Creams and Greases, Boiler and Pipe Covering Composition. Tele. address: "Asbestos," London.

BACON AND HAM CURERS AND EXPORTERS—

Chas. & Thos. Harris & Co., Limited, Calne, Wiltshire, England.

Genuine Wiltshire Bacon and Hams. Gold Medals Paris, 1889 and 1900.

BALATA AND COTTON BELTING—

Arthur Cort & Co., 277, Camberwell New-road, London, S.E.

Tele. add.: "Cort, Camberwell, London."

BENT CRANKS AND FORGINGS—

Woodhouse & Rixson, Sheffield. Bent Cranks, Round and Square Section, Forged or Finished. All kinds of Steel Forgings.

BIBLES AND PRAYER BOOKS—

Henry Frowde, Oxford University Press Warehouse, Amen Corner, London, E.C.

(Of all booksellers throughout the World.)

BILLIARD AND BAGATTELLE TABLE MAKER—

George Edwards, 134, Kingsland-road, London, N.E. All Tables have the low and fast Cushions, not affected by any climate. Also large stock of Second-hand Tables.

BILLIARD BALLS (Composition)—

"Crystalate," guaranteed. Made in England. Endolithic Manufacturing Co., Ltd., 61½, Fore-street, London, E.C.

BIRD SEEDS—

R. Hyde & Co., Camberwell, London. Aesthetic Bird Seeds, Parrot Food, Shell Gravel, &c., in packets. Sold everywhere.

BLOTTING PAPER MANUFACTURERS—

T. B. Ford (Ltd.), Snakeley Mill, Loudwater, Bucks. Samples and Prices on application. Each sheet water-marked "Ford, 428 Mill."

BOILER COVERING—

Magnesia Coverings, Ltd., Washington, Co. Durham, England. Sole Makers of Magnesia Sectional and Plastic Coverings. Telegraphic Address: "Chemical," Washington Station.

BOLT & NUT, SCREW & RIVET MAKERS—

Herbert W. Periam, Limited, Floodgate-street Works, Birmingham. Also maker of Washers and Roofing Nails.

BOOTS AND SHOES—

J. & E. Reynolds, Chesham, Bucks. Manufacturers of all classes of Boots and Shoes for South Africa and General Export and Home Trade.

BUILDINGS, PORTABLE, WOOD AND IRON, &c., &c.—

Boulton & Paul, Limited, Manufacturers, Rose Lane Works, Norwich.

BUNTING MANUFACTURERS—

E. Riley & Co., Providence Street Mills, Leeds.

BUTTER—

Harmens & Zoon, Harlingen, Holland. Packers of guaranteed pure Butter.

CABLES FOR TRANSMISSION OF ELECTRIC POWER—

Callender's Cable and Construction Co., Hamilton House, Victoria Embankment, London.

CARBONIC PAPER AND SUPPLIES—

Lamson Paragon Supply Co., Ltd., 4, Queen-street, Cheapside, E.C.

Telegraphic Address: "Plaudit."

CARBOYS, &c.—

E. Breffit & Co., Ltd., The Aire and Calder Glass Bottle Co.'s Works, Castleford, Yorks.

Telegrams, Brevit, Castleford.

CARRIAGE & MOTOR CAR MANUFACTURERS—

Henry Whitlock, Limited, Holland Gate, Kensington, & Turnham Green, London, W.

COLOURED PAPERS—

Thomas & Green, Limited, Soho Mills, Woodburn, Bucks, and 196, Upper Thames-st., London, E.C. Tele. Add.: "Thomas, Woodburn," and "Rainbow, London."

CONFECTIONERS—

M. A. Craven & Son, Ebor Confectionery Works, York.

COPYING APPARATUS MANUFACTURERS—

The Copying Apparatus Co., Limited, 123, Cannon-street, London, E.C.

The Simplex Hektograph, The Neo-Cyclostyle, The A.B.C. Copier, The Automatic Cyclostyle, The Edison Mimeograph, The Duplicator, &c. Write for circulars.

COTTON BAGS—

From 1 to 140 lbs. in white and unbleached Calico. T. & W. Judge. Original and Largest Manufacturers and Printers, Cumberland Works & Manchester Works, Kennington, London. Tele. Add.: "Cotton Bag," London.

COTTON GOODS—

Kenyon, James, & Son, Roach Bank Mills, Bury, Lancashire. Manufacturers of Longcloths, Shirtings, Sheetings, Flannelettes, &c. Trade Mark, Three Acrobats. Tele. Add.: "Camellia, Bury."

CRANES AND LIFTING MACHINERY—

Thomas Smith & Sons, Steam and Electric Crane Works, Old Foundry, Rodley, near Leeds.

Telegraphic Address: "Smith, Rodley." London Office, 9, Victoria-st., Westminster, S.W. Tele. Address: "Accrocher, London."

DAYLIGHT LIGHTING ENGINEERS—

The British Luxfer Prism Synd., Ltd., 16, Hill-street, Finsbury, London.

Luxfer Window Prisms, Pavement Lights, Floor Lights, etc., etc.

DISINFECTORS (STEAM)—

Manlove, Alliott & Co., Ltd., Engineers, Nottingham; also Laundry Machinery & Hydro-Extractors.

DISINTEGRATORS (Carter's)—

Sole Manufacturer: J. Harrison Carter. Works: Dunstable. London Office: 82, Mark Lane, E.C. Teleg. Add.: Milling, Dunstable.

DOG BISCUITS—

Walker, Harrison & Garthwaites, Ltd., Phoenix Biscuit Works, Ratcliff Cross, London, E.

ELECTRICAL ENGINEERS & CONTRACTORS—

Crompton & Co., Limd, Salisbury House, London Wall, London, E.C. Works: Chelmsford, England. Manufacturers & Contractors for complete Electrical Equipment.

ELECTRIC LIGHT PILLARS, BRACKETS, CARRIERS, &c.—

Walter Macfarlane & Co., Architectural, Sanitary and General Iron Founders, Saracen Foundry, Glasgow.

ELEGTRIC WIRING CONDUIT MANUFERS.—

The Simplex Steel Conduit Co., Ltd., Westinghouse Building, Strand, London, W.C. Steel Conduits and Fittings for Electric Light and Power Wiring. Highest Efficiency. Lowest Costs. Lists on application.

EMBROCATION FOR ANIMALS AND FOR HUMAN USE—

Elliman, Sons & Co., Slough, England. The Elliman First Aid Book—Animals' Treatment. The Elliman R. E. P. Book—Human Treatment.

EMERY WHEEL MAKERS—

Luke and Spencer, Limited, Broadheath, Manchester. Also Manufacturers of Grinding and Polishing Machinery. Catalogue on application.

ENAMELLED LETTERS AND TABLETS—

Garnier & Co., Inventors and Actual Makers, 86, Farringdon-street, London, E.C., and Ludgate Enamelling Works, Willesden.

ENGINES—STEAM, GAS AND OIL—

Robey & Co., Limited, Globe Works, Lincoln, England.

ENGLISH PRESERVED PROVISIONS—

Harry Peck & Co., Snow Hill, London. Table Delicacies and Fancy Cheeses, packed in Tins and Glasses, for Export; fine fancy Groceries. Sole Manufacturers of the celebrated "Archer" Brand Potted Meats and Fish, Galantines, Tongues, Patés, Soups, Sausages, and Preserved Provisions.

FANCY GOODS AND TOYS—

Purses, Bags, and such like. Faudels, Newgate-street, London.

FELT MANUFACTURERS—

F. McNeill & Co., Lamb's-passage, Bunhill-row, London, E.C. Tele. Add.: "Eyeball." Est. 1833.

Government Contractors, Roofing, Sarking, Inodorous, Sheathing and Hair Felts.

FIREWOOD SPLITTING & BUNDLING, "IDEAL" Saw Guards, Benches, Sharpening and Fire Lighter Machinery—

M. Glover & Co. Write us. "Make Money." Patentees and Sole Makers, Leeds.

FLAGS—

E. Riley & Co., Providence-street Mills, Leeds.

FLOUR MILLERS—

W. Vernon & Sons, Liverpool and Birkenhead. Manufacturers of Millennium Flour. 70 Gold Medals.

FOODS FOR INFANTS, INVALIDS, AND THE AGED—

J. R. Neave & Co., Fordingbridge, Hants. Manufacturers of "Neave's Food." Gold Medal awarded, Woman's Exhibition, London, 1900.

FUSE FOR BLASTING—

The Bennett Fuse. "Crown Brand." William Bennett, Sons & Co., Camborne, Cornwall, England.

GAME & POULTRY FOODS—

Walker, Harrison & Garthwaites, Ltd., Phoenix Biscuit Works, Ratcliff Cross, London, E.

GAS METER MANUFACTURERS—

Thomas Glover & Co., Ltd., 49, Queen Victoria-street, London, E.C.

New Improved Prepayment Meters for Pennies, Shillings, or any coin.

GAUGE GLASS MANUFACTURERS—

Tomey & Sons, Tay Glass Works, Perth. Sole Makers of the "Eureka" Gauge Glass.

GLASS BOTTLE MANUFACTURERS—

Cannington, Shaw & Co., Limited, St. Helens, Lancashire, England. Manufacturers of Glass Bottles, Codd's Ebonite Screw and Crown Cork Mouth Confectioners' Bottles, Boxes and Cases.

GLAZING FOR ROOFS—

Mellows & Co., Ltd., Works, Sheffield. And at 28, Victoria-street, London. Patent "Eclipse" Glazing. No Putty, Paint, Asbestos nor maintenance required. 20 years' Test. Millions of feet Glazed.

GLYCERINE—

Joseph Crossfield & Sons, Ltd., Warrington, England. Chemically Pure, Industrial, Dynamite and Crude.

GRAB DREDGING & EXCAVATING MACHINERY (The Kingston Patent)—

Rose, Downs & Thompson, Limited, Old Foundry, Hull; and 12, Mark-lane, London, E.C.

GREENHOUSES, CONSERVATORIES, &c., &c.—

Boulton & Paul, Limited, Manufacturers, Rose-lane Works, Norwich.

GUN AND RIFLE MAKER—

Charles Lancaster. Established in 1826, at 151, Bond-street, London. To His Majesty the King, H.L.M. the German Emperor, &c., &c.

Removed to 11, Pantion-street, Haymarket, London, S.W. Telephone No. 3691, Gerrard. Telegrams, "Oval Bore, London."

HYDRAULIC MACHINERY, PRESSES, PUMPS, ACCUMULATORS, RIVETTERS, VALVES, &c.—

Henry Berry & Co., Ltd., Leeds.

LAUNCH BUILDERS—

The Thames Valley Launch Co., Ltd., Chief Offices & Works, Weybridge, Surrey. Designers and Builders of all kinds of Launches for Home or Abroad. Estimates Free. W. Rowland Edwards, A.M.I.E.E., Managing Director.

CONCISE DIRECTORY—continued.

LEAD GLAZING—Grover & Co., Ltd., Wharf-road, London, N. Simplex Lead Glazing. No special Contract required. Millions of feet in use. Any quantity supplied.

LEATHER GOODS MANUFACTURERS—John Pound & Co., 81-84, Leadenhall-street; 67, Piccadilly; 211, Regent-street; 378, Strand; and 177-8, Tottenham Court-road, London.

The largest manufacturers of their kind.

LENSES FOR SHIP AND RAILWAY LAMPS—Jas. Stevens & Son, Victoria Glass Works, Birmingham.

Lenses, Port-hole glasses, bent glasses, bevelled glasses, and glass of every description used in Steamers or Railways.

LIFTS—Archibald Smith & Stevens, Janus Works, Queens-road, Battersea, Branches at Manchester, Liverpool, Birmingham, Glasgow and Dublin.

LIGHTNING CONDUCTORS and everything in connection with them; supplied and fixed by J. Lewis, 5 and 6, Great Winchester-st., London, E.C. Admiralty Contractor. Telephone 3,053, Central.

LUBRICATING OILS—W. H. Willcox & Co., Ltd., 23, Southwark-street, London, S.E. Oil Refiners. General Lubricating and Cylinder Oils.

MALTED FOOD for Infants and Invalids—Coombs' Eureka Aerated Flour Co., Ltd., Lenton Boulevard, Nottingham, and 8 & 8A, Farringdon-road, London, E.C. Also Makers of Custard, Blanc Mange, Egg and Baking Powders, Fruit Saline, Health Salt, Gravy Salt, Lady's Cake Flour and Still Lemonade Powder.

MANTLE MANUFACTURERS (to the Trade and Shippers only)—Corby, Palmer and Stewart, 39, 40, 41, St. Paul's Churchyard, London, E.C.

Ladies' and Children's Mantles, Jackets, Capes, Blouses, Mackintoshes, Imperial Cloaks, Fur Capes, Skirts and Costumes.

MAPS: PUBLISHER, MAPSELLER AND GEOGRAPHICAL BOOKSELLER—Edward Stanford, 12, 13 and 14, Long Acre, London, W.C. (Branch Office: 26 and 27, Cockspur-street, S.W.) Catalogues Free.

METALS AND ALLOYS—The Phosphor Bronze Co., Ltd., Southwark, London, S.E.

Ingot, Castings, Bars, Wire, Sheet, &c., as supplied to British and Foreign Governments, Railways, Engineers, &c., throughout the World.

MINING, QUARRYING & AGRICULTURAL TOOLS.

The Hardy Patent Pick Co., Ltd., Sheffield.

MOTOR LAMPS AND FITTING MANUFRS.—Worsnop & Co., Ltd., The Carlton Lamp Works, Halifax, England.

Cable Code, A.B.C., 5th Edition.

MOTOR TRACTION—The Lomax Motor Tractor Co., 7, Arundel-street, Strand, London, England. On the War Office List.

MUSIC PUBLISHERS—Edwin Ashdown, Limited, Hanover-square, London, W.; New York and Toronto.

NEEDLE, FISH-HOOK AND FISHING TACKLE MANUFACTURERS—Henry Milward & Sons, Limited, Washford Mills, Redditch.

Sole Makers of the "Calyx-eyed" easy threading and "Best Best" Needles. Makers of the very best Fishing Tackle.

OAKUM MANUFACTURERS—Anglo-American Rope and Oakum Co., Liverpool. All kinds Machine Spun and Unspun Oakum. Awarded 15 Medals and Diplomas. Established 1868.

OFFICE FITTERS AND FURNITURE MFRS.—Rankin & Co., Successors to Newson & Co., Finsbury House, Finsbury-square; and 2, 4 & 6, Worship-street, London, E.C. Manufacturers of all kinds of Office Furniture and Fittings. Largest Stock in London.

OIL SEED CRUSHING, REFINING AND FILTERING MACHINERY—Rose, Downs & Thompson, Limited, Old Foundry, Hull; and 12, Mark-lane, London, E.C.

OPTICIANS—Ross, Ltd., Manufacturers, 111, New Bond-street, London, W. Microscopes, Telescopes, Field Glasses, Photographic Lenses, &c., &c. Tele. Address: "Rossano, London."

PAPER MAKERS—Alex. Pirie & Sons, Limited, Stoneywood Works, Aberdeenshire, and 97, Farringdon-street, London, E.C. Tele. Address: "Pirie, Aberdeen."

PATENT AGENTS—Jensen & Son, 77, Chancery-lane, London, W.C. Patents, Designs and Trade Marks secured all over the World.

PHOTOGRAPHIC SHUTTERS—The Thornton-Pickard Manufacturing Co., Limited, Altrincham.

Original Inventors and Largest Makers of Shutters for every class of work.

PIANOFORTES—John Brinsmead & Sons, Ltd., 18, 20 and 22, Wigmore-street, London, W. By Special Appointment to their Majesties the King and Queen.

Telegrams "Brinsmead," London.

PICKS—The Hardy Patent Pick Co., Ltd., Sheffield.

PINS, HAIR PINS, SAFETY PINS—D. F. Taylor & Co., Ltd., Birmingham.

The Original Inventors of the Solid Headed Pins. London Office, 10, Manchester-avenue, E.C.

PLASTERS (MEDICAL) AND SURGICAL BANDAGES—A. de St. Dalmas & Co., Leicester. Spread Plasters, Adhesive, Soap, Belladonna, etc. Porous Rubber Plasters, Mustard Leaves, Corn and Court Plasters. All kinds of Surgical Bandages. Adhesive Plaster specially prepared and packed for export.

PLATINUM REFINERS AND DEALERS—Johnson, Matthey & Co., Ltd., 74-81, Hatton Garden, London, E.C.

Platinum Apparatus—Sheet, Foil, Wire, Crucibles, &c. Gold and Silver Refiners. Standard Silver, Circles, Sheet, Wire, &c.

POLISHING POWDER—J.F. Baumgartner & Co., (C. D.) 74, Newman-street, London, W. "La Brillantine" Metallic Powder. The best and cheapest Polishing Powder for Metals and Glass (especially Brass).

POSTAGE STAMP MERCHANTS AND PHILATELIC PUBLISHERS—Whitfield King & Co., Ipswich.

Foreign and Colonial Postage Stamps for Collectors. Publishers of the Universal Standard Catalogue of the Postage Stamps of the World. Price 1/6, post free.

PRINTERS' ROLLERS AND COMPOSITION—"The Durable" Printers' Roller Co., Ltd., Charles-st., Hatton-gdn., London, E.C. Contractors to H.M. Printing Offices.

Compo. for Home and Export. Send for "Right-Hand of the Press," free by post.

PRINTING MACHINERY OF ALL KINDS—William Dawson & Sons, Ashfield Foundry, Otley, Yorks. Inventors and Patentees of the Original "Wharfedale."

PUMPING MACHINERY MANUFACTURERS—Pulsometer Engineering Co., Limited., Reading, England.

Steam Pumps for all duties, including "The Pulsometer." The best out-door pump.

ROAD MATERIALS—Mountsorrel Granite Company, Limited, Mountsorrel, near Loughborough. Full Particulars and Prices on application. Tele. Address: "Granite, Mountsorrel."

ROCK DRILLS—The Hardy Patent Pick Co., Ltd., Sheffield.

ROPE MANUFACTURERS—R. Hood Haggie & Son (Limited), Newcastle-on-Tyne and London.

Estd. 1789. Makers of Ropes of all kinds. Speciality—Robin Hood Brand Manilla Rope. (Foreign Orders through Merchants.)

RUBBER HEELS—The Revolving Heel Co., Stay-street Mills, Preston. Makers of the famous Wood-Milne Rubber Heels and Heel Tips of all descriptions. Price Lists free.

SAFES, IRON AND STEEL DOORS—Frederic Whitfield & Co., 11 & 12, St. Andrew's Hill, London, E.C.

Works: Oxford-street, Birmingham.

SALT FOR THE TABLE, THE BATH AND THE GARDEN—D. Bumsted & Co., 36, King William-street, London, E.C.

SANITARY POTTER—S. H. Rowley, Swadincote, near Burton-on-Trent. Patentee & Maker of the "Washout" Closet, & of Wash-down Closets, Pedestal Closets, Lavatories, Sinks, Urinals, &c., of finest Quality.

SAUSAGE MANUFACTURERS—Palethorpe, Ltd., Dudley Port, Staffs. Manufacturers of Royal Cambridge Sausages and Pork Pies, &c. Largest Makers in the World. Makers to the late Queen. 12 Gold Medals.

SEALING WAX—George Waterston & Sons, Edinburgh, 8, St. Bride Street, City, London. Makers of the "Bee Brand" Letter, Parcel and Bottle Waxes for all climates.

SEED GROWERS AND MERCHANTS—Sutton & Sons, The King's Seedsmen, Reading.

Farm Seeds, Garden Seeds and Bulbs specially selected and packed for all parts of the World. Full Price Lists free on application.

SHEEP DIP—William Cooper & Nephews, Manufacturers of Cooper's Sheep Dipping Powder, the ORIGINAL POWDER DIP.

Works, Berkhamsted, England. Branch Houses: Sydney, Port Elizabeth, Buenos Aires, Odessa, Chicago and Auckland.

SHIP BISCUITS—Walker, Harrison & Garthwaites, Limited, Phoenix Biscuit Works, Ratcliff Cross, London, E.

SHOT—Abbey Shot Co., Newcastle-on-Tyne. Manufacturers of Improved Chilled Shot, Hard and Soft Shot. Sportsmen speak highly of I. C. S.

SHOVELS AND SPADES—The Hardy Patent Pick Co., Ltd., Sheffield.

SILICATE OF SODA—John Crosfield & Sons, Ltd., Warrington, England. Alkaline and Neutral Lump, 175°, 140°, 100° and 75° Tw. Solutions.

SLATES, SLATE SLABS, CISTERNS, &c., &c.—Davies Bros., Portmadoc, N. Wales. Blue, Red and Green Roofing Slates, Slate Slabs, Urinals, Lavatories, Cisterns, &c. Home and Export. Telegrams "Seivad."

SOAP MANUFACTURERS—The United Alkali Co., Ltd., "Hazlehursts" Soap Works, Runcorn, Cheshire. "Red Maid," "Protector," "Carbolic," "Acme" and "Cashmere" Toilet, and all other qualities.

STEAM ENGINE PACKING—United States Metallic Packing Co., Ltd., Soho Works, Bradford. Telegraphic and Cable Address, "Metallic, Bradford." Codes, A.B.C., and Liebbers.

STEEL—The Hardy Patent Pick Co., Ltd., Sheffield.

STEEL PEN MAKER—W. Mitchell, 44, Cannon-street, London, E.C., and Washington Works, Cumberland-street, Birmingham.

TILE MANUFACTURERS—Craven Dunnill & Co., Limited, Jackfield, R.S.O., Shropshire.

Tiles of all kinds, Encaustic, Plain, Enamelled, Glazed, Majolica, Printed, Painted, Lustre, Ceramic Mosaics, Constructional Faience. London, 37, Maddox-street, W.

TIN BOX MANUFACTURERS—Barringer, Wallis & Manners, Ltd., Mansfield, Notts. Manufacturers of Decorated Tin Boxes for all trades, also Manufacturers of Tin Show Tablets for Advertisements.

TRUNK AND TRAVELLING BAG MANUFRS.—John Pound & Co., 81-84, Leadenhall-street; 67, Piccadilly; 211, Regent-street; 378, Strand; and 177-8, Tottenham Court-road, London.

The largest manufacturers of their kind.

TYPEWRITERS—Remington Standard. (New Model.) All kinds of Typewriter Supplies. Wyckoff, Seamans & Benedict, Proprietors, 100, Gracechurch-st., London, E.C. Telephone Nos. 5545, 5546, 5555 and 5556, Avenue.

WASHING AND MANGLING MACHINES (Hand and Power)—Smith & Paget, Crown Works, Keighley.

WEED KILLER—Acme Chemical Co., Ltd., Tonbridge, Kent, and Bolton, Lancs.

The "Acme" Weed Killer permanently destroys Weeds and Scrubs growing upon walks, roads, &c., by one application.

WEIGHING MACHINES—Henry Pooley & Son, Ltd., 11, Temple-street, Birmingham.

WIRE ROPE AND ROPEWAYS—Bullivant & Co., Limited, 72, Mark-lane, London, E.C.

Wire Ropes for all purposes. Aerial Ropeways, Suspension Bridges, &c.

WOOD BLOCK FLOORING—Goddard & Sons, Patent Wood Block Flooring Works, Farnham, Surrey.

WOOLEN CLOTH MANUFACTURERS—Aperly, Curtis & Co., Limited, Dudbridge Mills, Stroud, Glos.

Vicunas, Serges, Overcoatings, Suitings, &c., &c. 21 Gold Medals and Highest Awards.

Memoranda of Reference, &c.

As Addresses, Quotations, and other matters of Interest.

15

12

Memoranda of Things Lent, &c.

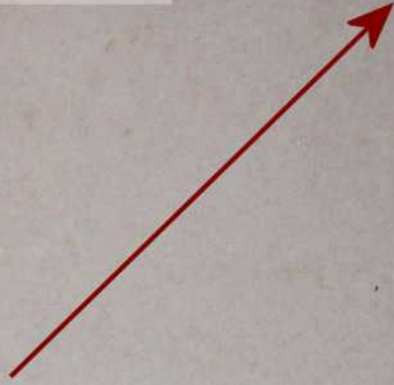
Date.

Article.

To whom lent.

Returned.

This is an example of a plain blotter page, found between all diary pages. Copied only those with notes or interesting ink stains.



Notice the damp/water stains.



Dr.

JANUARY, Cash Account.

Cr.

All "CASH ACCOUNT" pages are blank.
Did NOT copy.

Dr.

ANNUAL CASH SUMMARY.

Cr.

Balance from last year

January

February

March

April

May

June

July

August

September

October

November

December

Balance carried forward

Balance from last year

January

February

March

April

May

June

July

August

September

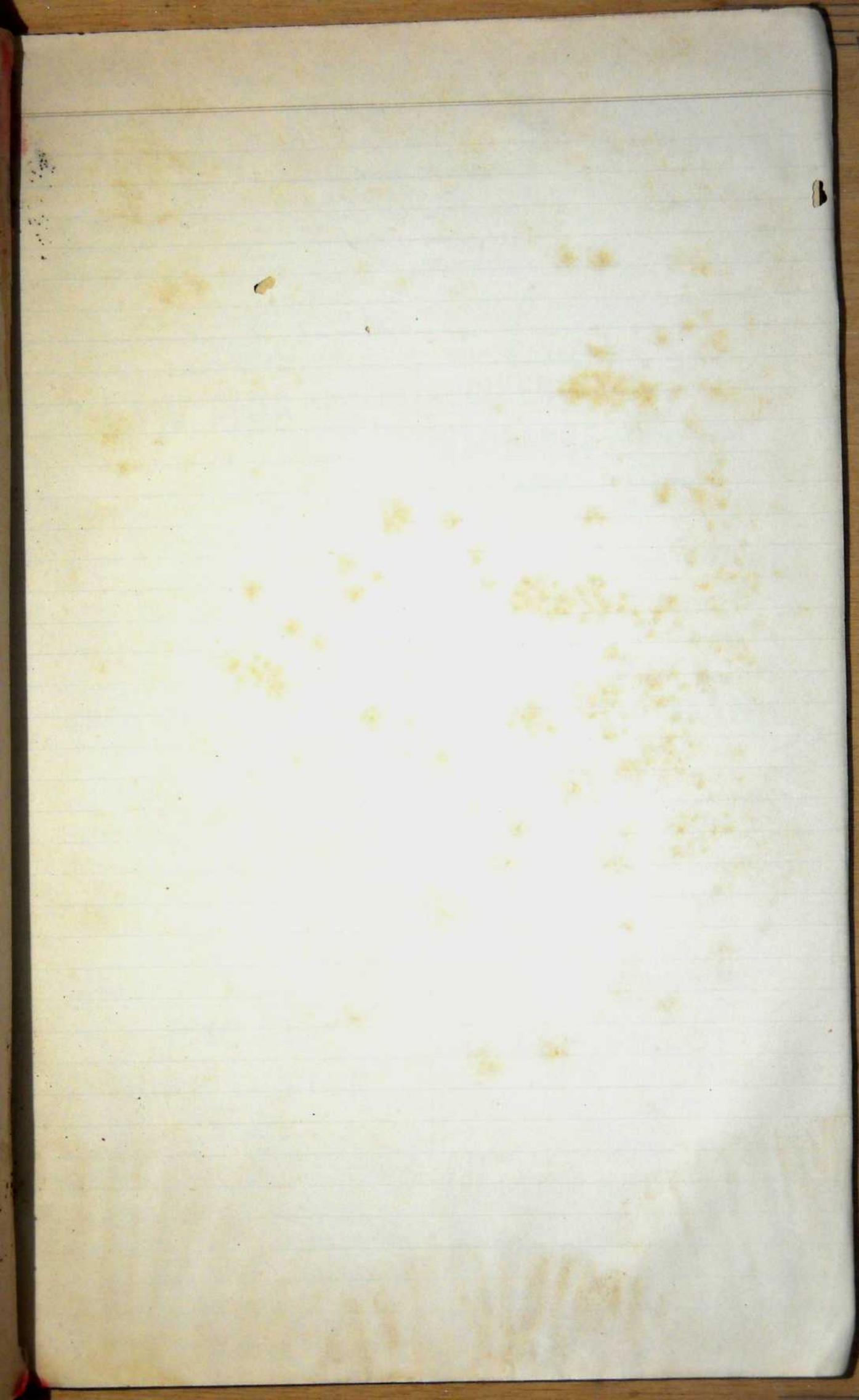
October

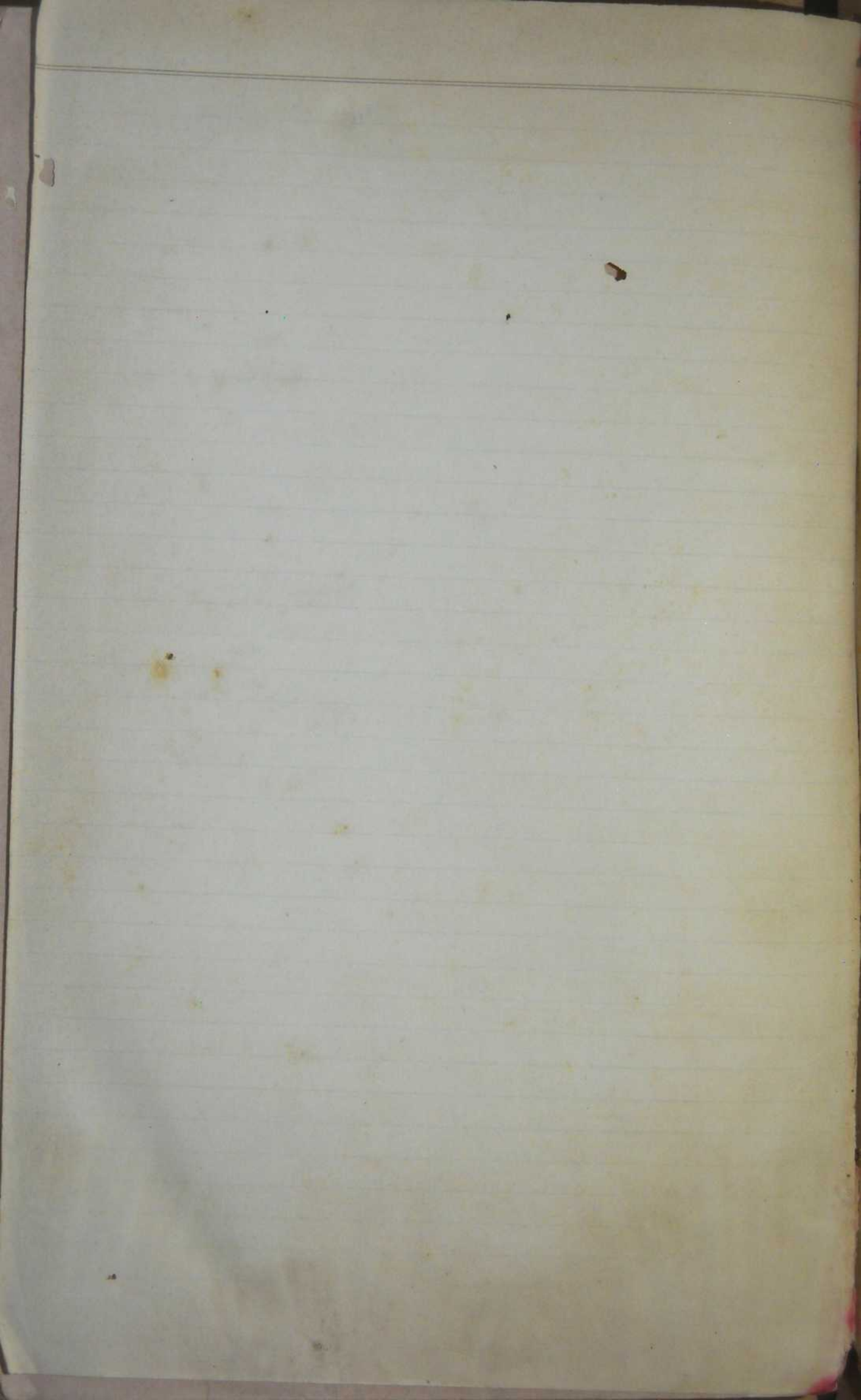
November

December

Balance carried forward







DR. J. COLLIS BROWNE'S CHLORODYNE

Coughs,
Colds,



Asthma,
Bronchitis.

THE ORIGINAL AND ONLY GENUINE.

CHLORODYNE is admitted by the profession to be the most wonderful and valuable remedy ever discovered.

CHLORODYNE is the best remedy known for Coughs, Colds, Consumption, Bronchitis, Asthma.

CHLORODYNE effectually checks and arrests those too often fatal diseases: Diphtheria, Fever, Croup, Ague.

CHLORODYNE acts like a charm in Diarrhoea, and is the only specific in Cholera and Dysentery.

CHLORODYNE effectually cuts short all attacks of Epilepsy, Hysteria, Palpitation, and Spasms.

CHLORODYNE is the only palliative in Neuralgia, Rheumatism, Gout, Cancer, Toothache, Meningitis.

THE ILLUSTRATED LONDON NEWS of Sept. 28, 1895, says:

"If I were asked which single medicine I should prefer to take abroad with me, as likely to be most generally useful, to the exclusion of all others, I should say CHLORODYNE. I never travel without it, and its general applicability to the relief of a large number of simple ailments forms its best recommendation."

None genuine without the words "Dr. J. Collis Browne's Chlorodyne" on the Stamp. Overwhelming Medical testimony accompanies each bottle. Of all Chemists, 1/1, 2/8, and 4/6.

Sole Manufacturers: J. T. DAVENPORT, Ltd., LONDON.

THE LAW FIRE INSURANCE SOCIETY.

114, Chancery Lane, LONDON.

Subscribed Capital = FIVE MILLIONS.

THE success which has attended the operations of the Society is founded on its strong financial position, the eligible character of the risks constituting the bulk of its business, and the promptitude and liberality with which its engagements are met.

Every facility is afforded to Solicitors for the transaction of insurance business on the most favourable terms.

COMMERCIAL UNION ASSURANCE COMPANY, Ltd.

FIRE—LIFE—MARINE—ACCIDENT.

Head Office:

24, 25 & 26, CORNHILL, E.C.

Capital Fully Subscribed - £2,500,000

Life Funds - - - - - £2,619,089

Total Assets Exceed Six and Three-quarter Millions.

Total Annual Income exceeds - £2,500,000

UNDOUBTED SECURITY. MODERATE RATES.
PROMPT AND LIBERAL SETTLEMENTS.

Prospectuses and all information needful for effecting Assurances may be obtained at any of the Company's Offices or Agencies throughout the world.

PHOENIX Assurance Company Limited FIRE OFFICE

BRANCH OFFICES:

West End Office—57, CHARING CROSS, LONDON, S.W.

BIRMINGHAM—Colmore Row; BRISTOL—47, CORN STREET; CARDIFF—119, St. Mary Street; DUBLIN—41, Lower Sackville Street; EDINBURGH—25, George Street; GLASGOW—121, St. Vincent Street; HULL—161 & 162, High Street; LEEDS—8, Park Row; LIVERPOOL—Phoenix Chambers, Exchange; MANCHESTER—18, Cooper Street; NEWCASTLE-ON-TYNE—3, St. Nicholas Buildings; PLYMOUTH—Old Town Street.

AGENCIES THROUGHOUT THE UNITED KINGDOM AND ABROAD.

Insurances effected against Loss by Fire and Lightning in all parts of the World.

Moderate Rates for all Insurances—both ordinary and special. Every Insurable Risk Covered.

This Company has already paid, in satisfaction of Fire Claims, more than **TWENTY-SEVEN MILLIONS STERLING.**

Rates and Particulars of Insurance may be obtained at the Chief and Branch Offices, as above, and from the respective Agents of the Company.

APPLICATIONS FOR AGENCIES INVITED.

ACCIDENT INSURANCE COMPANY

(Limited).

Accidents
Disease
Fidelity Guarantees
Workmen's Compensation
Plate Glass
Burglary

Founded 1849. Claims paid, £1,250,000.

Apply for Particulars and Rates for Insurance.

10, ST. SWITHIN'S LANE, LONDON, E.C.

THOS. POTTER, Manager and Secretary.

BIRKBECK BANK

ESTABLISHED 1851.

CURRENT ACCOUNTS.

2% Interest allowed on minimum monthly balances when not drawn below £100. 2%

DEPOSITS.

2½% Interest allowed on Deposit Accounts. 2½%

Advances made. Stock and Shares bought and sold.

Apply C. F. RAVENSCROFT, Secretary,

SOUTHAMPTON BUILDINGS, HIGH HOLBORN, W.C.

PARIS, 1900.

HIGHEST POSSIBLE AWARD.

JOSEPH GILLOTT'S

The ONLY 'GRAND PRIX' PENS
Exclusively Awarded for Steel Pens.

Nos. FOR BANKERS:—Barril Pens, 225, 226, 262. Slip Pens, 332, 909, 287, 166, 404, 7000. In Fine, Medium, and Broad Points. The turned-up point, 1032.

6d. boxes of any No. 6d. boxes, Samples, 24 Shp or 7 Barril Pens.

VICTORIA WORKS, BIRMINGHAM, ENGLAND.

THE CANCER HOSPITAL (FREE), Fulham Road, London, S.W.

THE only Special Hospital for poor persons afflicted with this fearful disease who are admitted FREE on their own application alone. Upwards of 100 Beds, of which a number are provided for the use of patients who may remain for Life. Out-Patients seen daily at Two o'clock, except Sundays.

Subscriptions and Donations urgently needed for General Purposes and for the Research Department.

Bankers: Messrs. COVATTS & Co., Strand, W.C. FRED. W. HOWELL, Sec.

THE CERES SYSTEM (VERNON'S PATENTS)

TIMES:—"By this system the most complex body of documents can be arranged with admirable simplicity."

THE SIMPLEST OF ALL SYSTEMS.

Papers can be arranged alphabetically, numerically, or classified under any desired headings, in Boxes, Despatch Cases (Japaned Tin or Leather), Drawers, Cabinets, Writing Tables, &c., up to any Scale.

Call and inspect the system at

THE CERES DEPOT,

10, John Street, Adelphi, W.C.

(CLOSE TO CHANCING CROSS)

Or send for Explanatory Pamphlet (post free), quoting this Diary.



WHELPTON'S PILLS

W
W
W
W

AGE
WAR
WITH

INDIGESTION,
CONSTIPATION,
HEADACHE,
BILE.

OF ALL CHEMISTS—
7½d., 1s 1½d and 2s 9d

For Refined Writers ;
For Busy Writers ;
For Office, Study, Boudoir,
The **BEST** Pen is

WATERMAN'S IDEAL FOUNTAIN PEN . . .

No Leaking.
No Blotting.

No Shaking.
No Stopping.

No Spurting.
No Dipping.

JUST RIGHT—ALWAYS WRITE.

From 10/6. In Silver and Gold for Presentation.
OF JEWELLERS, STATIONERS, ETC.

Dainty Illustrated Booklet on these Pens post free from
L. & C. HARDTMUTH, 12, GOLDEN LANE, LONDON, E.C.
(NEW YORK—173, BROADWAY.)

The **BEST PENCIL** the WORLD
-PRODUCES IS-
L. & C. HARDTMUTHS
KOH-I-NOOR PENCIL
HAS COMBINED EXCELLENCIES
NOT TO BE FOUND IN ANY OTHER

- Artists,
- Photographers,
- Teachers,
- and all Workers

Use Them.

BAYLISS, JONES & BAYLISS, LIMITED

PATENT SELF-ADJUSTING
ROUND BAR RAILING. No. 2750.
WITH BLUNT POINTS.

SUITS LEVEL, ALSO UNDULATING GROUND. IT IS DESPATCHED IN BUNDLES, CAN BE FIXED CLOSE UP TO THE BOUNDARY, AND IS, WE BELIEVE, THE CHEAPEST IN THE MARKET.

PRICE F.O.B. LIVERPOOL, FROM 4 FT. HIGH, 4S. 9D. PER YARD.

WIRE FENCING, &c.

DOG KENNEL RAILING **WIRE IRON RUSTLES**

ORNAIMENTAL ENTRANCE GATES AND RAILING - 1122.

LOCK-NUT

THE PATENT "HELICOID."
SECURITY, ECONOMY, DURABILITY.

The more the vibration the tighter the Grip.

A Coil of Steel Gripping automatically with immense power. Made from ½ in. to 2 in. Price from 10/9 per gross.

SAMPLE NUT AND COMPLETE LIST FREE.

BOLTS, SCREWS, DOG-SPIKES, &c.

THE "BAYLISS" PATENT ROLLED TIE-BAR.

MADE IN ONE PIECE. (NO WELDING.)

IRON BARROWS.

PRICE FROM 19S. EACH F.O.B. L'POOL.

ALSO
MANUFACTURERS OF RAILWAY & TRAMWAY FASTENINGS OF EVERY DESCRIPTION.

WOLVERHAMPTON.

VICTORIA WORKS—London Offices & Show Rooms, 139 & 141, Cannon Street, E.C.

LISTS FREE.

LOW PRICES.

THE SCOTTISH WIDOWS' FUND LIFE ASSURANCE SOCIETY

EDINBURGH: 9 ST. ANDREW SQUARE. LONDON: 28 CORNHILL & 5 WATERLOO PL.



ESTABLISHED 1815.

Compound Bonuses, *i.e.* Bonuses on Original Sums Assured and Bonuses in force, were declared at last Division of Profits on 31st Dec. 1901, as under:—

£1:14s. per cent per annum for the seven years 1895 to 1901, or from £1:14s. to £5:4:9d. per cent per annum on Original Sums, according to duration of the Policy.

£1:12s. per cent per annum for the seven years to next division in 1908, or from £1:12s. to £5:10:5d. per cent per annum on Original Sums, according to duration.

FUNDS, £17,000,000. REVENUE, £1,725,000.

THE .. COMPENSATION & GUARANTEE FUND

LIMITED.
Subscribed Capital, £150,000.
Paid-up " £45,000.

WORKMEN'S COMPENSATION, and all kinds of ACCIDENT INSURANCE and FIDELITY GUARANTEES undertaken.

For dealing with Tramways, Light Railways, Motor Cars, Drivers' and other Third Party Risks, the Company has exceptional facilities.

Consideration given to any other assessable contingency.
Vacancies for Efficient Inspectors.

JOHN HENRY SCOTT, *Managing Director.*

Head Office:

149, LEADENHALL ST.
LONDON, E.C.

BRITISH WORKMAN'S & ESTABLISHED 1866. GENERAL ASSURANCE CO., LTD.

Industrial and Ordinary Branches.

ANNUAL INCOME exceeds - - - £900,000
RESERVE FUNDS over - - - £1,150,000
CLAIMS PAID exceed - - - £4,000,000

Applications for Agencies invited.—Gentlemen able to influence good business will find the Company's Agency Terms very remunerative. Full Prospectuses and Terms on application to

S. J. PORT, *Secretary.*

Chief Offices—

BROAD STREET CORNER,
BIRMINGHAM.

IMPRESSIONS FROM
LAMSON PARAGON TYPEWRITER RIBBONS
LAST FOREVER
COPIES MADE WITH
LAMSON PARAGON CARBONIC PAPERS
ENDURE THROUGHOUT ALL AGES
LAMSON PARAGON SUPPLY COMPANY LTD
4. QUEEN STREET, LONDON E.C. FACTORY, CANNING-TOWN. E.

THE GANESH FLOUR MILLS CO., LTD., DELHI.

Capital - - - - - Rs. 4,00,000.
Protective Funds, over - - - - - Rs. 2,25,000.
Average Dividend for 9 years, Rs. 10%. Last Dividend, Rs. 12½% p.a.

Capacity, 22 sacks an hour. Finest Flour in India.

Gold and Silver Medals and Certificates from Industrial Exhibitions.

Largest Mill in India. Sales over 4,00,000 maunds = 286,000 cwt. a year. Correspondence invited with intending purchasers throughout the World.

For further particulars, apply to—

KISHUN CHUND, *Managing Director.*

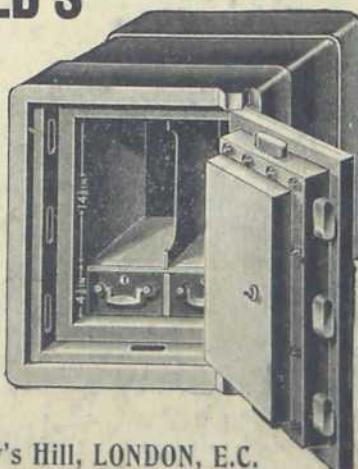
WHITFIELD'S SAFES

AND

STEEL DOORS.

Works:

BIRMINGHAM.



11-12, St. Andrew's Hill, LONDON, E.C.

The
Remington

YOU cannot afford
to do your writing
in the old way!

AFFORDS
THE NEW
WAY.

Typewriter.

Telephone Nos. 5545, 5546, 5555 & 5556 Avenue.

100, Gracechurch Street, E.C.

263, Oxford Street, W. (West-End Branch).

GEORGE SMYTHE & SON,
Paper Makers and Contractors,
ST. BARTHOLOMEW HOUSE, 90-93, FLEET STREET, LONDON.
(Formerly of 46, Cannon Street, E.C.)

SUPERFINE, FINE, AND COMMON PRINTINGS.

ALSO
FRICTION GLAZED AND SUPER CALENDERED PRINTING FOR PROCESS WORK.
White and Tinted News in Webs and Sheets. Fine Art Papers.

ENGINE-SIZED AND TUB-SIZED WRITING PAPERS.

Azure Laid and Yellow Woves, and every Description of Papers for Account Books.
ENGLISH AND FOREIGN TINTED WRITINGS AND PRINTINGS.

Telephones: { Holborn 1887.
Post Office, Central 8364.

Telegrams: "CULVERKEY, LONDON."

And PARIS.

**CALLENDER'S
CABLE**

WRITE FOR CATALOGUE.

AND

CONSTRUCTION Co., LTD.

Hamilton House, Victoria Embankment, LONDON, E.C.

NORTHERN ASSURANCE COMPANY.

ESTABLISHED 1836.

LONDON: 1, Moorgate Street, E.C.

ABERDEEN: 1, Union Terrace.

INCOME AND FUNDS (1903).

Fire Premiums	£1,019,000
Life Premiums	269,000
Interest	226,000
Accumulated Funds	£6,523,000