

Dr.

JANUARY, Cash Account.

Cr.

All Cash Account pages are BLANK.

Dr.

DECEMBER, Cash Account.

Cr.

Dr.

ANNUAL CASH SUMMARY.

Cr.

Balance from last year

January

February

March

April

May

June

July

August

September

October

November

December

Balance carried forward

Balance from last year

January

February

March

April

May

June

July

August

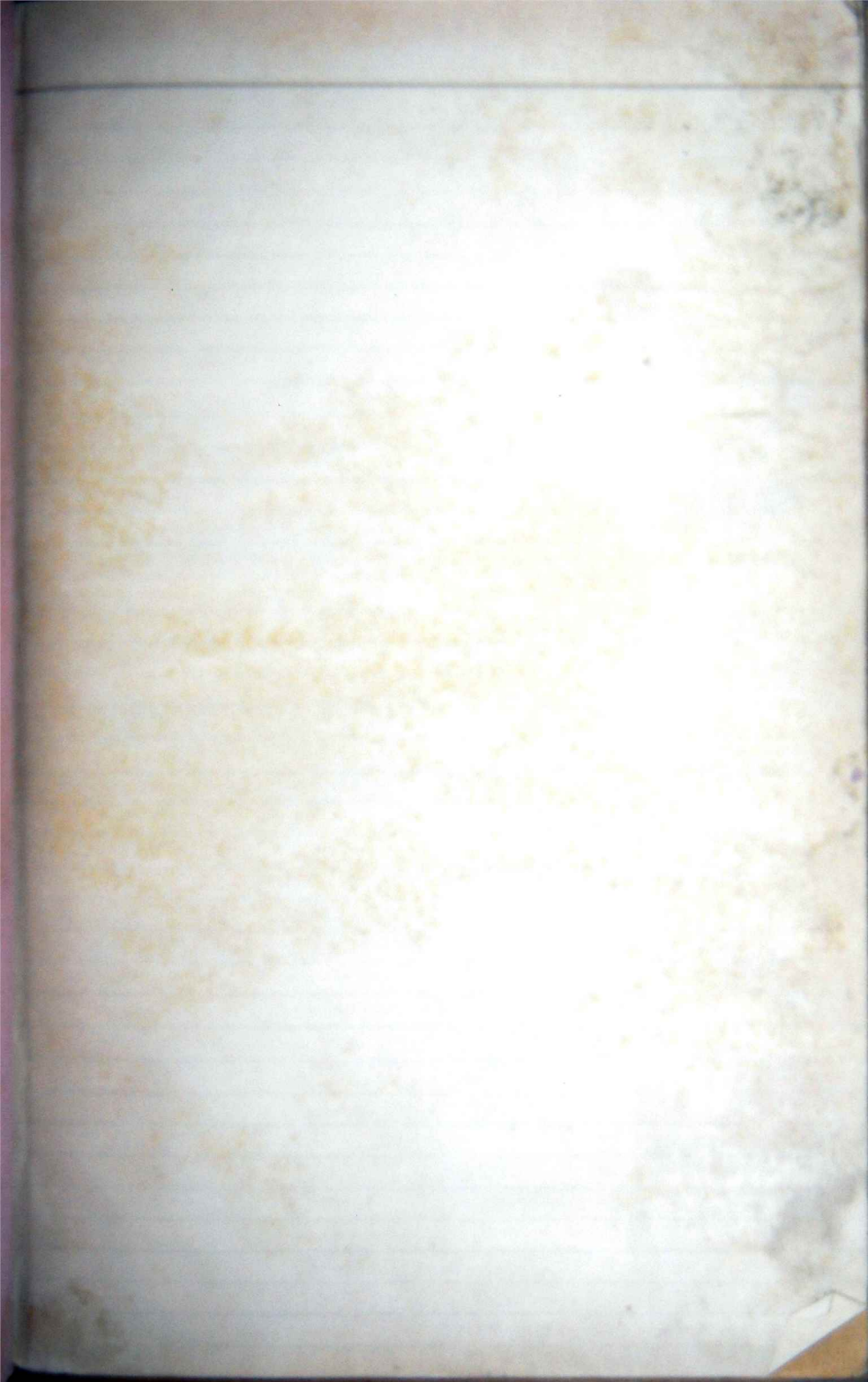
September

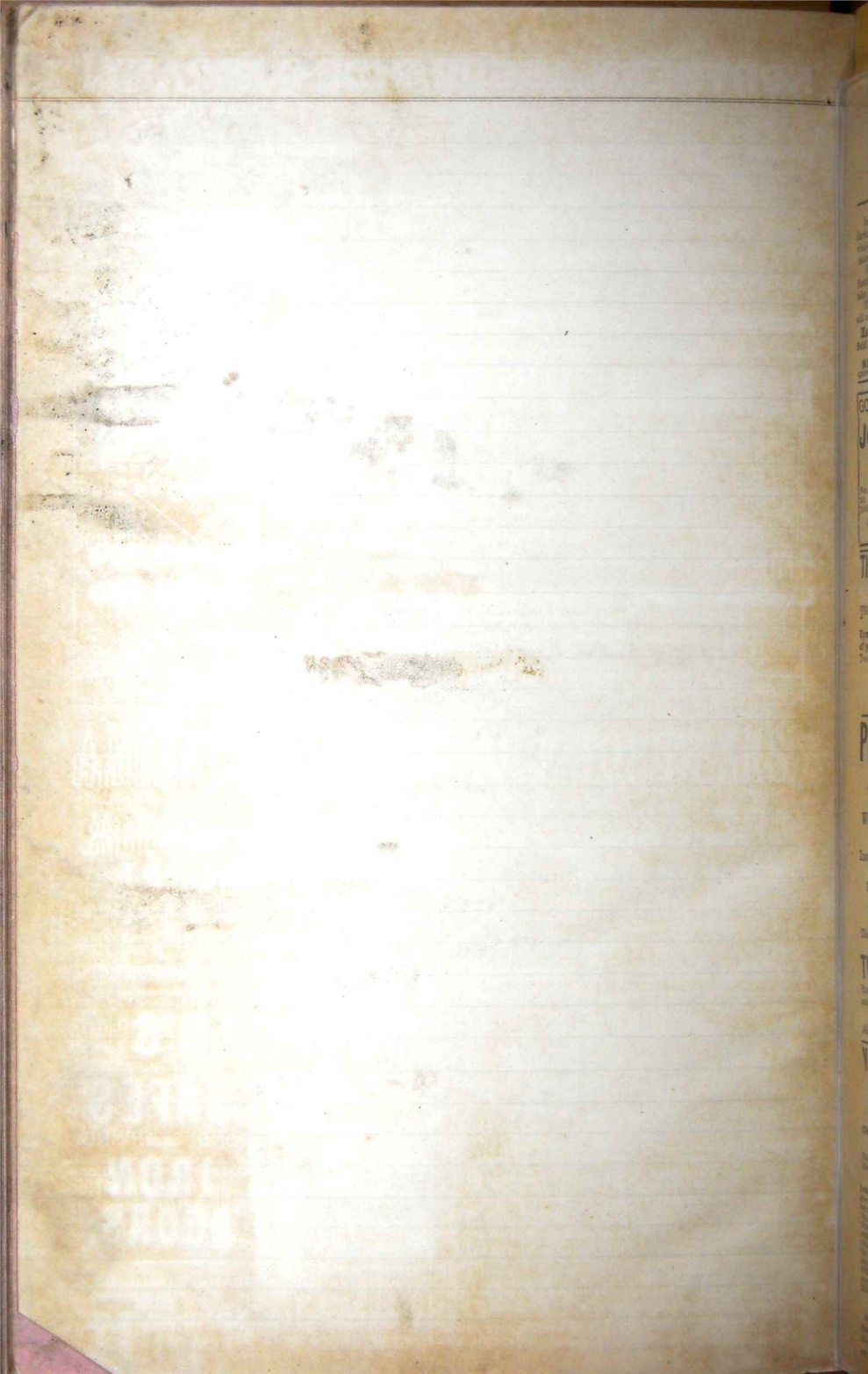
October

November

December

Balance carried forward





THE ORIGINAL FREEMAN'S CHLORODYNE. AND ONLY TRUE



DISCOVERED and invented
Introduced into India in
Australasian Colonies, Egypt, China,
HABITABLE GLOBE.

by Richard Freeman in 1844.
1850, and subsequently into the
and every other part of the

In the following diseases, no matter in what part of the world they are found, FREEMAN'S CHLORODYNE is a special and specific remedy: diarrhoea, acute dysentery (both acute and chronic), ardent, dengue and all other kinds of fever, cramp, colic, gout, neuralgia, rheumatism, wind-stroke, sore throat, influenza, whooping cough, bronchitis, asthma, epilepsy, hysteria, spasms, sun-stroke, convulsions, sciatica, lumbago, cholera, and yellow fever.

Freeman's Chlorodyne allays the irritation of fever, soothes and strengthens the system under exhaustive disease, restores the deranged functions, stimulates healthy action of the secretions of the body, gives quiet and refreshing sleep, and marvellously prolongs life. It may be taken by old and young at all hours and times, according to the directions.

The great characteristic of FREEMAN'S CHLORODYNE is its marvellous power to assuage PAIN of every kind, which no other preparation sold under a similar name possesses in anything like the same degree, has attracted the attention of sufferers in all parts of the world.

Manufactured by the Sole Inventor, **RICHARD FREEMAN, Pharmacist, 70, Kennington Park Road, London, S.E.**
Sold by Chemists and Patent Medicine Dealers in all parts of the world, in bottles, 1s. 1½d.; 2s. 6d.; 4s. 6d.; 8s. 6d.; half-pints, 11s.; and pints, 20s. each.

N.B.—Lord Chancellor Selborne, Lord Justice James, and Lord Justice Mellish, decided in favour of FREEMAN'S ORIGINAL CHLORODYNE, and against Browne and Davenport, compelling them to pay all costs in the suits.—See Times of July 24th, 1873.

GOLD MEDALS, PARIS, 1878, 1889.

JOSEPH GILLOTT'S PENS.
The only Award at Chicago, 1893.

No. for Bankers, &c.: Barrel Pens, 22s. 2½d., 202. Slip Pens, 22s. 9s. 257, 106, 404, 601, 7,000. In Fine, Medium, & Broad Points.

Of Highest Quality; and, having Greatest Durability, are therefore **CHEAPEST.**

THE CANCER HOSPITAL (FREE),
Fulham Road, London, S.W.

The only Special Hospital for poor persons afflicted with this fearful disease who are admitted FREE on their own application alone. Upwards of 100 Beds, of which a number are provided for the use of patients who may remain for Life. Out-Patients seen daily at Two o'clock, except Sundays.

Subscriptions and Donations urgently solicited.

Bankers: Messrs. COURTIS & Co., Strand, W.C.
W. H. HUGHES, Secretary.

PHENIX FIRE OFFICE
Established 1782.

19, LOMBARD STREET, LONDON, E.C.

West End Office: 57, CHARING CROSS, S.W.

Agencies throughout the United Kingdom and abroad.

Insurances effected against Loss by Fire and Lightning in all parts of the World.

Moderate Rates for all Insurances—both ordinary and special.

Every Insurable Risk Covered.

This Company has already paid, in satisfaction of Fire Claims, more than

TWENTY MILLIONS STERLING.

Rates and Particulars of Insurance may be obtained at the CHIEF and BRANCH OFFICES as above, and from the respective Agents of the Company.

APPLICATIONS FOR AGENCIES INVITED.

YORKSHIRE FIRE AND LIFE INSURANCE COMPANY.

(Established at York, 1821, and empowered by Act of Parliament.)

CAPITAL, £500,000. ACCUMULATED FUND, £1,078,456
ANNUAL INCOME, £223,111.

This Company has been established more than 70 years. Ample time has therefore elapsed to test the soundness of the principles upon which it has been conducted.

IMMEDIATE PAYMENT OF CLAIMS. WORLD-WIDE FREEDOM OF TRAVEL after the first year. POLICIES INDISPENSABLE. POLICIES KEPT IN FORCE FOR TWELVE MONTHS, with right of revival without fresh proof of health. FULL SURRENDER VALUES AUTOMATICALLY PLACED TO ASSURED'S CREDIT. FIXED AND LIBERAL SURRENDER VALUES. PAID-UP POLICIES on an equally liberal scale. FOUR-FIFTHS OF THE PROFITS DIVIDED EVERY FIVE YEARS among the participating policy holders. INTERMEDIATE BONUS at the rate of two-thirds of the last bonus declared and upon Matured Endowments at the same rate. NO CHARGE MADE for stamps or medical fees. FIRE INSURANCES effected by the Company on the most moderate terms, according to the nature of the risk. SPECIAL RISKS.—Insurances on Mills and other Special Risks, at moderate Premiums, according to the risk.

Head Office—ST. HELEN'S SQUARE, YORK.

Branch Offices: London—29, Old Broad Street, E.C. Liverpool—16, Tithebarn Street. Hull—Leopold, Birmingham—86, Colmore Row. Manchester—3, Cross Street. Glasgow—City Hall Buildings, 24, St. Vincent Place. Leeds—5, East Parade. Sub-Managers: BRYAN E. COCKSON, Sec. & General Manager; J. A. CROFTON.

ANNUITIES

This Company having its Funds

very profitably and safely

invested, is able to offer

the best Terms.



SUN LIFE ASSURANCE COMPANY OF CANADA

FUNDS

£1,283,005

Added last year

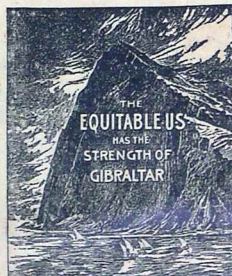
£205,375

Apply for rates to
Chief Office for United Kingdom.

42, POULTRY, LONDON, E.C.

General Manager—S. J. EYRE HARTLEY.

THE
EQUITABLE Life Assurance
Society of the United States.



ASSETS EXCEED

45 Millions Sterling.

SURPLUS EXCEEDS

8½ Millions Sterling.

TOTAL INCOME EXCEEDS

9½ Millions Sterling.

During less than 38 years
THE EQUITABLE, of the
United States, has paid to
Policy-holders

OVER 52½ MILLIONS STERLING.

The Amount already disbursed, together with what is still held in trust for Policy-holders, reaches a grand total of **97½ Millions Sterling.**

This sum exceeds by **44½ Millions Sterling** what any other Life Company has, within the corresponding period of its history, accumulated and paid.

Head Office for the United Kingdom—

6, PRINCES STREET, BANK, LONDON, E.C.

A. MONKSTRICK and W. THORP,

General Managers.

Remington Typewriter.

IT MEANS BUSINESS.

Correspondence efficiently conducted means business.

Typewritten correspondence means greater efficiency all round. Saving of time in writing; legibility and expressiveness in letters; and is welcome to the recipients.

WHY THE REMINGTON?

Because, mainly, of its simplicity, durability and strength.

IT IS RELIABLE.

Because, notwithstanding its simplicity, it is thoroughly progressive, embodying all practical improvements applicable to the typewriter.

Let us send you a Catalogue.

WYCKOFF, SEAMANS & BENEDICT, 100, Gracechurch Street, London, E.C.
(Corner of Leadenhall Street).

WHELPTON'S PILLS

THE BEST FAMILY MEDICINE.

Are one of those Pure Medicines which for their extraordinary properties have gained an almost **UNIVERSAL REPUTATION.** Recommended for Disorders of the Head, Chest, Bowels, Liver, and Kidneys.



ESTABLISHED
1835.

WHELPTON'S PILLS & OINTMENT

WHELPTON'S
HEALING
OINTMENT.

The best remedy for
BURNS, SCALDS, ULCERS, and
all SKIN DISEASES.

7d., 1s. 1d. & 2s. 9d., of all
Chemists. Free by Post in the United
Kingdom for 8, 14 or 33 Stamps.

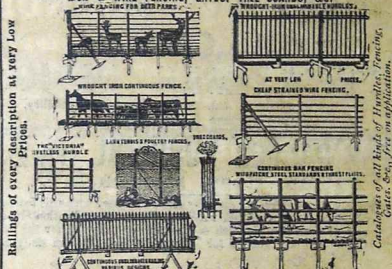
Proprietors:

G. WHELPTON & SON,

3, CRANE COURT, FLEET STREET, LONDON, E.C.

BAYLISS, JONES & BAYLISS'

IRON & WIRE FENCING, GATES, TREE GUARDS, &c.



Illustrations of every description at very Low Prices.

VICTORIA WORKS, WOLVERHAMPTON.

London Offices & Show Rooms—129 & 141, CANNON ST., E.C.

Please mention this paper.

Illustrations of all kinds of Fencing, Gates, &c., free on application.

AMERICAN DERBY ROLL TOP DESKS.

Suitable
for the
HOME
for
BANKS,
for
PUBLIC
and
PRIVATE
OFFICES.

THE DESK
IS A COM-
PLETELY
FITTED
OFFICE IN
ITSELF.



All sizes,
in Oak or
Walnut.
The closing
of the top
automati-
cally locks
all the
drawers.

Prices from

£7 7 0

Send for
Illustrated
Detailed
Catalogue.

Elegant in Design and of the most Ingenious Construction.
SUITABLE FOR THE HOME, FOR BANKS, FOR PUBLIC AND PRIVATE OFFICES.

THE DESK IS A COMPLETELY FITTED OFFICE IN ITSELF.
All Sizes in Oak or Walnut. The closing of the top automatically locks all the drawers.

THE DERBY DESK IS THE STANDARD FOR COMPARISON.

Prices from **£7 7 0**

SEND FOR ILLUSTRATED DETAILED CATALOGUE.

Sole Importer—**THOMAS TURNER,**

44, HOLBORN VIADUCT, LONDON, E.C., & 9, NEWARKE STREET, LEICESTER.

SEE ALSO MY ADVERTISEMENT OUTSIDE THE BACK COVER.

NORTHERN ASSURANCE COMPANY.

ESTABLISHED 1836.

LONDON: 1, Moorgate Street, E.C.

ABERDEEN: 1, Union Terrace.

INCOME AND FUNDS (1896).

Fire Premiums...	£700,000
Life Premiums...	243,000
Interest ...	178,000

Accumulated Funds ... £4,893,000

NORWICH UNION FIRE OFFICE.

FOUNDED 1797.

Head Office: SURREY STREET, NORWICH.

London Offices: 50, FLEET STREET, E.C.; 71, KING WILLIAM STREET, E.C.;
195, PICCADILLY, W.; and 1, VICTORIA STREET, S.W.

Amount Insured	- - -	£330,000,000
Losses Paid	- - -	12,000,000

Lowest Rates of Premium. Prompt and Liberal Settlement of Losses.

APPLICATIONS FOR AGENCIES INVITED.

ROYAL INSURANCE BUILDINGS,
1, NORTH JOHN STREET,
LIVERPOOL.

ROYAL INSURANCE BUILDINGS,
28, LOMBARD STREET,
LONDON.

FIRE

Invested Funds
£8,929,085



LIFE

Annual Income
£2,836,697

Absolute Security combined with Moderate Rates of Premium.



EAGLE
INSURANCE
COMPANY.
Established 1807.

Head Office: 79, Pall Mall, London, S.W.
City: 41, Threadneedle Street, E.C.

Birmingham: 104, COLMORE ROW. | Leeds: 5, SOUTH PARADE.
Bristol: 11, CLARE STREET. | Manchester: 54, CROSS STREET.

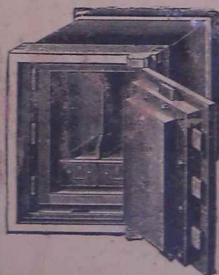
THE REPORT OF THE DIRECTORS for the year ending December 31, 1896, states that New Assurances to the extent of £419,128 were effected, the Premiums received in respect of which amounted to £18,288. Of this amount £59,100 was re-assured at Premiums amounting to £2,553. The consideration for Annuities granted was £74,014. Claims on decease of lives amounted to £190,964, and those on attainment of prescribed ages to £3,132.

The net result of these operations was to increase the Funds of the Company by the substantial sum of £33,500.

Accumulated Funds ...	£2,560,000
Annual Income ...	£260,000
Claims paid during past 49 years ...	£12,000,000

Revised Prospectus on Application.

WHITFIELD'S
SAFES
And
IRON
DOORS.



Works:-
BIRMINGHAM.

20, CHEAPSIDE, LONDON, E.C.

LIBRARY AND OFFICE FURNITURE.

American Derby Roll Top Desks.

Typewriter Desks.

Globe Letter-Filing Cabinets.

Document Cabinets.



Derby Desks and Globe Files

ARE THE
STANDARD for Comparison.

All Prices in Stock from

£6 6 0

Best Quality of Material and
Workmanship in all our Goods.

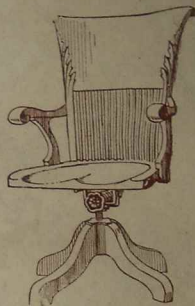


15-FILE CABINET.

Card Index Files.

Catalogue Cabinets.

Wernicke Elastic Bookcases.



Revolving and Tilting Chairs.

Revolving Bookcases.

Folding Card Tables.

Send for Illustrated Catalogues or call and
Inspect our Stock.

THOMAS TURNER 44, Holborn Viaduct, London, E.C.
7 & 9, Newarke Street, Leicester.

SEE ALSO MY ADVERTISEMENT INSIDE THIS COVER.

MILKMAID BRAND CONDENSED MILK



Excellent for making

Rice Puddings,

Tapioca Puddings,

Macaroni Puddings,

Blanc-Manges,

Custards,

Bread and Butter Puddings,

&c., &c., &c.

THE MOST NUTRITIOUS COCOA.

EPPS'S

GRATEFUL—COMFORTING.

COCOA

FOR BREAKFAST AND SUPPER.

Always Order

Whisky and Schweppe

OR

Brandy and Schweppe,

otherwise waters of inferior quality are often supplied.

SCHWEPPE'S WATERS ARE SUPPLIED TO THE QUEEN.

Works: Hendon.

Head Office: 51, Berners Street, London.