

**Letts's**

**No. 31**

**INDIAN AND COLONIAL**

**ROUGH <sup>S</sup> DIARY**

WITH A WEEK IN AN OPENING,

FOR

**1903.**



Price 1s. 6d., or with Blotting, 2s. 6d.

Interleaved Blotting with Cloth Boards, 4s. 6d.

An Edition giving more space (No. 42) is published at 3s.  
CLOTH, Plain, 4s., Interleaved Blotting, 5s.

PUBLISHED FOR

**Letts's Diaries Company, Limited,**

BY

**CASSELL & COMPANY, Limited, London, Paris, New York and Melbourne.**



Haciendas al Rosario

Carretera Mínimo 2 Wagoner  $\$4$  salida del tren, llegan al Matadero wagon  $\$34.45$

Llaneros 2  
 $\$160$  animales

Dr. Juan G  
 a/c Banco Al  
 Transatl  
 B. A.

Freight 20 m

Jardos  $1.20 \times 0.78 \times 23.5 = 21.996$  cub. mt.  
 to R (net lineal 0.936)

21.996  
 to R 966  
 962  
 106  
 856

cañal  
 5.00  
 0.78 m  
 23.5 m  
 1.20 m

ses  
 bly



ROYAL INSURANCE BUILDINGS,  
1, NORTH JOHN STREET,  
LIVERPOOL.

ROYAL INSURANCE BUILDINGS,  
28, LOMBARD STREET,  
LONDON.

**FIRE**

TOTAL FUNDS,

£12,000,000



**LIFE**

ANNUAL INCOME,

EXCEEDS  
£3,000,000

Absolute Security.

Moderate Rates of Premium.

Liberal Policy Conditions.

# SUN FIRE OFFICE

HEAD OFFICE:

63, Threadneedle Street, London, E.C.

BRANCH OFFICES IN LONDON:

60, Charing Cross, S.W.

332, Oxford Street (corner of Vere Street), W.

40, Chancery Lane (Law Courts Branch), W.C.

42, Mincing Lane, E.C.

SUM INSURED IN 1901 EXCEEDED £460,000,000.

Insurances accepted in all parts of the World.



# THE STANDARD LIFE ASSURANCE COMPANY.

ESTABLISHED 1825.

REVENUE

BO

A

CI

BRANC

LOND

*Leti laura a B. Aires hasta el  
salpion Mercado Central.  
en lienzos \$ 34 1000 Kilo  
en fardo \$ 14.62 " " menor d. 5000 K  
" \$ 10.54 " " 5000 K y arriba*

£1,200,000.  
000.  
000.  
000.

countries abroad.

East, S.W.

60, Upper Bucking Street.



# THE LAW GUARANTEE AND TRUST SOCIETY, LIMITED.

Capital Fully Subscribed .. £2,000,000.  
Reserves .. £180,000.

**FIDELITY GUARANTEES.**  
**MORTGAGE INSURANCE.**  
**DEBENTURE INSURANCE.**  
**LICENSE INSURANCE.**  
**CONTINGENCY INSURANCE** (re Defects in Title, Lost Documents, Missing Beneficiaries, &c.).  
**TRUSTEESHIPS** under Wills, Marriage Settlements, &c., and for Debenture Holders.  
**SINKING FUND** and  
**LEASEHOLD REDEMPTION POLICIES.**  
Head Office—49, CHANCERY LANE, LONDON, W.C.  
City Office—56, MOORGATE STREET, E.C.



Security, £3,500,000.

Head Offices: 45, DALE STREET, LIVERPOOL.  
73—76, KING WILLIAM STREET, LONDON, E.C.

Applications specially invited from Agents representing purely Life Companies.  
Liberal Commission Allowed.

# THE BRITISH LAW FIRE INSURANCE COMPANY, LIMITED.

5, LOTHBURY, LONDON, E.C.

(With Branches throughout the Kingdom.)

Subscribed Capital - - - ONE MILLION.

Paid-up Capital & Reserve - £150,000.

Gentlemen in a position to introduce Business are invited to undertake Agencies.

FOUNDED 1823

# THE EDINBURGH LIFE ASSURANCE COMPANY

THE OLDEST SCOTTISH ASSURANCE COMPANY

transacting Life Assurance, Endowment, and Annuity Business alone—without Fire, Marine or other risks—which affords the Additional Security of a Substantial Capital (£500,000), besides a large ACCUMULATED ASSURANCE AND ANNUITY FUND, which now approaches

**£3,750,000.**

MODERATE PREMIUMS. POLICIES WORLD-WIDE.

Manager and Actuary

ARCHIBALD HEWAT, F.F.A., F.I.A.

Head Office: 22, GEORGE ST., EDINBURGH.

London Office: 11, KING WILLIAM STREET, E.C.

EVERY HOUSEHOLD AND TRAVELLING TRUNK OUGHT TO CONTAIN A BOTTLE OF

# ENO'S 'FRUIT SALT'

AN INVALUABLE REMEDY FOR PREVENTING AND CURING BY NATURAL MEANS.



All Functional Derangements of the Liver,  
Temporary Congestion arising from Alcoholic  
Beverages, Errors in Diet—Eating or Drinking—  
Biliousness, Sick Headache, Vomiting, Sourness of  
the Stomach, Constipation, Thirst, Skin  
Eruptions, Feverish Cold with High Temperature  
and Quick Pulse,  
Throat Affections, and Fevers of all kinds.

WITHOUT SUCH A SIMPLE PRECAUTION

**The Jeopardy of Life is immensely increased.**

**FIFTEEN YEARS' EXPERIENCE.** "You may be interested to know that I have used 'FRUIT SALT' for more than fifteen years, and it is the only medicine I need. It was ordered for me by a most eminent Physician, and I have recommended it to very many from time to time. Yours faithfully,

(Signed) Rev. ————" (September 20th, 1900.)

The effect of Eno's 'Fruit Salt' on any Disordered and Feverish condition is Simply Marvellous. It is in fact Nature's Own Remedy, and an Unsurpassed One.

**CAUTION.**—Examine the Bottle and Capsule and see that they are marked ENO'S 'FRUIT SALT,' otherwise you have been imposed upon by a WORTHLESS Imitation.

Prepared only by J. C. ENO, Ltd., at the 'FRUIT SALT' WORKS, LONDON, S.E., by J. C. ENO'S Patent.



# Letts's

## INDIAN AND COLONIAL DIARY AND ALMANAC

FOR

### 1903

BEING THE THIRD YEAR OF THE REIGN OF HIS MAJESTY KING EDWARD VII.—(Accession, January 22, 1901).

#### FOLIO SERIES.

No.						Plain.		Inter. Blotting.		Blotting Cloth.	
						s.	d.	s.	d.	s.	d.
No. 31	Week in opening ..	..	..	..	..	1	6	2	6	4	6
" 32	Week on page ..	..	..	..	..	—	—	1	6	—	—
	(pages divided perpendicularly)										
" 37	Week on page ..	..	..	..	cloth back	—	—	1	0	—	—
" 39	Week in opening..	..	..	..	cloth back	—	—	1	6	—	—
" 41	One day on page..	..	..	..	cloth back	5	0	—	—	8	0
" "	One day on page..	..	..	..	bound cloth	6	6	—	—	—	—
" 42	Two days on page	..	..	..	cloth back	3	0	—	—	5	0
" "	Two days on page	..	..	..	bound cloth	4	0	—	—	—	—
" 48	Two days on page	..	..	..	cloth back	—	—	3	6	—	—

PUBLISHED FOR

LETTS'S DIARIES COMPANY, LIMITED,

BY

## CASSELL & COMPANY, LIMITED,

LONDON, PARIS, NEW YORK AND MELBOURNE.

[ALL RIGHTS RESERVED.]

*Letts's Diaries can be obtained at all the principal Booksellers throughout the World.*

For a Full Description whereby to obtain a Counterpart of this Diary, see back of Order Form.

*Cassell, Watson & Viney, Ltd., Printers, London & Aylesbury.*



# CALENDAR FOR 1903.

JANUARY, 1903.					FEBRUARY, 1903.					MARCH, 1903.				
FIRST MONTH—THIRTY-ONE DAYS.					SECOND MONTH—TWENTY-EIGHT DAYS.					THIRD MONTH—THIRTY-ONE DAYS.				
M. W. Y.	SUNDAYS, &c.	High Water at Lon. Bridge. A.M.   P.M.	M. W. Y.	SUNDAYS, &c.	High Water at Lon. Bridge. A.M.   P.M.	M. W. Y.	SUNDAYS, &c.	High Water at Lon. Bridge. A.M.   P.M.						
1 Th.	1 Circumcision. New Year's Day.	3 20 3 37	1 S.	32 4 after Epiphany	4 9 4 25	1 S.	60 1 in Lent. Ember Wk. [St. David]	3 11 3 26						
2 F.		3 53 4 11	2 M.	33 Purification Vir. Mary	4 41 4 58	2 M.	61	3 44 4 0						
3 S.		4 28 4 44	3 Tu.		5 14 5 33	3 Tu.	62	4 17 4 35						
4 S.	2 after Christmas	5 2 5 19	4 W.		5 50 6 11	4 W.	63 Ember Day	4 52 5 10						
5 M.		5 38 5 57	5 Th.		6 33 6 56	5 Th.	64	5 26 5 45						
6 Tu.	6 Epiphany	6 19 6 40	6 F.		7 23 7 54	6 F.	65 Ember Day	6 9 6 33						
7 W.		7 4 7 31	7 S.		8 27 9 5	7 S.	66 Ember Day	7 2 7 32						
8 Th.		7 59 8 30	8 S.	39 Septuagesima Sunday	9 50 10 32	8 S.	67 2 in Lent	8 7 8 46						
9 F.		9 7 9 46	9 M.		11 13 11 52	9 M.	68	9 31 10 16						
10 S.		10 22 10 58	10 Tu.		— 0 27	10 Tu.	69	11 2 11 41						
11 S.	1 after Epiphany	11 36 —	11 W.		0 57 1 24	11 W.	70	— 0 15						
12 M.		0 10 0 39	12 Th.		1 50 2 15	12 Th.	71	0 44 1 11						
13 Tu.		1 6 1 35	13 F.		2 38 3 0	13 F.	72	1 36 1 59						
14 W.		2 1 2 26	14 S.		3 23 3 44	14 S.	73	2 20 2 40						
15 Th.		2 51 3 15	15 S.	40 Sexagesima Sunday	4 5 4 25	15 S.	74 3 in Lent	3 1 3 21						
16 F.		3 39 4 3	16 M.		4 48 5 5	16 M.	75	3 40 3 59						
17 S.		4 26 4 50	17 Tu.		5 24 5 42	17 Tu.	76 St. Patrick	4 19 4 37						
18 S.	2 after Epiphany	5 11 5 32	18 W.		6 2 6 23	18 W.	77	4 53 5 12						
19 M.		5 52 6 15	19 Th.		6 43 7 7	19 Th.	78	5 29 5 47						
20 Tu.		6 37 7 0	20 F.		7 33 8 1	20 F.	79	6 9 6 30						
21 W.		7 26 7 53	21 S.		8 36 9 14	21 S.	80	6 53 7 19						
22 Th.	22 King's Accession, 1901 [Edward VII.]	8 21 8 53	22 S.	53 Quinquagesima Sun.	9 59 10 43	22 S.	81 4 in Lent	7 49 8 24						
23 F.		9 31 10 13	23 M.		11 21 11 54	23 M.	82	9 3 9 49						
24 S.	24 Proclamation, King	10 51 11 26	24 Tu.	55 Shrove Tuesday. St. Matthias, Ap. [begins]	— 0 26	24 Tu.	83	10 32 11 10						
25 S.	25 3 after Epiphany. Con- [version of St. Paul]	— 0 0	25 W.	56 Ash Wednesday. Lent [begins]	0 52 1 13	25 W.	84 Annunciation. Lady [Day]	11 42 —						
26 M.		0 30 0 56	26 Th.		1 32 1 52	26 Th.	85	0 12 0 37						
27 Tu.		1 18 1 38	27 F.		2 10 2 24	27 F.	86	0 58 1 17						
28 W.		1 57 2 15	28 S.		2 39 2 56	28 S.	87	1 35 1 53						
29 Th.		2 32 2 46				29 S.	88 5 in Lent	2 9 2 26						
30 F.		3 3 3 20				30 M.	89 Mohammedan Year [1321 begins]	2 42 2 59						
31 S.		3 36 3 52				31 Tu.	90	3 17 3 34						

APRIL, 1903.					MAY, 1903.					JUNE, 1903.				
FOURTH MONTH—THIRTY DAYS.					FIFTH MONTH—THIRTY-ONE DAYS.					SIXTH MONTH—THIRTY DAYS.				
M. W. Y.	SUNDAYS, &c.	High Water at Lon. Bridge. A.M.   P.M.	M. W. Y.	SUNDAYS, &c.	High Water at Lon. Bridge. A.M.   P.M.	M. W. Y.	SUNDAYS, &c.	High Water at Lon. Bridge. A.M.   P.M.						
1 W.	91	3 53 4 11	1 F.	121 SS. Philip & James, [App.]	4 15 4 38	1 M.	152 Whitsun Monday	5 42 6 10						
2 Th.	92	4 31 4 50	2 S.	122	5 0 5 23	2 Tu.	153 Whitsun Tuesday	6 38 7 7						
3 F.	93	5 10 5 32	3 S.	123 3 after Easter	5 49 6 17	3 W.	154 Prince of Wales born, 1865. Ember Day	7 38 8 9						
4 S.	94	5 56 6 22	4 M.	124	6 44 7 16	4 Th.	155	8 42 9 19						
5 S.	95 Palm Sunday	6 49 7 22	5 Tu.	125	7 51 8 28	5 F.	156 Ember Day	9 55 10 28						
6 M.	96	7 58 8 37	6 W.	126	9 7 9 47	6 S.	157 Ember Day	11 0 11 32						
7 Tu.	97	9 21 10 6	7 Th.	127	10 26 10 59									
8 W.	98	10 46 11 23	8 F.	128	11 32 —	7 S.	158 Trinity Sunday	— 0 2						
9 Th.	99 Maundy Thursday	11 56 —	9 S.	129	0 1 0 27	8 M.	159	0 28 0 51						
10 F.	100 Good Friday	0 26 0 52	10 S.	130 4 after Easter	0 51 1 13	9 Tu.	160	1 13 1 36						
11 S.	101 Easter Even	1 14 1 38	11 M.	131	1 36 1 56	10 W.	161	1 56 2 16						
12 S.	102 Easter Day	1 59 2 17	12 Tu.	132	2 15 2 33	11 Th.	162 St. Barnabas, Ap. [Corpus Christi]	2 35 2 52						
13 M.	103 Easter Monday	2 37 2 56	13 W.	133	2 53 3 11	12 F.	163	3 10 3 28						
14 Tu.	104 Easter Tuesday	3 15 3 34	14 Th.	134	3 29 3 48	13 S.	164	3 46 4 4						
15 W.	105	3 52 4 11	15 F.	135	4 6 4 22	14 S.	165 1 after Trinity	4 22 4 39						
16 Th.	106	4 28 4 44	16 S.	136	4 41 4 58	15 M.	166	4 56 5 13						
17 F.	107	5 3 5 20	17 S.	137 Rogation Sunday	5 16 5 34	16 Tu.	167	5 32 5 52						
18 S.	108	5 40 6 1	18 M.	138 Rogation Day	5 56 6 17	17 W.	168	6 13 6 35						
19 S.	109 1 after Easter. Low [Sunday]	6 23 6 48	19 Tu.	139 Rogation Day	6 42 7 8	18 Th.	169	6 58 7 25						
20 M.	110	7 13 7 44	20 W.	140 Rogation Day	7 34 8 7	19 F.	170	7 50 8 19						
21 Tu.	111	8 17 8 55	21 Th.	141 Ascension Day	8 39 9 14	20 S.	171	8 51 9 28						
22 W.	112	9 35 10 13	22 F.	142	9 50 10 21	21 S.	172 2 after Trinity	10 0 10 34						
23 Th.	113 St. George	10 49 11 21	23 S.	143	10 54 11 24	22 M.	173	11 4 11 34						
24 F.	114	11 51 —	24 S.	144 after Ascension. Queen [Victoria born, 1819]	11 52 —	23 Tu.	174	— 0 4						
25 S.	115 St. Mark, Evan.	0 14 0 36	25 M.	145	0 15 0 37	24 W.	175 St. John, Bapt.	0 30 0 55						
26 S.	116 2 after Easter	0 56 1 15	26 Tu.	146	1 0 1 22	25 Th.	176	1 21 1 47						
27 M.	117	1 34 1 54	27 W.	147	1 45 2 8	26 F.	177	2 12 2 38						
28 Tu.	118	2 12 2 31	28 Th.	148	2 29 2 53	27 S.	178	3 3 3 28						
29 W.	119	2 49 3 12	29 F.	149	3 15 3 38	28 S.	179 3 after Trinity	3 52 4 18						
30 Th.	120	3 31 3 52	30 S.	150	4 1 4 27	29 M.	180 St. Peter, Ap.	4 43 5 6						
			31 S.	151 Whit Sun. Ember Wk.	4 52 5 16	30 Tu.	181	5 31 5 58						

APRIL, 1903.				MAY, 1903.				JUNE, 1903.			
FOURTH MONTH—THIRTY DAYS.				FIFTH MONTH—THIRTY-ONE DAYS.				SIXTH MONTH—THIRTY DAYS.			
M. W. Y.	SUNDAYS, &c.	High Water at Lon. Bridge. A.M.   P.M.		M. W. Y.	SUNDAYS, &c.	High Water at Lon. Bridge. A.M.   P.M.		M. W. Y.	SUNDAYS, &c.	High Water at Lon. Bridge. A.M.   P.M.	
1 W. 91		3 53   4 11		1 F. 121	SS. Philip & James, [App.]	4 15   4 38		1 M. 152	Whitsun Monday	5 42   6 10	
2 Th. 92		4 31   4 50		2 S. 122		5 0   5 23		2 Tu. 153	Whitsun Tuesday	6 38   7 7	
3 F. 93		5 10   5 32		3 S. 123	3 after Easter	5 49   6 17		3 W. 154	Prince of Wales born, [1865. Ember Day]	7 38   8 9	
4 S. 94		5 56   6 22		4 M. 124		6 44   7 16		4 Th. 155		8 42   9 19	
5 S. 95	Palm Sunday	6 49   7 22		5 Tu. 125		7 51   8 28		5 F. 156	Ember Day	9 55   10 28	
6 M. 96		7 58   8 37		6 W. 126		9 7   9 47		6 S. 157	Ember Day	11 0   11 32	
7 Tu. 97		9 21   10 6		7 Th. 127		10 26   10 59		7 S. 158	Trinity Sunday	—   0 2	
8 W. 98		10 46   11 23		8 F. 128		11 32   —		8 M. 159		0 28   0 51	
9 Th. 99	Maundy Thursday	11 56   —		9 S. 129		0 1   0 27		9 Tu. 160		1 13   1 36	
10 F. 100	Good Friday	0 26   0 52		10 S. 130	4 after Easter	0 51   1 13		10 W. 161		1 56   2 16	
11 S. 101	Easter Even	1 14   1 38		11 M. 131		1 36   1 56		11 Th. 162	St. Barnabas, Ap. [Corpus Christi]	2 35   2 52	
12 S. 102	Easter Day	1 59   2 17		12 Tu. 132		2 15   2 33		12 F. 163		3 10   3 28	
13 M. 103	Easter Monday	2 37   2 56		13 W. 133		2 53   3 11		13 S. 164		3 46   4 4	
14 Tu. 104	Easter Tuesday	3 15   3 34		14 Th. 134		3 29   3 48		14 S. 165	1 after Trinity	4 22   4 39	
15 W. 105		3 52   4 11		15 F. 135		4 6   4 22		15 M. 166		4 56   5 13	
16 Th. 106		4 28   4 44		16 S. 136		4 41   4 58		16 Tu. 167		5 32   5 52	
17 F. 107		5 3   5 20		17 S. 137	Rogation Sunday	5 16   5 34		17 W. 168		6 13   6 35	
18 S. 108		5 40   6 1		18 M. 138	Rogation Day	5 56   6 17		18 Th. 169		6 58   7 25	
19 S. 109	1 after Easter. Low [Sunday]	6 23   6 48		19 Tu. 139	Rogation Day	6 42   7 8		19 F. 170		7 50   8 19	
20 M. 110		7 13   7 44		20 W. 140	Rogation Day	7 34   8 7		20 S. 171		8 51   9 28	
21 Tu. 111		8 17   8 55		21 Th. 141	Ascension Day	8 39   9 14		21 S. 172	2 after Trinity	10 0   10 34	
22 W. 112		9 35   10 13		22 F. 142		9 50   10 21		22 M. 173		11 4   11 34	
23 Th. 113	St. George	10 49   11 21		23 S. 143		10 54   11 24		23 Tu. 174		—   0 4	
24 F. 114		11 51   —		24 S. 144	after Ascension. Queen [Victoria born, 1819]	11 52   —		24 W. 175	St. John, Bapt.	0 30   0 55	
25 S. 115	St. Mark, Evan.	0 14   0 36		25 M. 145		0 15   0 37		25 Th. 176		1 21   1 47	
26 S. 116	2 after Easter	0 56   1 15		26 Tu. 146		1 0   1 22		26 F. 177		2 12   2 38	
27 M. 117		1 34   1 54		27 W. 147		1 45   2 8		27 S. 178		3 3   3 28	
28 Tu. 118		2 12   2 31		28 Th. 148		2 29   2 53		28 S. 179	3 after Trinity	3 52   4 18	
29 W. 119		2 49   3 11		29 F. 149		3 15   3 38		29 M. 180	St. Peter, Ap.	4 43   5 6	
30 Th. 120		3 31   3 52		30 S. 150		4 1   4 27		30 Tu. 181		5 31   5 58	
				31 S. 151	Whit Sun. Ember Wk.	4 52   5 16					

**CHRONOLOGICAL NOTES, 1903.**  
Golden Number 4 | Dominical Letter D  
Epact ... 2 | Roman Indiction 1  
Solar Cycle ... 8 | Julian Period 6616

**ECLIPSES.**  
Of the Sun, Two; of the Moon, Two.  
I. MARCH 28-29. Annular Eclipse of the Sun. Invisible in England. Line of Annular Eclipse passes over the North of China, Siberia and the Arctic. Visible as a Partial Eclipse in the N. E. of Russia; in Asia, east of a line from Ceylon to the Sea of Aral; in N. W. of North America and the Arctic.  
Eclipse Long. Lat.  
Begins... 11h 9m p.m., in 103° E. 15° N.  
Ends ... 4h 1m a.m., in 146° W. 51° N.  
At Hong Kong, begins 29th, 6h 51m a.m.; ends 9h 5m a.m. Local Time.

**ECLIPSES—contd.**  
II. APRIL 11-12. Partial Eclipse of Moon. Visible in England. Generally in Western Asia, in Europe, Africa, South America and the East of North America.  
Moon enters shadow 11th, 10h 34m p.m.  
" leaves " 12th, 1h 52m a.m.  
III. SEPTEMBER 21. Total Eclipse of the Sun. Invisible in England. Total Eclipse visible only in the South of the Indian and in the Antarctic Ocean. Partial Eclipse visible in the S. E. of Africa, the Indian and Antarctic Oceans, the South of Australia and New Zealand. In S. E. Africa the Sun rises eclipsed and in New Zealand sets eclipsed.  
Eclipse Long. Lat.  
Begins 2h 28m a.m., in 52° E., 18° S.  
Ends 6h 52m a.m., in 164° E., 54° S.

**ECLIPSES—contd.**  
At Perth (W. Australia), begins oh 25m p.m.; ends 1h 57m p.m. Standard Time, 8 hours E.  
IV. OCTOBER 6. Partial Eclipse of the Moon. Visible in the Western parts of America, the Pacific, Australia, Asia, Africa and Europe.  
Moon enters shadow ... 1h 40m p.m.  
" leaves " ... 4h 55m p.m.  
At Greenwich the Moon rises at 5h 32m in the Penumbra.  
**INDIAN GOVERNORS.**  
\*INDIA—Viceroy and Governor-General, The Rt. Hon. Lord Curzon, G.M.S.I., G.M.I.E. (Rs. 20,900).  
Madras—Governor—Lord Amptihill, G.C.I.E. (Rs. 10,000).  
\*Salaries are (excluding allowances) stated in Rupees per annum.



# CALENDAR FOR 1903.

JULY, 1903.			
SEVENTH MONTH—THIRTY-ONE DAYS.			
M. W. Y.	SUNDAYS, &c.	High Water at Lon. Bridge. A.M. P.M.	
1 W. 182		6 22	6 49
2 Th. 183		7 15	7 43
3 F. 184	[Independence	8 12	8 42
4 S. 185	Declaration of American	9 14	9 59
5 S. 186	4 after Trinity	10 24	10 59
6 M. 187		11 35	—
7 Tu. 188		0 5	0 30
8 W. 189		0 53	1 16
9 Th. 190		1 37	1 57
10 F. 191		2 15	2 34
11 S. 192		2 52	3 9
12 S. 193	5 after Trinity	3 27	3 44
13 M. 194		4 1	4 17
14 Tu. 195		4 36	4 52
15 W. 196		5 9	5 26
16 Th. 197		5 44	6 5
17 F. 198		6 20	6 47
18 S. 199		7 11	7 37
19 S. 200	6 after Trinity	8 5	8 37
20 M. 201		9 11	9 49
21 Tu. 202		10 27	11 1
22 W. 203		11 37	—
23 Th. 204		0 8	0 37
24 F. 205		1 4	1 32
25 S. 206	St. James, Ap.	1 59	2 23
26 S. 207	7 after Trinity	2 48	3 14
27 M. 208		3 38	4 2
28 Tu. 209		4 27	4 50
29 W. 210		5 12	5 35
30 Th. 211		5 58	6 20
31 F. 212		6 43	7 8

AUGUST, 1903.			
EIGHTH MONTH—THIRTY-ONE DAYS.			
M. W. Y.	SUNDAYS, &c.	High Water at Lon. Bridge. A.M. P.M.	
1 S. 213		7 34	8 1
2 S. 214	8 after Trinity	8 31	9 7
3 M. 215		9 45	10 23
4 Tu. 216		10 59	11 30
5 W. 217		—	0 7
6 Th. 218		0 35	0 58
7 F. 219		1 20	1 41
8 S. 220		1 59	2 16
9 S. 221	9 after Trinity	2 32	2 48
10 M. 222		3 4	3 20
11 Tu. 223		3 39	3 53
12 W. 224		4 10	4 25
13 Th. 225		4 44	4 59
14 F. 226		5 17	5 33
15 S. 227		5 52	6 14
16 S. 228	10 after Trinity	6 36	7 2
17 M. 229		7 29	7 59
18 Tu. 230		8 35	9 16
19 W. 231		9 58	10 38
20 Th. 232		11 16	11 54
21 F. 233		—	0 26
22 S. 234		0 52	1 20
23 S. 235	11 after Trinity	1 49	2 10
24 M. 236	St. Bartholomew, Ap.	2 35	2 59
25 Tu. 237		3 20	3 41
26 W. 238		4 5	4 27
27 Th. 239		4 48	5 7
28 F. 240		5 27	5 48
29 S. 241		6 8	6 31
30 S. 242	12 after Trinity	6 55	7 20
31 M. 243		7 49	8 21

SEPTEMBER, 1903.			
NINTH MONTH—THIRTY DAYS.			
M. W. Y.	SUNDAYS, &c.	High Water at Lon. Bridge. A.M. P.M.	
1 Tu. 244		8 58	9 42
2 W. 245		10 25	11 2
3 Th. 246		11 38	—
4 F. 247		0 8	0 33
5 S. 248		0 54	1 15
6 S. 249	13 after Trinity	1 35	1 52
7 M. 250		2 8	2 23
8 Tu. 251		2 38	2 53
9 W. 252		3 9	3 25
10 Th. 253		3 41	3 59
11 F. 254		4 15	4 33
12 S. 255		4 51	5 7
13 S. 256	14 after Trinity. Emb.	5 26	5 48
14 M. 257	[Week	6 11	6 35
15 Tu. 258		7 4	7 39
16 W. 259	Ember Day	8 15	8 57
17 Th. 260		9 40	10 26
18 F. 261	Ember Day	11 5	11 40
19 S. 262	Ember Day	—	0 13
20 S. 263	15 after Trinity	0 40	1 5
21 M. 264	St. Matthew, Ap.	1 31	1 52
22 Tu. 265	Jewish Year 5664 beg.	2 14	2 37
23 W. 266		2 57	3 18
24 Th. 267		3 37	3 58
25 F. 268		4 18	4 37
26 S. 269		4 56	5 16
27 S. 270	16 after Trinity	5 34	5 56
28 M. 271		6 18	6 42
29 Tu. 272	St. Michael & All	7 9	7 39
30 W. 273	[Angels	8 13	8 55

OCTOBER, 1903.			
TENTH MONTH—THIRTY-ONE DAYS.			
M. W. Y.	SUNDAYS, &c.	High Water at Lon. Bridge. A.M. P.M.	
1 Th. 274		9 41	10 21
2 F. 275		10 11	11 30
3 S. 276		11 59	—
4 S. 277	17 after Trinity	0 23	0 43
5 M. 278		1 2	1 20
6 Tu. 279		1 58	1 54
7 W. 280		2 10	2 26
8 Th. 281		2 42	2 57
9 F. 282		3 15	3 32
10 S. 283		3 50	4 8
11 S. 284	18 after Trinity	4 27	4 46
12 M. 285		5 6	5 29
13 Tu. 286		5 54	6 6
14 W. 287		6 50	7 22
15 Th. 288		8 2	8 43
16 F. 289		9 31	10 12
17 S. 290		10 51	11 27
18 S. 291	19 after Trinity. St.	11 56	—
19 M. 292	[Luke, Evan	0 23	0 48
20 Tu. 293		1 10	1 34
21 W. 294		1 55	2 14
22 Th. 295		2 34	2 55
23 F. 296		3 14	3 35
24 S. 297		3 52	4 11
25 S. 298	20 after Trinity	4 30	4 47
26 M. 299		5 5	5 24
27 Tu. 300		5 45	6 8
28 W. 301	SS. Simon & Jude, App.	6 34	6 59
29 Th. 302		7 30	8 5
30 F. 303		8 42	9 25
31 S. 304		10 6	10 39

NOVEMBER, 1903.			
ELEVENTH MONTH—THIRTY DAYS.			
M. W. Y.	SUNDAYS, &c.	High Water at Lon. Bridge. A.M. P.M.	
1 S. 305	21 after Trinity. All	11 12	11 40
2 M. 306	[Saints' Day	—	0 3
3 Tu. 307		0 24	0 43
4 W. 308		1 3	1 22
5 Th. 309		1 39	1 56
6 F. 310		2 15	2 32
7 S. 311		2 52	3 12
8 S. 312	22 after Trinity	3 31	3 50
9 M. 313	King Edward VII	4 12	4 33
10 Tu. 314	[born, 1841	4 55	5 19
11 W. 315		5 46	6 13
12 Th. 316		6 43	7 16
13 F. 317		7 59	8 28
14 S. 318		9 10	9 50
15 S. 319	23 after Trinity	10 27	11 2
16 M. 320		11 34	—
17 Tu. 321		0 5	0 27
18 W. 322		0 50	1 15
19 Th. 323		1 36	1 57
20 F. 324		2 16	2 55
21 S. 325	Ramadan (Turkish	2 54	3 13
	[Lent] begins		
22 S. 326	24 after Trinity	3 32	3 51
23 M. 327		4 9	4 26
24 Tu. 328		4 44	5 1
25 W. 329		5 21	5 41
26 Th. 330		6 4	6 26
27 F. 331		6 51	7 18
28 S. 332		7 48	8 20
29 S. 333	1 in Advent	8 56	9 33
30 M. 334	St. Andrew, Ap.	10 8	10 40

DECEMBER, 1903.			
TWELFTH MONTH—THIRTY-ONE DAYS.			
M. W. Y.	SUNDAYS, &c.	High Water at Lon. Bridge. A.M. P.M.	
1 Tu. 335	Queen Alexandra born, 1844	11 11	11 38
2 W. 336		—	0 3
3 Th. 337		0 25	0 46
4 F. 338		1 7	1 30
5 S. 339		1 51	2 11
6 S. 340	2 in Advent	2 31	2 54
7 M. 341		3 16	3 38
8 Tu. 342		4 2	4 27
9 W. 343		4 51	5 13
10 Th. 344		5 40	6 7
11 F. 345		6 35	7 4
12 S. 346		7 35	8 7
13 S. 347	3 in Advent. Emb. Wk.	8 42	9 19
14 M. 348		9 56	10 30
15 Tu. 349		11 3	11 35
16 W. 350	Ember Day	—	0 4
17 Th. 351		0 31	0 54
18 F. 352	Ember Day	1 19	1 41
19 S. 353	Ember Day	2 0	2 20
20 S. 354	4 in Advent	2 38	2 58
21 M. 355	St. Thomas, Ap.	3 16	3 34
22 Tu. 356		3 52	4 11
23 W. 357		4 27	4 45
24 Th. 358		5 2	5 19
25 F. 359	Christmas Day [Day	5 57	5 56
26 S. 360	St. Stephen, M. Boxing	6 16	6 38
27 S. 361	1 a. Christmas. St. John,	7 3	7 27
28 M. 362	Innocents' Day [Evan.	7 54	8 23
29 Tu. 363		8 57	9 34
30 W. 364		10 9	10 42
31 Th. 365		11 14	11 45

## INDIAN GOVERNORS—contd.

Bombay—Governor—Rt. Hon. Lord Northcote, G.C.L.E., C.B. (Rs. 10,000).  
 Bengal—Lieutenant-Governor—Sir John Woodburn, K.C.S.I. (Rs. 8,333).  
 Punjab—Lieut.-Governor—Sir C. M. Rivaz, K.C.S.I. (Rs. 8,333).  
 United Provinces of Agra and Oudh—Lieutenant-Governor—Sir J. D. La Touche, K.C.S.I. (Rs. 8,333).  
 Central Prov.—Chief Commissioner—(Rs. 4,166).  
 Burmah—Lieutenant-Governor—Sir F. W. Fryer, K.C.S.I. (Rs. 8,333).  
 Assam—Chief Commissioner—H. J. S. Cotton, C.S.I. (Rs. 4,166).

† New appointment pending at time of going to press.

## TIDAL CONSTANTS.

Note.—To find the approximate time of High Water at each of the following places for any day during 1903, add or subtract from the time of High Water at London Bridge given in the side column in the Calendar.

	A. M.
Bombay ... ..	sub. 2 18
Calcutta ... ..	add 0 2
Shanghai ... ..	sub. 0 23
Rangoon Town ... ..	add 2 47
... River Entrance ... ..	" 1 17
Hong Kong ... ..	sub. 4 58
Singapore ... ..	" 4 13
Goa ... ..	" 3 19
Point de Galle ... ..	add 0 2
Kurrachee ... ..	sub. 3 28
Madras ... ..	" 5 23
Port Natal ... ..	add 2 32

## TIDAL CONSTANTS—contd.

	A. M.
Malta ... ..	add 1 32
Gibraltar ... ..	sub. 0 11
Table Bay ... ..	add 0 48
Port Elizabeth ... ..	" 1 25
Yokohama ... ..	" 4 2
Penang ... ..	sub. 1 56
Valparaiso ... ..	" 4 28
Buenos Ayres ... ..	add 4 2
Monte Video ... ..	" 0 32

EXAMPLES.—Required the time of afternoon High Water at Calcutta and Singapore on June 1st, 1903.

Time of afternoon High Water in Calendar is 6h 10m; the time at Calcutta is 0h 2m added to 6h 10m=6h 12m; and time at Singapore is 4h 13m subtracted from 6h 10m=1h 57m.



## GENERAL INFORMATION, &c.

### THE ROYAL FAMILY.

<i>Date of Birth and Age in 1903.</i>		
King Edward VII.	Nov. 9, 1841	62
Queen Alexandra	Dec. 1, 1844	59
Prince of Wales	June 3, 1865	38
<i>(Married July 6, 1893, to Princess Victoria Mary of Teck, born May 26, 1867.)</i>		
<i>Issue—</i>		
Edward Albert	June 23, 1894	9
Albert Frederick	Dec. 14, 1895	8
Victoria Alexandra	April 25, 1897	6
Henry William	March 31, 1900	3
Princess Louise Victoria	Feb. 20, 1867	36
<i>(Married July 27, 1889, to the Duke of Fife), 2 children.</i>		
Princess Victoria	July 6, 1868	35
Princess Maud Charlotte	Nov. 26, 1869	34
<i>(Married July 22, 1896, to Prince Charles of Denmark.)</i>		
Princess Helena	May 25, 1846	57
Princess Louise	March 18, 1848	55
Duke of Connaught	May 1, 1850	53
Princess Beatrice	April 14, 1857	46

### THE BRITISH EMPIRE.

#### COLONIAL GOVERNORS.

##### AUSTRALASIAN.

GOVERNOR-GEN. OF THE COMMONWEALTH OF AUSTRALIA—†  
 BRITISH NEW GUINEA—G. Ruthven Le Hunte, C.M.G. (£1,500).  
 FIJI ISLANDS AND WESTERN PACIFIC—Sir Henry M. Jackson, K.C.M.G. (£2,700).  
 NEW SOUTH WALES—Vice-Admiral Sir H. H. Rawson, K.C.B. (£5,000).  
 NEW ZEALAND—The Rt. Hon. Earl of Ranfurly, G.C.M.G. (£5,000).  
 QUEENSLAND—Major-Gen. Sir H. C. Chermiside, R.E., G.C.M.G., C.B. (£5,000).  
 SOUTH AUSTRALIA—The Rt. Hon. Lord Tennyson, K.C.M.G. (£4,000).  
 TASMANIA—Sir A. E. Havelock, G.C.S.I., G.C.M.G., G.C.I.E. (£3,500).  
 VICTORIA—Sir George Sydenham Clarke, K.C.M.G. (£5,000).  
 WESTERN AUSTRALIA—† (£4,000).

##### AFRICAN.

HIGH COMMISSIONER FOR SOUTH AFRICA AND ADMINISTRATOR OF THE TRANSVAAL AND ORANGE RIVER COLONY—Viscount Milner, G.C.B., G.C.M.G. (£3,000 and £8,000).  
 CAPE OF GOOD HOPE—The Hon. Sir W. F. Hely-Hutchinson, G.C.M.G. (£8,000).  
 TRANSVAAL—Lieut.-Governor—The Hon. Sir A. Lawley, K.C.M.G.  
 ORANGE RIVER COLONY—Deputy Administrator—Major H. J. Goold-Adams, C.B., C.M.G. (£3,500).  
 BECHUANALAND PROTECTORATE—R. C. Williams, Esq., C.M.G. (£1,000).  
 BASUTOLAND—H. C. Sloley, Esq. (£1,500).  
 NATAL—Col. Sir H. E. McCallum, K.C.M.G. (£5,000).  
 ST. HELENA—R. A. Sternedale (£500).  
 SIERRA LEONE—Sir C. A. King-Harman, K.C.M.G. (£2,000).  
 GAMBIA—Sir G. C. Denton, K.C.M.G.  
 GOLD COAST—Major M. Nathan, R.E., C.M.G. (£3,000).  
 LAGOS—Sir W. MacGregor, M.D., K.C.M.G., C.B. (£2,500).  
 N. NIGERIA—Brig.-Gen. Sir F. J. D. Lugard, K.C.M.G., C.B., (£2,500).  
 S. NIGERIA—Sir R. D. Rayment Moor, K.C.M.G. (£2,500).

##### NORTH AMERICAN.

CANADA—The Rt. Hon. The Earl of Minto, G.C.M.G. (\$50,000).  
 PROVINCES OF CANADA:—  
 ONTARIO—The Hon. Sir Oliver Mowat, G.C.M.G. (\$10,000).  
 QUEBEC—Sir L. A. Jetté, K.C.M.G. (\$10,000).  
 NOVA SCOTIA—The Hon. A. G. Jones, Esq. (\$9,000).  
 NEW BRUNSWICK—A. R. McClellan.  
 MANITOBA—D. H. McMillan, Esq. (\$10,000).  
 BRITISH COLUMBIA—The Hon. Sir H. G. J. de Lotbinière, K.C.M.G. (\$9,000).

† New appointments pending at time of going to press.

### THE BRITISH EMPIRE—contd.

PRINCE EDWARD ISLAND—P. A. McIntyre, Esq., M.D. (\$7,000).  
 NORTH-WEST TERRITORIES—A. E. Forget, Esq. (\$7,000).  
 NEWFOUNDLAND—Sir Cavendish Boyle, K.C.M.G. (\$10,000).

#### WEST INDIAN.

JAMAICA—Sir A. W. L. Hemming, G.C.M.G. (£5,000).  
 BRITISH HONDURAS—Sir D. Wilson, K.C.M.G. (\$8,748).  
 BRITISH GUIANA—Sir J. A. Swettenham, K.C.M.G. (£5,000).  
 BAHAMA ISLANDS—Sir Gilbert T. Carter, K.C.M.G. (£2,000).  
 TRINIDAD AND TOBAGO—Sir C. A. Moloney, K.C.M.G. (£5,000).  
 BARBADOS—Sir F. M. Hodgson, K.C.M.G. (£2,500).

#### Windward Islands:—

GRENADA—Sir R. B. Llewellyn, K.C.M.G. (£2,500).  
 ST. VINCENT—E. J. Cameron, Esq. (£800).  
 ST. LUCIA—Sir H. L. Thompson, K.C.M.G. (£800).

#### Leeward Islands:—

ANTIGUA—Sir G. Strickland, K.C.M.G. (£2,600).  
 ST. CHRISTOPHER NEVIS—C. T. Cox (£900).  
 DOMINICA—H. H. J. Bell (£900).  
 MONTserrat—F. H. Watkins (£400).  
 VIRGIN ISLANDS—N. G. Cookman, (£250).  
 BERMUDA ISLANDS—Lieut.-Gen. Sir H. Le Guay Geary, K.C.B. (£2,946).

#### MEDITERRANEAN.

GIBRALTAR—Gen. Sir George White, V.C., G.C.B., G.C.S.I., G.C.I.E., G.C.M.G., G.C.V.O. (£5,000).  
 MALTA—Lord Grenfell, G.C.M.G., G.C.B. (£5,000).  
 CYPRUS—Sir W. F. Haynes Smith, K.C.M.G. (£3,000).

#### EASTERN.

CEYLON—The Rt. Hon. Sir J. West Ridgeway, G.C.M.G., K.C.B., K.C.S.I. (Rs. 80,000).  
 HONG KONG—Sir H. A. Blake, G.C.M.G. (£5,000).  
 MAURITIUS—Sir Charles Bruce, G.C.M.G. (£5,000).  
 SEYCHELLES ISLANDS—E. B. Sweet-Escott, C.M.G. (Rs. 12,500).  
 STRAITS SETTLEMENTS—Sir F. Swettenham, K.C.M.G. (£5,000).  
 LABUAN—E. W. Birch, Esq., C.M.G.  
 WEI-HAI-WEI—J. H. S. Lockhart, C.M.G. (£1,150).

#### MISCELLANEOUS.

FALKLAND ISLANDS—W. Grey-Wilson, C.M.G. (£1,200).  
 JERSEY—Lieut.-Gov.—Major-Gen. H. R. Abadie, C.B. (£1,700).  
 GUERNSEY—Lieut.-Gen. N. Stevenson (£1,700).  
 ISLE OF MAN—† £1,800.

#### QUARTER DAYS.

<i>English.</i>		<i>Scottish.</i>	
Lady Day	Mar. 25	Candlemas	Feb. 2
Midsummer	June 24	Whitsunday	May 15
Michaelmas	Sept. 29	Lammas	Aug. 1
Christmas	Dec. 25	Martinmas	Nov. 11

*Half-Quarter Days.*  
 Feb. 8, May 9, Aug. 11 and Nov. 11.

#### THE CALENDARS.

The Jewish is in accordance with the system arranged A.D. 358. The Calendar dates from the Creation, which is fixed as 3760 years and 3 months before the beginning of the Christian Era; the year is Luni-solar.

The Mohammedan, or era of the Hejira, dates from the day after Mahomet's flight from Mecca, which occurred on the night of July 15, 622 A.D. The months are Lunar.

The Fasli year was derived from a combination of the Hejira and Samvat years by the order of Akbar; it is Luni-

### THE CALENDARS—contd.

solar. The Bengali year seems also to have been related at one time to the Hejira, but the fact of its being Solar made it lose 11 days each year.

The Samvat era dates from 57 B.C., and is Luni-solar. The months are divided into two fortnights—*sudi* or bright and *badi* or dark. Each fortnight contains 15 tithis, which furnish the dates of the civil days given in our calendars.

#### JEWISH CALENDAR.

The Year 5663 commenced Oct. 2nd, 1902.

1903.		5663.	
Jan. 1	...	Tebet	2
" 9	Fast, Siege of Jeru.	"	10
" 29	...	Sebat	1
Feb. 28	...	Adar	1
Mar. 12	Fast of Esther	"	13
" 13	Purim	"	14
" 14	Shushan Purim	"	15
" 29	...	Nisan	1
April 12	Fest. of Passover	"	15
" 13	" " 2nd Day	"	16
" 18	" " 7th	"	21
" 19	" " 8th	"	22
" 28	...	Yiar	1
May 15	Fest. 33rd of Omer	"	18
" 27	...	Sivan	1
June 1	Pentecost, 1st Day	"	6
" 2	" " 2nd	"	7
" 26	...	Tamuz	1
July 12	Fast of Tamuz	"	17
" 25	...	Ab	1
Aug. 2	Fast of Ab	"	9
" 24	...	Elul	1
Sept. 22	New Year 5664	Tisri	1
" 23	" " 2nd Day	"	2
" 24	Fast of Gedaliah	"	3
Oct. 1	Day of Atonement	"	10
" 6	Feast of Tabernacles	"	15
" 7	" " 2nd Day	"	16
" 12	Hosana Raba	"	21
" 13	Feast of the 8th Day	"	22
" 14	Rejoicing of the Law	"	23
" 22	...	Hesvan	1
Nov. 20	...	Kislev	1
Dec. 14	Dedication of Temple	"	25
" 20	...	Tebet	1
" 29	Fast, Siege of Jeru.	"	10

#### MOHAMMEDAN CALENDAR.

January		1903 ... 1320		Shawall	
"	30	...	...	Dulkaada	1
March	1	...	...	Dulheggia	1
"	30	...	1521	Muharram	1
April	29	...	...	Saphar	1
May	28	...	...	Rabia I.	1
June	27	...	...	Rabia II.	1
July	26	...	...	Jomada I.	1
August	25	...	...	Jomada II.	1
September	23	...	...	Rajab	1
October	23	...	...	Shaaban	1
November	21	...	...	Ramadan	1
December	21	...	...	Shawall	1

#### FASLI (N. W. INDIA.)

January		1903 ... 1310		Pous	
"	14	...	...	Magha	1
February	13	...	...	Phalguna	1
March	14	...	...	Chaitra	1
April	12	...	...	Vaisakha	1
May	12	...	...	Jyaistha	1
June	11	...	...	Ashada	1
July	10	...	...	Sravana	1
August	9	...	...	Bhadra	1
September	7	...	1311	Asvina	1
October	7	...	...	Karttika	1
November	6	...	...	Margha	1
December	5	...	...	Pous	1

#### BENGALI.

January		1903 ... 1309		Pous	
"	15	...	...	Magha	1
February	13	...	...	Phalguna	1
March	15	...	...	Chaitra	1
April	14	...	1310	Vaisakha	1
May	15	...	...	Jyaistha	1
June	16	...	...	Ashada	1
July	17	...	...	Sravana	1
August	18	...	...	Bhadra	1
September	18	...	...	Asvina	1
October	18	...	...	Karttika	1
November	17	...	...	Margha	1
December	16	...	...	Pous	1



SAMVAT CALENDAR FOR 1903.

*Note.*—The Calendar is computed for Lanka, the month being inserted only to *sudi*, so that for places where *badi* precedes, it may be written in. All tithis are the same at Calcutta, Madras and Bombay, except those followed by initial letter of the place. B signifies that 1 is to be added to the tithi in table to obtain that for Bombay; a, m, or b 1 to be subtracted from the table to obtain that for Calcutta, Madras or Bombay respectively.

POUNDS STERLING.  
For values of Rupees from 1s. 3½d. to 1s. 3¾d.

[illegible]

For values of Rupees from 1s. 4 $\frac{1}{2}$ d. to 1s. 4 $\frac{3}{4}$ d.

For values of Rupees from 1s. 3½d. to 1s. 3¾d.

For values of Rupees from 1s. 3½d. to 1s. 4½d.												
Sterling.	at 1s. 3½d.			at 1s. 3¾d.			at 1s. 4d.			at 1s. 4¼d.		
£. s. d.	Rs.	A.	P.	Rs.	A.	P.	Rs.	A.	P.	Rs.	A.	P.
0 0 0	0	1	0	0	1	0	0	1	0	0	11	0
0 0 1	0	1	1	0	1	1	0	1	1	0	11	1
0 0 4	0	1	4	0	1	4	0	1	4	0	11	4
0 0 6	0	1	6	0	1	6	0	1	6	0	11	6
0 0 9	0	1	9	0	1	9	0	1	9	0	11	9
0 1 0	0	12	1	0	12	0	0	12	0	0	11	1
0 2 6	1	14	2	1	14	1	1	14	0	1	13	10
0 3 0	1	14	5	1	14	3	1	13	3	1	13	4
0 5 0	1	15	7	1	15	5	1	15	3	3	9	9
0 10 0	7	8	11	7	8	5	7	8	0	7	7	7
1 0 0	15	1	10	15	0	11	15	0	5	14	15	0
1 0 5	25	9	5	25	4	7	25	2	4	74	13	7
1 0 10	25	12	10	25	7	4	25	5	0	14	11	1
1 0 15	37	7	5	37	10	2	37	8	0	27	8	0
1 0 20	45	8	11	45	12	2	45	14	1	37	8	1
1 0 25	55	14	5	55	15	0	55	17	5	44	11	4
1 0 30	61	13	13	61	12	9	61	12	9	49	11	4
1 0 35	68	10	10	68	10	10	68	10	10	56	8	8
1 0 40	75	7	7	75	7	7	75	7	7	63	5	5
1 0 45	82	4	4	82	4	4	82	4	4	70	2	2
1 1 0	89	1	1	89	1	1	89	1	1	77	0	0
1 1 5	96	8	8	96	8	8	96	8	8	84	7	7
1 1 10	103	5	5	103	5	5	103	5	5	91	4	4
1 1 15	110	2	2	110	2	2	110	2	2	98	1	1
1 1 20	117	9	9	117	9	9	117	9	9	105	8	8
1 1 25	124	6	6	124	6	6	124	6	6	112	5	5
1 1 30	131	3	3	131	3	3	131	3	3	119	2	2
1 1 35	138	0	0	138	0	0	138	0	0	126	9	9
1 1 40	145	7	7	145	7	7	145	7	7	133	6	6
1 1 45	152	4	4	152	4	4	152	4	4	140	3	3
1 2 0	159	1	1	159	1	1	159	1	1	147	0	0
1 2 5	166	8	8	166	8	8	166	8	8	154	7	7
1 2 10	173	5	5	173	5	5	173	5	5	161	4	4
1 2 15	180	2	2	180	2	2	180	2	2	168	1	1
1 2 20	187	9	9	187	9	9	187	9	9	175	8	8
1 2 25	194	6	6	194	6	6	194	6	6	182	5	5
1 2 30	201	3	3	201	3	3	201	3	3	189	2	2
1 2 35	208	0	0	208	0	0	208	0	0	196	9	9
1 2 40	215	7	7	215	7	7	215	7	7	203	6	6
1 2 45	222	4	4	222	4	4	222	4	4	210	3	3
1 3 0	229	1	1	229	1	1	229	1	1			

For values of Rupees from 1s. 4 $\frac{1}{2}$ d. to 1s. 4 $\frac{1}{4}$ d.

Sterling.	at rs. 4½ d.	at rs. 4½ d.	at rs. 4½ d.	at rs. 4½ d.	at rs. 4½ d.	at rs. 4½ d.
£ s. d.	R. s. P.	R. s. P.	R. s. P.	R. s. P.	R. s. P.	R. s. P.
0 0 1	0 0 11	0 0 11	0 0 11	0 0 11	0 0 11	0 0 11
0 0 4	0 3 11	0 3 11	0 3 11	0 3 11	0 3 11	0 3 11
0 0 6	0 5 11	0 5 11	0 5 11	0 5 11	0 5 11	0 5 11
0 0 9	0 8 11	0 8 11	0 8 10	0 8 10	0 8 10	0 8 10
0 1 0	0 11 11	0 11 10	0 11 10	0 11 10	0 11 10	0 11 10
0 2 6	1 13 9	1 13 8	1 13 7	1 13 7	1 13 7	1 13 7
0 5 6	3 11 7	3 11 6	3 11 5	3 11 5	3 11 5	3 11 5
1 0 0	5 9 9	5 9 8	5 9 7	5 9 7	5 9 7	5 9 7
1 0 0	7 3 7	7 3 6	7 3 6	7 3 6	7 3 6	7 3 6
1 1 0	14 14 7	14 14 1	14 13 8	14 13 7	14 13 7	14 13 7
5 0 0	74 9 0	74 6 8	74 4 4	74 2 2	73 5 9	73 3 3
10 0 0	149 2 0	148 13 4	148 8 9	148 4 2	147 5 7	147 11 1
25 0 0	372 13 3	372 1 5	371 5 10	370 10 5	369 15 5	369 3 3
50 0 0	447 6 0	446 8 2	445 10 4	444 12 7	443 14 10	443 1 1
100 0 0	845 10 0	844 16 4	843 17 11	842 18 5	841 19 14	841 7 7
500 0 0	4118 7 11	4117 10 10	4116 12 10	4115 14 10	4114 16 10	4113 18 11
1000 0 0	8141 14 1	8140 21 1	8139 22 10	8138 24 10	8137 26 10	8136 28 11



## GENERAL INFORMATION, &c.

### INDIAN INLAND POSTAGE RATES.

**Post Cards.**—Single,  $\frac{1}{2}$  anna; reply,  $\frac{1}{2}$  anna. **Letters.**—Not exc.  $\frac{3}{4}$  tola,  $\frac{1}{2}$  anna; exc.  $\frac{3}{4}$  tola but not exc.  $1\frac{1}{4}$  tola, 1 anna; for every add.  $1\frac{1}{4}$  tola or fraction, 1 anna. **Packets, Publications of all kinds, Newspapers, Books and Patterns.**—Not exc. 10 tolas,  $\frac{1}{2}$  anna; for every add. 10 tolas or fraction,  $\frac{1}{2}$  anna. **Registered Newspapers.**—Not exc. 4 tolas,  $\frac{1}{2}$  anna; not exc. 20 tolas,  $\frac{1}{2}$  anna; for every add. 20 tolas or fraction,  $\frac{1}{2}$  anna. **Parcels.**—Not exc. 20 tolas, 2 annas; exc. 20 tolas but not exc. 40 tolas, 4 annas; for every add. 40 tolas or fraction up to 440 tolas, 2 annas. Exceeding 440 tolas but not exc. 480 tolas, 3 rupees; for every add. 40 tolas or fraction, 4 annas. Parcels weighing more than 440 tolas, and not more than 25 seers (2,000 tolas), limit of weight, must be registered.

**Commission on Ordinary Inland Money Orders.**—On any sum not exc. 5 rupees, 1 anna; exc. 5 rupees, but not exc. 10 rupees, 2 annas; exc. 10 rupees but not exc. 25 rupees, 4 annas; exc. 25 rupees, 4 annas for each complete sum of 25 rupees, and 4 annas for the remainder; provided that, if the remainder does not exc. 10 rupees, the charge for it is only 2 annas. The value of a single Money Order may not exc. 600 rupees.

**Telegraphic Money Orders, Inland.**—On any sum not exc. 25 rupees, the fee is, 1 rupee 4 annas. On every additional 25 rupees (or fraction) up to 150 rupees, 4 annas. On every additional 50 rupees (or fraction) above 150 rupees and up to 600 rupees, 8 annas; including cost of telegram.

**Money Orders expressed in Indian currency** may be drawn on—British East Africa Protectorate, British North Borneo and Labuan, Ceylon, Corea (certain places), Formosa (certain places), German East Africa, Hong Kong (British Offices), Japan, Japanese Agencies in China, Mauritius, Sarawak, Seychelles, Straits Settlements, Zanzibar, Portuguese India (*Goa and Daman*), Chamba State, Gwalior State, Jhind State, Nabha State, Patiala State.

Limit of value, 150 rupees. Inland rates of commission apply to these Orders.

Telegraphic Money Orders expressed in Indian currency may also be drawn on Ceylon. Limit of value is 150 rupees. The rates of commission are 4 annas higher in each case than the rates applicable to Inland Telegraphic Money Orders, except as regards sums not exc. 10 rupees, on which the commission is 1 rupee 6 annas.

**Registration Fee.**—For each Letter, Post Card, Book or Pattern Packet, or Parcel to be registered, 2 annas.

**Acknowledgment Charge.**—1 anna (*in stamps* for registered articles, and *cash* for ordinary registered parcels).

**Insurance.**—Registered letters, value-payable registered letters, registered parcels and value-payable registered parcels may be insured up to the value of 500 rupees, in branch offices, and up to 2,000 rupees in other offices; when the value insured does not exceed 50 rupees, 2 annas; 100 rupees, 4 annas; every add. 100 rupees, or fraction thereof, 4 annas.

**Value-Payable.**—FEES.—On any sum specified for recovery.—The same rates of commission as for ordinary Inland Money Orders.

### FOREIGN POSTAGE RATES.

**Post Cards.**—Single, 1 anna; reply, 2 annas. **Printed Papers** (including newspapers and books).—Each packet, per 2 oz.,  $\frac{1}{2}$  anna. **Business Papers** (Legal and Commercial Documents).—Each packet, not exc. 10 oz.,  $2\frac{1}{2}$  annas; per 2 oz. add.,  $\frac{1}{2}$  anna. **Samples.**—Each packet, not exc. 4 oz., 1 anna; per 2 oz. add.,  $\frac{1}{2}$  anna. (Limit, 12 oz.)

The postage on **Letters** for the United Kingdom and the British Possessions in the following list is 1 anna for each half ounce or part of that weight:—Ascension, Bahamas, Barbadoes, Bermuda, British Central Africa Protectorate, British East Africa Protectorate, British Guiana, British Honduras, British North Borneo, Canada, Cape Colony, Cayman Islands, Cyprus, Falkland Islands, Fiji, Gambia, Gibraltar, Gold Coast Colony, Hong Kong (with agencies at Shanghai, Liu Kung Tau, Hankow, Ningpo, Foochow, Amoy, Swatow, Canton and Hoihow), Jamaica, Johore, Labuan, Lagos, Leeward Islands (*vis.*, Antigua, Dominica, Montserrat, Nevis, St. Kitts and Virgin Islands), Malta, Mauritius, Natal, Newfoundland, New Zealand (including Cook or Hervey Islands), Nigeria (Northern, Nigeria (Southern), Orange River Colony, Protected Malay States of Negri Sembilan, Pahang, Perak and Selangor; Sarawak, St. Helena, Seychelles, Sierra Leone, Straits Settlements, Tobago, Transvaal, Trinidad, Turks' Islands, Uganda, Windward Islands (*vis.*, Grenada, the Grenadines, St. Lucia and St. Vincent), Zanzibar.

All other countries  $2\frac{1}{2}$  annas for each  $\frac{1}{2}$  oz. or part of that weight. **Note.**—Indian Inland Rates are, however, charged to Ceylon and Portuguese India, also Aden, French possessions in India, and Indian post offices in Turkish Arabia and Persian Gulf.

**Foreign Parcel Post.**—Parcels can be sent to most parts of the world. Particulars will be found in the Indian Postal Guide. Parcels must be securely fastened and must be accompanied by a Customs Declaration, obtainable free, stating its contents and value. Parcels for United Kingdom are divided into two classes; (1) Not exc. 11 lbs. in weight, which are sent as mails to the British Post Office; and (2) exc. 11 lbs., but not exc. 50 lbs., which are forwarded by the P. & O. Company. (39 tolas=1 lb. for foreign parcels.)

#### Rates by British Post Office.

For a parcel		Via Gibraltar		Overland	
		Rs. A.	P.	Rs. A.	P.
Not exc. 1 lb. ..	..	0	12	2	4
Exc. 1 lb., but not exc. 2 lbs. ..	..	1	4	2	4
" 2 " " 3 " ..	..	1	12	2	4
" 3 " " 7 " ..	..	2	10	3	6
" 7 " " 11 " ..	..	3	12	4	8

### FOREIGN POSTAGE RATES—contd.

#### Rates by P. & O. Co.

For each lb. or fraction of a lb. (up to 50 lbs.) ... 8 annas  
Limits of size:—6 ft. in girth and length combined, or  $3\frac{1}{2}$  ft. in length.

**Money Order Commission.**—For a Sterling Money Order not exc. £2, 6 annas; £5, 12 annas; £7, 1 rupee 2 annas; £10, 1 rupee 8 annas; £12, 1 rupee 14 annas; £15, 2 rupees 4 annas; £17, 2 rupees 10 annas; £20, 3 rupees. The maximum amount of a single order to the United Kingdom is £10.

### TELEGRAPH RATES.

#### (1) Telegrams to Europe.

To United Kingdom and Europe generally, except Russia and Turkey. All words in addresses, except the name of the office from which a telegram is sent, are counted when computing the charges:—From any office in India or Burma, *via* Suez or Teheran, per word, 1 rupee, 14 annas; from any office in India, *via* Turkey, per word, 2 rupees, 11 annas.

#### (2) Approximate Tariff of Charges per Word for Foreign Messages.

(Subject to variation through exchange.)

The charges given are from Offices in India. From Offices in Burmah, add 2 annas a word.

	Rs. As.		Rs. As.
ASIA, East of India—		Sierra Leone } <i>via</i> Bombay & Zanzibar	5 15
Amoy, Foochow } <i>via</i> Madras	1 13	Aden	2 13
Shanghai, Hong Kong } Canton, Macao,		Br. E. Africa, " "	3 1
Wampoo " "	2 0	NORTH AMERICA—	
Kansu, Pekin, Kirin " "	2 9	Canada } <i>via</i> Teheran or Suez	3 12
Japan " "	3 7	British Columbia " "	4 3
ASIA, other places—		New York State " "	3 12
Aden and Perim } <i>via</i> Bombay	2 1	United States " "	3 12
Russia, Asiatic, } all places " "	3 5		10
Turkey in Asia " "	3 5	SOUTH AMERICA—	
Cyprus " "	2 8	Argentine Republic, } <i>via</i> Teheran	6 2
AFRICA and Islands—		Paraguay, Uruguay } or Suez	
Cape Colony, Natal, } <i>via</i> Bombay	3 9	British Guiana " "	13 12
Orange River Col. } <i>via</i> Aden	3 9	Brazil " "	0 0
Offices of B.S. Africa Co.:—		Bolivia, Chili " "	7 0
Southern Rhodesia " "	3 14	AUSTRALIA—	
Northern Rhodesia " "	4 1	New South Wales } <i>via</i> Madras	3 12
Egypt—Alexandria } <i>via</i> Suez	2 8	Queensland " "	3 13
Madeira " "	3 6	South & West Australia " "	3 10
Mauritius } <i>via</i> Bombay & Aden	3 9	Victoria " "	3 11
Mombassa " "	2 13	Tasmania " "	4 1
		New Zealand " "	3 14

#### (3) Inland Telegrams between any two stations in India and Burma.

No charge for the address and sender's name.

Class of Message	First 8 words or groups of 5 figures.	Each add. word or group of 5 figures.
	Rs. As.	Rs. As.
1 DEFERRED .. ..	0 8	0 1
2 ORDINARY .. ..	1 0	0 2
3 URGENT .. ..	2 0	0 4

A Reply to a Telegram may be prepaid by the sender up to a maximum of 2 rupees. 1 *Deferred* Telegrams are sent when the lines are clear of *Urgent* and *Ordinary* Telegrams, and are delivered between daybreak and 9 p.m. (local time). 2 *Ordinary* Telegrams are sent after *Urgent* Telegrams, and are delivered between daybreak and 9 p.m. (local time). 3 *Urgent* Telegrams receive instant transmission, and in cases of emergency can be sent from any office at any time.

**Telegrams to Ceylon.**—From any office in India, per word, 3 annas; from any office in Burma, per word, 4 annas 6 pie.

### INDIAN MONEY TABLE.

3 Pie .. ..	... make 1 Pice
12 Pie or 4 Pice .. ..	... " 1 Anna
192 Pie, or 64 Pice, or 16 Annas .. ..	... " 1 Rupee
16 Rupees (Silver) .. ..	... " 1 Mohur (Gold)
100,000 " .. ..	... " 1 Lakh or Lac

### INDIAN WEIGHTS.

1 Tola .. ..	... = 61 $\frac{1}{2}$ drachms avoirdupois
5 Tolas .. ..	= 1 Chittack ... = 2 $\frac{1}{2}$ ounces
16 Chittacks .. ..	= 1 Seer ... = 2 $\frac{1}{2}$ pounds
40 Seers .. ..	= 1 Mun (Maunder) ... = 82 $\frac{1}{2}$ pounds
27.222 (nearly 27 $\frac{1}{2}$ Maunders) .. ..	= 1 ton

Lineal measures vary throughout India; in Bengal  $3\frac{1}{2}$  Beegahs go to an acre.

### INTEREST TABLE.

FROM 5 TO 12 PER CENT. ON RUPEES 100.  
Calculated for 1 Year, 1 Month (Calendar), 1 Week, and 1 Day (365 Days to Year), the Decimal Fraction of a Pie for the Day being shown for the Day.

Per cent.	1 Day.	1 Week.	1 Month.	1 Year.
	RS. A. P.	RS. A. P.	RS. A. P.	RS. A. P.
5	0 0 2'630	0 1 6	0 6 8	5 0 0
6	0 0 3'150	0 1 10	0 8 0	6 0 0
7	0 0 3'682	0 2 1	0 9 4	7 0 0
8	0 0 4'203	0 2 5	1 0 8	8 0 0
9	0 0 4'734	0 2 9	1 1 2	9 0 0
10	0 0 5'265	0 3 0	1 2 4	10 0 0
11	0 0 5'786	0 3 4	1 3 8	11 0 0
12	0 0 6'312	0 3 8	1 5 0	12 0 0



# GENERAL INFORMATION, &c.

## INDIAN STAMP DUTIES.

	Rs. A.
<i>Acknowledgment of Debtx.</i> Rs. 20	0 1
<i>Affidavit or Declaration</i> ...	1 0
<i>Agreement or Memo. of Agreement</i> , if relating to sale of a Government security, or share in an incor- porated company or other body corporate, or Bill of Exchange	0 1
In any other case ...	0 8
<i>Appointment in execution of a power</i> ...	15 0
<i>Articles of Association of Company</i>	25 0
<i>Articles of Clerkship</i> ...	250 0
<i>Award</i> , any decision in writing by an Arbitrator, other than by an Order of the Court. Where the value does not exceed Rs. 1,000, same duty as a Bond.	
In any other case ...	5 0
<i>Bill of Exchange or Promissory Note payable on demand</i> ...	0 1
Where payable otherwise than on demand, but not more than one year after date or sight.	
Not exc. Rs. 200, a. 2; exc. Rs. 200, not exc. Rs. 400, a. 4; exc. Rs. 400, not exc. Rs. 600, a. 6; exc. Rs. 600, not exc. Rs. 1,000, a. 10; exc. Rs. 1,000, not exc. Rs. 1,200, a. 12; exc. Rs. 1,200, not exc. Rs. 1,600, Rs. 1; exc. Rs. 1,600, not exc. Rs. 2,500, a. 8; exc. Rs. 2,500, not exc. Rs. 5,000, Rs. 3; exc. Rs. 5,000, not exc. Rs. 7,500, Rs. 4, a. 8; exc. Rs. 7,500, not exc. Rs. 10,000, Rs. 6; exc. Rs. 10,000, not exc. Rs. 15,000, Rs. 9; exc. Rs. 15,000, not exc. Rs. 20,000, Rs. 12; exc. Rs. 20,000, not exc. Rs. 25,000, Rs. 15; exc. Rs. 25,000, not exc. Rs. 30,000, Rs. 18; and for every add. Rs. 10,000, or part thereof, in excess of Rs. 30,000, Rs. 6.	
Where payable at more than one year after date or sight, same duty as a Bond.	
<i>Bill of Lading</i> ...	0 4
<i>Bond</i> (not otherwise provided for)— Not exc. Rs. 10 ...	0 2
Exc. Rs. 10, but not exc. Rs. 50	0 4
Exc. Rs. 50, but not exc. Rs. 100	0 8
Up to Rs. 1,000, every Rs. 100	0 8
For ev. Rs. 500 beyond Rs. 1,000	2 8
<i>Bond, Administration, Customs, Security or Mortgage Deed</i> —For amount not exceeding Rs. 1,000, same duty as a Bond.	
In any other case ...	5 0
<i>Cancellation</i> ...	5 0
<i>Certificate or other Document re- lating to Shares</i> ...	0 1
<i>Charter Party</i> ...	1 0
<i>Cheque</i> ...	0 1
<i>Composition—Deed</i> ...	10 0
<i>Conveyance</i> , not being a Transfer— Not exceeding Rs. 50 ...	0 8
Exceeding Rs. 50, not exceeding Rs. 100 ...	1 0
For every Rs. 100 in excess of Rs. 100 up to Rs. 1,000 ...	1 0
Forevery Rs. 500, or part thereof, in excess of Rs. 1,000 ...	5 0
<i>Copy or Extract</i> , if the original was not chargeable with duty, or if duty with which it was charge- able does not exceed 1 Rupee	0 8
In any other case ...	1 0
<i>Delivery Order</i> ...	0 1
<i>Entry in any High Court of an Advocate or Vakil</i> ...	500 0
In the case of an Attorney ...	250 0
<i>Instrument</i> — <i>Apprenticeship</i> ...	5 0
<i>Divorce</i> ...	1 0
Other than Will, conferring or purporting to confer Authority to adopt ...	10 0
<i>Lease</i> —Where rent is fixed and no premium is paid, for less than 1 year, same duty as Bond for whole amount; not more than 3 years, same as Bond for average annual	

## INDIAN STAMP DUTIES—contd.

	Rs. A.
rent reserved; over 3 years, same as Conveyance for consideration equal to amount or value of the average annual rent reserved; for indefinite term, same as Conveyance for amount equal to 10 years' rent; in perpetuity, same as Conveyance for con- sideration equal to one-fifth of rents paid in respect of first 50 years. Where there is premium and no rent, same as Convey- ance for amount of premium; premium with rent, same as Conveyance for amount of pre- mium, and same duty as Lease without premium.	
<i>Letter</i> — <i>Allotment of shares</i> ...	0 1
<i>Credit</i> ...	0 1
<i>License</i> ...	10 0
<i>Memo. of Association of Company</i> , if accompanied by Articles of Association ...	15 0
If not so accompanied ...	40 0
<i>Notarial Act</i> ...	1 0
<i>Note or Memo. on Sale of Goods or Stock</i> , exceeding Rs. 20 ...	0 1
<i>Note of Protest by a Ship's master</i>	0 8
<i>Partnership</i> —Where the capital does not exceed Rs. 500 ...	2 8
In any other case ...	10 0
<i>Dissolution of</i> ...	5 0
<i>Policy of Insurance</i> — (1) <i>Sea</i> .—Where premium does not exceed rate of 2 a., or $\frac{1}{2}$ per cent. of amount insured ...	0 1
In any other case for Rs. 1,000 or part thereof ...	0 2
(2) <i>For time</i> . For every Rs. 1,000 insured, not exceeding 6 months ...	0 2
Exceeding 6 and not exceeding 12 months ...	0 4
(3) <i>Fire</i> .—For 1 month or less, not exceeding Rs. 1,000 ...	0 2
Forevery further Rs. 1,000 or part More than 1 and not exc. 3 months, not exc. Rs. 1,000 ...	0 3
Forevery further Rs. 1,000 or part More than 3 months, not exceed- ing 6 months, per Rs. 1,000 ...	0 4
Exc. 6 months, per Rs. 1,000 ...	0 6
(4) <i>Accident and Sickness</i> — Against Railway accident, valid for a single journey only	0 1
In any other case—for the maxi- mum amount which may be- come payable in the case of any single accident or sickness where such amount does not exc. Rs. 1,000, and also where amount exc. Rs. 1,000, for every Rs. 1,000 or part ...	0 2
(5) <i>Life or any other Insurance</i> , per Rs. 1,000 ...	0 6
In case of a re-insurance by one Company with another— $\frac{1}{2}$ of duty payable in respect of the original insurance, but not less than 1 anna, or more than 1 rupee.	
<i>Power of Attorney</i> — For the sole purpose of procur- ing the registration of one or more documents in relation to a single transaction ...	0 8
Authorising 1 or more persons to act in a single transaction other than that mentioned above ...	1 0
Authorising not more than 5 persons to act jointly and severally in more than 1 trans- action, or generally ...	5 0
Authorising more than 5 but not more than 10 persons to act	10 0
In any other case, for each per- son authorised ...	1 0
<i>Praty</i> ...	0 1
<i>Receipt for value exc. Rs. 20</i> ...	0 1
<i>Shipping Order</i> ...	0 1
<i>Surrender of Lease</i> —When duty with which Lease is chargeable	

## INDIAN STAMP DUTIES—contd.

	Rs. A.
does not exceed Rs. 5—The duty with which such Lease is chargeable.	
In any other case ...	5 0
<i>Transfer of Shares</i> —One quarter of the duty payable on a Con- veyance for a consideration equal to the value of the share.	
<i>Transfer of any Interest secured by a Bond, Mortgage-deed, or Policy of Insurance</i> —If duty on such does not exceed Rs. 5—The duty with which such Bond, &c., is chargeable.	
In any other case ...	5 0
<i>Trust</i> , Declaration of—Same duty as a Bond for a sum equal to the amount or value of the property concerned, but not exceeding ...	15 0
Revocation of—Ditto, but not exceeding ...	10 0
<i>Warrant for Goods</i> ...	0 4

## FOREIGN MONIES, AND THEIR ENGLISH EQUIVALENTS.

### FULL EXCHANGE VALUES.

	£	s.	d.
<i>America</i> .—(United States)			
Eagle ...	2	1	1
Dollar of 100 Cents ...	0	4	1
Cent (about) ...	0	0	0
<i>Austria</i> .—Silver Crown ...	0	0	10
20 Hellers ...	0	0	2
<i>Belgium</i> .—Gold Ten-Franc Piece ...	0	7	11
Silver Five Franc ...	0	3	11
" One Franc ...	0	0	9
<i>Denmark, Norway and Sweden</i> . Krone ...	0	1	1
100 Ore = 1 Krone			
<i>Egypt</i> .—Gold 100-Piastre Piece (Egyptian £) ...	1	0	3
One Piastre ...	0	0	2
<i>France</i> .—Gold Twenty-Franc Piece ...	0	15	10
Silver Five Franc-Piece ...	0	3	11
Franc ...	0	0	9
<i>Germany</i> (New Coinage).— Gold 20-Mark Piece ...	0	19	7
" 10 " " ...	0	9	9
Silver 5 " " ...	0	4	9
" 1 " " ...	0	0	11
" $\frac{1}{2}$ " " ...	0	0	5
2-Thaler Piece ...	0	5	10
1 " " ...	0	2	11
<i>Greece</i> .—20-Drachmai Gold Piece ...	0	15	10
One Drachmai (silver) ...	0	0	9
<i>Holland</i> .—Ten Florins ...	0	16	4
Florin ...	0	1	7
<i>India</i> .—Gold Mohur = 15 Rupees ...	1	9	2
Rupee (varying in value) ...	0	1	4
" " " ...	0	0	8
" " " ...	0	0	4
<i>Italy</i> .—Gold 20-Franc Piece ...	0	15	10
" 5 " " ...	0	3	11
Franc ...	0	0	9
<i>Portugal</i> .—Gold Milreis ...	0	4	4
Silver Half ...	0	2	2
100 Reis ...	0	0	5
<i>Russia</i> .—Half Imperial ...	0	15	10
Silver Rouble ...	0	3	2
Ten-Copek Piece ...	0	0	3
<i>Spain</i> .—Gold Alfonso ...	0	19	9
Silver Dollar ...	0	3	11
" Escudo ...	0	1	11
Peseta ...	0	0	9
" " " ...	0	0	4
Real de Vellon ...	0	0	2
<i>Switzerland</i> .—Gold 20-Franc Piece ...	0	15	10
Silver Five-Franc Piece ...	0	3	11
Silver Franc ...	0	0	9
<i>Turkey</i> .—Gold Medjidie ...	0	18	0
Silver Medjidie ...	0	3	6
Piastre (40 Paras) ...	0	0	2



## GENERAL INFORMATION. &c.

RATES OF POSTAGE, &c., IN HONG KONG AND  
AT BRITISH POSTAL AGENCIES IN CHINA.

To	Letters, per ½ oz.	Single Post Cards, each.	Reply Post Cards, each.	Books, Commer- cial Papers,† Newspapers,†† Patterns,* &c., per 2 oz.	Regis- tration.
	Cents. 10	Cents. 4	Cents. 8	Cents. 2	Cents. 10
<b>UNION COUNTRIES</b> .. .. .					
The rate for letters posted in Hong Kong and at the several British Postal Agen- cies in China for the United Kingdom, India, Ceylon, Aden and British Posses- sions and Protectorates (for list see page 6), which have adopted the Imperial Penny Postage, is 4 cents per ½ oz. Hong Kong and British Post Offices at Shanghai, Ningpo, Hankow, Liu Kung T'ai, Swatow, Amoy, Foo- chow, Hoihow and Canton (between Hong Kong and Canton the rate for letters is 2 cents per ½ oz.).. ..	4	4	8	2	10
Macao (from Hong Kong and Canton) .. .. .	4	1	2	2	10
Macao (from all other British Post Offices in China) .. ..	2	1	2	2	10
<b>NON-UNION COUNTRIES:—</b>	5				
Abyssinia .. .. .	10	4	8	2	none
Afghanistan .. .. .	10	4	8	2	10
Arabia .. .. .	10	4	8	2	10
China .. .. .	5	1	2	2	10 †
Foreign (non-British) establishments .. .. .	10	4	8	2	10
Friendly Islands (Tonga Islands) .. .. .	10	4	8	2	10
Morocco (with a few excep- tions) .. .. .	10 ½	4	8	2	none
Navigators' Island (Samoa), Solomon Island, Rhodesia (N.E. & N.W.), including Northern Zambesia .. .. .	10	4	8	2	10
Other parts .. .. .	10 ½	4	8	2	10
<b>LOCAL DELIVERY</b> .. .. .	2	1	2	2	10

† An additional charge is made on delivery.

† Registration in China through British Offices extends to

Hoihow, Canton, Swatow, Amoy, Foochow, Ningpo, Shanghai,  
Hankow and Liu Kung Tau only.

†† Single Newspapers, 2 cents per 4 ozs., or fraction, to Australia,

NOTE.—Limit of weight of Book Packets is:—To British Offices

**Parcel Post.**—Hong Kong, China and Siam, 1st lb., 10 cents; each

**Money Orders** are issued at Hong Kong and Shanghai. The

commission charged is as follows:—(a.) Upon the Australian States and New Zealand:—For each £ or fraction of a £, 12 cents. (b.) On the United Kingdom and on Countries drawn through London:—For each £ or fraction of a £, 8 cents. (c.) On India and Ceylon:—Up to 20 rupees, 20 cents; 50 rupees, 40 cents; 70 rupees, 60 cents, 100 rupees, 80 cents; 150 rupees, \$1.00. (d.) On other places:—Up to \$10, 20 cents; \$25, 40 cents; \$55, 60 cents; \$50, 80 cents; \$60, \$1.00; \$75, \$1.20; \$85, \$1.40; \$100, \$1.60. No Order (except in the case of those drawn on India, for which the limit is 150 rupees, and those on Japan, Borneo and Siam, for which the limit is \$100) must exceed £10 or \$50. Orders on the Countries drawn through the London Post Office are paid less the following discount, for which the remitter should allow. All such Orders must be expressed in British currency:—For sums not exceeding £2, -/3; exceeding £2 but not exceeding £6, -/6; exceeding £6 but not exceeding £10, -/9.

PHASES OF THE MOON, 1903 (CALCUTTA).

New Moon; ☾ First Quarter; ☉ Full Moon; ☾ Last Quarter

January.	April.	July.	October.
----------	--------	-------	----------

January.		April.		July.		October.	
7. )	3h 50m a.m.	5. )	7h 45m a.m.	2. )	2h 55m a.m.	6. )	9h 17m p.m.
13. )	8h 11m a.m.	12. )	6h 12m a.m.	9. )	11h 30m p.m.	14. )	1h 50m a.m.
20. )	5h 42m p.m.	20. )	3h 23m a.m.	18. )	1h 17m a.m.	20. )	2h 24m p.m.
28. )	10h 32m p.m.	27. )	7h 25m p.m.	24. )	6h 39m p.m.	28. )	2h 26m p.m.
				31. )	1h 8m p.m.		
February.		May.		August.		November.	
5. )	4h 6m p.m.	4. )	1h 10m p.m.	8. )	2h 47m p.m.	5. )	1h 21m a.m.
12. )	6h 51m a.m.	11. )	7h 11m p.m.	16. )	11h 16m a.m.	12. )	8h 39m a.m.
19. )	10h 16m p.m.	19. )	6h 11m p.m.	23. )	1h 44m a.m.	19. )	11h 31m a.m.
27. )	4h 15m p.m.	17. )	4h 43m a.m.	30. )	2h 28m a.m.	27. )	11h 30m a.m.
March.		June.		September.		December.	
7. )	1h 7m a.m.	2. )	7h 18m p.m.	7. )	6h 33m a.m.	5. )	6h 6m a.m.
13. )	6h 6m p.m.	10. )	9h 11m a.m.	14. )	7h 7m p.m.	11. )	4h 46m p.m.
21. )	8h 11m a.m.	18. )	4h 37m p.m.	21. )	10h 24m a.m.	19. )	3h 19m a.m.
28. )	7h 19m a.m.	25. )	4h 44m p.m.	28. )	7h 2m p.m.	27. )	8h 16m a.m.

8

CEYLON POSTAL RATES.

**Inland Rates.**—*Letters* per oz., 5 cents. *District Letters*, 2 cents per oz. *Post Cards*, 2 cents; reply, 4 cents. *Letter Cards*, 5 cents; reply, 10 cents. *Printed Matter*, not exc. 5 ozs., 2 cents; exc. 5 ozs., not exc. 10 ozs., 5 cents; exc. 10 ozs., not exc. 1 lb., 10 cents; every add. lb. or fraction, 10 cents. *Packages*, not exc. 4 ozs., 5 cents; not exc. 8 ozs., 10 cents; not exc. 1 lb., 15 cents; every add. lb., or fraction, 15 cents.

**Rates to India.**—*Letters* per  $\frac{1}{2}$  oz., 5 cents. *Post Cards*, 2 cents; reply, 4 cents. *Printed Matter, &c.*, 1st 4 ozs., 2 cents; every add. 2 ozs., 2 cents. *Patterns or Samples*, 4 ozs., 5 cents; each add 2 ozs., 3 cents. *Parcels*, not exc.  $\frac{1}{2}$  lb., 20 cents; 1 lb., 25 cents; each add. lb., up to 11 lbs., 15 cents; 11 lbs. to 12 lbs., 3 Rs., 25 cents; each add. lb. to 50 lbs., 25 cents.

**Foreign Rates.**—*Letters* to the United Kingdom, Aden and the British Colonies, &c., which have adopted the Imperial Penny postage (for list see Indian Foreign Postal Rates, page 6), each  $\frac{1}{2}$  oz., 6 cents. All other countries each  $\frac{1}{2}$  oz., 15 cents. *Post Cards*, 6 cents; reply, 12 cents. *Printed Papers*, per 2 ozs., 3 cents; every add. 2 ozs., 2 cents. *Commercial Papers*, per 10 ozs., 15 cents; every add. 2 ozs., 3 cents. *Patterns and Samples*, per 4 ozs., 5 cents; every add. 2 ozs., 3 cents.

**Money Orders to United Kingdom.**—Not exc. £2, 25 cents; £5, 75 cents; not exc. £10; 1 rupee.

Telegraph Rates, Inland—"Urgent" Telegrams, 75 cents.

"Ordinary," 25 cents per first 8 words or group of 3 figures, every add. word or group of 3 figures, 10 cents and 5 cents respectively, address free.

**Parcel Post to United Kingdom.**—Charge is first 3 lbs., 75 cents; above 3 lbs. and up to 7 lbs., 1 R. 50 cents; above 7 lbs. and up to 11 lbs., 2 Rs. 25 cents. Limit, 3 ft. 6 ins. in length; length and girth together, 6 ft. Parcels containing valuables *must* be insured for at least half of their value.

SUN RISES AND SETS AT BOMBAY, 1903.

1902.	Rises.	Sets.	Corr.	1903.	Rises.	Sets.	Corr.	1903.	Rises.	Sets.	Co
-------	--------	-------	-------	-------	--------	-------	-------	-------	--------	-------	----

1903.	Rises.	Setts.	Corr.	1903.	Rises.	Setts.	Corr.	1903.	Rises.	Setts.	Corr.
	<i>h. m.</i>	<i>h. m.</i>	<i>m.</i>		<i>h. m.</i>	<i>h. m.</i>	<i>m.</i>		<i>h. m.</i>	<i>h. m.</i>	<i>m.</i>
<i>Jan. 1</i>	6 35	5 33	+10	<i>May 7</i>	5 30	6 23	-7	<i>Sept. 3</i>	5 45	6 12	-3
<i>8</i>	6 30	5 37	+9	<i>14</i>	5 47	6 25	-8	<i>10</i>	5 48	6 6	-1
<i>15</i>	6 33	5 41	+9	<i>21</i>	5 45	6 27	-8	<i>17</i>	5 49	6 0	-1
<i>22</i>	6 39	5 40	+9	<i>28</i>	5 43	6 27	-8	<i>24</i>	5 50	5 54	0
<i>29</i>	6 37	5 50	+7	<i>June 4</i>	5 43	6 33	-9	<i>Oct. 1</i>	5 52	5 48	+4
<i>Feb. 5</i>	6 34	5 54	+7	<i>11</i>	5 43	6 33	-9	<i>8</i>	5 53	5 42	+2
<i>12</i>	6 31	5 57	+5	<i>18</i>	5 44	6 27	-10	<i>15</i>	5 55	5 36	+3
<i>19</i>	6 27	6 0	+4	<i>25</i>	5 26	6 28	-10	<i>22</i>	5 58	5 31	+4
<i>26</i>	6 23	6 3	+3	<i>July 2</i>	5 28	6 39	-10	<i>29</i>	6 0	5 27	+5
<i>Mar. 5</i>	6 18	6 6	+2	<i>9</i>	5 31	6 39	-10	<i>Nov. 5</i>	6 4	5 24	+6
<i>12</i>	6 12	6 8	+4	<i>16</i>	5 33	6 38	-9	<i>12</i>	6 8	5 22	+7
<i>19</i>	6 6	6 9	0	<i>23</i>	5 35	6 37	-9	<i>19</i>	6 11	5 20	+8
<i>26</i>	6 0	6 11	0	<i>30</i>	5 37	6 35	-8	<i>26</i>	6 15	5 20	+9
<i>Apr. 2</i>	5 54	6 13	-1	<i>Aug. 6</i>	5 39	6 31	-7	<i>Dec. 3</i>	6 20	5 21	+9
<i>9</i>	5 43	6 13	-2	<i>13</i>	5 41	6 27	-6	<i>10</i>	6 24	5 22	+10
<i>16</i>	5 43	6 17	-3	<i>20</i>	5 43	6 22	-5	<i>17</i>	6 28	5 24	+10
<i>23</i>	5 39	6 19	-4	<i>27</i>	5 45	6 17	-4	<i>24</i>	6 32	5 28	+10
<i>30</i>	5 34	6 21	-6					<i>31</i>	6 35	5 33	+10

„ Madras, *Subtract* + cor. from or *add* - cor. to „ „

SUNSET Calcutta, Subtract  $\frac{1}{2}$  cor. from or add - cor. to " "

„ Madras, *Add* + cor. to or *subtract*—cor. from „ „

## ALMANAC FOR 1904.

13	Dominical Letters	C B	Julian
----	-------------------	-----	--------

The Year 5665 of the Jewish Era commences on Sept. 10.  
The Year 1222 of the Mohammedan Era commences on March 18.

[illegible]

ay  
ay  
ay  
es  
ssda  
y  
da  
ay  
ay  
ay  
es  
ssda  
y  
da  
ay  
ay  
ay  
es  
ssda  
y  
da  
ay  
ay  
ay  
es  
ssda  
y  
da

[illegible]



## CONCISE DIRECTORY.

We have inserted this short Directory for the use of our Subscribers under the impression that it will prove of utility to country and foreign residents who may desire to communicate with a firm in any particular Trade or Profession, and have no means at hand of knowing whom to address.

### ACTS OF PARLIAMENT, PARLIAMENTARY PAPERS, GOVERNMENT PUBLICATIONS—

(Sole Agents in England and Wales)  
Eyre & Spottiswoode, East Harding-st., E.C.

### AERATED PASTRY FLOUR—

Coombs' Eureka Aerated Flour Co., Ltd.,  
Lenton Boulevard, Nottingham, and  
8 & 8a, Farringdon-road, London, E.C.  
Also owners of Farrar's Pastry Roller  
(Patent). Tele. add.: "Eureka, Nottingham,"  
"Antidotal, London."

### AGENTS, COLONIAL AND INDIAN AND GENERAL MERCHANTS—

James Porter & Co.,  
13, Fenchurch-avenue, London, E.C.

### ALKALI MANUFACTURERS—

The United Alkali Co., Limited,  
30, James-street, Liverpool.  
Ammonia Alkali, Bleaching Powder, Soda  
Crystals, Caustic Soda, Bicarb: Soda, &c.

### AMMUNITION—

The King's Norton Metal Co., Limited,  
King's Norton, nr. Birmingham, England.  
Managing Directors, T. R. and T. A. Bayliss.  
Tele. add.: "Metal, King's Norton." Manu-  
facturers of all kinds of Military Ammunition  
for Small Arms and Quick-firing Guns. Rolled  
Brass, Copper, Nickel, &c., &c. Brass and  
Copper Rivets and other Specialities.

### ARTESIAN WELLS—

Le Grand & Sutcliff,  
125, Bunhill-row, London, E.C.  
Registered Trade Mark, "Abyssinian."

### ART FURNITURE MANUFACTURERS—

Oetzmann & Co., 62 to 79, Hampstead-road,  
London; 60 & 61, Grafton-street, Dublin;  
and 75, Union-street, Ryde, I. W.

### ART METAL WORKERS—Hill & Smith,

Brierley Hill Ironworks, Staffordshire.  
Art Metal Work in Iron, Bronze and Brass.  
Iron Fencing, Gates, Roofs, &c. Catalogues free.

### ASBESTOS—

The United Asbestos Co., Limited,  
Dock House, Billiter-street, London, E.C.  
Asbestos Goods, Engineers' Stores, Lubri-  
cating Oils, Creams and Greases, Boiler and  
Pipe Covering Composition. Tele. address:  
"Asbestos," London.

### BIBLES AND PRAYER BOOKS—

Henry Frowde,  
Oxford University Press Warehouse,  
Amen Corner, London, E.C.  
(Of all booksellers throughout the World.)

### BILLIARD AND BAGATELLE TABLE MAKER—

George Edwards, 134, Kingsland-road,  
London, N.E. All Tables have the low and  
fast Cushions, not affected by any climate.  
Also large stock of Second-hand Tables.

### BIRD SEEDS—

R. Hyde & Co., Camberwell, London.  
Æsthetic Bird Seeds, Parrot Food, Shell,  
Gravel, &c., in packets. Sold everywhere.

### BLACK VARNISH MANUFACTURERS—

Smith & Forrest,  
Holt Town Oil Works, Manchester.

### BLOTTING PAPER MANUFACTURERS—

T. B. Ford (Limited),  
Snakeley Mill, Loudwater.  
Samples and Prices on application. Each  
sheet water-marked "Ford, 428 Mill."

### BOLT & NUT, SCREW & RIVET MAKERS—

Herbert W. Periam, Limited,  
Floodgate-street Works, Birmingham.  
Also maker of Washers and Roofing Nails.

### BOOTS AND SHOES—

Derham Brothers, Limited,  
Bristol, Northampton & Kingswood.  
Wholesale and Export only. The "Z,"  
"Aerial" and "Omega" Brands. Tennis,  
Cycle and all other descriptions.

### BORAX & BORACIC ACID MANUFACTURERS—

Borax Consolidated, Limited,  
77-78, Gracechurch-street, London, E.C.  
Miners of Borates and Manufacturers of  
Borax, Boracic Acid and Boron Products.

### BOXES—PLAIN, FANCY & FOLDING—

Johns, Son & Watts, Ltd.,  
40, 42, 44, 46 & 48, City-road, London, E.C.  
Makers of all kinds of Plain, Fancy and  
Folding Boxes, and Show-Cards.  
Tel. Add.: Johns, London. Tel. No.: 195  
Bank.

### CARRIAGE MANUFACTURERS—

Henry Whitlock, Limited, Holland Gate,  
Kensington, & Turnham-green, London, W.

### CLOTHING MFRS. AND CLOTH MERCHANTS—

Grainger & Smith, Limited.  
Principal Warehouse & Factories, Dudley;  
also at 64, Aldermanbury, London; Carr's-  
lane, Birmingham; Trinity-st., Hanley; Mount-  
st., Nottingham; Guildhall-st., Preston; Spen-  
cer-st., Blackburn; Victoria-st., Belfast; and  
Parliament-st., Dublin.

### COCAOA, COCOA ESSENCE & CHOCOLATE MFRS.

James Epps & Co., Limited. Manufactory:  
Holland-street, Blackfriars, London.

### COFFEE ESSENCES—

A. C. Sanderson & Co., Easter-road, Edin-  
burgh. Make "Best Quality" in the Mar-  
ket. Samples and Prices on application.

### COLOURED PAPERS—

Thomas & Green, Limited,  
Soho Mills, Woodburn, Bucks, and 196,  
Upper Thames-st., London, E.C. Tele. Add.:  
"Thomas, Woodburn," & "Rainbow, London."

### CONFECTIONERS—

M. A. Craven & Son,  
Ebor Confectionery Works, York.

### COPYING APPARATUS MANUFACTURERS—

The Copying Apparatus Co., Limited,  
123, Cannon-street, London, E.C.  
The Simplex Hektograph, The Neo-Cyclo-  
style, The A.B.C. Copier, The Automatic  
Cyclostyle, The Edison Mimeograph, The  
Duplicate, &c. Write for circulars.

### CORSET MANUFACTURERS—

Chappell, Allen & Co., Ltd.,  
Bristol and London.  
Manufacturers of all kinds of Corsets.  
Specialties: "Fitu," "Brace-line," and  
"Quillbone."

### COTTON BAGS—

From 1 to 140 lbs. in white and unbleached  
Calico. T. & W. Judge. Original and  
Largest Manufacturers and Printers, Cumber-  
land Works & Manchester Works, Kennington,  
London. Tele. Add.: "Cotton Bag," London.

### CRANES AND LIFTING MACHINERY—

Thomas Smith, Steam Crane Works, Old  
Foundry, Rodley, near Leeds.  
Telegraphic Address: "Smith, Rodley."  
London Office, 9, Victoria-st., Westminster,  
S.W. Telegraphic Address: "Accrocher,  
London."

### CYDER (Devonshire Champagne)—

John Symons & Co., Limited,  
Totnes, Devon, and Ratcliff, London, E.  
Special brands: "Imperial," & "Apple & Bos-  
som." Sole makers of Symonia & Sydrina.

### DISINFECTORS—

Manlove, Alliott & Co., Ltd.,  
Engineers, Nottingham;  
also Laundry Machinery & Hydro-Extractors.

### DISINTEGRATORS—

J. Harrison Carter,  
Engineering Works, Dunstable, England.

### DOG BISCUITS—

Walker, Harrison & Garthwaites, Ltd.,  
Phoenix Biscuit Works,  
Ratcliff Cross, London, E.

### ELECTRICAL ENGINEERS & CONTRACTORS—

Crompton & Coy., Ltd.,  
Salisbury House, London Wall, London,  
Works: Chelmsford, England. [E.C.  
Manufacturers and Contractors for complete  
Electrical Equipment.

### EMERY WHEEL MAKERS—

Luke and Spencer, Limited,  
Broadheath, Manchester.  
Also Manufacturers of Grinding and Polish-  
ing Machinery. Catalogue on application.

### ENAMELLED LETTERS AND TABLETS—

Garnier & Co., Inventors and Actual Makers,  
86, Farringdon-street, London, E.C., and  
Ludgate Enamelling Works, Willesden.

### ENGINEERS' STORES—

George Hatch, Ltd.,  
Queenhithe, London, England.  
Illustrated Catalogue.

### ENGINES—STEAM, GAS AND OIL—

Robey & Co., Limited,  
Globe Works, Lincoln, England.

### ENGLISH PRESERVED PROVISIONS—

Harry Peck & Co., Snow Hill, London.  
Table Delicacies and fancy Cheeses, packed  
in Tins and Glasses, for Export; fine fancy  
Groceries. Sole Manufacturers of the cele-  
brated "Archer" Brand Potted Meats and  
Fish, Galantines, Tongues, Patés, Soups,  
Sausages, and Preserved Provisions.

### FANCY GOODS AND TOYS—

Purses, Bags, and such like.  
Faudels, Newgate-street, London.

### FIRE-BRICK MANUFACTURERS—

E. J. & J. Pearson, Limited,  
Fire Clay Works, Stourbridge.

### FIREWOOD SPLITTING, BUNDLING, "IDEAL"

Saw Guards, Benches & Sharpening Machinery  
M. Glover & Co. Write us. "Make Money."  
Patentees and Sole Makers, Leeds.

### FOOD FOR INFANTS, INVALIDS, AND THE AGED—

Neave's Food.  
To be obtained of all Chemists and Stores.

### FUSE FOR BLASTING—

The Bennett Fuse. "Crown Brand."  
William Bennett, Sons & Co.,  
Camborne, Cornwall, England.

### GAME & POULTRY FOODS—

Walker, Harrison & Garthwaites, Ltd.,  
Phoenix Biscuit Works,  
Ratcliff Cross, London, E.

### GAS METER MANUFACTURERS—

Thomas Glover & Co., Ltd., 214—222, St.  
John-st., Clerkenwell Green, London, E.C.  
New Improved Prepayment Meters for  
Pennies, Shillings or any coin.

### GAS, WATER AND SANITARY FITTINGS, AND HOT WATER APPARATUS—

The Thames Bank Iron Co.,  
Upper Ground-street, London, S.E.

### GAUGE GLASS MANUFACTURERS—

Tomey & Sons, Tay Glass Works, Perth,  
Sole Makers of the "Eureka" Gauge Glass.

### GELATINE—Nelson, Dale & Co., Limited,

14, Dowgate-hill, London, E.C.  
For First Class Jellies.

### GLASS BOTTLE MANUFACTURERS—

Cannington, Shaw & Co., Limited,  
St. Helens, Lancashire, England.  
Manufacturers of Glass Bottles, Codd's  
Ebonite Screw and Crown Cork Mouth  
Confectioners' Bottles, Boxes and Cases.

### GRAB DREDGING AND EXCAVATING MACHINERY (The Kingston Patent)—

Rose, Downs & Thompson, Limited,  
Old Foundry, Hull; and  
12, Mark-lane, London, E.C.

### GREASE MANUFACTURERS—Smith & Forrest,

Holt Town Oil Works, Manchester.

### HORSE HAIR MANUFACTURERS—

Edward Webb & Sons (Worcester), Limited,  
Copenhagen-street, Worcester.  
Hair Cloth of all kinds, Curled Hair, Horse  
Hair Carpet, Hop and Cider Cloths, Hair  
Mattresses, Brush Drafts.

### HORTICULTURAL BUILDINGS—

Boulton & Paul, Limited, Manufacturers,  
Rose Lane Works, Norwich.

### HYDRAULIC MACHINERY, PRESSES, PUMPS, ACCUMULATORS, RIVETERS, VALVES, &c.—

Henry Berry & Co., Ltd., Leeds.

### INDIARUBBER MANUFACTURERS—

P. B. Cow & Co., Works, Streatham.  
46 & 47, Cheapside, London, E.C.  
Coats, Cloaks, Air and Water Goods, Tennis,  
Cricketer Hold-alls, Mats, Garden Hose, &c., &c.

### LAMP (STREET), &c. MANUFACTURERS, ELECTRIC LIGHT PILLARS, BRACKETS, &c.—

Walter Macfarlane & Co.,  
Architectural, Sanitary and General  
Ironfounders, Saracen Foundry, Glasgow.

### LAUNCH BUILDERS—

The Thames Valley Launch Co., Ltd., Chief  
Offices & Works, Weybridge, Surrey.  
Designers and Builders of all kinds of  
Launches for Home or Abroad. Estimates  
Free. W. Rowland Edwards, A.M.I.E.E.,  
Managing Director.



# CONCISE DIRECTORY—continued.

## LENSES FOR SHIP AND RAILWAY LAMPS—

Jas. Stevens & Son,  
Victoria Glass Works, Birmingham.  
Lenses, Port-hole glasses, bent glasses,  
Bevelled glasses, and glass of every descrip-  
tion used in Steamers or Railways.

## LIFTS—

R. Waygood & Co., Limited,  
Falmouth-road, London, S.E.

## LIME JUICE AND LIME JUICE CORDIAL—

Evans, Sons & Co., Liverpool, and  
Evans, Lescher, & Webb, London.  
Evans & Sons, Limited, New York,  
U.S.A., and Montreal, Canada.

Sole Consignees of "Montserrat" Lime  
Juice.

## MACHINERY STORES FOR ENGINEERS, MINES,

MILLS, TEA GARDENS, &c.—

George Hatch, Ltd.,  
Queenhithe, London, England.  
Illustrated Catalogue.

## MALTED FOOD FOR INFANTS AND INVALIDS—

Coombs' Eureka Aerated Flour Co., Ltd.,  
Lenton Boulevard, Nottingham, and  
8 & 8A, Farringdon-road, London, E.C.  
Also Makers of Custard, Blanc Mange,  
Egg and Light Pastry Powders (or Baking  
Powder), Fruit Saline, and Health Salt.

## MANTLE MANUFACTURERS (to the Trade and

Shippers only)—  
Corby, Palmer and Stewart, 39, 40, 41,  
St. Paul's Churchyard, London, E.C.  
Ladies' and Children's Mantles, Jackets, Capes,  
Blouses, Mackintoshes, Imperial Cloaks, Fur  
Capes and Costumes.

## MAPS: PUBLISHER, MAPSELLER AND GEO-

GRAPHICAL BOOKSELLER—

Edward Stanford,  
12, 13 and 14, Long Acre, London, W.C.  
(Branch Office: 26 and 27, Cockspur-street,  
S.W.) Catalogues Free.

## METALS AND ALLOYS—

The Phosphor Bronze Co., Ltd.,  
Southwark, London, S.E.  
Ingots, Castings, Bars, Wire, Sheet,  
&c., as supplied to British and Foreign  
Governments, Railways, Engineers, &c.,  
throughout the World.

## MINING, QUARRYING & AGRICULTURAL TOOLS.

The Hardy Patent Pick Co., Ltd., Sheffield.

## MOULDING AND PICTURE FRAME MFRS.

AND PRINTSELLERS—

Beckmann Bros.,

26 and 27, Cow Cross-street, London, E.C.

Telephone, 952, Holborn.

## MUSIC PUBLISHERS—

Edwin Ashdown, Limited, Hanover-square,

London, W.: New York and Toronto.

## NEEDLE, FISH-HOOK AND FISHING TACKLE

MANUFACTURERS—

Henry Milward & Sons, Limited,

Washford Mills, Redditch.

Sole Makers of the "Calyx-eyed" easy

threading and "Best Best" Needles. Makers

of the very best Fishing Tackle.

## OAKUM MANUFACTURERS—

Anglo-American Rope and Oakum Co.,

Liverpool. All kinds Machine Spun and

Unspun Oakum. Awarded 15 Medals and

Diplomas. Established 1868.

## OFFICE FITTERS AND FURNITURE MFRS.—

Rankin & Co., Successors to Newson & Co.,

Finsbury House, Finsbury-square; and

2, 4 & 6, Worship-street, London, E.C.

Manufacturers of all kinds of Office Furniture

and Fittings. Largest Stock in London.

## OIL AND ROSIN DISTILLERS, REFINERS AND

MANUFACTURERS—

Smith & Forrest,

Holt Town Oil Works, Manchester.

## OIL SEED CRUSHING, REFINING AND FILTER-

ING MACHINERY—

Rose, Downs & Thompson, Limited,

Old Foundry, Hull; and

12, Mark-lane, London, E.C.

## OPTICIANS—Ross, Ltd., Manufacturers,

111, New Bond-street, London, W.

Microscopes, Telescopes, Field Glasses,

Photographic Lenses, &c., &c. Tele. Address:

"Rossano, London."

## PAPER MAKERS—

Alex. Pirie & Sons, Limited,

Stoneywood Works, Aberdeenshire, and

97, Farringdon-street, London, E.C.

Tele. Address: "Pirie, Aberdeen."

## PATENT AGENTS—Jensen & Son,

77, Chancery-lane, London, W.C.

Patents, Designs and Trade Marks secured all

over the World.

## PHOTOGRAPHIC APPARATUS—

George Houghton & Son,  
88 and 89, High Holborn, London, W.C.  
Hand & Stand Cameras & all Materials.

## PHOTOGRAPHIC DRY PLATES AND PAPERS—

Cadett & Neall, Ltd.,  
Ashted, Surrey, England. "Cadett"  
Plates. Largest Home Sale. Printing-Out and  
Bromide Papers, &c. Best only. Please  
write for Booklets, &c. Post free. Gratis.

## PHOTOGRAPHIC SHUTTERS—

The Thornton-Pickard Manufacturing  
Co., Limited, Altrincham.  
Original and Largest Makers of Shutters  
for every class of work.

## PICKS—

The Hardy Patent Pick Co., Ltd., Sheffield.

## PLATINUM REFINERS AND DEALERS—

Johnson, Matthey & Co., Ltd.,  
74-81, Hatton Garden, London, E.C.  
Platinum Apparatus—Sheet, Foil, Wire,  
Crucibles, &c. Gold and Silver Refiners.

## POLISHING POWDER—

J. F. Baumgartner & Co.,  
Newman-street, London, W.  
"La Brillantine" Metallic Powder. The  
best and cheapest Polishing Powder for  
Metals and Glass (especially Brass).

## PORTABLE WOOD & IRON BUILDINGS—

Boulton & Paul, Limited, Manufacturers,  
Rose Lane Works, Norwich.

## POSTAGE STAMP MERCHANTS AND PHILA-

TIC PUBLISHERS—

Whitfield King & Co., Ipswich.  
Foreign and Colonial Postage Stamps for  
Collectors. Publishers of the Universal  
Standard Catalogue of the Postage Stamps  
of the World. Price 1/3, post free.

## PRINTERS' ROLLERS AND COMPOSITION—

"The Durable" Printers' Roller Co., Ltd.,  
Charles-st., Hatton-gdn., London, E.C.  
Contractors to H.M. Printing Offices.  
Compo. for Home and Export. Send for  
"Right-Hand of the Press," free by post.

## PRINTING MACHINERY OF ALL KINDS—

William Dawson & Sons, Ashfield Foundry,  
Otley, Yorks. Inventors and Paten-  
tees of the Original "Wharfedale."

## PUMPING MACHINERY MANUFACTURERS—

Pulsometer Engineering Co., Limited,  
Reading, England.  
Steam Pumps for all duties, including "The  
Pulsometer." The best out-door pump.

## ROAD MATERIALS—

Mountsorrel Granite Company, Limited,  
Mountsorrel, near Loughborough.  
Full Particulars and Prices on application.  
Tele. Address: "Granite, Mountsorrel."

## ROPE MANUFACTURERS—

R. Hood Haggie & Son (Limited),  
Newcastle-on-Tyne and London.  
Estbd. 1789. Makers of Ropes of all kinds.  
Speciality—Robin Hood Brand Manila Rope.  
(Foreign Orders through Merchants.)

## RUBBER STAMP & TYPE MANUFACTURERS—

E. M. Richford,  
8 & 9, Snow Hill, London.  
Stamps, Type, Stencils, Self-Inking Pads,  
&c. Complete Outfits for making Stamps,  
with full instructions. Catalogues free.

## SAFES, IRON AND STEEL DOORS—

Frederic Whitfield & Co.,  
11 & 12, St. Andrew's Hill, London, E.C.  
Works: Oxford-street, Birmingham.

## SALT FOR THE TABLE, THE BATH AND THE

GARDEN—D. Bumsted & Co.,

36, King William-street, London, E.C.

## SANITARY POTTER—S. H. Rowley,

Swadlincote, near Burton-on-Trent.  
Patentee & Maker of the "Washout" Closet, &  
of Wash-down Closets, Pedestal Closets, Lava-  
tories, Sinks, Urinals, &c., of finest Quality.

## SEALING WAX—

George Waterston & Sons, Edinburgh,  
8, St. Bride Street, City, London.  
Makers of the "Bee Brand" Letter, Parcel  
and Bottle Waxes for all climates.

## SEED GROWERS AND MERCHANTS—

Sutton & Sons,  
The King's Seedsmen, Reading.  
Farm Seeds, Garden Seeds and Bulbs  
specially selected and packed for all parts of the  
World. Full Price Lists free on application.

## SHIP BISCUITS—

Walker, Harrison & Garthwaites, Limited,  
Phoenix Biscuit Works,  
Ratcliff Cross, London, E.

## SHOVELS AND SPADES—

The Hardy Patent Pick Co., Ltd., Sheffield.  
SLATES, SLATE SLABS, CISTERNS, &c., &c.  
Davies Bros., Portmadoc, N. Wales.  
Blue, Red and Green Roofing Slates, Slate  
Slabs, Urinals, Lavatories, Cisterns, &c.  
Home and Export. Telegrams "Seivad."

## SOAP MANUFACTURERS—

The United Alkali Co., Ltd., "Camden" Soap  
Works, Runcorn, Cheshire. All classes  
of Tallow, Bar, Brown, and Toilet Soaps.  
"Cashmere," "Acme" and other Brands.

## STEEL—

The Hardy Patent Pick Co., Ltd., Sheffield.

## STEEL PEN MAKER—

W. Mitchell, 44, Cannon-street, London,  
E.C., and Washington Works, Cumber-  
land-street, Birmingham.

## STRAW PLAIT & CHIP DYERS & BLEACHERS—

T. Lye and Sons, Luton, England.  
Large Warehouses for Free Storage of  
Dyed and Bleached Goods awaiting Custom-  
ers' disposal. Established 1850.

## SURGICAL INSTRUMENT MANUFACTURERS—

Down Bros.,  
21, St. Thomas's-street, London, S.E.  
Factory: King's Head Yard, Borough.  
Telegrams: Down, London. Telephone:  
965 Hop.

## TILE MANUFACTURERS—

Craven Dunnill & Co., Limited,  
Jackfield, R.S.O., Shropshire.  
Tiles of all kinds, Encaustic, Plain, Ena-  
melled, Glazed, Majolica, Printed, Painted,  
Lustre, Ceramic Mosaics, Constructional Fai-  
ence. London, 37, Maddox-street, W.

## TIN BOX MANUFACTURERS—

Barringer, Wallis & Manners, Ltd., Notts.  
Manufacturers of Decorated Tin Boxes and  
Canisters for Biscuits, Tea, Coffee, Tobacco,  
Salines, Patent Foods, &c., also Manufacturers  
of Tin Show Tablets for Advertisements.

## TOBACCO PIPE MANUFACTURERS—

Allen & Wright, 26, Foultry, London, E.C.;  
31, St. Mary Axe, E.C.;  
217, Piccadilly, London, W.  
Makers of finest quality only, Briar and  
Meerschaum Pipes. Brand "A. & W."  
Illustrated Catalogues, Post Free.

## TRUNK AND TRAVELLING BAG MANUFAC-

TURERS—  
John Pound & Co., 81-84, Leadenhall-  
street; 67, Piccadilly; 211, Regent-street;  
378, Strand; and 177-8, Tottenham  
Court-road, London.

The largest manufacturers of their kind.

## TYPEWRITERS—

Remington Standard. (New Model.)  
All kinds of Typewriter Supplies.  
Wyckoff, Seamans & Benedict,  
Proprietors, 100, Gracechurch-street,  
Telephone No. 2464 & 2854. London, E.C.

## VENTILATOR MANUFACTURERS—

James Howorth & Co.,  
Victoria Works, Farnworth, near Bolton;  
or Manchester, England.

## WALL PAPER MANUFACTURERS—

Jeffrey & Co.,  
Factory: 64, Essex-road, London, N.  
Show Rooms: 31, Mortimer-st., London, W.  
Highest Awards, including 9 Gold Medals.

## WEED KILLER—

Acme Chemical Co., Ltd.,  
Tonbridge, Kent, and Bolton, Lancs.  
The "Acme" Weed Killer permanently  
destroys Weeds and Scrubs growing upon  
walks, roads, &c., by one application.

## WEIGHING MACHINES—

Henry Pooley & Son, Ltd.,

11, Temple-street, Birmingham.

## WIRE ROPE AND ROPEWAYS—

Bullivant & Co., Limited,  
72, Mark-lane, London, E.C.  
Wire Ropes for all purposes. Aerial Rope-  
ways, Suspension Bridges, &c.

## WOOD BLOCK FLOORING—

Goddard & Sons,  
Patent Wood Block Flooring Works,  
Farnham, Surrey.

## WOOLLEN CLOTH MANUFACTURERS—

Apperly, Curtis & Co., Limited,  
Dudbridge Mills, Stroud, Glos.  
Vicunas, Serges, Overcoatings, Suitings,  
&c., &c. 21 Gold Medals and Highest Awards.



Dr.

MARCH, Cash Account.

Cr.

**All "Cash Account" pages  
February - December  
are BLANK.**



Dr.

## ANNUAL CASH SUMMARY.

Cr.

Balance from last year

January

February

March

April

May

June

July

August

September

October

November

December

Balance carried forward

Balance from last year

January

February

March

April

May

June

July

August

September

October

November

December

Balance carried forward



3 BLANK PAGES  
LIKE THIS ONE



# DR. J. COLLIS BROWNE'S CHLORODYNE.

ORIGINAL AND

ORIGINAL AND ONLY GENUINE.



ONLY GENUINE.

**COUGHS,  
COLDS,  
ASTHMA,  
BRONCHITIS.**

DR. J. COLLIS BROWNE'S CHLORODYNE.—Dr. J. C. BROWNE (late Army Medical Staff) DISCOVERED a REMEDY, to denote which he coined the word CHLORODYNE. Dr. Browne is the SOLE INVENTOR, and, as the composition of Chlorodyne cannot possibly be discovered by Analysis (organic substances defying elimination), and since the formula has never been published, it is evident that any statement to the effect that a compound is identical with Dr. Browne's Chlorodyne must be false.

This Caution is necessary, as many persons deceive purchasers by false representations.

DR. J. COLLIS BROWNE'S CHLORODYNE.—Vice-Chancellor Sir W. PAGE WOOD stated publicly in Court that Dr. J. COLLIS BROWNE was UNDOUBTEDLY the INVENTOR of CHLORODYNE, and that the whole story of the Defendant, Freeman, was deliberately untrue, and he regretted to say it had been sworn to.—See the Times, July 15th, 1864.

DR. J. COLLIS BROWNE'S CHLORODYNE is the

**GREAT SPECIFIC for  
CHOLERA,  
DYSENTERY,  
DIARRHŒA.**

GENERAL BOARD OF HEALTH, LONDON, REPORT that it ACTS as a CHARM, one dose generally sufficient.

Dr. GIBSON, Army Medical Staff, Calcutta, states:—TWO DOSES COMPLETELY CURED ME OF DIARRHŒA.

DR. J. COLLIS BROWNE'S CHLORODYNE is the TRUE PALLIATIVE in NEURALGIA, GOUT, CANCER, TOOTHACHE, RHEUMATISM.

DR. J. COLLIS BROWNE'S CHLORODYNE is a Liquid Medicine which assuages PAIN of EVERY KIND, affords a calm, refreshing sleep WITHOUT HEADACHE, and INVIGORATES the nervous system when exhausted.

DR. J. COLLIS BROWNE'S CHLORODYNE rapidly cuts short all attacks of EPILEPSY, SPASMS, COLIC, PALPITATION, HYSTERIA.

IMPORTANT CAUTION. The IMMENSE SALE of this REMEDY has given rise to many UNSCRUPULOUS IMITATIONS. Be careful to observe Trade Mark.

Of all Chemists, 1s. 11d., 2s. 9d., 4s. 6d.

SOLE MANUFACTURER,  
J. T. DAVENPORT,  
33, GREAT RUSSELL STREET, W.C.

PARIS, 1900.

HIGHEST POSSIBLE AWARD.

**JOSEPH GILLOTT'S**

The ONLY 'GRAND PRIX' PENS  
Exclusively Awarded for Steel Pens.

Nos. FOR BANKERS:—Barrel Pens, 225, 226, 262. Slip Pens, 332, 909, 287, 160, 404. In Fine, Medium, and Broad Points. The turned-up point, 1032. 6d. boxes of any No. 6d. boxes, Samples, 24 Slip or 7 Barrel Pens.

VICTORIA WORKS, BIRMINGHAM, ENGLAND.

**THE CANCER HOSPITAL (FREE),**  
Fulham Road, London, S.W.

THE only Special Hospital for poor persons afflicted with this fearful disease who are admitted FREE on their own application alone. Upwards of 100 Beds, of which a number are provided for the use of patients who may remain for Life. Out-Patients seen daily at Two o'clock, except Sundays.

Subscriptions and Donations urgently solicited.

Bankers: Messrs. COURTIS & Co., Strand, W.C.

FRED. W. HOWELL, Secretary.

**ACCIDENT  
INSURANCE  
COMPANY**

(Limited).

Accidents  
Disease  
Fidelity Guarantees  
Workmen's Compensation  
Plate Glass  
Burglary

Founded 1849. Claims paid, £1,000,000

Apply for Particulars and Rates for Insurance.

10, ST. SWITHIN'S LANE, LONDON, E.C.

THOS. POTTER, Manager and Secretary.

Established 1824.

**YORKSHIRE  
INSURANCE COMPANY.**

**FIRE! LIFE! ACCIDENT! BURGLARY!**

LIFE INSURANCES issued under specially advantageous Conditions and at minimum rates.

FIRE INSURANCES effected by the Company on the most moderate terms, according to nature of risk.

FARMING STOCK.—Special attention devoted to the interests of Farmers.

EMPLOYERS' LIABILITY.—Policies issued covering full Liability under The Workmen's Compensation Acts, 1897 and 1900; The Employers' Liability Act, 1880, and The Common Law.

PERSONAL ACCIDENT INSURANCE.—Policies issued conferring full benefits at moderate rates.

BURGLARY INSURANCE TRANSACTED.—Liberal Conditions, Low Rates.

HEAD OFFICE - YORK.

JAMES HAMILTON, Secretary and General Manager.

**BRITISH INDIA STEAM LINES.**

Departures from LONDON for

COLOMBO, MADRAS, & CALCUTTA Fortnightly.  
KURRACHEE & BOMBAY - - Three-Weekly.  
QUEENSLAND & JAVA PORTS Fortnightly.  
EAST AFRICA (via Aden) - - Four-Weekly.  
MAURITIUS (via Colombo) - - Four-Weekly.

Good Cuisine, Comfortable and Commodious Cabins.

Apply to—

GRAY, DAWES & Co., 23, Great Winchester St., LONDON, E.C., or

Craven House, Northumberland Avenue, W.C., Or to

GELLATLY, HANKEY & Co., Glasgow, Manchester, Liverpool & Antwerp.

**5 of the POINTS**

WHICH MAKE THE

**BLICKENSERFER**  
**Typewriter**

So great a favourite are:

ITS PORTABILITY.—It weighs only 6 lbs. without case, and but 10½ to 12 lbs. when packed for travelling.

ITS VISIBLE WRITING.—Which is visible letter by letter as it is typed, and remains readable till the sheet is finished.

ITS INTERCHANGEABLE TYPE.—Affording users the opportunity of a variety of types.

ITS BEAUTIFUL WORK.—Perhaps its greatest attraction. No ribbon to smear. Always a sharp, clean impression.

ITS SIMPLICITY.—Anyone can operate it, so easy is it.

THE PRICE IS FROM EIGHT GUINEAS. And List No. 46 tells you all about it.

Local References all over the Kingdom.



**The BLICKENSERFER Typewriter Co., NEWCASTLE-ON-TYNE.**

London Depot: 9, CHEAPSIDE.



# ROCK LIFE ASSURANCE COMPANY.

ESTABLISHED 1806.

## TRUSTEES:

WILFRID ARTHUR BEVAN, Esq.  
The Right Hon. ST. JOHN BRODRICK, M.P.

COL. ALFRED GEORGE LUCAS.  
SIR CUTHBERT EDGAR PECK, Bart.  
SIR CHARLES RUGGE-PRICE, Bart.

The Hon. CHARLES HEDLEY STRUTT, M.P.  
Lord EDMUND BERNARD TALBOT, M.P.

## WEALTH—SECURITY—STABILITY.

Paid in Claims upwards of - - - - - £12,000,000.

LIFE ASSURANCE—PENSIONS—SINKING FUNDS—LOW PREMIUM RATES FOR WITHOUT-PROFIT POLICIES.

WORKMEN'S COMPENSATION ACTS, 1897 & 1900.

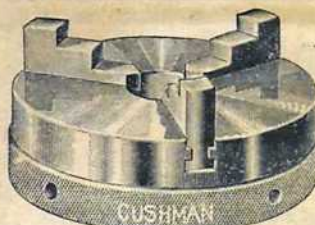
Employers' Liability—Personal Accident—Burglary—Fidelity Insurance.

Chief Office—15, NEW BRIDGE STREET, LONDON, E.C.

Applications for Agencies Invited.

GEORGE S. CRISFORD, Actuary.

**WHELPTON'S CURE PILLS**  
HEADACHE  
INDIGESTION  
CONSTIPATION  
BILE  
OF ALL CHEMISTS.  
Prices:  
7d. 1s. 6d.  
& 2s. 9d.



Joiners' & Cabinet Makers' Planes & Tools.

## HIGH-CLASS TOOLS FOR ALL TRADES.

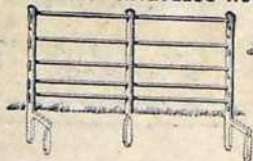
Our No. 10a Catalogue, which is fully illustrated, contains the most complete assortment of all the best and most up-to-date Tools, and should be of interest and value in every Workshop in the Universe.

A copy will be sent Post Free on mention of this advertisement.

**CHARLES NURSE & CO.,** Tool Specialists,  
182, 184 & 173, WALWORTH ROAD,  
LONDON, S.E.

**BAYLISS,  
JONES &  
BAYLISS'**  
LIMITED

"VICTORIA" RIVETLESS HURDLE.



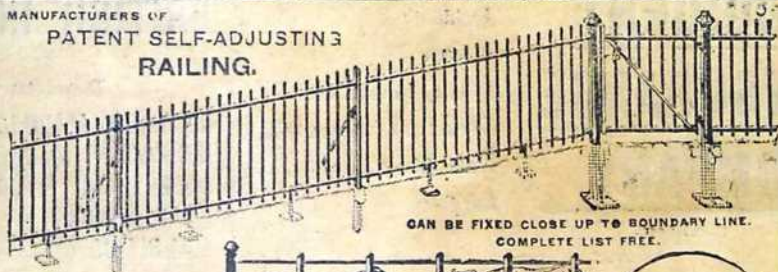
ABOUT  
200,000  
SOLD.

WROUGHT-IRON  
GATES.

(Numerous Designs.)

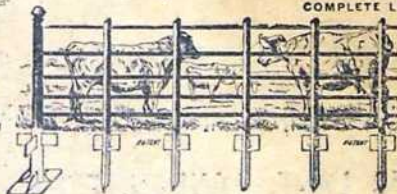


MANUFACTURERS OF  
PATENT SELF-ADJUSTING  
RAILING.



CAN BE FIXED CLOSE UP TO BOUNDARY LINE.  
COMPLETE LIST FREE.

CATTLE  
FENCING,  
&c.



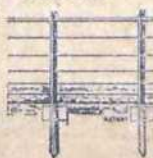
TREE GUARDS.  
TENNIS  
FENCING.



HURDLES  
&c.



PATENT  
WIRE  
FENCING.



IRON  
BARROWS.



LOW  
PRICES.

ILLUSTRATED CATALOGUE OF ALL KINDS OF HURDLES, FENCING, GATES, &c. FREE.  
**VICTORIA WORKS, WOLVERHAMPTON.**  
LONDON OFFICES AND SHOW ROOMS—139 & 141, CANNON STREET, E.C.



# SCOTTISH WIDOWS' FUND LIFE ASSURANCE SOCIETY

EDINBURGH—9, St. Andrew Square.

LONDON—28, Cornhill, and 5, Waterloo Place.

THE WHOLE FUNDS AND PROFITS BELONG TO THE POLICYHOLDERS, the latter being divided among them alone, and the result is that the Bonus Additions and other Financial Advantages accruing to their Policies have been unusually large, as clearly shown in the Tables in Prospectus relating practically to every existing Policy.

Funds, £16,500,000.

Revenue, £1,670,000.

## THE... COMPENSATION & GUARANTEE FUND LIMITED.

Head Office:  
149, LEADENHALL ST.  
LONDON, E.C.

Subscribed Capital - - £150,000  
Paid up " - - £30,000

WORKMEN'S COMPENSATION, and all kinds of ACCIDENT INSURANCE and FIDELITY GUARANTEES undertaken.

For dealing with Tramways, Light Railways, Motors, Drivers' and other Third Party Risks, the Company has exceptional facilities.

CONSIDERATION GIVEN TO ANY OTHER ASSESSABLE CONTINGENCY.

JOHN HENRY SCOTT, *Managing Director.*

## NORWICH UNION MUTUAL LIFE OFFICE.

CLAIMS PAID, OVER £22,000,000.

Results of Quinquennial Valuation, 1901:—

- (1) Reserves for Liabilities on 2½ per cent. basis.
- (2) Largest Bonus ever Declared by Society.

SPECIAL NEW TABLES WITH ATTRACTIVE OPTIONS.

Full Particulars and every information on application.

Head Office:—NORWICH.

London Office:

50, Fleet Street, E.C.

71 & 72, King William Street, City.

195, Piccadilly, W.

1, Victoria Street, S.W.

124, West End Lane, N.W.

10, Southwark Street, S.E.

and 168, Whitechapel Road, E.

## Mutual Assurance SCOTTISH EQUITABLE LIFE Assurance Society.

Established 1831

FUNDS . . . . . £4,708,190  
BONUS YEAR.

Seventeenth Division of Profits. Policies effected before 1st March, 1903, at full annual premiums will be entitled to one full year's bonus in the Quinquennial Division of Profits to be made as at that date.

Head Office:—28, ST. ANDREW SQUARE, EDINBURGH.

London Office:—19, KING WILLIAM STREET, E.C.

## SCOTTISH UNION AND NATIONAL INSURANCE COMPANY.

Established 1824.

CAPITAL - SIX MILLIONS STERLING.

Life Policies in force, Eleven Millions Sterling.

Funds exceed Five Millions Sterling.

**LIFE ASSURANCE.**—Under the LIFE ASSURANCE SYSTEM of this Company, the Assured obtain every privilege and advantage which experience has suggested as possible, added to the safety of dealing with a Company of over 75 YEARS' standing, possessing large ACCUMULATED FUNDS.

**FIRE INSURANCE.**—Almost all descriptions of Property Insured on the most favourable terms.

LONDON.

3, KING WILLIAM STREET, E.C.

GLASGOW.

150, WEST GEORGE STREET.

Head Office, 35, ST. ANDREW SQUARE, EDINBURGH.

## British Workman's and General Assurance Company, Limited.

ORDINARY & INDUSTRIAL BRANCHES.

Transactions:—

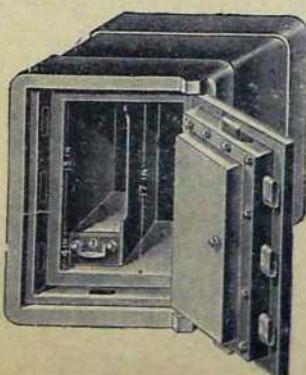
Whole Life Assurance. Endowment Assurance.  
Children's Endowments.

Annual Income ... .. £800,000.  
Claims Paid ... .. £3,200,000.  
Funds Increased (during the last 3 years) by £350,000.

Chief Offices:—

BROAD STREET CORNER, BIRMINGHAM.

## WHITFIELD'S



**SAFES**  
AND  
**STEEL**  
**DOORS.**

Works:—  
BIRMINGHAM.

11-12, St. Andrew's Hill  
LONDON, E.C.



The

# Remington

**YOU** cannot afford  
to do your writing  
in the old way!

AFFORDS

THE NEW  
WAY.

# Typewriter.

Telephone Nos. 5545 & 5546 Avenue.

100, Gracechurch Street, E.C.

263, Oxford Street, W. (West-End Branch).

## GEORGE SMYTHE & SON,

### Paper Makers and Contractors,

ST. BARTHOLOMEW HOUSE 90-93, FLEET STREET, LONDON.  
(Formerly of 46, Cannon Street, E.C.)

SUPERFINE, FINE, AND COMMON PRINTINGS.

ALSO  
FRICTION GLAZED AND SUPER CALENDERED PRINTING FOR PROCESS WORK.  
White and Tinted News in Webs and Sheets. Fine Art Papers.

**ENGINE-SIZED AND TUB-SIZED WRITING PAPERS.**

Azure Laid and Yellow Waves, and every Description of Papers for Account Books.

**ENGLISH AND FOREIGN TINTED WRITINGS AND PRINTINGS.**

Telephone: Holborn 1887.

Telegrams: "CULVERKEY, LONDON."

Also GLASGOW and PARIS.

Art Metal Work in Iron, Bronze and  
Brass.

IRON FENCING, GATES, ROOFS, &c.

Catalogues Free.

## HILL & SMITH

Art Metal Workers,

BRIERLEY HILL, IRONWORKS,

DUDLEY, ENGLAND.

THE MOST NUTRITIOUS.

# EPPS'S

GRATEFUL-COMFORTING.

# COCOA

BREAKFAST-SUPPER.

## NORTHERN ASSURANCE COMPANY.

ESTABLISHED 1836.

LONDON: 1, Moorgate Street, E.C.

ABERDEEN: 1, Union Terrace.

INCOME AND FUNDS (1901).

Fire Premiums	...	...	...	...	£852,000
Life Premiums	...	...	...	...	272,000
Interest	...	...	...	...	207,000
Accumulated Funds	...	...	...	...	£5,898,000