

Letts's
No. 31
INDIAN AND COLONIAL
ROUGH DIARY

WITH A WEEK IN AN OPENING,

FOR

1904

(Bissextile or Leap Year).



Price 1s. 6d., or with Blotting, 2s. 6d.

Interleaved Blotting with Cloth Boards, 4s. 6d.

An Edition giving more space (No. 42) is published at 3s. 1
CLOTH, Plain, 4s., Interleaved Blotting, 5s.



PUBLISHED FOR

Letts's Diaries Company, Limited,

BY

CASELL & COMPANY, Limited, London, Paris, New York and Melbourne.

OETZMANN & CO.,

HAMPSTEAD ROAD, LONDON, W.

60 & 61, GRAFTON ST., DUBLIN. 75, UNION ST., RYDE.

ENSURE ECONOMY WITH ELEGANCE
AND COMFORT IN FURNISHING

by consulting Oetzmann & Co.'s

ILLUSTRATED GUIDE TO HOUSE FURNISHING

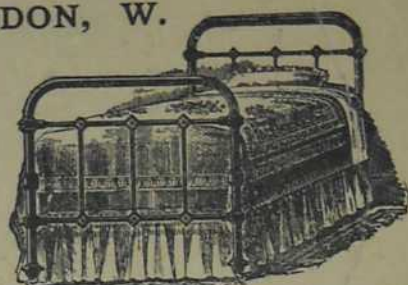
Gratis and Mail Free.



Box Ottoman Couch, spring stuffed and covered with cretonne, £1 3 6



Block Tin Oval Breakfast Dish, with cover and earthenware lining.
10 in., 7/6. 12 in., 10/6.



The "Cosmo" Brass-mounted Bedstead, complete with double-woven wire mattress, comfortable overlay mattress, bolster, and feather pillow.

3 ft. wide by 6 ft. 6 in. long.	21/-	Ditto, with superior quality bedding.	4/6 extra.
3 ft. 6 in. " " "	27/6	" " "	5/6 "
4 ft. " " "	37/6	" " "	6/6 "
4 ft. 6 in. " " "	45/-	" " "	7/6 "

NORWICH UNION

FIRE OFFICE.

FOUNDED 1797.

Head Office: SURREY STREET, NORWICH.

London Offices: 50, FLEET STREET, E.C.; 71 and 72, KING WILLIAM STREET, E.C.;
195, PICCADILLY, W.; 1, VICTORIA STREET, S.W.; 26, CHARLES STREET, ST. JAMES', S.W.;
and 81, EDGWARE ROAD, W.

PREMIUM INCOME	-	-	-	-	-	-	-	£1,076,260
LOSSES PAID	-	-	-	-	-	-	-	£17,270,000

Lowest Rates of Premium. Prompt and Liberal Settlement of Losses.

Prospectuses and every information can be obtained at the Chief Offices, Branches, and Agencies.

APPLICATIONS FOR AGENCIES INVITED.



Yost

New Model . . .

TYPEWRITER

. . . New Model.

Send for our
ILLUSTRATED BOOKLET
which gives full details.

CASH PRICE £23 LESS 5%.

Also supplied on Instalment Plan.

The "LIGHT-RUNNING YÖST," so termed because of the SMOOTHNESS, QUIETNESS and SWIFTNESS of its working, is the latest model of the well-known YÖST, famous for the clearness and neatness of its writing, consequent upon its types communicating direct with the paper. Many valuable improvements have been effected, and there are some features entirely new to writing machines.



THE **YÖST Typewriter Co., Ltd.,**
50, HOLBORN VIADUCT, LONDON.

SCOTTISH PROVIDENT INSTITUTION.

MUTUAL LIFE ASSURANCE WITH MODERATE PREMIUMS.

The Premiums do not as a rule exceed the non-profit rates of other Offices; nevertheless they secure right to participation in the Whole Surplus on a system peculiarly favourable to good lives.

The Surplus at last Septennial Investigation (31st December, 1901), was **£1,581,000.**

Over Sixty-six per cent. of the Policies which became claims by death during 1902 were entitled to Bonuses which, notwithstanding the lowness of the Premiums, were, on the average, equal to an addition of considerably over 50 per cent. to the Original Assurances.

THE ACCUMULATED FUNDS EXCEED £12,500,000.

London—17, KING WILLIAM STREET, E.C.

West End—17, PALL MALL, S.W.

Head Office—6, ST. ANDREW SQUARE, EDINBURGH.

THE LARGEST FIRE OFFICE IN THE WORLD.

FIRE

LIFE

ROYAL INSURANCE BUILDINGS,
1, NORTH JOHN STREET,
LIVERPOOL.



ROYAL INSURANCE BUILDINGS,
28, LOMBARD STREET,
LONDON.

OVER TOTAL FUNDS,
£12,000,000

OVER ANNUAL INCOME,
£3,900,000.

Absolute Security.

Moderate Rates of Premium.

Liberal Policy Conditions.

SUN FIRE OFFICE

HEAD OFFICE:

63, Threadneedle Street, London, E.C.

BRANCH OFFICES IN LONDON:

60, Charing Cross, S.W.

332, Oxford Street (corner of Vere Street), W.

40, Chancery Lane (Law Courts Branch), W.C.

42, Mincing Lane, E.C.

FUNDS IN HAND, **£2,278,640.**

Insurances accepted in all parts of the World.



THE STANDARD LIFE ASSURANCE COMPANY.

ESTABLISHED 1825.

REVENUE	- - - - -	£1,340,000.
BONUS DECLARED	- - - - -	£7,000,000.
ACCUMULATED FUNDS	- - - - -	£10,600,000.
CLAIMS PAID	- - - - -	£22,000,000.

BRANCH OFFICES & AGENCIES in THE BRITISH COLONIES, INDIA, and other countries abroad.

EDINBURGH: Head Office, 3, George Street.

LONDON: 83, King William Street, E.C.; and 3, Pall Mall East, S.W.

DUBLIN: 66, Upper Sackville Street.

THE LAW GUARANTEE AND TRUST SOCIETY, LIMITED.

Capital Fully Subscribed, £2,000,000.
Paid up, £200,000. Reserve Fund, £180,000.
FIDELITY GUARANTEES.
MORTGAGE INSURANCE.
DEBENTURE INSURANCE.
LICENSE INSURANCE.
CONTINGENCY INSURANCE (re Defects in Title, Lost Documents, Missing Beneficiaries, &c.).
TRUSTEESHIPS under Wills, Marriage Settlements, &c., and for Debenture Holders.
SINKING FUND and LEASEHOLD REDEMPTION POLICIES.
Head Office—49, CHANCERY LANE, LONDON, W.C.
City Office—56, MOORGATE STREET, E.C.

THE BRITISH LAW FIRE INSURANCE COMPANY, LIMITED,

5, LOTHBURY, LONDON, E.C.

(With Branches throughout the Kingdom.)

Subscribed Capital—ONE MILLION.

Paid-up Capital & Reserve—£160,000.

Gentlemen in a position to introduce Business are invited to undertake Agencies.



Security, £3,700,000.

Head Offices: 45, DALE STREET, LIVERPOOL.
73—76, KING WILLIAM STREET, LONDON, E.C.

Applications specially invited from Agents representing purely Life Companies.

Liberal Commission Allowed.

WESTERN ASSURANCE CO. Incorporated 1851.

Head Office — — TORONTO.

PAID-UP CAPITAL, £410,000. | TOTAL CASH ASSETS, £636,978.
PROFIT FOR YEAR 1902, £50,341.

FIRE. MARINE.

BRITISH AND FOREIGN OFFICES:
2, Change Alley, Cornhill, London, E.C.

BRANCH OFFICES:

100, King Street, Manchester. | 120, Edmund Street, Birmingham.
142, St. Vincent Street, Glasgow. | Foster's Chambers, Small Street, Bristol.
28, Mosley Street, Newcastle-on-Tyne. | 1, Tithebarn Street, Liverpool.
Mercantile Branch—12, Mark Lane, London, E.C.

FIRE AND MARINE INSURANCES AT HOME AND ABROAD GRANTED AT CURRENT RATES.
CLAIMS PROMPTLY AND LIBERALLY SETTLED.

Directors:

RT. HON. THE EARL OF ABERDEEN, G.C.M.G. (Chairman.)
RT. HON. SIR J. H. KENNAWAY, BART., C.B., M.P.
ALFRED COOPER, Esq. (Messrs. Grahams & Co.)

Applications for Agencies at Home and Foreign Towns invited.

W. B. MEIKLE, Manager.

TIME IS THE TEST OF ALL THINGS

and the ever increasing popularity of ENO'S 'FRUIT SALT,' which holds its own against all rivals, is the most genuine proof of its worth. It must needs be a good thing that can withstand the immense pressure of uprising competition, and yet defy comparison; small marvel, therefore, that with the flight of years,



ENO'S 'FRUIT SALT'

has become known far and wide for what it is worth, one of the MOST POTENT, SIMPLE, and AGREEABLE FACTORS in maintaining HEALTH.

IT IS THE BEST KNOWN REMEDY FOR

All Functional Derangements of the Liver,
Temporary Congestion arising
from Alcoholic Beverages, Errors in Diet,
Biliousness, Constipation, Skin Eruptions,
Boils, Feverish Cold, Influenza, Throat
Affections and Fevers of all kinds.

It assists the functions of the Liver, Bowels, Skin, and Kidneys, and thus Rectifies the Stomach and makes the Liver laugh with Joy, by Soothing and Natural Means.

The effect of Eno's 'Fruit Salt' on any Disordered and Feverish condition is Simply Marvellous. It is, in fact, Nature's Own Remedy, and an Unsurpassed One.

CAUTION.—Examine the Capsule and see that it is marked ENO'S 'FRUIT SALT.' Otherwise you have been imposed upon by a WORTHLESS Imitation.

Prepared only by J. C. ENO, Ltd., at the 'FRUIT SALT' WORKS, LONDON, S.E., by J. C. ENO'S Patent.

Letts's

INDIAN AND COLONIAL

DIARY AND ALMANAC

FOR

1904

(BISSEXTILE OR LEAP YEAR)

BEING THE FOURTH YEAR OF THE REIGN OF HIS MAJESTY KING EDWARD VII.—(Accession, January 22, 1901).

FOLIO SERIES.

No.						Plain.		Inter. Blotting.		Blotting Cloth.	
						s.	d.	s.	d.	s.	d.
No. 31	Week in opening	1	6	2	6	4	6
„ 32	Week on page (pages divided perpendicularly)				—		1	6	—	
„ 37	Week on page	cloth back	—		1	0	—	
„ 39	Week in opening	cloth back	—		1	6	—	
„ 41	One day on page	cloth back	5	0	—		8	0
„ „	One day on page	bound cloth	6	6	—		—	
„ 42	Two days on page	cloth back	3	0	—		5	0
„ „	Two days on page	bound cloth	4	0	—		—	
„ 48	Two days on page	cloth back	—		3	6	—	

PUBLISHED FOR

LETTS'S DIARIES COMPANY, LIMITED,

BY

CASSELL & COMPANY, LIMITED,

LONDON, PARIS, NEW YORK AND MELBOURNE.

[ALL RIGHTS RESERVED.]

Letts's Diaries can be obtained at all the principal Booksellers throughout the World.

For a Full Description whereby to obtain a Counterpart of this Diary, see back of Order Form.

Hazell, Watson & Viney Ltd., Printers, London & Aylesbury.

CALENDAR FOR 1904.

JANUARY, 1904.				FEBRUARY, 1904.				MARCH, 1904.			
FIRST MONTH—THIRTY-ONE DAYS.				SECOND MONTH—TWENTY-NINE DAYS.				THIRD MONTH—THIRTY-ONE DAYS.			
M. W. Y.	SUNDAYS, &c.	High Water at Lon. Bridge.		M. W. Y.	SUNDAYS, &c.	High Water at Lon. Bridge.		M. W. Y.	SUNDAYS, &c.	High Water at Lon. Bridge.	
1 F.	1 Circumcision. New	—	0 13	1 M.	32	1 13	1 39	1 Tu.	61 St. David	0 58	1 23
2 S.	2 Year's Day	0 39	1 4	2 Tu.	33 Purification Vir. Mary	2 5	2 29	2 W.	62	1 48	2 11
3 S.	3 2 after Christmas	1 29	1 54	3 W.	34	2 51	3 16	3 Th.	63	2 35	2 57
4 M.	4	2 17	2 42	4 Th.	35	3 39	4 1	4 F.	64	3 19	3 42
5 Tu.	5	3 5	3 29	5 F.	36	4 24	4 48	5 S.	65	4 3	4 25
6 W.	6 Epiphany	3 53	4 18	6 S.	37	5 10	5 31	6 S.	66 3 in Lent	4 47	5 7
7 Th.	7	4 42	5 6	7 S.	38 Sexagesima Sunday	5 54	6 16	7 M.	67	5 27	5 45
8 F.	8	5 29	5 53	8 M.	39	6 39	7 2	8 Tu.	68	6 7	6 30
9 S.	9	6 17	6 43	9 Tu.	40	7 29	7 58	9 W.	69	6 55	7 22
10 S.	10 1 after Epiphany	7 9	7 36	10 W.	41	8 30	9 6	10 Th.	70	7 51	8 25
11 M.	11	8 6	8 38	11 Th.	42	9 49	10 31	11 F.	71	9 4	9 50
12 Tu.	12	9 13	9 52	12 F.	43	11 10	11 47	12 S.	72	10 33	11 13
13 W.	13	10 30	11 5	13 S.	44	—	0 19	13 S.	73 4 in Lent	11 48	—
14 Th.	14	11 49	—	14 S.	45 Quinquagesima Sun.	0 47	1 11	14 M.	74	0 19	0 45
15 F.	15	0 12	0 41	15 M.	46	1 32	1 53	15 Tu.	75	1 6	1 20
16 S.	16	1 4	1 28	16 Tu.	47 Shrove Tuesday	2 11	2 27	16 W.	76	1 45	2 3
17 S.	17 2 after Epiphany	1 50	2 10	17 W.	48 Ash Wednesday. Lent begins	2 43	2 58	17 Th.	77 St. Patrick	2 18	2 33
18 M.	18	2 28	2 46	18 Th.	49	3 14	3 29	18 F.	78 Mohammedan Year 1322 begins	2 47	3 2
19 Tu.	19	3 1	3 17	19 F.	50	3 44	3 59	19 S.	79 5 in Lent	3 16	3 32
20 W.	20	3 34	3 51	20 S.	51	4 16	4 31	20 S.	80	3 46	4 3
21 Th.	21	4 7	4 24	21 S.	52 1 in Lent. Ember Wk.	4 46	5 1	21 M.	81	4 20	4 36
22 F.	22 King's Accession, 1901	4 40	4 55	22 M.	53	5 16	5 32	22 Tu.	82	4 52	5 9
23 S.	23	5 12	5 28	23 Tu.	54	5 50	6 10	23 W.	83	5 26	5 45
24 S.	24 3 after Epiphany. Proc. [King Edward VII.]	5 44	6 2	24 W.	55 St. Matthias, Ap. Ember Day	6 31	6 55	24 Th.	84	6 8	6 33
25 M.	25 (25) Con. of St. Paul	6 23	6 43	25 Th.	56	7 23	7 53	25 F.	85 Annunciation. Lady Day	7 0	7 31
26 Tu.	26	7 6	7 33	26 F.	57 Ember Day	8 27	9 8	26 S.	86	8 6	8 45
27 W.	27	8 1	8 32	27 S.	58 Ember Day	9 55	10 39	27 S.	87 Palm Sunday	9 31	10 17
28 Th.	28	9 9	9 49	28 S.	59 2 in Lent	11 19	11 57	28 M.	88	10 59	11 34
29 F.	29	10 29	11 6	29 M.	60	—	0 29	29 Tu.	89	—	0 9
30 S.	30	11 42	—					30 W.	90	0 37	1 2
31 S.	31 Septuagesima Sunday	0 17	0 47					31 Th.	91 Maundy Thursday	1 28	1 51

APRIL, 1904.				MAY, 1904.				JUNE, 1904.			
FOURTH MONTH—THIRTY DAYS.				FIFTH MONTH—THIRTY-ONE DAYS.				SIXTH MONTH—THIRTY DAYS.			
M. W. Y.	SUNDAYS, &c.	High Water at Lon. Bridge.		M. W. Y.	SUNDAYS, &c.	High Water at Lon. Bridge.		M. W. Y.	SUNDAYS, &c.	High Water at Lon. Bridge.	
1 F.	92 Good Friday	2 13	2 35	1 S.	122 4 after Easter. SS.	2 35	2 56	1 W.	153	3 40	3 59
2 S.	93 Easter Even	2 56	3 16	2 M.	123 [Philip & James, App.]	3 16	3 37	2 Th.	154 Corpus Christi	4 18	4 37
3 S.	94 Easter Day	3 39	4 0	3 Tu.	124	3 57	4 19	3 F.	155 Prince of Wales born, [1865]	4 55	5 13
4 M.	95 Easter Monday	4 20	4 40	4 W.	125	4 39	4 57	4 S.	156	5 34	5 55
5 Tu.	96 Easter Tuesday	5 1	5 20	5 Th.	126	5 17	5 38	5 S.	157 1 after Trinity	6 17	6 41
6 W.	97	5 41	6 2	6 F.	127	6 0	6 23	6 M.	158	7 6	7 32
7 Th.	98	6 25	6 50	7 S.	128	6 48	7 14	7 Tu.	159	8 0	8 30
8 F.	99	7 18	7 48	8 S.	129 Rogation Sunday	7 45	8 17	8 W.	160	9 3	9 38
9 S.	100	8 24	9 3	9 M.	130 Rogation Day	8 52	9 32	9 Th.	161	10 11	10 41
10 S.	101 1 after Easter. Low Sunday	9 46	10 28	10 Tu.	131 Rogation Day	10 9	10 43	10 F.	162	11 11	11 39
11 M.	102	11 3	11 36	11 W.	132 Rogation Day	11 12	11 41	11 S.	163 St. Barnabas, Ap.	—	0 4
12 Tu.	103	—	0 4	12 Th.	133 Ascension Day	—	0 5	12 S.	164 2 after Trinity	0 28	0 50
13 W.	104	0 30	0 50	13 F.	134	0 28	0 47	13 M.	165	1 11	1 32
14 Th.	105	1 8	1 27	14 S.	135	1 6	1 26	14 Tu.	166	1 55	2 16
15 F.	106	1 45	2 1	15 S.	136 after Ascension	1 45	2 1	15 W.	167	2 35	2 57
16 S.	107	2 15	2 30	16 M.	137	2 19	2 37	16 Th.	168	3 19	3 42
17 S.	108 2 after Easter	2 47	3 4	17 Tu.	138	2 56	3 15	17 F.	169	4 5	4 29
18 M.	109	3 20	3 37	18 W.	139	3 34	3 55	18 S.	170	4 52	5 15
19 Tu.	110	3 55	4 14	19 Th.	140	4 17	4 37	19 S.	171 3 after Trinity	5 40	6 7
20 W.	111	4 33	4 51	20 F.	141	4 59	5 23	20 M.	172	6 33	7 3
21 Th.	112	5 10	5 31	21 S.	142	5 47	6 14	21 Tu.	173	7 32	8 2
22 F.	113	5 55	6 21	22 S.	143 Whit Sun. Ember Wk.	6 42	7 13	22 W.	174	8 35	9 11
23 S.	114 St. George	6 49	7 21	23 M.	144 Whitsun Monday	7 47	8 22	23 Th.	175	9 45	10 18
24 S.	115 3 after Easter	7 55	8 34	24 Tu.	145 Whitsun Tues. Queen	9 0	9 36	24 F.	176 St. John, Baptist	10 52	11 25
25 M.	116 St. Mark, Evan.	9 17	10 0	25 W.	146 Ember D. [Vic. b., 1819]	10 10	10 45	25 S.	177	11 57	—
26 Tu.	117	10 38	11 13	26 Th.	147	11 19	11 51	26 S.	178 4 after Trinity	0 25	0 51
27 W.	118	11 46	—	27 F.	148 Ember Day	—	0 19	27 M.	179	1 10	1 40
28 Th.	119	0 14	0 39	28 S.	149 Ember Day	0 42	1 8	28 Tu.	180	2 3	2 24
29 F.	120	1 2	1 27	29 S.	150 Trinity Sunday	1 32	1 55	29 W.	181 St. Peter, Ap.	2 44	3 3
30 S.	121	1 52	2 13	31 Tu.	152	2 18	2 38	30 Th.	182	3 22	3 41

CHRONOLOGICAL NOTES.
Golden Number 5 Dom. Letters C.B.
Epact ... 13 Rom. Indiction 2
Solar Cycle ... 9 Julian Period 6617

ECLIPSES.
Of the SUN, Two; MOON, None.
I. MARCH 17. Annular Eclipse. Invisible in England. The line of Annular Eclipse passes over Cape Delgado, the North of Sumatra, Malay, Siam, between Luzon and Formosa. Visible as a Partial Eclipse in Eastern Africa, the Indian Ocean, Asia (except Turkey and Western Siberia), and the Western Pacific. In South Africa, except West of Cape Colony, the Sun rises eclipsed.

Eclipse Long. Lat.
Begins 2h 37m a.m. 53° E., 13° S.
Ends 8h 45m a.m. 146° E., 22° N.

ECLIPSES—contd.

At Begins Ends
Mauritius 6h 30m a.m., 9h 4m a.m.
Madras 8h 53m a.m., 10h 24m p.m.
Hongkong 4h 47m p.m., 4h 8m p.m.
II. SEPTEMBER 9. Total Eclipse. Visible only in the South Pacific and South America (except the North and Eastern part of Brazil).

Eclipse Long. Lat.
Begins 6h 8m p.m., 176° E., 11° N.
Ends 11h 21m p.m., 83° W., 23° S.

INDIAN GOVERNORS.

*INDIA—Viceroy and Governor-General—The Rt. Hon. Lord Curzon, G.M.S.I., G.M.I.E. (Rs. 20,000).
Madras—Governor—Lord Amphilthill, G.C.I.E. (Rs. 10,000).

*Salaries are (excluding allowances) stated in Rupees per mensem.

INDIAN GOVERNORS—contd.

Bombay—Governor—Rt. Hon. Lord Northcote, G.C.I.E., C.B. (Rs. 10,000).
Bengal—Lieutenant-Governor—Sir A. H. L. Fraser, K.C.S.I. (Rs. 8,333).
Punjab—Lieutenant-Governor—Sir C. M. Rivaz, K.C.S.I. (Rs. 8,333).
United Provinces of Agra and Oudh—Lieutenant-Governor—Sir J. D. La Touche, K.C.S.I. (Rs. 8,333).
Central Prov.—Chief Commissioner—Acting—The Hon. J. P. Hewett, C.S.I., C.I.E. (Rs. 4,166).
Burmah—Lieutenant-Governor—Sir H. S. Barnes, K.C.S.I., K.C.V.O. (Rs. 8,333).
Assam—Chief Commissioner—The Hon. J. B. Fuller, C.S.I., C.I.E. (Rs. 4,166).

CALENDAR FOR 1904.

JULY, 1904.				AUGUST, 1904.				SEPTEMBER, 1904.			
SEVENTH MONTH—THIRTY-ONE DAYS.				EIGHTH MONTH—THIRTY-ONE DAYS.				NINTH MONTH—THIRTY DAYS.			
M. W. Y.	SUNDAYS, &c.	High Water at Lon. Bridge.		M. W. Y.	SUNDAYS, &c.	High Water at Lon. Bridge.		M. W. Y.	SUNDAYS, &c.	High Water at Lon. Bridge.	
1 F. 183		4 0 4 19		1 M. 214		4 45 5 1		1 Th. 245		5 18 5 36	
2 S. 184		4 37 4 54		2 Tu. 215		5 17 5 33		2 F. 246		5 56 6 16	
3 S. 185	5 after Trinity	5 12 5 20		3 W. 216		5 51 6 11		3 S. 247		6 39 7 4	
4 M. 186	Declaration of American [Independence]	5 48 6 8		4 Th. 217		6 33 6 54		4 S. 248	14 after Trinity	7 32 8 6	
5 Tu. 187		6 28 6 50		5 F. 218		7 17 7 43		5 M. 249		8 43 9 26	
6 W. 188		7 14 7 38		6 S. 219		8 12 8 45		6 Tu. 250		10 10 10 50	
7 Th. 189		8 4 8 33		7 S. 220	10 after Trinity	9 23 10 3		7 W. 251		11 28 —	
8 F. 190		9 8 9 43		8 M. 221		10 40 11 17		8 Th. 252		0 2 0 30	
9 S. 191		10 16 10 48		9 Tu. 222	Coronation of King [Edward VII., 1902]	11 52 —		9 F. 253		0 55 1 21	
10 S. 192	6 after Trinity	11 20 11 49		10 W. 223		0 22 0 48		10 S. 254	Jewish Year 5665 beg.	1 45 2 7	
11 M. 193		— 0 18		11 Th. 224		1 13 1 39		11 S. 255	15 after Trinity	2 30 2 53	
12 Tu. 194		0 43 1 8		12 F. 225		2 4 2 27		12 M. 256		3 16 3 38	
13 W. 195		1 32 1 56		13 S. 226		2 50 3 14		13 Tu. 257		4 1 4 24	
14 Th. 196		2 19 2 43		14 S. 227	11 after Trinity	3 37 3 59		14 W. 258		4 44 5 5	
15 F. 197		3 5 3 29		15 M. 228		4 23 4 44		15 Th. 259		5 26 5 49	
16 S. 198		3 52 4 17		16 Tu. 229		5 8 5 30		16 F. 260		6 13 6 37	
17 S. 199	7 after Trinity	4 42 5 6		17 W. 230		5 54 6 18		17 S. 261		7 5 7 35	
18 M. 200		5 29 5 53		18 Th. 231		6 42 7 7		18 S. 262	16 after Trinity. Ember	8 8 8 46	
19 Tu. 201		6 18 6 43		19 F. 232		7 35 8 6		19 M. 263	[Week	9 51 10 14	
20 W. 202		7 9 7 37		20 S. 233		8 39 9 18		20 Tu. 264		10 53 11 29	
21 Th. 203		8 6 8 38		21 S. 234	12 after Trinity	10 0 10 41		21 W. 265	St. Matthew, Ap.	— 0 1	
22 F. 204		9 14 9 51		22 M. 235		11 17 11 52		22 Th. 266	[Ember Day	0 28 0 50	
23 S. 205		10 27 11 3		23 Tu. 236		— 0 23		23 F. 267	Ember Day	1 9 1 28	
24 S. 206	8 after Trinity	11 36 —		24 W. 237	St. Bartholomew, Ap.	0 50 1 13		24 S. 268	Ember Day	1 45 2 2	
25 M. 207	St. James, Ap.	0 10 0 38		25 Th. 238		1 33 1 53		25 S. 269	17 after Trinity	2 16 2 30	
26 Tu. 208		1 3 1 28		26 F. 239		2 10 2 26		26 M. 270		2 46 3 0	
27 W. 209		1 49 2 10		27 S. 240		2 43 2 59		27 Tu. 271		3 16 3 31	
28 Th. 210		2 29 2 46		28 S. 241	13 after Trinity	3 14 3 30		28 W. 272		3 47 4 3	
29 F. 211		3 4 3 21		29 M. 242		3 46 4 1		29 Th. 273	St. Michael & All [Angels]	4 19 4 34	
30 S. 212		3 38 3 55		30 Tu. 243		4 16 4 32		30 F. 274		4 51 5 6	
31 S. 213	9 after Trinity	4 12 4 29		31 W. 244		4 47 5 2					

OCTOBER, 1904.				NOVEMBER, 1904.				DECEMBER, 1904.			
TENTH MONTH—THIRTY-ONE DAYS.				ELEVENTH MONTH—THIRTY DAYS.				TWELFTH MONTH—THIRTY-ONE DAYS.			
M. W. Y.	SUNDAYS, &c.	High Water at Lon. Bridge.		M. W. Y.	SUNDAYS, &c.	High Water at Lon. Bridge.		M. W. Y.	SUNDAYS, &c.	High Water at Lon. Bridge.	
1 S. 275		5 25 5 47		1 Tu. 306	All Saints' Day	6 48 7 21		1 Th. 336	Queen Alexandra born, [1844]	7 43 8 19	
2 S. 276	18 after Trinity	6 11 6 37		2 W. 307		8 0 8 41		2 F. 337		8 57 9 34	
3 M. 277		7 5 7 39		3 Th. 308		9 25 10 4		3 S. 338		10 12 10 47	
4 Tu. 278		8 16 9 0		4 F. 309		10 40 11 16		4 S. 339	2 in Advent	11 20 11 50	
5 W. 279		9 46 10 29		5 S. 310		11 47 —		5 M. 340		— 0 17	
6 Th. 280		11 5 11 41		6 S. 311	23 after Trinity	0 14 0 39		6 Tu. 341		0 43 1 6	
7 F. 281		— 0 10		7 M. 312		1 4 1 29		7 W. 342		1 32 1 55	
8 S. 282		0 37 1 1		8 Tu. 313		1 49 2 11		8 Th. 343		2 17 2 38	
9 S. 283	19 after Trinity	1 24 1 46		9 W. 314	King Ed. VII. born, 1841. [Ramadan (Turk. Lent) [begins]	2 32 2 54		9 F. 344		3 1 3 21	
10 M. 284		2 8 2 31		10 Th. 315		3 16 3 37		10 S. 345		3 42 4 2	
11 Tu. 285		2 54 3 16		11 F. 316		3 59 4 19		11 S. 346	3 in Advent. Emb. Wk.	4 22 4 42	
12 W. 286		3 37 3 59		12 S. 317		4 39 5 0		12 M. 347		5 1 5 20	
13 Th. 287		4 20 4 41		13 S. 318	24 after Trinity	5 21 5 43		13 Tu. 348		5 42 6 4	
14 F. 288		5 1 5 22		14 M. 319		6 7 6 33		14 W. 349	Ember Day	6 27 6 49	
15 S. 289		5 44 6 8		15 Tu. 320		6 59 7 29		15 Th. 350		7 14 7 41	
16 S. 290	20 after Trinity	6 34 7 3		16 W. 321		8 0 8 37		16 F. 351	Ember Day	8 10 8 42	
17 M. 291		7 34 8 9		17 Th. 322		9 18 9 50		17 S. 352	Ember Day	9 17 9 53	
18 Tu. 292	St. Luke, Evan.	8 50 9 35		18 F. 323		10 31 11 2		18 S. 353	4 in Advent	10 26 10 57	
19 W. 293		10 14 10 50		19 S. 324		11 30 11 55		19 M. 354		11 26 11 54	
20 Th. 294		11 23 11 52		20 S. 325	25 after Trinity	— 0 18		20 Tu. 355		— 0 18	
21 F. 295		— 0 16		21 M. 326		0 37 0 55		21 W. 356	St. Thomas, Ap.	0 40 1 1	
22 S. 296		0 38 0 57		22 Tu. 327		1 15 1 34		22 Th. 357		1 21 1 42	
23 S. 297	21 after Trinity	1 15 1 32		23 W. 328		1 51 2 7		23 F. 358		2 2 2 23	
24 M. 298		1 47 2 2		24 Th. 329		2 23 2 41		24 S. 359		2 43 3 3	
25 Tu. 299		2 17 2 32		25 F. 330		2 58 3 16		25 S. 360	Christmas Day	3 24 3 45	
26 W. 300		2 48 3 5		26 S. 331		3 36 3 55		26 M. 361	St. Stephen, M. Boxing [Day	4 6 4 28	
27 Th. 301		3 20 3 37		27 S. 332	1 in Advent	4 16 4 36		27 Tu. 362	St. John, Evan.	4 50 5 13	
28 F. 302	SS. Simon & Jude, App.	3 54 4 11		28 M. 333		4 58 5 20		28 W. 363	Innocents' Day	5 37 6 3	
29 S. 303		4 29 4 47		29 Tu. 334		5 44 6 10		29 Th. 364		6 30 6 56	
30 S. 304	22 after Trinity	5 7 5 29		30 W. 335	St. Andrew, Ap.	6 30 7 0		30 F. 365		7 26 7 55	
31 M. 305		5 52 6 18						31 S. 366		8 27 9 2	

TIDAL CONSTANTS.

Note.—To find the approximate time of High Water at each of the following places for any day during 1904, add or subtract from the time of High Water at London Bridge given in the side column in the Calendar.

	h. m.
Bombay	sub. 2 23
Calcutta	add 0 4
Shanghai	sub. 0 28
Rangoon Town	add 2 38
" River Entrance	" 1 34
Hongkong	sub. 4 58
Singapore	" 3 23
Goa	" 3 19
Point de Galle	add 0 5
Karachi	sub. 3 39
Madras	" 4 57
Port Natal	add 2 28

TIDAL CONSTANTS—contd.

	h. m.
Malta	add 1 32
Gibraltar	sub. 0 11
Table Bay	add 1 28
Port Elizabeth	" 1 40
Yokohama	" 3 32
Penang	sub. 1 58
Valparaiso	" 4 26
Buenos Ayres	add 4 2
Monte Video	" 0 32

EXAMPLES.—Required the time of afternoon High Water at Calcutta and Singapore on June 1st, 1904.

Time of afternoon High Water in Calendar is 3h 59m; the time at Calcutta is 0h 4m added to 3h 59m=4h 3m; and time at Singapore is 3h 23m subtracted from 3h 59m=0h 36m.

MEASURES OF DISTANCE IN OTHER COUNTRIES WITH EQUIVALENTS IN ENGLISH MILES.

	Eng. Stat. M.
Arabian Mile	1.2193
Bengal Coss	1.1363
Brazilian League	3.8360
Burman Dain	2.4306
Chinese Li or Mile	0.3458
Greek Stadium	0.1136
Jewish (ancient) Mile	1.3802
Lithuanian Mile	5.5641
Neapolitan Miglio	1.1470
Persian Parasang	3.4522
Sardinian Miglio	1.3835
Siamese Roeng	2.3886
Spanish Legua	4.2152
Turkish Berri	1.0383

GENERAL INFORMATION, &c.

THE ROYAL FAMILY.

Date of Birth and Age in 1904.

King Edward VII.	Nov. 9, 1841	63
Queen Alexandra	Dec. 1, 1844	60
Prince of Wales	June 3, 1865	39

(Married July 6, 1893, to Princess Victoria Mary of Teck, born May 26, 1867.)

Issue—

Edward Albert	June 23, 1894	10
Albert Frederick	Dec. 14, 1895	9
Victoria Alexandra	April 25, 1897	7
Henry William	March 31, 1900	4
George Edward	Dec. 20, 1902	2

Princess Louise Victoria	Feb. 20, 1867	37
--------------------------	---------------	----

(Married July 27, 1889, to the Duke of Fife), 2 children.

Princess Victoria	July 6, 1868	36
Princess Maud Charlotte	Nov. 26, 1869	35

(Married July 27, 1896, to Prince Charles of Denmark), 1 child.

Princess Helena	May 25, 1846	58
Princess Louise	March 18, 1848	56
Duke of Connaught	May 1, 1850	54
Princess Beatrice	April 14, 1857	47

THE BRITISH EMPIRE.

COLONIAL GOVERNORS.

AUSTRALASIAN.

GOVERNOR-GEN. OF THE COMMONWEALTH OF AUSTRALIA—The Rt. Hon. Lord Tennyson, G.C.M.G. (£10,000).
BRITISH NEW GUINEA—†
FIJI ISLANDS AND WESTERN PACIFIC—Sir Henry M. Jackson, K.C.M.G. (£3,000).
NEW SOUTH WALES—Vice-Admiral Sir H. H. Rawson, K.C.B. (£5,000).
NEW ZEALAND—The Rt. Hon. Earl of Ranfurly, G.C.M.G. (£3,000).
QUEENSLAND—Major-Gen. Sir H. C. Chermiside, R.E., G.C.M.G., C.B. (£5,000).
SOUTH AUSTRALIA—Sir G. Ruthven Le Hunte, K.C.M.G. (£4,000).
TASMANIA—Sir A. E. Havelock, G.C.S.I., G.C.M.G., G.C.I.E. (£3,500).
VICTORIA—Sir George Sydenham Clarke, K.C.M.G. (£5,000).
WESTERN AUSTRALIA—Admiral Sir F. G. D. Bedford, G.C.B. (£4,000).

AFRICAN.

HIGH COMMISSIONER FOR SOUTH AFRICA AND GOVERNOR OF THE TRANSVAAL AND ORANGE RIVER COLONY—The Rt. Hon. Viscount Milner, G.C.B., G.C.M.G. (£3,000 and £8,000).
CAPE OF GOOD HOPE—The Hon. Sir W. F. Hely-Hutchinson, G.C.M.G. (£8,000).
THE TRANSVAAL—Lieut.-Governor, The Hon. Sir A. Lawley, K.C.M.G. (£4,500, with £1,500 allowance).
ORANGE RIVER COLONY—Lieutenant-Governor, Major Sir H. J. Goold-Adams, K.C.M.G., C.B. (£3,500).
BECHUANALAND PROTECTORATE—R. C. Williams, Esq., C.M.G. (£1,000).
BASUTOLAND—H. C. Sloley, Esq. (£1,500).
NATAL—Col. Sir H. E. McCallum, K.C.M.G. (£5,000).
ST. HELENA—Lieut.-Col. H. L. Gallwey, C.M.G., D.S.O. (£800).
SIERRA LEONE—Sir C. A. King Harman, K.C.M.G. (£2,000).
GAMBIA—Sir G. C. Denton, K.C.M.G. (£1,500).
GOLD COAST—Major Sir M. Nathan, R.E., K.C.M.G. (£3,000).
LAGOS—Sir W. MacGregor, M.D., K.C.M.G., C.B. (£2,500).
N. NIGERIA—Brig.-Gen. Sir F. J. D. Lugard, K.C.M.G., C.B. (£2,500).
S. NIGERIA—Sir R. D. Rayment Moor, K.C.M.G. (£2,500).

NORTH AMERICAN.

CANADA—The Rt. Hon. The Earl of Minto, G.C.M.G. (£50,000).
PROVINCES OF CANADA:—
ONTARIO—W. Mortimer Clark, K.C. (£10,000).
QUEBEC—Sir L. A. Jetté, K.C.M.G. (£10,000).

† New appointment pending at time of going to press.

THE BRITISH EMPIRE—contd.

NOVA SCOTIA—The Hon. A. G. Jones, Esq. (£9,000).
NEW BRUNSWICK—A. R. McClellan, Esq. (£9,000).
MANITOBA—Sir D. H. McMillan, K.C.M.G. (£10,000).
BRITISH COLUMBIA—The Hon. Sir H. G. J. de Lotbinière, K.C.M.G. (£9,000).
PRINCE EDWARD ISLAND—P. A. McIntyre, Esq., M.D. (£7,000).
NORTH-WEST TERRITORIES—A. E. Forget, Esq. (£7,000).
NEWFOUNDLAND—Sir Cavendish Boyle, K.C.M.G. (£10,000).

WEST INDIAN.

JAMAICA—Sir A. W. L. Hemming, G.C.M.G. (£5,000).
BRITISH HONDURAS—Sir D. Wilson, K.C.M.G. (£8,748).
BRITISH GUIANA—Sir J. A. Swettenham, K.C.M.G. (£5,000).
BAHAMA ISLANDS—Sir Gilbert T. Carter, K.C.M.G. (£2,000).
TRINIDAD AND TOBAGO—Sir C. A. Moloney, K.C.M.G. (£5,000).
BARBADOS—Sir F. M. Hodgson, K.C.M.G. (£2,500).
Windward Islands:—
GRENADA—Sir R. B. Llewellyn, K.C.M.G. (£2,500).
ST. VINCENT—E. J. Cameron, Esq. (£800).
ST. LUCIA—Sir G. Melville, K.C.M.G. (£1,000).
Leeward Islands:—
ANTIGUA—Sir G. Strickland, K.C.M.G. (£2,600).
ST. CHRISTOPHER NEVIS—C. T. Cox, C.M.G. (£900).
DOMINICA—H. H. J. Bell, C.M.G. (£900).
MONTserrat—F. H. Watkins (£400).
VIRGIN ISLANDS—N. G. Cookman, (£250).
BERMUDA ISLANDS—Lieut.-Gen. Sir H. Le Guay Geary, K.C.B. (£2,946).

MEDITERRANEAN.

GIBRALTAR—Field Marshal Sir George White, V.C., G.C.B., G.C.S.I., G.C.I.E., G.C.M.G., G.C.V.O. (£5,000).
MALTA—Gen. Sir Mansfield Clarke, Bt., G.C.B., G.C.V.O. (£5,000).
CYPRUS—Sir W. F. Haynes Smith, K.C.M.G. (£3,000).

EASTERN.

CEYLON—The Rt. Hon. Sir J. West Ridgeway, G.C.M.G., K.C.B., K.C.S.I. (Rs. 80,000).
HONGKONG—Sir H. A. Blake, G.C.M.G. (£5,000).
MAURITIUS—Sir Charles Bruce, G.C.M.G. (£5,000).
SEYCHELLES ISLANDS—E. B. Sweet Escott, C.M.G. (Rs. 12,500).
STRAITS SETTLEMENTS—Sir F. Swettenham, K.C.M.G. (£5,000).
LABUAN—E. W. Birch, Esq., C.M.G. (£1,150).
WEI-HAI-WEI—J. H. S. Lockhart, C.M.G. (£1,150).

MISCELLANEOUS.

FALKLAND ISLANDS—W. Grey-Wilson, C.M.G. (£1,200).
JERSEY—Lieutenant-Governor—Major-Gen. H. R. Abadie, C.B. (£1,700).
GUERNSEY—Major-Gen. B. B. D. Campbell, C.V.O., C.B. (£1,700).
ISLE OF MAN—The Rt. Hon. Lord Raglan (£1,800).

THE CALENDARS.

The Jewish is in accordance with the system arranged A.D. 358. The Calendar dates from the Creation, which is fixed as 3760 years and 3 months before the beginning of the Christian Era; the year is Luni-solar.

The Mohammedan, or era of the Hejira, dates from the day after Mahomet's flight from Mecca, which occurred on the night of July 15, 622 A.D. The months are Lunar. The Fasli year was derived from a combination of the Hejira and Samvat

THE CALENDARS—contd.

years by the order of Akbar; it is Luni-solar. The Bengali year seems also to have been related at one time to the Hejira, but the fact of its being Solar made it lose 11 days each year.

The Samvat era dates from 57 A.C., and is Luni-solar. The months are divided into two fortnights—*sudi* or bright and *badi* or dark. Each fortnight contains 15 tithis, which furnish the dates of the civil days given in our calendars.

JEWISH CALENDAR.

1904.	5664.
Jan. 18 ...	Sebat 1
Feb. 17 ...	Adar 1
" 29 Fast of Esther ...	" 13
Mar. 1 Purim ...	" 14
" 2 Shushan Purim ...	" 15
" 17 ...	Nisan 1
" 31 Fest. of Passover ...	" 15
April 1 ...	" 2nd Day " 16
" 6 ...	" 7th Day " 21
" 7 ...	" 8th " 22
" 16 ...	" Yiar 1
May 3 Fest. 33rd of Omer ...	" 18
" 15 ...	" Sivan 1
" 20 Pentecost, 1st Day ...	" 6
" 21 ...	" 2nd " 7
June 14 ...	" Tamuz 1
" 30 Fast of Tamuz ...	" 17
July 13 ...	" Ab 1
" 21 Fast of Ab ...	" 9
Aug. 12 ...	" Elul 1
Sep. 10 New Year 5665 ...	Tisri 1
" 11 ...	" 2nd Day " 2
" 12 Fast of Guedaliah ...	" 3
" 19 Day of Atonement ...	" 10
" 24 Feast of Tabernacles ...	" 15
" 25 ...	" 2nd Day " 16
" 30 Hosana Raba ...	" 21
Oct. 1 Feast of the 8th Day ...	" 22
" 2 Rejoicing of the Law ...	" 23
" 10 ...	" Heshvan 1
Nov. 9 ...	" Kislev 1
Dec. 3 Dedication of Temple ...	" 25
" 9 ...	" Tebet 1
" 18 Fast Siege of Jeru. ...	" 10

MOHAMMEDAN CALENDAR.

January	1904.	1321.	Dulkaada 1
February	18	Dulheggia 1
March	18 ...	1322	Muharram 1
April	17	Saphar 1
May	16	Rabia I. 1
June	15	Rabia II. 1
July	14	Jomada I. 1
August	13	Jomada II. 1
September	11	Rajab 1
October	11	Shaaban 1
November	9	Ramadan 1
December	9	Shawall 1

FASLI (N. W. INDIA).

January	1904	1311	Pous 28
"	4	Magha 1
February	2	Phalguna 1
March	3	Chaitra 1
April	1	Vaisakha 1
"	30	Jyaistha 1
May	30	" 1
June	28	Ashada 1
July	28	Shravana 1
August	26	Bhadra 1
September	25 ...	1312	Asvina 1
October	25	Kartika 1
November	24	Margha 1
December	23	Pous 1

BENGALI.

January	1904	1310	Pous 17
"	15	Magha 1
February	13	Phalguna 1
March	14	Chaitra 1
April	13 ...	1311	Vaisakha 1
May	14	Jyaistha 1
June	15	Ashada 1
July	16	Shravana 1
August	17	Bhadra 1
September	17	Asvina 1
October	17	Kartika 1
November	16	Margha 1
December	16	Pous 1

GENERAL INFORMATION, &c.

SAMVAT CALENDAR FOR 1904.

Day, 1904.	January 1900	February 1900	March 1900-01	April 1901	May 1901	June 1901	July 1901	August 1901	September 1901	October 1901	November 1901	December 1901
1	Pausa 13 sudi	15 sudi	14 sudi	1 badi	2 badi	3 badi	4 badi	5 badi	6 badi	7 badi	8 badi	9 badi
2	14	1 badi	15	2	3	4	5 c	6	7	8	9	10
3	15	2	1 B badi	3	4	5	6	7	8	9	10	11
4	1 badi	3	3	4	5	6	7	8	9	10	11	12
5	2	4	4	5	6	7	8	9	10	11	12	13
6	3	5	5	6	7	8	9	10	11	12	13	14
7	4	6	6	7	8	9	10	11	12	13	14	15
8	5	7	7	8	9 c m b	10	11	12	13	14	Kartika 1 sudi	Marg. 1 sudi
9	6	8	8	9	10	11	12	13	14	15	2	3
10	7	9	9	10	11	12	13	14	15	16	3	4
11	8	10	10	11	12	13	14	15	16	17	4	5
12	9	11	11	12	13	14	15	16	17	18	5	6
13	10	12	12	13	14	15	16	17	18	19	6	7
14	11	13	13	14	15	16	17	18	19	20	7	8
15	12	14	14 c m	15	16	17	18	19	20	21	8	9
16	13	15	15	16	17	18	19	20	21	22	9	10
17	14	16	16	17	18	19	20	21	22	23	10	11
18	15	17	17	18	19	20	21	22	23	24	11	12
19	16	18	18	19	20	21	22	23	24	25	12	13
20	17	19	19	20	21	22	23	24	25	26	13	14
21	18	20	20	21	22	23	24	25	26	27	14	15
22	19	21	21	22	23	24	25	26	27	28	15	16
23	20	22	22	23	24	25	26	27	28	29	16	17
24	21	23	23	24	25	26	27	28	29	30	17	18
25	22	24	24	25	26	27	28	29	30	31	18	19
26	23	25	25	26	27	28	29	30	31		19	20
27	24	26	26	27	28	29	30	31			20	21
28	25	27	27	28	29	30	31				21	22
29	26	28	28	29	30	31					22	23
30	27	29	29	30	31						23	24
31	28	30	30	31							24	25

Note.—The Calendar is computed for Lanka, the month being inserted only to sudi, so that for places where badi precedes, it may be written in. All tithis are the same at Calcutta, Madras and Bombay, except those followed by initial letter of the place. B signifies that 1 is to be added to the tithi in table to obtain that for Bombay; a, m, or b 1 to be subtracted from the table to obtain that for Calcutta, Madras or Bombay respectively.

TABLE OF EXCHANGE, No. 1—RUPEES INTO POUNDS STERLING.

For values of Rupees from 1s. 3d. to 1s. 3½d.

Rupees.	1s. 3d.	1s. 3½d.	1s. 3d.	1s. 3½d.	1s. 3d.	1s. 3½d.
1	£ s. d.	£ s. d.	£ s. d.	£ s. d.	£ s. d.	£ s. d.
10	0 1 3½	0 1 3	0 1 3	0 1 3	0 1 3	0 1 3
20	0 2 7	0 2 6	0 2 6	0 2 6	0 2 6	0 2 6
30	0 4 1	0 4 0	0 4 0	0 4 0	0 4 0	0 4 0
40	0 5 5	0 5 4	0 5 4	0 5 4	0 5 4	0 5 4
50	0 6 9	0 6 8	0 6 8	0 6 8	0 6 8	0 6 8
60	0 8 3	0 8 2	0 8 2	0 8 2	0 8 2	0 8 2
70	0 9 7	0 9 6	0 9 6	0 9 6	0 9 6	0 9 6
80	1 1 1	1 1 0	1 1 0	1 1 0	1 1 0	1 1 0
90	1 2 5	1 2 4	1 2 4	1 2 4	1 2 4	1 2 4
100	1 3 9	1 3 8	1 3 8	1 3 8	1 3 8	1 3 8
110	1 5 3	1 5 2	1 5 2	1 5 2	1 5 2	1 5 2
120	1 6 7	1 6 6	1 6 6	1 6 6	1 6 6	1 6 6
130	1 8 1	1 8 0	1 8 0	1 8 0	1 8 0	1 8 0
140	1 9 5	1 9 4	1 9 4	1 9 4	1 9 4	1 9 4
150	2 0 9	2 0 8	2 0 8	2 0 8	2 0 8	2 0 8
160	2 2 3	2 2 2	2 2 2	2 2 2	2 2 2	2 2 2
170	2 3 7	2 3 6	2 3 6	2 3 6	2 3 6	2 3 6
180	2 5 1	2 5 0	2 5 0	2 5 0	2 5 0	2 5 0
190	2 6 5	2 6 4	2 6 4	2 6 4	2 6 4	2 6 4
200	2 7 9	2 7 8	2 7 8	2 7 8	2 7 8	2 7 8
210	2 9 3	2 9 2	2 9 2	2 9 2	2 9 2	2 9 2
220	3 0 7	3 0 6	3 0 6	3 0 6	3 0 6	3 0 6
230	3 2 1	3 2 0	3 2 0	3 2 0	3 2 0	3 2 0
240	3 3 5	3 3 4	3 3 4	3 3 4	3 3 4	3 3 4
250	3 4 9	3 4 8	3 4 8	3 4 8	3 4 8	3 4 8
260	3 6 3	3 6 2	3 6 2	3 6 2	3 6 2	3 6 2
270	3 7 7	3 7 6	3 7 6	3 7 6	3 7 6	3 7 6
280	3 9 1	3 9 0	3 9 0	3 9 0	3 9 0	3 9 0
290	4 0 5	4 0 4	4 0 4	4 0 4	4 0 4	4 0 4
300	4 1 9	4 1 8	4 1 8	4 1 8	4 1 8	4 1 8
310	4 3 3	4 3 2	4 3 2	4 3 2	4 3 2	4 3 2
320	4 4 7	4 4 6	4 4 6	4 4 6	4 4 6	4 4 6
330	4 6 1	4 6 0	4 6 0	4 6 0	4 6 0	4 6 0
340	4 7 5	4 7 4	4 7 4	4 7 4	4 7 4	4 7 4
350	4 8 9	4 8 8	4 8 8	4 8 8	4 8 8	4 8 8
360	5 0 3	5 0 2	5 0 2	5 0 2	5 0 2	5 0 2
370	5 1 7	5 1 6	5 1 6	5 1 6	5 1 6	5 1 6
380	5 3 1	5 3 0	5 3 0	5 3 0	5 3 0	5 3 0
390	5 4 5	5 4 4	5 4 4	5 4 4	5 4 4	5 4 4
400	5 5 9	5 5 8	5 5 8	5 5 8	5 5 8	5 5 8
410	5 7 3	5 7 2	5 7 2	5 7 2	5 7 2	5 7 2
420	5 8 7	5 8 6	5 8 6	5 8 6	5 8 6	5 8 6
430	6 0 1	6 0 0	6 0 0	6 0 0	6 0 0	6 0 0
440	6 1 5	6 1 4	6 1 4	6 1 4	6 1 4	6 1 4
450	6 2 9	6 2 8	6 2 8	6 2 8	6 2 8	6 2 8
460	6 4 3	6 4 2	6 4 2	6 4 2	6 4 2	6 4 2
470	6 5 7	6 5 6	6 5 6	6 5 6	6 5 6	6 5 6
480	6 7 1	6 7 0	6 7 0	6 7 0	6 7 0	6 7 0
490	6 8 5	6 8 4	6 8 4	6 8 4	6 8 4	6 8 4
500	6 9 9	6 9 8	6 9 8	6 9 8	6 9 8	6 9 8
510	7 1 3	7 1 2	7 1 2	7 1 2	7 1 2	7 1 2
520	7 2 7	7 2 6	7 2 6	7 2 6	7 2 6	7 2 6
530	7 4 1	7 4 0	7 4 0	7 4 0	7 4 0	7 4 0
540	7 5 5	7 5 4	7 5 4	7 5 4	7 5 4	7 5 4
550	7 6 9	7 6 8	7 6 8	7 6 8	7 6 8	7 6 8
560	7 8 3	7 8 2	7 8 2	7 8 2	7 8 2	7 8 2
570	7 9 7	7 9 6	7 9 6	7 9 6	7 9 6	7 9 6
580	8 1 1	8 1 0	8 1 0	8 1 0	8 1 0	8 1 0
590	8 2 5	8 2 4	8 2 4	8 2 4	8 2 4	8 2 4
600	8 3 9	8 3 8	8 3 8	8 3 8	8 3 8	8 3 8
610	8 5 3	8 5 2	8 5 2	8 5 2	8 5 2	8 5 2
620	8 6 7	8 6 6	8 6 6	8 6 6	8 6 6	8 6 6
630	8 8 1	8 8 0	8 8 0	8 8 0	8 8 0	8 8 0
640	8 9 5	8 9 4	8 9 4	8 9 4	8 9 4	8 9 4
650	9 0 9	9 0 8	9 0 8	9 0 8	9 0 8	9 0 8
660	9 2 3	9 2 2	9 2 2	9 2 2	9 2 2	9 2 2
670	9 3 7	9 3 6	9 3 6	9 3 6	9 3 6	9 3 6
680	9 5 1	9 5 0	9 5 0	9 5 0	9 5 0	9 5 0
690	9 6 5	9 6 4	9 6 4	9 6 4	9 6 4	9 6 4
700	9 7 9	9 7 8	9 7 8	9 7 8	9 7 8	9 7 8
710	9 9 3	9 9 2	9 9 2	9 9 2	9 9 2	9 9 2
720	10 7	10 6	10 6	10 6	10 6	10 6
730	10 21	10 20	10 20	10 20	10 20	10 20
740	11 5	11 4	11 4	11 4	11 4	11 4
750	11 19	11 18	11 18	11 18	11 18	11 18
760	12 3	12 2	12 2	12 2	12 2	12 2
770	12 17	12 16	12 16	12 16	12 16	12 16
780	13 1	13 0	13 0	13 0	13 0	13 0
790	13 15	13 14	13 14	13 14	13 14	13 14
800	14 3	14 2	14 2	14 2	14 2	14 2
810	14 17	14 16	14 16	14 16	14 16	14 16
820	15 5	15 4	15 4	15 4	15 4	15 4
830	15 19	15 18	15 18	15 18	15 18	15 18
840	16 3	16 2	16 2	16 2	16 2	16 2
850	16 17	16 16	16 16	16 16	16 16	16 16
860	17 1	17 0	17 0	17 0	17 0	17 0
870	17 15	17 14	17 14	17 14	17 14	17 14
880	18 3	18 2	18 2	18 2	18 2	18 2
890	18 17	18 16	18 16	18 16	18 16	18 16
900	19 1	19 0	19 0	19 0	19 0	19 0
910	19 15	19 14	19 14	19 14	19 14	19 14
920	20 3	20 2	20 2	20 2	20 2	20 2
930	20 17	20 16	20 16	20 16	20 16	20 16
940	21 5	21 4	21 4	21 4	21 4	21 4
950	21 19	21 18	21 18	21 18	21 18	21 18
960	22 3	22 2	22 2	22 2	22 2	22 2
970	22 17	22 16	22 16	22 16	22 16	22 16
980	23 1	23 0	23 0	23 0	23 0	23 0
990	23 15	23 14	23 14	23 14	23 14	23 14
1,000	24 3	24 2	24 2	24 2	24 2	24 2

For values of Rupees from 1s. 3½d. to 1s. 4d.

Rupees.	1s. 3½d.	1s. 3½d.	1s. 3½d.	1s. 3½d.	1s. 3½d.	1s. 3½d.	1s. 3½d.
	£ s. d.	£ s. d.	£ s. d.	£ s. d.	£ s. d.	£ s. d.	£ s. d.
1	0 1 3½	0 1 3½	0 1 3½	0 1 3½	0 1 4	0 1 4	0 1 4
3	0 3 11½	0 3 11½	0 3 11½	0 4 0	0 4 0	0 4 0	0 4 0
5	0 6 7½	0 6 7½	0 6 7½	0 6 8	0 6 8	0 6 8	0 6 8
10	0 13 2½	0 13 3½	0 13 3½	0 13 4	0 13 4½	0 13 4½	0 13 4½
20	0 6 5½	1 0 6½	1 0 6½	1 6 8	1 0 8½	1 0 8½	1 0 8½
30	1 19 8½	1 19 10	1 19 11½	2 0 0	2 0 0	2 0 0	2 0 0
40	2 12 11½	2 13 1½	2 13 2½	2 13 4	2 3 0 ½	2 3 0 ½	2 3 0 ½
50	3 6 1½	3 6 4½	3 6 6½	3 6 8	3 6 9½	3 6 9½	3 6 9½
60	3 19 4½	3 19 8½	3 19 10	4 0 0	4 0 0	4 0 0	4 0 0
70	4 12 7½	4 12 11½	4 12 13½	4 13 4	4 13 6	4 13 6	4 13 6
80	5 5 10	5 6	5 6 ½	5 6 8	5 6 10½	5 6 10½	5 6 10½
90	6 13 1½	6 13 9½	6 13 11½	6 13 4	6 13 7	6 13 7	6 13 7
100	6 19 0	6 19 4	6 19 8½	6 19 4	6 19 11½	6 19 11½	6 19 11½
250	16 10 1½	16 12 9½	16 12 11½	16 13 4	16 13 11½	16 13 11½	16 13 11½
400	26 9	26 11 3	26 11 3	26 13 4	26 14 4½	26 15 5	26 15 5
500	33 1 5½	33 4 0½	33 5 4½	33 6 8	33 7 11½	33 9 3½	33 9 3½
750	49 13 2½	49 16 1	49 18 0	50 0 0	50 1 11½	50 3 10½	50 3 10½
1000	66 3 11	66 8 1½	66 10 8½	66 13 4	66 15 11½	66 18	66 18

GENERAL INFORMATION, &c.

INDIAN INLAND POSTAGE RATES.

Post Cards.—Single, $\frac{1}{4}$ anna; reply, $\frac{3}{4}$ anna. **Letters.**—Not exc. $\frac{3}{4}$ tola, $\frac{1}{2}$ anna; exc. $\frac{3}{4}$ tola but not exc. $1\frac{1}{4}$ tola, 1 anna; for every add. $\frac{3}{4}$ tola or fraction, 1 anna. **Packets, Publications of all kinds, Newspapers, Books and Patterns.**—Not exc. 10 tolas, $\frac{3}{4}$ anna; for every add. 10 tolas or fraction, $\frac{3}{4}$ anna. **Registered Newspapers.**—Not exc. 4 tolas, $\frac{1}{4}$ anna; not exc. 20 tolas, $\frac{3}{4}$ anna; for every add. 20 tolas or fraction, $\frac{3}{4}$ anna. **Parcels.**—Not exc. 20 tolas, 2 annas; exc. 20 tolas but not exc. 40 tolas, 4 annas; for every add. 40 tolas or fraction up to 440 tolas, 2 annas. Exc. 440 tolas but not exc. 480 tolas, 3 rupees; for every add. 40 tolas or fraction, up to 2,000 tolas, 4 annas. **Parcels weighing more than 440 tolas, and not more than 25 seers (2,000 tolas), limit of weight, must be registered.**

Commission on Ordinary Inland Money Orders.—On any sum not exc. 5 rupees, 1 anna; exc. 5 rupees, but not exc. 10 rupees, 2 annas; exc. 10 rupees but not exc. 25 rupees, 4 annas; exc. 25 rupees, 4 annas for each complete sum of 25 rupees, and 4 annas for the remainder, provided that, if the remainder does not exc. 10 rupees, the charge for it is only 2 annas. The value of a single Money Order may not exc. 600 rupees.

Telegraphic Money Orders, Inland.—On any sum not exc. 25 rupees, the fee is, 1 rupee 4 annas. On every additional 25 rupees (or fraction) up to 150 rupees, 4 annas. On every additional 50 rupees (or fraction) above 150 rupees and up to 600 rupees, 8 annas; including cost of telegram.

Money Order expressed in Indian currency may be drawn on—British East Africa Protectorate, British North Borneo and Labuan, Ceylon, Corea (certain places), Formosa (certain places), German East Africa, Hongkong (British Offices), Japan, Japanese Agencies in China, Mauritius, Sarawak, Seychelles, Straits Settlements, Zanzibar, Portuguese India (*Goa and Daman*), Chamba State, Gwalior State, Jhind State, Nabha State, Patiala State.

Limit of value, 150 rupees. Inland rates of commission apply to these Orders.

Telegraphic Money Orders expressed in Indian currency may also be drawn on Ceylon. Limit of value is 150 rupees. The rates of commission are 4 annas higher in each case than the rates applicable to Inland Telegraphic Money Orders, except as regards sums not exc. 10 rupees, on which the commission is 1 rupee 6 annas.

Registration Fee.—For each Letter, Post Card, Book or Pattern Packet, or Parcel to be registered, 2 annas.

Acknowledgment Charge.—1 anna (in *stamps* for registered articles, and *cash* for ordinary registered parcels).

Insurance.—Registered letters, value-payable registered letters, registered parcels and value-payable registered parcels may be insured up to the value of 500 rupees, in branch offices, and up to 2,000 rupees in other offices; when the value insured does not exceed 50 rupees, 2 annas; 100 rupees, 4 annas; every add. 100 rupees, or fraction thereof, 4 annas.

Value-Payable.—**FEEs.**—On any sum specified for recovery.—The same rates of commission as for ordinary Inland Money Orders.

FOREIGN POSTAGE RATES.

Post Cards.—Single, 1 anna; reply, 2 annas. **Printed Papers** (including newspapers and books).—Each packet, per 2 ozs., $\frac{1}{2}$ anna. **Business Papers** (Legal and Commercial Documents).—Each packet not exc. 10 ozs., 2½ annas; per 2 ozs. add., $\frac{1}{2}$ anna. **Samples.**—Each packet not exc. 4 ozs., 1 anna; per 2 ozs. add. up to 12 oz., $\frac{1}{2}$ anna.

The postage on **Letters** for the United Kingdom and the British Possessions in the following list is 1 anna for each half ounce or part of that weight:—Ascension, Bahamas, Barbadoes, Bermuda, British Central Africa Protectorate, British East Africa Protectorate, British Guiana, British Honduras, British North Borneo, Canada, Cape Colony, Cayman Islands, Cyprus, Falkland Islands, Fiji, Gambia, Gibraltar, Gold Coast Colony, Hongkong (with agencies at Shanghai, Liu Kung Tau, Hankow, Ningpo, Foochow, Amoy, Swatow, Canton and Hoihow), Jamaica, Johore, Labuan, Lagos, Leeward Islands (*viz.*, Antigua, Dominica, Montserrat, Nevis, St. Kitts and Virgin Islands), Malta, Mauritius, Natal, Newfoundland, New Zealand [including Cook or Hervey Islands, Suwarrow Islands and the Islands of Palmerston (Avarua), Savage (Niue), Danger (Pukapuka), Rakaanga, Manabiki, and Penrhyn (Tongareva)], Nigeria (Northern), Nigeria (Southern), Orange River Colony, Protected Malay States of Negri Sembilan, Pahang, Perak and Selangor; Sarawak, St. Helena, Seychelles, Sierra Leone, Straits Settlements, Tobago, Transvaal, Trinidad, Turks' Islands, Uganda, Windward Islands (*viz.*, Grenada, the Grenadines, St. Lucia and St. Vincent), Zanzibar.

All other countries 2½ annas for each ½ oz. or part of that weight.

Note.—Indian Inland Rates are, however, charged to Ceylon and Portuguese India, also Aden, French possessions in India, and Indian post offices in Turkish Arabia and Persian Gulf.

Foreign Parcel Post.—Parcels can be sent to most parts of the world. Particulars will be found in the Indian Postal Guide. Parcels must be securely fastened and must be accompanied by a Customs Declaration, obtainable free, stating its contents and value. Parcels for United Kingdom are divided into two classes; (1) not exc. 11 lbs. in weight, which are sent as mails to the British Post Office; and (2) exc. 11 lbs., but not exc. 50 lbs., which are forwarded by the P. & O. Company. (39 tolax=1 lb. for foreign parcels.)

Rates by British Post Office.

For a parcel to the United Kingdom										Via Gibraltar		Overland	
										Rs.	A.	Rs.	A.
Not exc. 1 lb.										0	12	2	4
Exc. 1 lb., but not exc. 2 lbs.										1	4	2	4
11	2	11	19	3	11	11	1	12	2	4			
11	3	11	11	7	11	11	2	10	3	0			
11	7	11	11	11	11	11	3	12	4	8			

FOREIGN POSTAGE RATES—contd.

Rates by P. & O. Co.

For each lb. or fraction of a lb. (up to 50 lbs.) ... 8 annas
Limits of size:—6 ft. in girth and length combined, or $3\frac{1}{2}$ ft. in length.

Money Order Commission.—For a Sterling Money Order not exc. £2, 6 annas; £5, 12 annas; £7, 1 rupee 2 annas; £10, 1 rupee 8 annas; £12, 1 rupee 14 annas; £15, 2 rupees 4 annas; £17, 2 rupees 10 annas; £20, 3 rupees. The maximum amount of a single order to the United Kingdom is £10.

TELEGRAPH RATES.

(1.) Telegrams to Europe.

To United Kingdom and Europe generally, except Russia and Turkey. All words in addresses, except the name of the office from which a telegram is sent, are counted when computing the charges:—From any office in India or Burma, *via* Suez or Teheran, per word, 1 rupee, 14 annas; from any office in India, *via* Turkey, per word, 2 rupees, 11 annas.

(2.) Approximate Tariff of Charges per Word for Foreign Messages.

(Subject to variation through exchange.)

The charges given are from Offices in India. From Offices in Burma, add 2 annas a word, except to Australia.

	Rs.	As.		Rs.	As.
ASIA, East of India—			Sierra Leone <i>Via</i> Suez ..	4	13
Amoy, Foochow <i>Via</i> Madras }	1	13	Zanzibar <i>Via</i> Bombay & Aden ..	2	13
Shanghai, Hongkong }			Br. E. Africa <i>Via</i> „ ..	3	1
Canton, Macao,			NORTH AMERICA—		
Wampoo ..	2	0	Canada <i>Via</i> Teheran or Suez ..	1	1
Kansu, Peking, Kirin ..	2	0	British Columbia „ ..	3	1
Japan ..	3	7	New York State „ ..	2	12
ASIA, other places—			United States „ ..	3	10
Aden and Perim <i>Via</i> Bombay	2	1			
Russia, Asiatic, }			SOUTH AMERICA—		
all places } .. Suez ..	2	3	Argentina Republic, <i>Via</i> Teheran	5	0
Turkey in Asia ..	2	3	Paraguay, Uruguay } or Suez.		
Cyprus ..	2	6	British Guiana ..	12	1
AFRICA and Islands—			Brazil ..	4	14
Cape Colony, Natal, } <i>Via</i> Bombay	2	10	Bolivia, Chili ..	6	4
Orange River Col- } ..					
ony, Transvaal } ..			AUSTRALIA—		
Offices of B.S. Africa Co.: ..			New South Wales <i>Via</i> Madras	1	14
Southern Rhodesia ..	3	12	Queensland ..	1	14
Northern Rhodesia ..	3	15	South & West Australia ..	1	14
Egypt—Alexandria <i>Via</i> Suez	2	8	Victoria ..	1	14
Madagascar ..	2	4	Tasmania ..	1	14
Mauritius <i>Via</i> Bombay & Aden	3	9	New Zealand ..	1	14
Mombassa ..	2	13			

(3.) Inland Telegrams between any two stations in India and Burma.

No charge for the address and sender's name.

Class of Message			First 8 words or groups of 5 figures.	Each add. word or group of 5 figures.
			Rs. As.	Rs. As.
1	DEFERRED	0 8	0 1
2	ORDINARY	1 0	0 2
3	URGENT	2 0	0 4

A Reply to a Telegram may be prepaid by the sender up to a maximum of 2 rupees. 1 *Deferred* Telegrams are sent when the lines are clear of *Urgent* and *Ordinary* Telegrams, and are delivered between daybreak and 9 p.m. (local time). 2 *Ordinary* Telegrams are sent after *Urgent* Telegrams, and are delivered between daybreak and 9 p.m. (local time). 3 *Urgent* Telegrams receive instant transmission, and in cases of emergency can be sent from any office at any time.

Telegrams to Ceylon.—From any office in India, per word, 3 annas; from any office in Burma, per word, 4 annas 6 pie.

PHASES OF THE MOON, 1904 (CALCUTTA).

● New Moon; ☾ First Quarter; ○ Full Moon; ☾ Last Quarter.

January.			February.			March.			April.		
3.	11h 41m a.m.	1.	10h 26m p.m.	2.	8h 42m a.m.	7.	11h 47m p.m.				
10.	3h 3m a.m.	8.	3h 50m p.m.	9.	6h 54m a.m.	16.	3h 47m a.m.				
17.	9h 40m p.m.	16.	4h 58m p.m.	17.	11h 33m a.m.	23.	10h 48m a.m.				
26.	2h 34m a.m.	24.	5h 2m p.m.	25.	3h 30m a.m.	30.	4h 30m a.m.				
				31.	6h 38m p.m.						
May.			June.			July.			August.		
7.	5h 44m p.m.	6.	11h 46m a.m.	6.	4h 48m a.m.	4.	7h 56m p.m.				
14.	4h 52m p.m.	13.	3h 4m a.m.	13.	11h 28m a.m.	11.	6h 5m p.m.				
22.	4h 42m p.m.	20.	9h 4m p.m.	20.	11h 42m a.m.	18.	10h 50m a.m.				
29.	2h 48m p.m.	28.	2h 7m a.m.	27.	3h 53m p.m.	26.	6h 55m a.m.				
September.			October.			November.			December.		
3.	9h 52m a.m.	2.	7h 42m p.m.	1.	3h 7m a.m.	7.	9h 40m a.m.				
10.	9h 36m a.m.	9.	11h 18m a.m.	7.	9h 31m p.m.	15.	4h 0m a.m.				
16.	9h 6m p.m.	16.	11h 48m a.m.	15.	8h 29m a.m.	22.	11h 54m p.m.				
24.	11h 43m p.m.	24.	4h 42m p.m.	23.	9h 55m a.m.	29.	9h 39m p.m.				
				30.	1h 31m p.m.						

* Local time at Bombay, 1h 2m earlier; Kurrahee, 1h 25m earlier; Madras, 32m earlier; Simla, 45m earlier; Rangoon, 31m later; Singapore, 1h 2m later; Colombo, 34m earlier; Peking, 1h 53m later; Teheran, 2h 28m earlier; Yokohama, 3h 25m later.

INTEREST TABLE.

FROM 5 TO 12 PER CENT. ON RUPEES 100.

Calculated for 1 Year, 1 Month (Calendar), 1 Week, and 1 Day (365 Days to Year), the Decimat Fraction of a Pie for the Day being shown for the Day.

Per cent.	1 Day.		1 Week.		1 Month.		1 Year.	
	RS.	A.	RS.	P.	RS.	P.	RS.	P.
5	0	0	0	6	0	6	5	0
6	0	0	0	10	0	8	0	0
7	0	0	0	1	0	9	7	0
8	0	0	0	2	0	10	8	0
9	0	0	0	2	0	11	9	0
10	0	0	0	7	0	13	4	10
11	0	0	0	3	0	14	8	11
12	0	0	0	3	0	15	0	12

GENERAL INFORMATION, &c.

INDIAN STAMP DUTIES.

	Rs.	A.
Acknowledgment of Debt ex. Rs. 20	0	1
Affidavit or Declaration	1	0
Agreement or Memo. of Agreement, if relating to sale of a Government security, or share in an incorporated company or other body corporate, or Bill of Exchange	0	1
In any other case	0	8
Appointment in execution of a power	15	0
Articles of Association of Company	25	0
Articles of Clerkship	250	0
Award, any decision in writing by an Arbitrator, other than by an Order of the Court. Where the value does not exceed Rs. 1,000, same duty as a Bond.		
In any other case	5	0
Bill of Exchange or Promissory Note payable on demand	0	1
Where payable otherwise than on demand, but not more than one year after date or sight.		
Not ex. Rs. 200, a. 2; ex. Rs. 200, not ex. Rs. 400, a. 4; ex. Rs. 400, not ex. Rs. 600, a. 6; ex. Rs. 600, not ex. Rs. 1,000, a. 10; ex. Rs. 1,000, not ex. Rs. 1,200, a. 12; ex. Rs. 1,200, not ex. Rs. 1,600, R. 1; ex. Rs. 1,600, not ex. Rs. 2,500, R. 1, a. 8; ex. Rs. 2,500, not ex. Rs. 5,000, Rs. 3; ex. Rs. 5,000, not ex. Rs. 7,500, Rs. 4, a. 8; ex. Rs. 7,500, not ex. Rs. 10,000, Rs. 6; ex. Rs. 10,000, not ex. Rs. 15,000, Rs. 9; ex. Rs. 15,000, not ex. Rs. 20,000, Rs. 12; ex. Rs. 20,000, not ex. Rs. 25,000, Rs. 15; ex. Rs. 25,000, not ex. Rs. 30,000, Rs. 18; and for every add. Rs. 10,000, or part thereof, in excess of Rs. 30,000, Rs. 6.		
Where payable at more than one year after date or sight, same duty as a Bond.		
Bill of Lading	0	4
Bond (not otherwise provided for)—		
Not ex. Rs. 10	0	2
Ex. Rs. 10, but not ex. Rs. 50	0	4
Ex. Rs. 50, but not ex. Rs. 100	0	8
Up to Rs. 1,000, every Rs. 100	0	8
For ev. Rs. 500 or part, beyond Rs. 1,000	2	8
Bond, Administration, Customs, Security or Mortgage Deed—For amount not exceeding Rs. 1,000, same duty as a Bond.		
In any other case	5	0
Cancellation	5	0
Certificate or other Document relating to Shares	0	1
Charter Party	1	0
Cheque	0	1
Composition—Deed	10	0
Conveyance, not being a Transfer—		
Not exceeding Rs. 50	0	8
Exceeding Rs. 50, not exceeding Rs. 100	1	0
For every Rs. 100 in excess of Rs. 100 up to Rs. 1,000	1	0
For every Rs. 500, or part thereof, in excess of Rs. 1,000	5	0
Copy or Extract, if the original was not chargeable with duty, or if duty with which it was chargeable does not exceed 1 Rupee	0	8
In any other case	1	0
Delivery Order	0	1
Entry in any High Court of an Advocate or Vakil	500	0
In the case of an Attorney	250	0
Instrument—		
Apprenticeship	5	0
Divorce	1	0
Other than Will, conferring or purporting to confer Authority to adopt	10	0
Lease—Where rent is fixed and no premium is paid, for less than 1 year, same duty as Bond for whole amount; not more than 3 years,		

INDIAN STAMP DUTIES—contd.

	Rs.	A.
same as Bond for average annual rent reserved; over 3 years, same as Conveyance for consideration equal to amount or value of the average annual rent reserved; for indefinite term, same as Conveyance for amount equal to 10 years' rent; in perpetuity, same as Conveyance for consideration equal to one-fifth of rents paid in respect of first 50 years. Where there is premium and no rent, same as Conveyance for amount of premium; premium with rent, same as Conveyance for amount of premium, and same duty as Lease without premium.		
Letter—		
Allotment of shares	0	1
Credit	0	1
License	10	0
Memo. of Association of Company, if accompanied by Articles of Association	15	0
If not so accompanied	40	0
Notarial Act	1	0
Note or Memo. on Sale of Goods or Stock, exceeding Rs. 20	0	1
Note of Protest by a Ship's master	0	8
Partnership—Where the capital does not exceed Rs. 500	2	8
In any other case	10	0
Dissolution of	5	0
Policy of Insurance—		
(1.) Sea.—Where premium does not exceed rate of 2 a., or $\frac{1}{2}$ per cent. of amount insured	0	1
In any other case for Rs. 1,000 or part thereof	0	2
(2.) For time. For every Rs. 1,000 insured, not exceeding 6 months	0	2
Exceeding 6 and not exceeding 12 months	0	4
(3.) Fire.—For 1 month or less, not exceeding Rs. 1,000	0	2
For every further Rs. 1,000 or part More than 1 and not ex. 3 months, not ex. Rs. 1,000	0	3
For every further Rs. 1,000 or part More than 3 months, not exceeding 6 months, per Rs. 1,000	0	4
Ex. 6 months, per Rs. 1,000	0	6
(4.) Accident and Sickness—Against Railway accident, valid for a single journey only	0	1
In any other case—for the maximum amount which may become payable in the case of any single accident or sickness where such amount does not ex. Rs. 1,000, and also where amount ex. Rs. 1,000, for every Rs. 1,000 or part	0	2
(5.) Life or any other Insurance, per Rs. 1,000	0	6
In case of a re-insurance by one Company with another— $\frac{1}{4}$ of duty payable in respect of the original insurance, but not less than 1 anna, or more than 1 rupee.		
Power of Attorney—		
For the sole purpose of procuring the registration of one or more documents in relation to a single transaction or for admitting execution of one or more such documents	0	8
Authorising 1 person or more to act in a single transaction other than that mentioned above	1	0
Authorising not more than 5 persons to act jointly and severally in more than 1 transaction, or generally	5	0
Authorising more than 5 but not more than 10 persons to act	10	0
When given for consideration and authorising the Attorney to sell any immoveable property—		

INDIAN STAMP DUTIES—contd.

	Rs.	A.
The same duty as a Conveyance for the amount of the consideration.		
In any other case, for each person authorised	1	0
Proxy	0	1
Receipt for value ex. Rs. 20	0	1
Shipping Order	0	1
Surrender of Lease—When duty with which Lease is chargeable does not exceed Rs. 5—The duty with which such Lease is chargeable.		
In any other case	5	0
Transfer of Shares—One quarter of the duty payable on a Conveyance for a consideration equal to the value of the share.		
Transfer of any Interest secured by a Bond, Mortgage-deed, or Policy of Insurance—If duty on such does not exceed Rs. 5—The duty with which such Bond, &c., is chargeable.		
In any other case	5	0
Trust, Declaration of—Same duty as a Bond for a sum equal to the amount or value of the property concerned, but not exceeding	15	0
Revocation of—Ditto, but not exceeding	10	0
Warrant for Goods	0	4

FOREIGN MONEYS, AND THEIR

ENGLISH EQUIVALENTS.

FULL EXCHANGE VALUES.

	£	s.	d.
America—(United States) Eagle	2	1	1
Dollar of 100 Cents.	0	4	2
Cent. (about)	0	0	0
Austria—Silver Crown	0	0	10
20 Hellers	0	0	2
Belgium—Gold Ten-Franc Piece	0	7	11
Silver Five Franc	0	3	11
One Franc	0	0	9
Denmark, Norway and Sweden—Krone	0	1	11
100 Ore = 1 Krone			
Egypt—Gold 100-Piastre Piece (Egyptian £)	1	0	3
One Piastre	0	0	2
France—Gold Twenty-Franc Piece	0	15	10
Silver Five-Franc Piece	0	3	11
Franc	0	0	9
Germany—(New Coinage)—			
Gold 20 Mark Piece	0	19	7
10 " "	0	9	9
Silver 5 " "	0	4	9
" 1 " "	0	0	11
" 1 " "	0	0	5
2 Thaler Pieces	0	5	10
1 " "	0	2	11
Greece—Twenty Drachmai Gold Piece	0	15	10
One Drachmai (silver)	0	0	9
Holland—Ten Florins	0	16	8
Florin	0	4	1
India—Gold Mohur = 15 Rupees	1	9	2
Rupee (varying in value)	0	1	4
" " "	0	0	8
" " "	0	0	4
Since 1899 the Sovereign has been legal tender at the ratio of 15 rupees to the £ sterling (= $\frac{1}{4}$ the rupee).			
Italy—Gold 20-Franc Piece	0	15	10
" 5 " "	0	3	11
Franc	0	0	9
Japan—Gold 20 Yen Pieces	0	2	0
Silver 50 Sen Pieces	0	1	0
Value in exchange—1 Yen = 100 Sen = 2/6d.			
Portugal—Gold Milreis	0	4	4
Silver Half	0	2	2
100 Reis	0	0	5
Russia—Half Imperial	0	15	10
Silver Rouble	0	3	2
Ten-Copek Piece	0	0	3
Spain—(Gold)—Oro, 25 Pesetas	0	19	6
(Silver)—Plata, 5 Pesetas	0	3	11
" 2 " "	0	1	7
" 1 " "	0	0	9
The Peseta = 100 Centimos.			
Switzerland—Gold 20-Franc Piece	0	15	10
Silver 5-Franc Piece	0	3	11
Silver Franc	0	0	9
Turkey—Gold Medjidie	0	12	0
Silver Medjidie	0	3	6
Piastre (40 Paras)	0	0	2

QUARTER DAYS.

English. Scottish.

Lady Day ... Mar. 25	Candlemas ... Feb. 2
Midsummer ... June 24	Whitsunday ... May 15
Michaelmas ... Sep. 29	Lammas ... Aug. 1
Christmas ... Dec. 25	Martinmas ... Nov. 11

Half-Quarter Days.

Feb. 8, May 9, Aug. 11 and Nov. 11.

GENERAL INFORMATION, &c.

RATES OF POSTAGE, &c., IN HONGKONG AND AT BRITISH POSTAL AGENCIES IN CHINA.

To	Letters, per 1/2 oz.	Single Post Cards, each.	Reply Post Cards, each.	Books, Commercial Papers, Patterns, &c., per 2 oz.	Registration.
	Cents.	Cents.	Cents.	Cents.	Cents.
UNION COUNTRIES (except as below) ..	10	4	8	2	10
The rate for letters posted in Hongkong and at the several British Postal Agencies in China for the United Kingdom, India, Ceylon, Aden and British Possessions and Protectorates (for list see page 6), which have adopted the Imperial Penny Postage, is 4 cents per 1/2 oz. ..	4	4	8	2	10
Hongkong and British Post Offices at Shanghai, Ningpo, Hankow, Liu Kung Tau, Swatow, Amoy, Foochow, Hoihow, Canton and Chefoo (between Hongkong and Canton the rate for letters is 2 cents per 1/2 oz.) ..	4	4	8	2	10
Macao (from Hongkong and Canton) ..	2	1	2	2	10
Macao (from all other British Post Offices in China) ..	5	1	2	2	10
NON-UNION COUNTRIES:—					
Abyssinia ..	10	4	8	2	10
Afghanistan ..	10	4	8	2	10
Arabia ..	10	4	8	2	10
China ..	4	1	2	2	10
Foreign (non-British) establishments ..	10	4	8	2	10
Friendly Islands (Tonga Islands) ..	10	4	8	2	10
Morocco (with a few exceptions) ..	10	4	8	2	10
Navigators' Island (Samoa), Solomon Island, Rhodesia (N.E. & N.W.), including Northern Zambesia ..	10	4	8	2	10
Other parts ..	10	4	8	2	10
LOCAL DELIVERY ..	2	1	2	2	10

* For Commercial Papers, lowest charge is 10 cents. For Patterns, lowest charge is 4 cents. † Prepayment is compulsory. ‡ An additional charge is made on delivery. † Registration in China through British Offices extends to Hoihow, Canton, Swatow, Amoy, Foochow, Ningpo, Shanghai, Hankow, Liu Kung Tau and Chefoo only. ‡ Registration is incomplete, not extending beyond port of arrival. † Single Newspapers, 2 cents per 4 ozs., or fraction, to Australia, China, Ceylon, Corea, Formosa, India, Japan, Macao, Netherlands India, New Zealand, Philippines, Siam, Straits Settlements, Timor. ** For Chinese Postal Hong packets, the rate to and from Canton and to Macao is 4 cents per 1/2 oz.

NOTE.—Limit of weight of Book Packets is:—To British Offices 5 lbs., other offices 4 lbs. Patterns, British Offices 5 lbs., for places in the Postal Union 12 ozs.

Parcel Post.—Hongkong and China, not exceeding 3 lbs., 25 cents; 7 lbs., 50 cents; 11 lbs., 75 cents. To Japan, Formosa and Corea, each lb. to 5 lbs., 20 cents. To United Kingdom, not over 3 lbs., 50 cents; over 3 lbs., but not over 7 lbs., \$1.00; over 7 lbs., but not over 11 lbs., \$1.50. Other countries, various rates.

Money Orders are issued at Hongkong and Shanghai. Local Money Orders: the commission to be charged on the issue of Money Orders payable in Hongkong and the Agencies in China will be one cent per dollar or fraction of a dollar, with a minimum charge of 5 cents. Foreign Money Orders: the commission to be charged will be one and a half cent per dollar on the amount (or equivalent of the amount), in dollars, with a minimum charge of 10 cents. No Order (except in the case of those drawn on India, for which the limit is 150 rupees, and those on Japan, Borneo, Siam and Straits Settlements, for which the limit is \$100) must exceed £10 or \$50. Gold, Orders on the Countries drawn through the London Post Office are paid less the following discount, for which the remitter should allow. All such Orders must be expressed in British currency:—For sums not exceeding £2, -/3; exceeding £2 but not exceeding £6, -/6; exceeding £6 but not exceeding £10, -/9.

Telegrams to Europe.—Great Britain and all other European Countries (including Russia and Turkey, via Suez), 7 francs (charges are collected in Dollars at a rate of exchange which is subject to periodical alteration) per word.

INDIAN MONEY TABLE.

3 Pie	make 1 Pice
12 Pie or 4 Pice	" 1 Anna
192 Pie, or 64 Pice, or 16 Annas	" 1 Rupee
16 Rupees (Silver)	" 1 Mohur (Gold)
100,000 "	" 1 Lakh or Lac

INDIAN WEIGHTS.

1 Tola	= 61 2/3 drachms avoirdupois
5 Tolas	= 2 1/2 ounces
16 Chittacks	= 1 Seer
40 Seers	= 1 Mun (Maund)
27 2/22 (nearly 27 1/2) Maunds	= 1 ton

Lineal measures vary throughout India; in Bengal 3 1/2 Beegahs go to an acre.

CEYLON POSTAL RATES.

Inland Rates.—Letters per oz., 5 cents. District Letters, 2 cents per oz. Post Cards, 2 cents; reply, 4 cents. Letter Cards, 5 cents; reply, 10 cents. Printed Matter, not exc. 5 ozs., 2 cents; exc. 5 ozs., not exc. 10 ozs., 5 cents; exc. 10 ozs., not exc. 1 lb., 10 cents; every add. lb. or fraction, 10 cents. Parcels, not exc. 4 ozs., 5 cents; not exc. 8 ozs., 10 cents; not exc. 1 lb., 15 cents; every add. lb. or fraction, 15 cents.

Rates to India.—Letters per 1/2 oz., 5 cents. Post Cards, 2 cents; reply, 4 cents. Printed Matter, &c., 1st 4 ozs., 2 cents; every add. 2 ozs., 2 cents. Patterns or Samples, 4 ozs., 5 cents; every add. 2 ozs., 3 cents. Parcels, not exc. 1/2 lb., 20 cents; 1 lb., 25 cents; each add. lb., up to 11 lbs., 15 cents; 11 lbs. to 12 lbs., 3 Rs., 25 cents; each add. lb. to 50 lbs., 25 cents.

Foreign Rates.—Letters to the United Kingdom, Aden and the British Colonies, &c., which have adopted the Imperial Penny postage (for list see Indian Foreign Postal Rates, page 6), each 1/2 oz., 6 cents. All other countries each 1/2 oz., 15 cents. Post Cards, 6 cents; reply, 12 cents. Printed Papers, per 2 ozs., 3 cents; every add. 2 ozs., 2 cents. Commercial Papers, per 10 ozs., 15 cents; every add. 2 ozs., 3 cents. Patterns and Samples, per 4 ozs., 5 cents; every add. 2 ozs., 3 cents.

Registration.—Inland or Foreign, 10 cents.

Telegraph Rates, Inland.—"Urgent" Telegrams, 75 cents, "Ordinary," 25 cents per first 8 words or groups of 3 figures, every add. word or group of 3 figures, 10 cents and 5 cents respectively, address free.

Parcel Post to United Kingdom.—Charge is first 3 lb., 75 cents; above 3 lbs. and up to 7 lbs., 1 R. 50 cents; above 7 lbs. and up to 11 lbs., 2 Rs. 25 cents. Limit, 3 ft. 6 ins. in length; length and girth together, 6 ft. Parcels may be despatched by the quicker route, via Italy and France, on payment of an extra fee of 75 cents per parcel. Parcels containing valuables must be insured for at least half of their value.

Money Order Rates:—

Inland. Re. c.	India. Re. c.	United Aus- Kingdom. tra- Re. c. Re. c.
up to Rs. 10 ... 0 10	up to Rs. 10 ... 0 12	up to £2 ... 0 25 ... 0 37
" 10 & 20 ... 0 20	" 10 & 25 ... 0 25	" £2 & £5 ... 0 50 ... 0 75
" 20 & 30 ... 0 30	" 25 & 50 ... 0 50	" £5 & £7 ... 0 75 ... 1 12
" 30 & 40 ... 0 40	" 50 & 75 ... 0 75	" £7 & £10 ... 1 0 ... 1 50
" 40 & 50 ... 0 50	" 75 & 100 ... 1 0	
" 50 & 80 ... 0 80	" 100 & 125 ... 1 25	
" 80 & 100 ... 1 0	" 125 & 150 ... 1 50	

SUN RISES AND SETS AT BOMBAY, 1904.

With corrections to deduce the same for Calcutta and Madras.

1904.	Rises.	Sets.	Corr.	1904.	Rises.	Sets.	Corr.	1904.	Rises.	Sets.	Corr.
Jan. 7	h. m.	h. m.	m.	May 5	h. m.	h. m.	m.	Sept. 1	h. m.	h. m.	m.
14	6 35	5 37	+ 9	12	5 30	6 22	- 6	8	5 47	6 12	- 3
21	6 38	5 41	+ 8	19	5 27	6 25	- 7	15	5 48	6 6	- 2
28	6 37	5 49	+ 7	26	5 25	6 28	- 8	22	5 49	6 0	- 1
Feb. 4	6 35	5 53	+ 6	June 2	5 24	6 30	- 8	29	5 51	5 48	+ 1
11	6 32	5 57	+ 6	9	5 23	6 35	- 9	Oct. 6	5 53	5 43	+ 2
18	6 28	6 0	+ 5	16	5 24	6 37	- 10	13	5 55	5 38	+ 3
25	6 24	6 3	+ 4	23	5 25	6 39	- 10	20	5 57	5 32	+ 4
Mar. 3	6 19	6 5	+ 3	30	5 27	6 40	- 10	27	6 0	5 28	+ 5
10	6 13	6 7	+ 2	July 7	5 30	6 39	- 9	Nov. 3	6 3	5 25	+ 6
17	6 7	6 9	+ 1	14	5 32	6 37	- 9	10	6 7	5 22	+ 7
24	6 2	6 11	0	21	5 35	6 35	- 8	17	6 11	5 20	+ 8
31	5 56	6 13	- 2	28	5 37	6 35	- 8	24	6 15	5 20	+ 9
Apr. 7	5 50	6 16	- 3	Aug. 4	5 39	6 32	- 7	Dec. 1	6 19	5 20	+ 9
14	5 44	6 18	- 4	11	5 41	6 28	- 7	8	6 23	5 21	+ 9
21	5 39	6 18	- 4	18	5 43	6 23	- 6	15	6 27	5 23	+ 10
28	5 34	6 20	- 5	25	5 45	6 18	- 5	22	6 31	5 26	+ 10
								29	6 34	5 31	+ 10

SUNRISE Calcutta, Add + corr. to or subtract - corr. from time at Bombay.
 Madras, Subtract + corr. from or add - corr. to " "
 SUNSET Calcutta, Subtract + corr. from or add - corr. to " "
 Madras, Add + corr. to or subtract - corr. from " "

ALMANAC FOR 1905.

PRINCIPAL ARTICLES OF THE CALENDAR.

Golden Number ..	6	Solar Cycle ..	10	Roman Indiction ..	3
Epact ..	24	Dominical Letter ..	A	Julian Period ..	6612

The Year 5666 of the Jewish Era commences on Sept. 30.

The Year 1323 of the Mohammedan Era commences on March 8.

Ramadan (Month of Abstinence observed by the Turks) commences on Oct. 30.

	Sun.	Mon.	Tu.	We.	Th.	Fri.	Sat.	Sun.	Mon.	Tu.	We.	Th.	Fri.	Sat.	Sun.	Mon.	Tu.	We.	Th.	Fri.	Sat.
JANUARY	1	2	3	4	5	6	7	8	9	10	11	12	13	14	15	16	17	18	19	20	21
FEB.	1	2	3	4	5	6	7	8	9	10	11	12	13	14	15	16	17	18	19	20	21
MARCH	1	2	3	4	5	6	7	8	9	10	11	12	13	14	15	16	17	18	19	20	21
APRIL	1	2	3	4	5	6	7	8	9	10	11	12	13	14	15	16	17	18	19	20	21
MAY	1	2	3	4	5	6	7	8	9	10	11	12	13	14	15	16	17	18	19	20	21
JUNE	1	2	3	4	5	6	7	8	9	10	11	12	13	14	15	16	17	18	19	20	21
JULY	1	2	3	4	5	6	7	8	9	10	11	12	13	14	15	16	17	18	19	20	21
AUGUST	1	2	3	4	5	6	7	8	9	10	11	12	13	14	15	16	17	18	19	20	21
SEPTEMBER	1	2	3	4	5	6	7	8	9	10	11	12	13	14	15	16	17	18	19	20	21
OCTOBER	1	2	3	4	5	6	7	8	9	10	11	12	13	14	15	16	17	18	19	20	21
NOVEMBER	1	2	3	4	5	6	7	8	9	10	11	12	13	14	15	16	17	18	19	20	21
DECEMBER	1	2	3	4	5	6	7	8	9	10	11	12	13	14	15	16	17	18	19	20	21

Septuagesima S. Feb. 19 Easter Day .. April 23 Whit Sunday .. June 11
 Good Friday .. April 21 Ascension Day .. June 1 1st S. in Advent Dec. 3

CONCISE DIRECTORY.

We have inserted this short Directory for the use of our Subscribers under the impression that it will prove of utility to country and foreign residents who may desire to communicate with a firm in any particular Trade or Profession, and have no means at hand of knowing whom to address.

ACTS OF PARLIAMENT, PARLIAMENTARY PAPERS, GOVERNMENT PUBLICATIONS—
(Sole Agents in England and Wales)
Eyre & Spottiswoode, East Harding-st., E.C.

ADDRESS PLATES—
Ivory, Ivorine, Bone, Brass, Copper, German Silver. Endolithic Manufacturing Co., Ltd., 61, Fore-street, London, E.C.

AERATED PASTRY FLOUR—
Coombs' Eureka Aerated Flour Co., Ltd., Lenton Boulevard, Nottingham, and 8 & 8A, Farringdon-road, London, E.C.
Also owners of Farrar's Pastry Roller (Patent). Tele. add.: "Eureka, Nottingham," "Antidotal, London."

AGENTS, COLONIAL AND INDIAN AND GENERAL MERCHANTS—James Porter & Co., 13, Fenchurch-avenue, London, E.C.

ALKALI MANUFACTURERS—
The United Alkali Co., Limited, 30, James-street, Liverpool.

Ammonia Alkali, Bleaching Powder, Soda Crystals, Caustic Soda, Bicarb: Soda, &c.

AMMUNITION—The King's Norton Metal Co., Ltd., King's Norton, nr. Birmingham, England. Managing Directors, T. R. and T. A. Bayliss. Tele. add.: "Metal, King's Norton."

Mfrs. of all kinds of Military Ammunition for Small Arms and Quick-firing Guns. Rolled Brass, Copper, Nickel, &c., &c. Brass and Copper Rivets and other Specialities.

ARTESIAN WELLS—Le Grand & Sutcliff, 125, Bunhill-row, London, E.C.
Registered Trade Mark, "Abyssinian."

ART FURNITURE MANUFACTURERS—
Oetzmann & Co., 62 to 79, Hampstead-road, London; 60 & 61, Grafton-street, Dublin; and 75, Union-street, Ryde, I. W.

ASBESTOS—The United Asbestos Co., Limited, Dock House, Billiter-street, London, E.C.
Asbestos Goods, Engineers' Stores, Lubricating Oils, Creams and Greases, Boiler and Pipe Covering Composition. Tele. address: "Asbestos," London.

BALATA AND COTTON BELTING—
Arthur Cort & Co., 277, Camberwell New-road, London, S.E.
Tele. add.: "Cort, Camberwell, London."

BENT CRANKS AND FORGINGS—
Woodhouse & Rixson, Sheffield.
Bent Cranks, Round and Square Section, Forged or Finished. All kinds of Steel Forgings.

BIBLES AND PRAYER BOOKS—
Henry Frowde, Oxford University Press Warehouse, Amen Corner, London, E.C.

(Of all booksellers throughout the World.)
BILLIARD AND BAGATTE TABLE MAKER—
George Edwards, 134, Kingsland-road, London, N.E. All Tables have the low and fast Cushions, not affected by any climate. Also large stock of Second-hand Tables.

BILLIARD BALLS (Composition)—
"Crystalate," guaranteed. Made in England. Endolithic Manufacturing Co., Ltd., 61, Fore-street, London, E.C.

BIRD SEEDS—
R. Hyde & Co., Camberwell, London.
Aesthetic Bird Seeds, Parrot Food, Shell, Gravel, &c., in packets. Sold everywhere.

BLOTTING PAPER MANUFACTURERS—T. B. Ford (Ltd.), Snakeley Mill, Loudwater, Bucks.
Samples and Prices on application. Each sheet water-marked "Ford, 428 Mill."

BOLT & NUT, SCREW & RIVET MAKERS—
Herbert W. Periam, Limited, Floodgate-street Works, Birmingham.
Also maker of Washers and Roofing Nails.

BOOTS AND SHOES—
J. & E. Reynolds, Chesham, Bucks.
Manufacturers of all classes of Boots and Shoes for South Africa and General Export and Home Trade.

BUILDINGS, PORTABLE, WOOD AND IRON, &c., &c.—
Boulton & Paul, Limited, Manufacturers, Rose Lane Works, Norwich.

BUNTING MANUFACTURERS—
E. Riley & Co., Providence Street Mills, Leeds.

CARBOYS, &c.—
E. Biffitt & Co., Ltd., The Aire and Calder Glass Bottle Co.'s Works, Castleford, Yorks.
Telegrams, Biffitts, Castleford.

CARRIAGE & MOTOR CAR MANUFACTURERS—
Henry Whitlock, Limited, Holland Gate, Kensington, & Turnham Green, London, W.

CLOTHING MFRS. AND CLOTH MERCHANTS—
Grainger & Smith, Limited.
Principal Warehouse & Factories, Dudley; also at 64, Aldermanbury, London; Carr's-lane, Birmingham; Trinity-st., Hanley; Mount-st., Nottingham; Guildhall-st., Preston; Victoria-st., Belfast; and Parliament-st., Dublin.

Men's, Youths' and Juvenile Clothing, Woollen Cloth and Tailors' Trimmings.

COCOA, COCOA ESSENCE & CHOCOLATE MFRS.
James Epps & Co., Limited. Manufactory: Holland-street, Blackfriars, London.

CONFECTIONERS—M. A. Craven & Son, Ebor Confectionery Works, York.

COPYING APPARATUS MANUFACTURERS—
The Copying Apparatus Co., Limited, 123, Cannon-street, London, E.C.
The Simplex Hektograph, The Neo-Cyclostyle, The A.B.C. Copier, The Automatic Cyclostyle, The Edison Mimeograph, The Duplicator, &c. Write for circulars.

COTTON BAGS—
From 1 to 140 lbs. in white and unbleached Calico. T. & W. Judge. Original and Largest Manufacturers and Printers, Cumberland Works & Manchester Works, Kennington, London. Tele. Add.: "Cotton Bag," London.

CRANES AND LIFTING MACHINERY—
Thomas Smith, Steam Crane Works, Old Foundry, Rodley, near Leeds.
Telegraphic Address: "Smith, Rodley."

London Office, 9, Victoria-st., Westminster, S.W. Tele. Address: "Accrocher, London."

CYDER (Devonshire Champagne)—
Jno. Symons & Co., Limited, Totnes, Devon, and Ratcliff, London, E.
Special brands: "Imperial" & "Apple & Blossom." Sole makers of Symonia & Sydrina.

DISINFECTORS (STEAM)—Manlove, Alliott & Co., Ltd., Engineers, Nottingham; also Laundry Machinery & Hydro-Extractors.

DISINTEGRATORS (Carter's)
Sole Manufacturer: J. Harrison Carter. Works: Dunstable. London Office: 82, Mark Lane, E.C. Tele. Add.: Milling, Dunstable.

DOG BISCUITS—
Walker, Harrison & Garthwaites, Ltd., Phoenix Biscuit Works, Ratcliff Cross, London, E.

ELECTRIC LIGHT PILLARS, BRACKETS, CARRIERS, &c.—
Walter Macfarlane & Co., Architectural, Sanitary and General Iron Founders, Saracen Foundry, Glasgow.

EMERY WHEEL MAKERS—
Luke and Spencer, Limited, Broadheath, Manchester.
Also Manufacturers of Grinding and Polishing Machinery. Catalogue on application.

ENAMELLED LETTERS AND TABLETS—
Garnier & Co., Inventors and Actual Makers, 86, Farringdon-street, London, E.C., and Ludgate Enamelling Works, Willesden.

ENGINES—STEAM, GAS AND OIL—
Robey & Co., Limited, Globe Works, Lincoln, England.

ENGLISH PRESERVED PROVISIONS—
Harry Peck & Co., Snow Hill, London.
Table Delicacies and Fancy Cheeses, packed in Tins and Glasses, for Export; fine fancy Groceries. Sole Manufacturers of the celebrated "Archer" Brand Potted Meats and Fish, Galantines, Tongues, Patés, Soups, Sausages, and Preserved Provisions.

ESSENCES, ESSENTIAL OILS, &c., for Mineral Water and Confectionery Manufacturers—
The London Essence Company, George-st., Camberwell Green, London, S.E.

FANCY GOODS AND TOYS—
Purses, Bags, and such like. Faudels, Newgate-street, London.

FELT MANUFACTURERS—F. McNeill & Co., Lamb's-passage, Bunhill-row, London, E.C.
Tele. Add.: "Eye-ball." Est. 1833.

Government Contractors, Roofing, Sarking, Inodorious, Sheathing and Hair Felts.

FIREWOOD SPLITTING, BUNDLING, "IDEAL"
SawGuards, Benches & Sharpening Machinery, M. Glover & Co. Write us. "Make Money." Patentees and Sole Makers, Leeds.

FLAGS—E. Riley & Co., Providence-street Mills, Leeds.

FLOUR MILLERS—
W. Vernon & Sons, Liverpool and Birkenhead.
Manufacturers of Millennium Flour. 50 Gold Medals.

FOODS FOR INFANTS, INVALIDS, AND THE AGED—J. R. Neave & Co., Fordingbridge, Hants. Manufacturers of "Neave's Food." Gold Medal awarded, Woman's Exhibition, London, 1900.

FUSE FOR BLASTING—
The Bennett Fuse. "Crown Brand." William Bennett, Sons & Co., Camborne, Cornwall, England.

GAME & POULTRY FOODS—
Walker, Harrison & Garthwaites, Ltd., Phoenix Biscuit Works, Ratcliff Cross, London, E.

GAS METER MANUFACTURERS—
Thomas Glover & Co., Ltd., 214-222, St. John-st., Clerkenwell Green, London, E.C.
New Improved Prepayment Meters for Pennies, Shillings, or any coin.

GAS, WATER AND SANITARY FITTINGS, AND HOT WATER APPARATUS—
The Thames Bank Iron Co., Upper Ground-street, London, S.E.

GAUGE GLASS MANUFACTURERS—
Tomey & Sons, Tay Glass Works, Perth. Sole Makers of the "Eureka" Gauge Glass.

GELATINE—Nelson, Dale & Co., Limited, 14, Dowgate-hill, London, E.C.
For First Class Jellies.

GLASS BOTTLE MANUFACTURERS—
Cannington, Shaw & Co., Limited, St. Helens, Lancashire, England.
Manufacturers of Glass Bottles, Codd's Ebonite Screw and Crown Cork Mouth Confectioners' Bottles, Boxes and Cases.

GLAZIERS' DIAMOND AND LEAD-VICE MANUFACTURERS—
Sharratt & Newth, 43-44, Percival-street, Clerkenwell, London, E.C.
Telephone No. 7439, Central.

GLAZING FOR ROOFS—
Mellows & Co., Works, Sheffield.
And at 28, Victoria-street, London.
Patent Eclipse Glazing. No Putty, Paint, Asbestos or maintenance required. 20 years' Test. Millions of feet Glazed.

GRAB DREDGING & EXCAVATING MACHINERY (The Kingston Patent)—Rose, Downs & Thompson, Limited, Old Foundry, Hull; and 12, Mark-lane, London, E.C.

GREENHOUSES, CONSERVATORIES, &c., &c.—
Boulton & Paul, Limited, Manufacturers, Rose-lane Works, Norwich.

HOP AND AGRICULTURAL SEED FACTORS—
W. H. & H. Le May, 67, Boro, London, S.E.
English and Foreign Hops, Clover, Grass, Rape and Mustard Seeds, packed for Export. Teleg., "LeMays, London." Tel, 399, Hop.

HORSE HAIR MANUFACTURERS—
Edward Webb & Sons (Worcester), Limited, Copenhagen-street, Worcester.
Hair Cloth of all kinds, Curled Hair, Horse Hair Carpet, Hop and Cider Cloths, Hair Mattresses, Brush Drafts, Hair Cord and Yarn.

HYDRAULIC MACHINERY, PRESSES, PUMPS, ACCUMULATORS, RIVETTERS, VALVES, &c.—
Henry Berry & Co., Ltd., Leeds.

INDIARUBBER MANUFACTURERS—
P. B. Cow & Co. Works, Streatham. 46 & 47, Cheapside, London, E.C.
Coats, Cloaks, Air & Water Goods, Tennis, Cricket Hold-alls, Mats, Garden Hose, &c. &c.

LAUNCH BUILDERS—
The Thames Valley Launch Co., Ltd., Chief Offices & Works, Weybridge, Surrey.
Designers and Builders of all kinds of Launches for Home or Abroad. Estimates Free. W. Rowland Edwards, A.M.I.E.E., Managing Director.

LENSES FOR SHIP AND RAILWAY LAMPS—
Jas. Stevens & Son, Victoria Glass Works, Birmingham.
Lenses, Port-hole glasses, bent glasses, bevelled glasses, and glass of every description used in Steamers or Railways.

LIFTS AND ELEVATORS—
Waygood & Otis Limited, Falmouth-road, London, S.E.

LIME JUICE AND LIME JUICE CORDIAL—
Evans, Sons & Co., Liverpool, and Evans, Lescher, & Webb, London.
Evans & Sons, Ltd., New York & Montreal. Sole Consignees of "Montserrat" Lime Juice.

MADE IN ENGLAND

MADE IN ENGLAND

MADE IN ENGLAND

MADE IN ENGLAND

MADE IN ENGLAND

MADE IN ENGLAND

MADE IN ENGLAND

MADE IN ENGLAND

MADE IN ENGLAND

MADE IN ENGLAND

MADE IN ENGLAND

MADE IN ENGLAND

MADE IN ENGLAND

MADE IN ENGLAND

MADE IN ENGLAND

MADE IN ENGLAND

MADE IN ENGLAND

MADE IN ENGLAND

MADE IN ENGLAND

MADE IN ENGLAND

MADE IN ENGLAND

MADE IN ENGLAND

MADE IN ENGLAND

MADE IN ENGLAND

MADE IN ENGLAND

MADE IN ENGLAND

MADE IN ENGLAND

MADE IN ENGLAND

MADE IN ENGLAND

MADE IN ENGLAND

MADE IN ENGLAND

MADE IN ENGLAND

MADE IN ENGLAND

MADE IN ENGLAND

MADE IN ENGLAND

MADE IN ENGLAND

CONCISE DIRECTORY—continued.

MACHINERY STORES FOR ENGINEERS, MINES, MILLS, TEA GARDENS, &c.—George Hatch, Ltd., Queenhithe, London, England.

Illustrated Catalogue.

MALTED FOOD FOR INFANTS AND INVALIDS—Coombs' Eureka Aerated Flour Co., Ltd., Lenton Boulevard, Nottingham, and 8 & 8a, Farringdon-road, London, E.C.

Also Makers of Custard, Blanc Mange, Egg and Baking Powders, Fruit Saline, Health Salt, Grang Salt, Lady's Cake Flour and Still Lemonade Powder.

MANTLE MANUFACTURERS (to the Trade and Shippers only)—

Corby, Palmer and Stewart, 39, 40, 41, St. Paul's Churchyard, London, E.C. Ladies' and Children's Mantles, Jackets, Capes, Blouses, Mackintoshes, Imperial Cloaks, Fur Capes and Costumes.

MAPS: PUBLISHER, MAPSELLER AND GEOGRAPHICAL BOOKSELLER—Edward Stanford, 12, 13 and 14, Long Acre, London, W.C.

(Branch Office: 26 and 27, Cockspur-street, S.W.) Catalogues Free.

METALS AND ALLOYS—The Phosphor Bronze Co., Ltd., Southwark, London, S.E.

Ingots, Castings, Bars, Wire, Sheet, &c., as supplied to British and Foreign Governments, Railways, Engineers, &c., throughout the World.

MINING, QUARRYING & AGRICULTURAL TOOLS—

The Hardy Patent Pick Co., Ltd., Sheffield.

MOULDING AND PICTURE FRAME MFRS. AND PRINTSELLERS—Beckmann Bros., 26 and 27, Cow Cross-street, London, E.C.

Telephone, 952, Holborn.

MUSIC PUBLISHERS—

Edwin Ashdown, Limited, Hanover-square, London, W.; New York and Toronto.

NEEDLE, FISH-HOOK AND FISHING TACKLE MANUFACTURERS—Henry Milward & Sons, Limited, Washford Mills, Redditch.

Sole Makers of the "Calyx-eyed" easy threading and "Best Best" Needles. Makers of the very best Fishing Tackle.

OAKUM MANUFACTURERS—

Anglo-American Rope and Oakum Co., Liverpool. All kinds Machine Spun and Unspun Oakum. Awarded 15 Medals and Diplomas. Established 1868.

OFFICE FITTERS AND FURNITURE MFRS.—

Rankin & Co., Successors to Newson & Co., Finsbury House, Finsbury-square; and 2, 4 & 6, Worship-street, London, E.C. Manufacturers of all kinds of Office Furniture and Fittings. Largest Stock in London.

OIL SEED CRUSHING, REFINING AND FILTERING MACHINERY—

Rose, Downs & Thompson, Limited, Old Foundry, Hull; and 12, Mark-lane, London, E.C.

OPTICIANS—Ross, Ltd., Manufacturers, 111, New Bond-street, London, W.

Microscopes, Telescopes, Field Glasses, Photographic Lenses, &c., &c. Tele. Address: "Rossano, London."

PAPER MAKERS—Alex. Pirie & Sons, Limited, Stoneywood Works, Aberdeenshire, and 97, Farringdon-street, London, E.C.

Tele. Address: "Pirie, Aberdeen."

PATENT AGENTS—Jensen & Son, 77, Chancery-lane, London, W.C.

Patents, Designs and Trade Marks secured all over the World.

PHOTOGRAPHERS TO H.M. THE KING—

Russell & Sons, 17, Baker-street, London. Large Series of Portraits of Royalties, Aristocracy, Parliamentary, Bishops, &c. Miniatures and Enlargements made from any Photograph.

PHOTOGRAPHIC APPARATUS—

George Houghton & Son, Ltd., 88 and 89, High Holborn, London, W.C. Works: Tooting, Surrey; and Dean-street, W.C.

Hand & Stand Cameras & all Materials.

PHOTOGRAPHIC SHUTTERS—

The Thornton-Pickard Manufacturing Co., Limited, Altrincham. Original and Largest Makers of Shutters for every class of work.

PICKS—

The Hardy Patent Pick Co., Ltd., Sheffield.

PLATINUM REFINERS AND DEALERS—

Johnson, Matthey & Co., Ltd., 74-81, Hatton Garden, London, E.C.

Platinum Apparatus—Sheet, Foil, Wire, Crucibles, &c. Gold and Silver Refiners. Standard Silver, Discs, Sheet Wire.

POLISHING POWDER—J.F. Baumgartner & Co., (C. D.) F. 4, Newman-street, London, W.

"La Brillantine" Metallic Powder. The best and cheapest Polishing Powder for Metals and Glass (especially Brass).

POSTAGE STAMP MERCHANTS AND PHILATELIC PUBLISHERS—

Whitfield King & Co., Ipswich.

Foreign and Colonial Postage Stamps for Collectors. Publishers of the Universal Standard Catalogue of the Postage Stamps of the World. Price 1/3, post free.

PRINTERS' ROLLERS AND COMPOSITION—

"The Durable" Printers' Roller Co., Ltd., Charles-st., Hatton-gdn., London, E.C.

Contractors to H.M. Printing Offices.

Compo. for Home and Export. Send for "Right-Hand of the Press," free by post.

PRINTING MACHINERY OF ALL KINDS—

William Dawson & Sons, Ashfield Foundry, Otley, Yorks. Inventors and Patentees of the Original "Wharfedale."

PROVISION MERCHANTS (EXPORT)—

Griffiths, McAlister & Co., 3, Mersey-street, Liverpool.

Cable, "Coomassie." Contractors to H.M. Government. First Class Mail Steamers.

Officers' Messes, &c.

PUMPING MACHINERY MANUFACTURERS—

Pulsometer Engineering Co., Limited, Reading, England.

Steam Pumps for all duties, including "The Pulsometer." The best out-door pump.

ROAD MATERIALS—

Mountsorrel Granite Company, Limited, Mountsorrel, near Loughborough.

Full Particulars and Prices on application. Tele. Address: "Granite, Mountsorrel."

ROPE MANUFACTURERS—

R. Hood Haggie & Son (Limited), Newcastle-on-Tyne and London.

Estbd. 1789. Makers of Ropes of all kinds. Speciality—Robin Hood Brand Manila Rope. (Foreign Orders through Merchants.)

RUBBER STAMP & TYPE MANUFACTURERS—

E. M. Richmond, 8 & 9, Snow Hill, London.

Stamps, Type, Stencils, Self-Inking Pads, &c. Complete Outfits for making Stamps, with full instructions. Catalogues free.

SADDLERY—

Geo. Smith & Co., Mfrs., 151, Strand, London. Manufacturers of Saddlery, Harness, Whips, Bags, Portmanteaus, &c. Catalogues Free on application.

SAFES, IRON AND STEEL DOORS—

Frederic Whitfield & Co., 11 & 12, St. Andrew's Hill, London, E.C.

Works: Oxford-street, Birmingham.

SALT FOR THE TABLE, THE BATH AND THE GARDEN—D. Bumsted & Co., 36, King William-street, London, E.C.

SANITARY POTTER—S. H. Rowley, Swadlincote, near Burton-on-Trent.

Patentee & Maker of the "Washout" Closet, & of Wash-down Closets, Pedestal Closets, Lavatories, Sinks, Urinals, &c., of finest Quality.

SEALING WAX—

George Waterston & Sons, Edinburgh, 8, St. Bride Street, City, London.

Makers of the "Bee Brand" Letter, Parcel and Bottle Waxes for all climates.

SEED GROWERS AND MERCHANTS—

Sutton & Sons, The King's Seedsmen, Reading.

Farm Seeds, Garden Seeds and Bulbs specially selected and packed for all parts of the World. Full Price Lists free on application.

SHEEP DIP—

William Cooper & Nephews, Manufacturers of Cooper's Sheep Dipping Powder, the ORIGINAL POWDER DIP.

Works, Berkhamsted, England. Branch Houses: Sydney, Port Elizabeth, Buenos Aires, Odessa, Chicago and Auckland.

SHIP BISCUITS—

Walker, Harrison & Garthwaites, Limited, Phoenix Biscuit Works, Ratcliff Cross, London, E.

SHOVELS AND SPADES—

The Hardy Patent Pick Co., Ltd., Sheffield.

SLATES, SLATE SLABS, CISTERNS, &c., &c.—

Davies Bros., Portmadoc, N. Wales. Blue, Red and Green Roofing Slates, Slate Slabs, Urinals, Lavatories, Cisterns, &c. Home and Export. Telegrams "Seivad."

SOAP MANUFACTURERS—

The United Alkali Co., Ltd., "Camden" Soap Works, Runcorn, Cheshire. All classes of Tallow, Bar, Brown, and Toilet Soaps. "Cashmere," "Acme" and other Brands.

STEAM ENGINE PACKING—

United States Metallic Packing Co., Ltd., Soho Works, Bradford.

Telegraphic and Cable Address, "Metallic, Bradford." Codes, A.B.C., and Liebers.

STEEL—

The Hardy Patent Pick Co., Ltd., Sheffield.

STEEL PEN MAKER—

W. Mitchell, 44, Cannon-street, London, E.C., and Washington Works, Cumberland-street, Birmingham.

STRAW PLAIT & CHIP DYERS & BLEACHERS—

T. Lye and Sons, Luton, England. Large Warehouses for Free Storage of Dyed and Bleached Goods awaiting Customers' disposal. Established 1850.

SURGICAL INSTRUMENT MANUFACTURERS—

Down Bros., Ltd., 21, St. Thomas's-street, London, S.E.

Factory: King's Head Yard, Borough. Teleg.: Down, London. Tel: 965 Hop.

TAILOR'S WAREHOUSEMEN—

James Platt & Co., keep a large stock of every kind of Woollen Goods, Manchester Goods and Trimmings, required by Tailors in all parts of the World. Patterns and Price List sent free. James Platt & Co., 78, St. Martin's-lane, London, W.C.

TILE MANUFACTURERS—

Craven Dunnill & Co., Limited, Jackfield, R.S.O., Shropshire.

Tiles of all kinds, Encaustic, Plain, Enamelled, Glazed, Majolica, Printed, Painted, Lustre, Ceramic Mosaics, Constructional Faience. London, 37, Maddox-street, W.

TIN BOX MANUFACTURERS—

Barringer, Wallis & Manners, Ltd., Mansfield, Notts. Manufacturers of Decorated Tin Boxes for all trades, also Manufacturers of Tin Show Tablets for Advertisements.

TOBACCO PIPE MANUFACTURERS—

Allen & Wright, 26, Poultry, London, E.C.; 31, St. Mary Axe, E.C.; 217, Piccadilly, London, W.

Makers of finest quality only, Briar and Meerschaum Pipes. Brand "A. & W." Illustrated Catalogues, Post Free.

TRUNK AND TRAVELLING BAG MANFRS.—

John Pound & Co., 81-84, Leadenhall-street; 67, Piccadilly; 211, Regent-street; 378, Strand; and 177-8, Tottenham Court-road, London.

The largest manufacturers of their kind.

TWEEDS—

James Platt & Co., Manufacture at Broad-wath Mills, Head's Nook, near Carlisle, England, their Celebrated "Platt's Tweeds," for Riding, also "Carlisle Tweeds" for hard general wear, and their "Livery Tweeds" for Livery. London Address, 78, St. Martin's-lane, W.C.

TYPEWRITERS—

Remington Standard. (New Model.) All kinds of Typewriter Supplies.

Wyckoff, Seamans & Benedict, Proprietors, 100, Gracechurch-street, Telephone Nos. 2464 & 2854. London, E.C.

VENTILATOR MANUFACTURERS—

James Howorth & Co., Victoria Works, Farnworth, near Bolton; or Manchester, England.

WASHING AND MANGLING MACHINES (Hand and Power)—

Smith & Paget, Crown Works, Keighley.

WEED KILLER—

Acme Chemical Co., Ltd., Tonbridge, Kent, and Bolton, Lancs.

The "Acme" Weed Killer permanently destroys Weeds and Scrubs growing upon walks, roads, &c., by one application.

WEIGHING MACHINES—

Henry Pooley & Son, Ltd., 11, Temple-street, Birmingham.

WELDED & RIVETTED STEEL PIPES, CHIMNEYS, TANKS, &c.—

Thomas Piggott & Co., Limd., Spring Hill, Birmingham. Full particulars on application.

WIRE ROPE AND ROPEWAYS—

Bullivant & Co., Limited, 72, Mark-lane, London, E.C.

Wire Ropes for all purposes. Aerial Ropeways, Suspension Bridges, &c.

WOOD BLOCK FLOORING—Goddard & Sons, Patent Wood Block Flooring Works, Farnham, Surrey.

WOOLLEN CLOTH MANUFACTURERS—

Apperly, Curtis & Co., Limited, Dudbridge Mills, Stroud, Glos.

Vicunas, Serges, Overcoatings, Suitings, &c., &c. 21 Gold Medals and Highest Awards.

Memoranda of Reference, &c.

As Addresses, Quotations, and other matters of Interest.

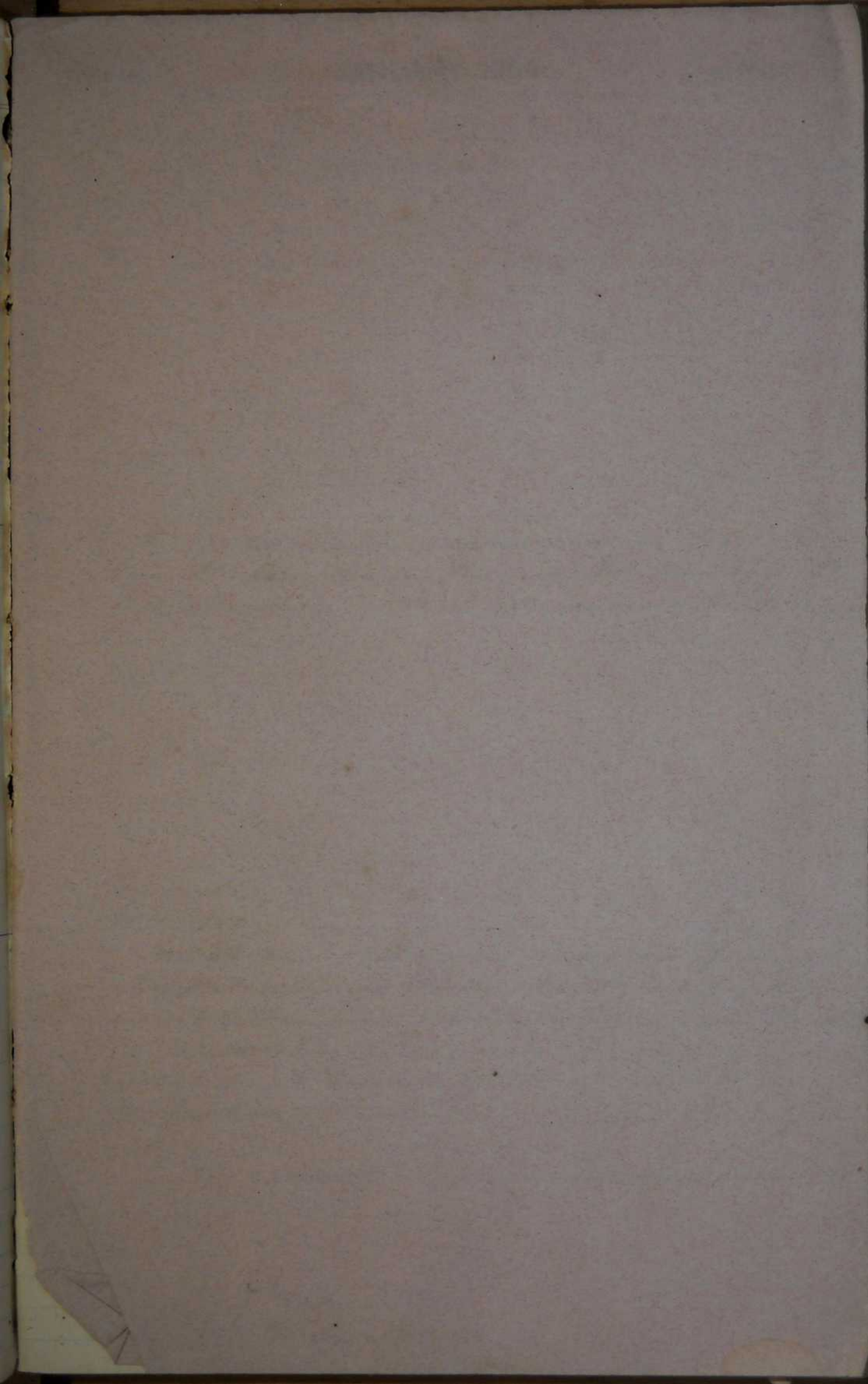
Memoranda of Things Lent, &c.

Date.

Article.

To whom Lent.

Returned.



DR. J. COLLIS BROWNE'S CHLORODYNE

**Coughs,
Colds,**



**Asthma,
Bronchitis.**

THE ORIGINAL AND ONLY GENUINE.

CHLORODYNE is admitted by the profession to be the most wonderful and valuable remedy ever discovered.

CHLORODYNE is the best remedy known for Coughs, Colds, Consumption, Bronchitis, Asthma.

CHLORODYNE effectually checks and arrests those too often fatal diseases: Diphtheria, Fever, Croup, Ague.

CHLORODYNE acts like a charm in Diarrhoea, and is the only specific in Cholera and Dysentery.

CHLORODYNE effectually cuts short all attacks of Epilepsy, Hysteria, Palpitation, and Spasms.

CHLORODYNE is the only palliative in Neuralgia, Rheumatism, Gout, Cancer, Toothache, Meningitis.

THE ILLUSTRATED LONDON NEWS OF SEPT. 28, 1895, SAYS:

"If I were asked which single medicine I should prefer to take abroad with me, as likely to be most generally useful, to the exclusion of all others, I should say CHLORODYNE. I never travel without it, and its general applicability to the relief of a large number of simple ailments forms its best recommendation."

None genuine without the words "Dr. J. Collis Browne's Chlorodyne" on the Government Stamp. Overwhelming Medical testimony accompanies each bottle. Of all Chemists, 1/1, 2/6, and 4/6.

Sole Manufacturers: J. T. DAVENPORT, Ltd., LONDON.

PARIS, 1900.

HIGHEST POSSIBLE AWARD.

JOSEPH GILLOTT'S

THE ONLY 'GRAND PRIX' PENS
Exclusively Awarded for Steel Pens.

Nos. FOR BANKERS:—Barrel Pens, 225, 226, 262. Slip Pens, 332, 909, 287, 166, 404, 7000. In Fine, Medium, and Broad Points. The turned-up point, 1032.

6d. boxes of any No. 6d. boxes, Samples, 24 Slip or 7 Barrel Pens.

VICTORIA WORKS, BIRMINGHAM, ENGLAND.

THE CANCER HOSPITAL (FREE), Fulham Road, London, S.W.

THE only Special Hospital for poor persons afflicted with this fearful disease who are admitted FREE on their own application alone. Upwards of 100 Beds, of which a number are provided for the use of patients who may remain for Life. Out-Patients seen daily at Two o'clock, except Sundays.

Subscriptions and Donations urgently solicited.

Bankers: Messrs. COULTS & Co., Strand, W.C.

FRED. W. HOWELL, Secretary.

ACCIDENT INSURANCE COMPANY

(Limited).

Accidents

Disease

Fidelity Guarantees

Workmen's Compensation

Plate Glass

Burglary

Founded 1849. Claims paid, £1,000,000.

Apply for Particulars and Rates for Insurance.

10, ST. SWITHIN'S LANE, LONDON, E.C.

THOS. POTTER, Manager and Secretary.

GALEDONIAN INSURANCE COMPANY.

FIRE

Founded
1805.

LIFE

LONDON—82, KING WILLIAM STREET, E.C.

NATIONAL PROVIDENT INSTITUTION

FOR MUTUAL LIFE ASSURANCE.

ESTABLISHED 1835.

Accumulated Fund nearly	- - - - -	£25,900,000
Paid in Claims more than	- - - - -	£11,750,000.

PROFITS.—These are divided every five years solely amongst the Assured.

Already divided, £6,160,000.

At the 1902 Division a Cash Profit of £761,602 was apportioned amongst the Members, being considerably more than one third of the amount paid in Premiums during the previous five years.

ENDOWMENT—ASSURANCE.

Policies are issued, combining Life Assurance at minimum cost, with provision for old age, and are singularly advantageous.

48, GRACECHURCH STREET, LONDON, E.C.

ARTHUR SMITHER, Actuary and Secretary.

APPLICATIONS FOR AGENCIES INVITED.

To get the Best Results from
your Machine, use our

PARAGON TYPEWRITER RIBBONS

... AND ...

CARBONIC PAPERS.

Highest grade at lowest prices.

In all Colors.

For all Machines.



Send for Samples and Prices to
Lamson Paragon Supply Co. (1902) Ltd.

4, QUEEN STREET, LONDON, E.C.

Works: CANNING TOWN, E.

Telephone 5825, Bank.

WHELPTON'S PILLS

W
W
W
W

AGE
WAR
WITH

INDIGESTION,
CONSTIPATION,
HEADACHE,
BILE.

OF ALL CHEMISTS—
7½d., 1s 1½d and 2s 9d
3166

THE CERES SYSTEM (VERNON'S PATENTS)

TIMES.—"By this system the most complex body of documents can be arranged with admirable simplicity."



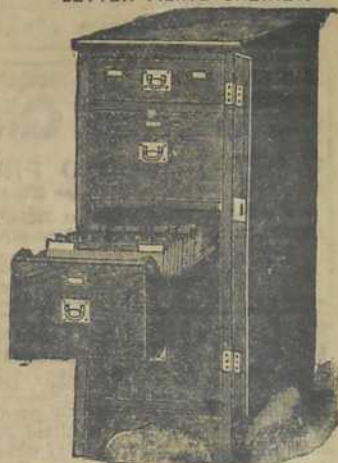
**THE
CHEAPEST
FILE
IN THE
MARKET.**

THE CERES VERTICAL FILING SYSTEM

For Correspondence and Papers of all sizes and on the largest scale. Existing drawers also fitted and guides supplied for Banks, Insurance Offices, and Commercial Houses for classifying all sorts of papers, vouchers, share transfers, &c.

Correspondence or interview solicited.

LETTER FILING CABINET.



For other varieties and sizes of Box Files, Cabinets, Tables, &c., see Catalogue.

THE CERES CARD SYSTEM.

CARD CABINETS ON A LARGE OR SMALL SCALE AND WITH LATEST IMPROVEMENTS.

CARDS OR LOOSE SHEETS ARE USED:—

For lists of Agents, Customers, Shareholders, Subscription Registers for Societies, Hospitals, Clubs, &c., in place of cumbersome alphabetical or classified books which mean ever-recurring labour and expense for re-arrangement and re-writing into new books.

Call and examine the system, or send for Explanatory Pamphlet (post free), quoting this Diary.

THE CERES DEPOT, 10, JOHN STREET, ADELPHI, W.C.
(Opposite the Society of Arts and close to Charing Cross.)

WRITE TO THE MANUFACTURERS:—

BAYLISS, JONES & BAYLISS, LTD

**BOLTS, NUTS,
RAILWAY AND TRAMWAY
FASTENINGS,
TIE-BARS GALVANISED TELEGRAPH POLES.**



**SCREWS,
DOG-
SPIKES,
FISH-
BOLTS,
&c., &c.**



**THE
"EUREKA"
LOCK-NUT.**

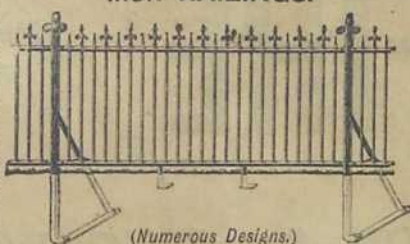


**AT
LOW
PRICES.**

*Complete
List Free.*

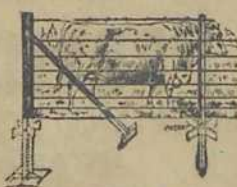


IRON RAILINGS.



(Numerous Designs.)

WIRE FENCING.

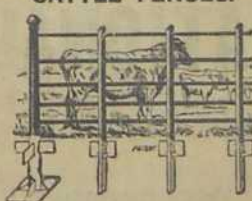


GATES, &c.

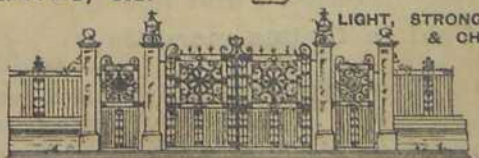
TREE-GUARDS



CATTLE FENCES.



**LIGHT, STRONG
& CHEAP.**



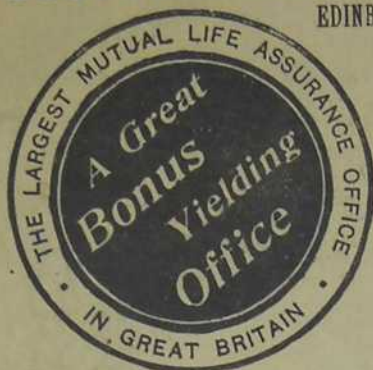
ILLUSTRATED CATALOGUE OF ALL KINDS OF HURDLES, FENCING, GATES, &c., FREE.
VICTORIA WORKS, WOLVERHAMPTON.
LONDON OFFICES AND SHOW ROOMS—139 & 141, CANNON STREET, E.C.

**WROUGHT
IRON
BARROWS.**



THE SCOTTISH WIDOWS' FUND LIFE ASSURANCE SOCIETY

EDINBURGH: 9, ST. ANDREW SQUARE. LONDON: 28, CORNHILL & 5, WATERLOO PL.



ESTABLISHED 1815.

Compound Bonuses, i.e. Bonuses on Original Sums Assured and Bonuses in force, were declared at last Division of Profits on 31st Dec. 1901, as under:—

£1:14s. per cent. per annum for the seven years 1895 to 1901, or from £1:14s. to £5:4:9d. per cent. per annum on Original Sums, according to duration of the Policy.

£1:12s. per cent. per annum for the seven years to next division in 1908, or from £1:12s. to £5:10:5d. per cent. per annum on Original Sums, according to duration.

FUNDS, £16,500,000. REVENUE, £1,700,000.

THE COMPENSATION & GUARANTEE FUND

LIMITED.

Subscribed Capital, £150,000.
Paid up " £45,000.

WORKMEN'S COMPENSATION, and all kinds of ...
ACCIDENT INSURANCE and FIDELITY GUARANTEES undertaken.

For dealing with Tramways, Light Railways, Motor Cars, Drivers' and other Third Party Risks, the Company has exceptional facilities.

CONSIDERATION GIVEN TO ANY OTHER ASSESSABLE CONTINGENCY.
Vacancies for efficient Inspectors.
JOHN HENRY SCOTT, Managing Director.

BRITISH WORKMAN'S AND GENERAL ASSURANCE CO., LTD.

Established 1866.

INDUSTRIAL & ORDINARY BRANCHES.

Annual Income at rate of £900,000.
Reserve Funds over £1,000,000.
Claims Paid exceed £3,500,000.

APPLICATIONS FOR AGENCIES INVITED.

Gentlemen able to influence good business will find the Company's Agency Terms very remunerative.

Full Prospectuses and Terms on application to—

Chief Offices: S. J. PORT, Secretary.

BROAD STREET CORNER, BIRMINGHAM.

THE GANESH FLOUR MILLS CO., LTD., DELHI.

Capital - - - - - Rs. 4,00,000.
Protective Funds, over - - - Rs. 2,00,000.

CAPACITY, 22 SACKS AN HOUR.
FINEST FLOUR IN INDIA.

Gold and Silver Medals and Certificates from Industrial Exhibitions.

Largest Mill in India. Sales over 4,00,000 maunds = 2,86,000 cwt. a year. Correspondence invited with intending purchasers throughout the World.

For further particulars, apply to—

KISHUN CHUND, Managing Director.

NORWICH UNION.

Founded 1808.

MUTUAL LIFE OFFICE.

STRONG RESERVES combined with LARGE BONUSES.

Claims Paid exceed £22,000,000.

INSURANCE
FOR
THE YOUNG.

Special
New Tables
with
Attractive
Options.

PROVISIONS
FOR
OLD AGE.

Full Particulars and every Information on application—
Head Office: (Dept. L), NORWICH.

Established 1824.

Bonus Year, 1904.

SCOTTISH UNION AND NATIONAL INSURANCE COMPANY.

CAPITAL - SIX MILLIONS STERLING.

Life Policies in force, Eleven Millions Sterling.
Funds exceed Five Millions Sterling.

LIFE ASSURANCE.—Under the LIFE ASSURANCE SYSTEM of this Company, the Assured obtain every privilege and advantage which experience has suggested as possible, added to the safety of dealing with a Company of over 75 YEARS' standing, possessing large ACCUMULATED FUNDS.

FIRE INSURANCE.—Almost all descriptions of Property Insured on the most favourable terms.

LONDON.

3, KING WILLIAM STREET, E.C.

GLASGOW.

150, WEST GEORGE STREET.

Head Office, 35, ST. ANDREW SQUARE, EDINBURGH.

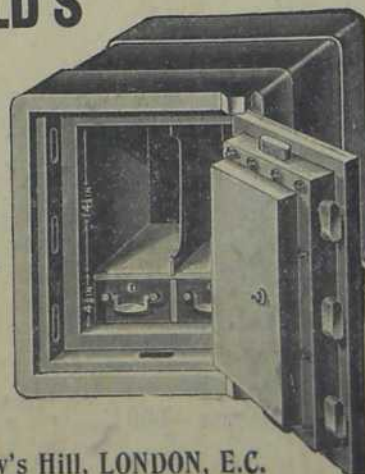
WHITFIELD'S SAFES

AND

STEEL DOORS.

Works:

BIRMINGHAM.



11-12, St. Andrew's Hill, LONDON, E.C.

The

Remington

YOU cannot afford
to do your writing
in the old way!

AFFORDS

THE NEW
WAY.

Typewriter.

Telephone Nos. 5545 & 5546 Avenue.

100, Gracechurch Street, E.C.

263, Oxford Street, W. (West-End Branch).

GEORGE SMYTHE & SON,
Paper Makers and Contractors,
ST. BARTHOLOMEW HOUSE, 90-93, FLEET STREET, LONDON.
(Formerly of 46, Cannon Street, E.C.)

SUPERFINE, FINE, AND COMMON PRINTINGS.

ALSO
FRICTION GLAZED AND SUPER CALENDERED PRINTING FOR PROCESS WORK.

White and Tinted News in Webs and Sheets Fine Art Papers.

ENGINE-SIZED AND TUB-SIZED WRITING PAPERS.

Azure Laid and Yellow Woves, and every Description of Papers for Account Books.

ENGLISH AND FOREIGN TINTED WRITINGS AND PRINTINGS.

Telephone: Holborn 1887.

Telegrams: "CULVERKEY, LONDON."

Also GLASGOW and PARIS.



No Breakfast Table
complete without

EPPS'S

GRATEFUL-COMFORTING

OOOOOA

The Most Nutritious
and Economical.

NORTHERN ASSURANCE COMPANY.

ESTABLISHED 1836.

LONDON: 1, Moorgate Street, E.C.

ABERDEEN: 1, Union Terrace.

INCOME AND FUNDS (1902).

Fire Premiums	£960,000
Life Premiums	267,000
Interest	220,000
Accumulated Funds	£6,227,000