

ROUGH DIARY

WITH A WEEK - IN AN

OR

1907

Price 6s. 6d.

Illustrated by

An Edition of the

Letts's Diary

Letts's Diary

CASSELL & COMPANY, LTD.

TELEGRAMS FOR

AUSTRALASIA, CHINA, AFRICA, INDIA, SPAIN;
PORTUGAL, THE MEDITERRANEAN,
AND SOUTH AMERICA

Liverpool:
K13, Exchange Buildings
Manchester:
29, Brown Street.
Glasgow:
5, Royal Bank Place.
Newcastle-on-Tyne:
K, Exchange Buildings,
Quayside.
Cardiff:
33, Merchants' Exchange
Bute Docks.

"Via Eastern"

STATIONS:-

London:

11, Old Broad St., E.C.
5, Leadenhall St., E.C.
3, St. Tower St., E.C.

37, Holborn Viaduct, E.C.
4, Electric House, Finsbury Pavement, E.C.
The Baltic Exchange, St. Mary Axe, E.C.
41 and 42, Parliament Street, S.W.
Foreign Auction Hall, Covent Garden, W.C.
44, West Strand, W.C.

AND FROM ALL POSTAL TELEGRAPH OFFICES.

NORWICH UNION

FIRE OFFICE.

FOUNDED 1797

PREMIUM IN
LOSSES PAID

Lowest
Prospectuses at

INDO-E

DIRECT OVERSEA

Connected

S. RUSSIA,
PERSIA,
and

Wheatstone
without intermediaries

FLUIDO LITTLE - El que mide ensaye
El más eficaz - El más barato de su clase

Equivalencias

DE LAS
PESAS Y MEDIDAS

PESAS

| ARGENTINAS:- | INGLESAS:- |
|-------------------------|-----------------------|
| 1 Onza 28.71 grm | 1 Onza .. 28.35 grm. |
| 1 Libra .. 459.4 " | 1 Libra .. 453.6 " |
| 1 Arroba ... 11,485 kls | 1 Quarter - 12.7 kls. |
| 1 Quintal ... 45,940 " | 1 Cwt. ... 50.802 " |
| 20 Quintales - 918.8 " | 1 Ton ... 1016.05 " |

MÉTRICAS

| | |
|------------------------|---------------------------|
| Kilo - 2.177 lb. argen | 1000 Kls - 21.77 qq. arg. |
| " - 2.205 lb. ingles | 1000 " - 19 Cwt 77 lbs. |

MEDIDAS

| ARGENTINAS:- | INGLESAS:- |
|---------------------------|-----------------------------|
| 1 Vara - 86.6 cent. | 1 Pulgada - 2.53 centm |
| 150 "(fed.) - 129.90 mts. | 1 Pie ... - 30.5 " |
| 40 "(3d(1 leg) - 6.196 " | 1 Yarda ... - 91.4 " |
| 1 Legua - 3m. 102.57 m | 1760 yar. 1609.31 m |
| 1 Vara c - 0.7499 mcd | 1 Var. cdr - 1.115 v. rd. |
| 1 Cuadr. c - 16874 " | 1 Acre ... - 0.4047 hect |
| 1 Legua - 2399.84 hect | 1 Squar. mil - 258.99 " |
| 1 Cuartilla - 34.299 litr | 40 Cub. feet - 1.133 mtsc |
| 1 Fanega - 137.197 " | 1 Gallon ... - 4.543 litros |
| 1 " - 3.775 Bushel | 1 Bushel ... - 36.35 " |
| 1 Cuarta - 0.5038 lts. | 1 Quarter - 2.9078 hett |
| 1 Galón - 3.8 " | " - 2.1194 fans. |

1,170,000
9,920,000

ses.

Agencies.

ANY, LTD.

ON:

11, Broad Street, E.C.
1, Lime Street
1, Square, E.C.
11, Mincing Lane, E.C.

POOL:

an Ho., 6, Water St.

HESTER:

y Chairlers,
Clarence Street.
ny Postal Telegraph
Station.

AN INTRODUCTION

WILL RESULT
- IN A -

REPEAT ORDER



TYPEWRITER SUPPLIES

CLEAR, sharp, good-looking letters are impossible except through using reliable Typewriter Ribbons and Carbon Papers. Paragon Ribbons give beautiful impressions, do not clog the type, and colors are absolutely permanent. Paragon Carbon Papers are clean to handle, economical in use, and give satisfaction to the most discriminating users. In use in many Govt. and Colonial Offices. Prices and samples on request

LAMSON PARAGON SUPPLY COMPANY, L'T'D
DEPT. 20, 4 ST. PAUL'S CHURCHYARD, LONDON, E.C.

THE LARGEST FIRE OFFICE IN THE WORLD.

FIRE

ROYAL INSURANCE BUILDINGS,
1, NORTH JOHN STREET,
LIVERPOOL.



LIFE

ROYAL INSURANCE BUILDINGS,
28, LOMBARD STREET,
LONDON.

TOTAL FUNDS
OVER
£13,000,000.

ANNUAL INCOME
OVER
£4,100,000.

Absolute Security.

Moderate Rates of Premium.

Liberal Policy Conditions.

SUN FIRE OFFICE

The Oldest Insurance Office in the World.

HEAD OFFICE:

63, Threadneedle Street, London, E.C.

BRANCH OFFICES IN LONDON:

60, CHANCERY CROSS, S.W.

333, OXFORD STREET (CORNER OF VERT STREET), W.

140, CHANCERY LANE (LAW COURTS BRANCH), W.C.

42, MINING LANE, E.C.

COUNTRY BRANCHES:

BIRMINGHAM—10, BENNETT'S HILL

BRISTOL—SUN BUILDINGS, CLARE STREET

CARDIFF—2, CHURCH STREET.

LEEDS—15, PARK ROW

BRADFORD—EXCHANGE BUILDINGS,

MARKET STREET.

HUDDERFIELD—STATION STREET.

HULL—32, HIGH STREET.

LIVERPOOL—6, CHAPEL STREET.

MANCHESTER—84, KING STREET.

NEWCASTLE-ON-TYNE—COLLIERWOOD STREET.

PLYMOUTH—SPONER'S CORNER.

EDINBURGH—40, PRINCES STREET.

ABERDEEN—40A, UNION STREET (sub-branch).

GLASGOW—42, RENFIELD STREET.

DUBLIN—12, TRINITY STREET.



FUNDS IN HAND - - - £2,788,638.

THE STANDARD LIFE ASSURANCE COMPANY.

ESTABLISHED 1825.

| | | | | | |
|-------------------|---|---|---|---|--------------|
| REVENUE | - | - | - | - | £1,450,000. |
| BONUS DECLARED | - | - | - | - | £7,000,000. |
| ACCUMULATED FUNDS | - | - | - | - | £11,300,000. |
| CLAIMS PAID | - | - | - | - | £24,375,000. |

BRANCH OFFICES & AGENCIES in THE BRITISH COLONIES, INDIA, and other countries.

EDINBURGH: Head Office, 3, George St. LONDON: 83, King William St., E.C.; & 3, Pall Mall East, S.W. DUBLIN: 59, ...

TWO IN ONE



WRITING and copying a letter, order or invoice in a **Plie Book** is a two-in-one operation. While you write you copy, and while you copy you write. When finished you tear out the **pen-and-ink-written original**, enclose it in an envelope and post it. The duplicate remains in the book for reference, and is clear, legible and permanent.

Plie Books are made in several sizes, with 100 or 250 originals and duplicates in each book, numbered in duplicate, substantially bound and indexed for reference. Prices and samples sent on application.

LAMSON PARAGON SUPPLY COMPANY, L.T'D
DEPT. 20, PARAGON WORKS, CANNING TOWN, E., LONDON, ENGLAND

BRITISH LAW FIRE INSURANCE COMPANY,

LIMITED,
5, LOTHBURY, LONDON, E.C.

(With Branches throughout the Kingdom.)

Subscribed Capital - { ONE MILLION
STERLING.

Gentlemen in a position to introduce Business are
invited to undertake Agencies within the
United Kingdom.

No Foreign Business undertaken.

WESTERN ASSURANCE CO.

Incorporated 1851.

Head Office - - - TORONTO.

PAID-UP CAPITAL, £300,000. | TOTAL CASH ASSETS, £600,719.
TOTAL LOSSES PAID, £8,978,070.

FIRE. MARINE.

BRITISH AND FOREIGN OFFICES:

2, Change Alley, Cornhill, London, E.C.

BRANCH OFFICES:

100, King Street, Manchester. | 10, Victoria Square, Birmingham.
144, St. Vincent Street, Glasgow. | Posters Chambers, Small Street, Bristol.
20, Mosley Street, Newcastle-on-Tyne. | 1, Pittsbury Street, Liverpool.

Fire and Marine Insurances at Home and Abroad granted at Current Rates.
CLAIMS PROMPTLY AND LIBERALLY SETTLED.

(Directors)

RT. HON. SIR J. H. KENNEDY, BART., C.B., M.P.
ALFRED COOPER, Esq. (Messrs. Guthrie & Co.).
SIR E. CARLE (Messrs. Burt & Co.).

Applications for Agencies at Home and Foreign Towns invited.

W. B. MEIKLE, Manager.

THE TYPEWRITER FOR BEAUTIFUL WORK.

Has no Ribbon. Its types strike direct on to the paper, giving beautifully clear outlines.

SIMPLE

YOST

STRONG

MACHINES ON HIRE.

COPYING WORK UNDERTAKEN.

SHORTHAND TYPISTS SUPPLIED.

Send for Illustrated Booklet which gives full details.

THE YOST TYPEWRITER CO., LTD., 50, Holborn Viaduct, London, E.C.

CHIC: 161, Cannon Street, E.C.

WEST EXD: 209, Oxford Street, W.

Doctor:—

"Out of

"tion—

ou re-

re is

NO'S

FRUIT

SALT

—Always

keep a bottle

handy."

A WAYSIDE CONSULTATION.



THE DIAGNOSIS.

The effect of
ENO'S
FRUIT SALT
upon any
disordered,
sleepless, or
feverish con-
dition, is
simply
marvellous.
It is Nature's
Remedy and
unsurpassed.

Letts's

INDIAN AND COLONIAL

DIARY AND ALMANAC

FOR

1907

BEING THE SEVENTH YEAR OF THE REIGN OF HIS MAJESTY KING EDWARD VII.—(Accession, January 22, 1901.)

FOLIO SERIES.

| No. | | | | | | Plain. | | Inter-Blotting. | | Blotting Cloth. | |
|--------|---|----|----|----|-------------|--------|----|-----------------|----|-----------------|----|
| | | | | | | s. | d. | s. | d. | s. | d. |
| No. 31 | Week in opening .. | .. | .. | .. | .. | 1 | 6 | 2 | 6 | 4 | 6 |
| " 32 | Week on page (pages divided perpendicularly) .. | .. | | | | — | | 1 | 6 | — | |
| " 37 | Week on page .. | .. | .. | .. | cloth back | — | | 1 | 0 | — | |
| " 39 | Week in opening .. | .. | .. | .. | cloth back | — | | 1 | 6 | — | |
| " 41 | One day on page .. | .. | .. | .. | cloth back | 5 | 0 | — | | — | |
| " " | One day on page .. | .. | .. | .. | bound cloth | 6 | 6 | (| | 8 | 0 |
| " 42 | Two days on page .. | .. | .. | .. | cloth back | 3 | 0 | — | | — | |
| " " | Two days on page .. | .. | .. | .. | bound cloth | 4 | 0 | — | | 5 | 0 |
| " 48 | Two days on page .. | .. | .. | .. | cloth back | — | | 3 | 6 | — | |

PUBLISHED FOR

LETTS'S DIARIES COMPANY, LIMITED

BY

CASELL & COMPANY, LIMITED,

LONDON, PARIS, NEW YORK AND MELBOURNE.

[ALL RIGHTS RESERVED.]

Letts's Diaries can be obtained at all the Principal Booksellers throughout the World.

For a Full Description whereby to obtain a Counterpart of this Diary, see Order Form.

Harold, Watson & Son, Ltd., Printers, London & Adelaide.

CALENDAR FOR 1907.

JANUARY, 1907. FIRST MONTH—THIRTY-ONE DAYS.

| M. W. Y. | SUNDAYS, &c. | High Water at Lion Bridge, A.M. 1 P.M. |
|----------|---------------------------|--|
| 1 Tu. | 1 Circumcision, New | 2 50 3 7 |
| 2 W. | 2 [Year's Day] | 3 25 3 42 |
| 3 Th. | 3 | 4 0 4 18 |
| 4 F. | 4 | 4 36 4 53 |
| 5 S. | 5 | 5 12 5 31 |
| 6 S. | 6 Epiphany, Twelfth Day. | 5 52 6 13 |
| 7 M. | 7 | 6 37 7 3 |
| 8 Tu. | 8 | 7 30 8 1 |
| 9 W. | 9 | 8 34 9 5 |
| 10 Th. | 10 | 9 43 10 10 |
| 11 F. | 11 | 10 55 11 30 |
| 12 S. | 12 | — 0 3 |
| 13 S. | 13 1 after Epiphany | 0 34 1 1 |
| 14 M. | 14 | 1 28 1 55 |
| 15 Tu. | 15 | 2 21 2 40 |
| 16 W. | 16 | 3 11 3 35 |
| 17 Th. | 17 | 3 58 4 21 |
| 18 F. | 18 | 4 44 5 6 |
| 19 S. | 19 | 5 27 5 47 |
| 20 S. | 20 2 after Epiphany | 6 9 6 32 |
| 21 M. | 21 | 6 54 7 17 |
| 22 Tu. | 22 King's Accession, 1901 | 7 42 8 9 |
| 23 W. | 23 | 8 38 9 11 |
| 24 Th. | 24 Proc. King Edward VII. | 9 49 10 27 |
| 25 F. | 25 Conversion of St. Paul | 11 21 11 35 |
| 26 S. | 26 | — 0 6 |
| 27 S. | 27 Septuagesima Sunday | 0 35 0 59 |
| 28 M. | 28 | 1 21 1 42 |
| 29 Tu. | 29 | 2 1 2 19 |
| 30 W. | 30 | 2 37 2 53 |
| 31 Th. | 31 | 3 9 3 26 |

FEBRUARY, 1907. SECOND MONTH—TWENTY-EIGHT DAYS.

| M. W. Y. | SUNDAYS, &c. | High Water at Lion Bridge, A.M. 1 P.M. |
|----------|-------------------------------|--|
| 1 S. | 1 | 3 32 |
| 2 F. | 2 | 3 33 |
| 3 S. | 3 Purification of V. Mary | 3 44 4 2 |
| 4 M. | 4 | 4 20 4 37 |
| 5 Tu. | 5 | 4 55 5 12 |
| 6 W. | 6 | 5 31 5 51 |
| 7 Th. | 7 | 6 12 6 35 |
| 8 F. | 8 | 6 59 7 25 |
| 9 S. | 9 | 7 53 8 24 |
| 10 M. | 10 | 8 49 9 43 |
| 11 Tu. | 11 | 10 27 11 7 |
| 12 W. | 12 | 11 46 — |
| 13 Th. | 13 | 0 23 0 54 |
| 14 F. | 14 | 1 42 1 50 |
| 15 S. | 15 Ash Wednesday | 2 15 2 37 |
| 16 M. | 16 Mohammedan Year | 2 59 3 21 |
| 17 Tu. | 17 | 3 43 4 3 |
| 18 W. | 18 | 4 23 4 42 |
| 19 Th. | 19 2 in Lent, Ember Week | 5 0 5 18 |
| 20 F. | 20 | 5 36 5 54 |
| 21 S. | 21 | 6 13 6 33 |
| 22 M. | 22 | 6 53 7 14 |
| 23 Tu. | 23 | 7 39 8 8 |
| 24 W. | 24 | 8 41 9 20 |
| 25 Th. | 25 | 10 4 10 46 |
| 26 F. | 26 2 in Lent, S. Matthias, A. | 11 24 11 58 |
| 27 S. | 27 | — 0 30 |
| 28 M. | 28 | 0 55 1 18 |
| 29 Tu. | 29 | 1 38 1 58 |
| 30 W. | 30 | 2 16 2 33 |

MARCH, 1907. THIRD MONTH—THIRTY-ONE DAYS.

| M. W. Y. | SUNDAYS, &c. | High Water at Lion Bridge, A.M. 1 P.M. |
|----------|---------------------------|--|
| 1 F. | 1 St. David | 2 49 3 6 |
| 2 S. | 2 | 3 22 3 39 |
| 3 S. | 3 2 in Lent | 3 57 4 15 |
| 4 M. | 4 | 4 34 4 52 |
| 5 Tu. | 5 | 5 10 5 28 |
| 6 W. | 6 | 5 48 6 10 |
| 7 Th. | 7 | 6 34 6 59 |
| 8 F. | 8 | 7 28 8 1 |
| 9 S. | 9 | 8 39 9 25 |
| 10 S. | 10 3 in Lent | 10 13 10 57 |
| 11 M. | 11 | 11 39 — |
| 12 Tu. | 12 | 0 17 0 48 |
| 13 W. | 13 | 1 14 1 39 |
| 14 Th. | 14 | 2 1 2 22 |
| 15 F. | 15 | 2 41 3 0 |
| 16 S. | 16 | 3 19 3 38 |
| 17 S. | 17 5 in Lent, St. Patrick | 3 59 4 14 |
| 18 M. | 18 | 4 36 4 46 |
| 19 Tu. | 19 | 5 3 5 19 |
| 20 W. | 20 | 5 35 5 53 |
| 21 Th. | 21 | 6 12 6 32 |
| 22 F. | 22 | 6 55 7 21 |
| 23 S. | 23 | 7 52 8 25 |
| 24 S. | 24 Palm Sunday | 9 7 9 53 |
| 25 M. | 25 Annunciation | 10 39 11 19 |
| 26 Tu. | 26 | 11 51 — |
| 27 W. | 27 | 12 22 0 46 |
| 28 Th. | 28 Maundy Thursday | 1 7 1 27 |
| 29 F. | 29 Good Friday | 1 47 2 5 |
| 30 S. | 30 Easter Even | 2 21 2 37 |
| 31 S. | 31 Easter Day | 3 54 3 12 |

APRIL, 1907. FOURTH MONTH—THIRTY DAYS.

| M. W. Y. | SUNDAYS, &c. | High Water at Lion Bridge, A.M. 1 P.M. |
|----------|----------------------|--|
| 1 M. | 1 Easter Monday | 3 31 3 49 |
| 2 Tu. | 2 Easter Tuesday | 4 8 4 28 |
| 3 W. | 3 | 4 48 5 8 |
| 4 Th. | 4 | 5 31 5 54 |
| 5 F. | 5 | 6 19 6 42 |
| 6 S. | 6 | 7 18 7 52 |
| 7 S. | 7 Low Sunday—1 after | 8 30 9 17 |
| 8 M. | 8 [Easter] | 10 7 10 50 |
| 9 Tu. | 9 | 11 28 — |
| 10 W. | 10 | 0 4 0 32 |
| 11 Th. | 11 | 0 57 1 19 |
| 12 F. | 12 | 1 40 1 59 |
| 13 S. | 13 | 2 18 2 36 |
| 14 S. | 14 2 after Easter | 2 53 3 10 |
| 15 M. | 15 | 3 28 3 45 |
| 16 Tu. | 16 | 4 4 4 28 |
| 17 W. | 17 | 4 33 4 49 |
| 18 Th. | 18 | 5 3 5 22 |
| 19 F. | 19 | 6 41 6 6 |
| 20 S. | 20 | 6 24 6 48 |
| 21 S. | 21 11 1 after Easter | 7 15 7 47 |
| 22 M. | 22 | 8 23 9 3 |
| 23 Tu. | 23 St. George | 9 50 10 30 |
| 24 W. | 24 | 11 5 11 37 |
| 25 Th. | 25 St. Mark, Evan. | — 0 7 |
| 26 F. | 26 | 0 27 0 48 |
| 27 S. | 27 | 1 8 1 28 |
| 28 M. | 28 4 after Easter | 1 48 2 7 |
| 29 Tu. | 29 | 2 26 2 45 |
| 30 W. | 30 | 3 5 3 26 |

MAY, 1907. FIFTH MONTH—THIRTY-ONE DAYS.

| M. W. Y. | SUNDAYS, &c. | High Water at Lion Bridge, A.M. 1 P.M. |
|----------|-----------------------------|--|
| 1 W. | 1 SS. Philip & James, | 3 48 4 10 |
| 2 Th. | 2 [App.] | 4 33 4 55 |
| 3 F. | 3 | 5 17 5 42 |
| 4 S. | 4 | 6 11 6 40 |
| 5 S. | 5 Rogation Sunday | 7 14 7 49 |
| 6 M. | 6 Rogation Day | 8 27 9 8 |
| 7 Tu. | 7 Rogation Day | 9 51 10 29 |
| 8 W. | 8 Rogation Day | 11 31 12 7 |
| 9 Th. | 9 Ascension Day | — 0 5 |
| 10 F. | 10 | 0 31 0 53 |
| 11 S. | 11 | 1 14 1 35 |
| 12 S. | 12 1 Sunday after Ascension | 1 54 2 12 |
| 13 M. | 13 | 2 28 2 45 |
| 14 Tu. | 14 | 3 2 3 19 |
| 15 W. | 15 | 3 35 3 52 |
| 16 Th. | 16 | 4 8 4 25 |
| 17 F. | 17 | 4 42 4 59 |
| 18 S. | 18 | 5 16 5 37 |
| 19 S. | 19 139 Whit Sunday, Em. Wk. | 5 59 6 22 |
| 20 M. | 20 140 Whitsun Monday | 6 47 7 14 |
| 21 Tu. | 21 141 Whitsun Tuesday | 7 46 8 20 |
| 22 W. | 22 142 Ember Day | 8 58 9 37 |
| 23 Th. | 23 143 (Empire Day) | 10 12 10 44 |
| 24 F. | 24 Em. D. Queen Victoria | 11 14 11 43 |
| 25 S. | 25 144 Ember Day | — 0 7 |
| 26 S. | 26 145 Trinity Sunday | 0 31 0 53 |
| 27 M. | 27 | 1 15 1 36 |
| 28 Tu. | 28 | 1 58 2 19 |
| 29 W. | 29 | 2 43 3 7 |
| 30 Th. | 30 Corpus Christi | 3 31 3 54 |
| 31 F. | 31 | 4 18 4 44 |

JUNE, 1907. SIXTH MONTH—THIRTY DAYS.

| M. W. Y. | SUNDAYS, &c. | High Water at Lion Bridge, A.M. 1 P.M. |
|----------|-----------------------------|--|
| 1 S. | 1 | 5 11 5 37 |
| 2 S. | 2 153 1 after Trinity | 6 5 6 34 |
| 3 M. | 3 154 Prince of Wales born, | 7 4 7 30 |
| 4 Tu. | 4 155 [1865] | 8 10 8 45 |
| 5 W. | 5 | 9 22 9 57 |
| 6 Th. | 6 | 10 31 11 1 |
| 7 F. | 7 | 11 31 11 59 |
| 8 S. | 8 | — 0 24 |
| 9 S. | 9 160 2 after Trinity | 0 45 1 6 |
| 10 M. | 10 | 1 27 1 47 |
| 11 Tu. | 11 162 St. Barnabas, Ap. | 2 5 2 23 |
| 12 W. | 12 | 2 41 2 59 |
| 13 Th. | 13 | 3 16 3 32 |
| 14 F. | 14 | 3 49 4 6 |
| 15 S. | 15 | 4 23 4 41 |
| 16 S. | 16 167 3 after Trinity | 5 0 5 18 |
| 17 M. | 17 | 5 37 6 0 |
| 18 Tu. | 18 | 6 23 6 47 |
| 19 W. | 19 | 7 14 7 42 |
| 20 Th. | 20 | 8 1 8 42 |
| 21 F. | 21 | 9 18 9 52 |
| 22 S. | 22 | 10 24 10 54 |
| 23 S. | 23 174 4 after Trinity | 11 24 11 53 |
| 24 M. | 24 175 St. John Baptist | — 0 29 |
| 25 Tu. | 25 | 0 46 1 12 |
| 26 W. | 26 | 1 38 2 3 |
| 27 Th. | 27 | 2 22 2 56 |
| 28 F. | 28 | 3 22 3 46 |
| 29 S. | 29 180 St. Peter, Ap. | 4 12 4 37 |
| 30 S. | 30 181 5 after Trinity | 5 3 5 28 |

CHRONOLOGICAL NOTES.

| | | |
|----------|-----------------|------|
| Number 8 | Roman Indiction | 5 |
| ... 16 | Julian Period | |
| ... 12 | (year of) | 6620 |

ECLIPSES IN 1907.

Of the Sun, Two; of the Moon, Two.
I. JANUARY 14. Total Eclipse of the Sun. Visible as a partial eclipse in N.E. Africa, Eastern Europe, &c. except the N.E. of Siberia). The line of Total Eclipse passes from the N.W. of the Don Cossacks Province over the N.W. of the Caspian and S. of Aral to near Yarkand, thence through Mongolia to the N.E. of the Yablonoi mountains.
Eclipse begins .. 8 a.m. Long. Lat. 49°E. 48°N.
Totals .. 23 a.m. 49°E. 50°N.
.. ends .. 5 a.m. 131°E. 50°N.
At .. 11 a.m. 131°E. 50°N.
Madras 3h 47m a.m. 0h 32m p.m. Local
Hongkong 1h 59m p.m. 3h 45m p.m. Time.

II. JANUARY 29. Partial Eclipse of the Moon. Visible in N. America, the Pacific,

ECLIPSES—contd.

Asia, Australasia, and Eastern Europe.
Moon enters shadow 0h 6m p.m.
.. leaves .. 3h 10m p.m.
III. JULY 10. Annular Eclipse of the Sun. Partial eclipse visible in the S.E. of the Pacific, S. America, the S. Atlantic, Portuguese and German S.W. Africa. The path of Annular Eclipse crosses S. America from near Iquique to Victoria.
Eclipse begins .. 0h 33m p.m. Long. Lat. 50°S. 131°E.
Ann. .. 3h 53m p.m. 107°W. 38°S.
.. ends .. 4h 50m p.m. 7°W. 37°S.
.. 6h 47m p.m. 13°W. 2°S.
IV. JULY 25. Partial Eclipse of the Moon. Visible in Central and Western Europe, Africa, the Atlantic, America (except the N.W.), and the Eastern Pacific. Moon enters Shadow 3h 4m a.m.
.. leaves .. 5h 47m a.m.

NOTE.—The thin green, unless otherwise stated, are Greenwich Time. For Indian Time, add 5 hours; Damascus Time, add 6 hours; East Coast of China and Borneo, add 8 hours; Japan and the Philippines, add 9 hours.

THE ROYAL FAMILY.

Date of Birth, and Age in 1907.
King Edward VII. ... Nov. 9, 1841...66
Queen Alexandra ... Dec. 1, 1844...63
Prince of Wales ... June 3, 1864...43
(Married July 6, 1892, to Princess Victoria Mary of Teck, born May 26, 1867.)
Issue—Edward Albert ... June 23, 1894...13
.. Dec. 14, 1895...12
Victoria Alexandra ... April 23, 1897...10
Henry William ... March 21, 1900...7
George Edward ... Dec. 20, 1901...5
John Charles ... July 12, 1905...2
Princess Royal ... Feb. 20, 1867...40
(Married July 27, 1882, to the Duke of Fife.) 2 children.
Princess Victoria ... July 6, 1868...39
Princess Maud Charlotte (Queen of Norway) Nov. 26, 1869...38
(Married July 22, 1896, to Charles, King of Norway.) 1 child.
Princess Helena ... May 25, 1846...61
Princess Louise ... March 18, 1848...59
Duke of Connaught ... May 1, 1850...57
Princess Beatrice ... April 14, 1857...50

CALENDAR FOR 1907.

| JULY, 1907. SEVENTH MONTH—THIRTY-ONE DAYS. | | | | AUGUST, 1907. EIGHTH MONTH—THIRTY-ONE DAYS. | | | | SEPTEMBER, 1907. NINTH MONTH—THIRTY DAYS. | | | |
|---|---|--|-------|--|---|--|-------|--|-----------------------------------|--|-------|
| M. W. Y. | SUNDAYS, &c. | High Water at Lam. Bridge, A.M. P.M. | | M. W. Y. | SUNDAYS, &c. | High Water at Lam. Bridge, A.M. P.M. | | M. W. Y. | SUNDAYS, &c. | High Water at Lam. Bridge, A.M. P.M. | |
| 1 M. 182 | | 5 53 | 6 19 | 1 Th. 213 | | 7 1 | 7 26 | 1 S. 244 | 14 after Trinity | 7 57 | 8 29 |
| 2 Tu. 183 | | 6 46 | 7 13 | 2 F. 214 | | 7 51 | 8 19 | 2 M. 245 | | 9 58 | 9 52 |
| 3 W. 184 | | 7 41 | 8 10 | 3 S. 215 | | 8 48 | 9 23 | 3 Tu. 246 | | 10 34 | 11 11 |
| 4 Th. 185 | Declaration of American [Independence] | 8 39 | 9 11 | 4 S. 216 | 20 after Trinity | 10 1 | 10 39 | 4 W. 247 | | 11 44 | — |
| 5 F. 186 | | 9 45 | 10 18 | 5 M. 217 | | 11 13 | 11 46 | 5 Th. 248 | | 0 15 | 0 40 |
| 6 S. 187 | | 10 49 | 11 20 | 6 Tu. 218 | | — | 0 15 | 6 F. 249 | | 1 4 | 1 24 |
| 7 S. 188 | 6 after Trinity | 11 50 | — | 7 W. 219 | | 0 42 | 1 5 | 7 S. 250 | | 1 43 | 2 1 |
| 8 M. 189 | | 0 16 | 0 40 | 8 Th. 220 | | 1 27 | 1 47 | 8 S. 251 | 25 after Trinity | 2 17 | 2 32 |
| 9 Tu. 190 | | 1 2 | 1 24 | 9 F. 221 | Coronation of King [Edward VII., 1902] | 2 6 | 2 24 | 9 M. 252 | Jewish Year 5668 beg. | 2 47 | 3 3 |
| 10 W. 191 | | 1 45 | 2 6 | 10 Th. 222 | | 2 40 | 2 57 | 10 Tu. 253 | | 3 30 | 3 37 |
| 11 Th. 192 | | 2 24 | 2 44 | 11 S. 223 | 21 after Trinity | 3 13 | 3 30 | 11 W. 254 | | 3 55 | 4 14 |
| 12 F. 193 | | 2 58 | 3 14 | 12 Tu. 224 | | 3 47 | 4 4 | 12 Th. 255 | | 4 34 | 4 49 |
| 13 S. 194 | | 3 31 | 3 49 | 13 W. 225 | | 4 21 | 4 39 | 13 F. 256 | | 5 5 | 5 23 |
| 14 S. 195 | 7 after Trinity | 4 7 | 4 24 | 14 Th. 226 | | 4 55 | 5 12 | 14 S. 257 | | 5 44 | 6 7 |
| 15 M. 196 | | 4 43 | 5 1 | 15 Th. 227 | | 5 29 | 5 49 | 15 S. 258 | 16 after Trinity, Ember [Week] | 6 31 | 6 58 |
| 16 Tu. 197 | | 5 10 | 5 39 | 16 F. 228 | | 6 11 | 6 34 | 16 M. 259 | | 7 30 | 8 4 |
| 17 W. 198 | | 5 59 | 6 20 | 17 S. 229 | | 6 57 | 7 24 | 17 Tu. 260 | | 8 45 | 9 32 |
| 18 Th. 199 | | 6 42 | 7 6 | 18 S. 230 | 12 after Trinity | 7 53 | 8 27 | 18 W. 261 | Ember Day | 10 19 | 11 2 |
| 19 F. 200 | | 7 33 | 8 1 | 19 M. 231 | | 9 4 | 9 46 | 19 Th. 262 | | 11 42 | — |
| 20 S. 201 | | 8 31 | 9 4 | 20 Tu. 232 | | 10 28 | 11 8 | 20 F. 263 | Ember Day | 0 16 | 0 44 |
| 21 S. 202 | 8 after Trinity | 9 39 | 10 14 | 21 W. 233 | | 11 46 | — | 21 S. 264 | St. Matthew, Ap. Em. | 1 16 | 1 34 |
| 22 M. 203 | | 10 48 | 11 24 | 22 Th. 234 | | 0 22 | 0 52 | 22 S. 265 | 17 after Trinity | 2 55 | 2 15 |
| 23 Tu. 204 | | 11 39 | — | 23 F. 235 | | 1 20 | 1 46 | 23 M. 266 | | 3 36 | 3 50 |
| 24 W. 205 | | 0 29 | 0 57 | 24 S. 236 | St. Bartholomew, Ap. | 2 10 | 2 33 | 24 Tu. 267 | | 3 15 | 3 34 |
| 25 Th. 206 | St. James, Ap. | 1 26 | 1 53 | 25 S. 237 | 13 after Trinity | 2 59 | 3 18 | 25 W. 268 | | 3 53 | 4 11 |
| 26 F. 207 | | 2 20 | 2 47 | 26 M. 238 | | 3 49 | 4 2 | 26 Th. 269 | | 4 29 | 4 47 |
| 27 S. 208 | | 3 11 | 3 35 | 27 Tu. 239 | | 4 23 | 4 43 | 27 F. 270 | | 5 3 | 5 21 |
| 28 S. 209 | 9 after Trinity | 4 0 | 4 25 | 28 W. 240 | | 5 2 | 5 21 | 28 S. 271 | | 5 39 | 6 0 |
| 29 M. 210 | | 4 48 | 5 10 | 29 Th. 241 | | 5 39 | 5 58 | 29 S. 272 | 18 after Trinity, St. | 6 22 | 6 44 |
| 30 Tu. 211 | | 5 31 | 5 53 | 30 F. 242 | | 6 19 | 6 40 | 30 M. 273 | [Michael & All Angels] | 7 12 | 7 41 |
| 31 W. 212 | | 6 16 | 6 38 | 31 S. 243 | | 7 3 | 7 28 | | | | |

| OCTOBER, 1907. TENTH MONTH—THIRTY-ONE DAYS. | | | | NOVEMBER, 1907. ELEVENTH MONTH—THIRTY DAYS. | | | | DECEMBER, 1907. TWELFTH MONTH—THIRTY-ONE DAYS. | | | |
|--|----------------------------------|--|-------|--|----------------------------------|--|-------|---|--|--|-------|
| M. W. Y. | SUNDAYS, &c. | High Water at Lam. Bridge, A.M. P.M. | | M. W. Y. | SUNDAYS, &c. | High Water at Lam. Bridge, A.M. P.M. | | M. W. Y. | SUNDAYS, &c. | High Water at Lam. Bridge, A.M. P.M. | |
| 1 Tu. 274 | | 8 19 | 9 1 | 1 F. 305 | All Saints' Day | 10 22 | 10 56 | 1 S. 335 | 1 in Advent. Queen's [Alexandra born, 1841] | 20 29 | 10 58 |
| 2 W. 275 | | 9 50 | 10 32 | 2 S. 306 | | 11 26 | 11 53 | 2 M. 336 | | 11 27 | 11 52 |
| 3 Th. 276 | | 11 9 | 11 43 | 3 S. 307 | 23 after Trinity | — | 0 16 | 3 Tu. 337 | | — | 0 16 |
| 4 F. 277 | | — | 0 11 | 4 M. 308 | | 0 36 | 0 56 | 4 W. 338 | | 0 37 | 0 58 |
| 5 S. 278 | | 0 34 | 0 54 | 5 Tu. 309 | | 1 15 | 1 32 | 5 Th. 339 | | 1 19 | 1 40 |
| 6 S. 279 | 19 after Trinity | 1 13 | 1 31 | 6 W. 310 | | 1 49 | 2 8 | 6 F. 340 | | 2 2 | 2 23 |
| 7 M. 280 | | 1 48 | 2 4 | 7 Th. 311 | | 2 26 | 2 44 | 7 S. 341 | | 2 45 | 3 7 |
| 8 Tu. 281 | Ramadan (Turk. Lent) [begins] | 2 26 | 2 35 | 8 F. 312 | | 3 4 | 3 24 | 8 S. 342 | 2 in Advent | 3 31 | 3 55 |
| 9 W. 282 | | 2 52 | 3 10 | 9 S. 313 | King Edward VII. [born, 1841] | 3 44 | 4 5 | 9 M. 343 | | 5 10 | 5 16 |
| 10 Th. 283 | | 3 27 | 3 45 | 10 S. 314 | 24 after Trinity | 4 27 | 4 49 | 10 Tu. 344 | | 6 4 | 6 34 |
| 11 F. 284 | | 4 4 | 4 24 | 11 M. 315 | | 5 12 | 5 38 | 11 W. 345 | | 7 5 | 7 37 |
| 12 S. 285 | | 4 43 | 5 2 | 12 Th. 316 | | 6 7 | 6 39 | 12 Tu. 346 | | 8 9 | 8 44 |
| 13 S. 286 | 20 after Trinity | 5 22 | 5 47 | 13 W. 317 | | 7 13 | 7 49 | 13 F. 347 | | 9 21 | 9 57 |
| 14 M. 287 | | 6 13 | 6 41 | 14 Th. 318 | | 8 30 | 9 16 | 14 S. 348 | | 10 30 | 11 1 |
| 15 Tu. 288 | | 7 16 | 7 56 | 15 F. 319 | | 9 57 | 10 33 | 15 S. 349 | 3 in Advent, Emb. Wk. | 11 32 | — |
| 16 W. 289 | | 8 40 | 9 30 | 16 S. 320 | | 11 9 | 11 41 | 16 M. 350 | | 0 1 | 0 26 |
| 17 Th. 290 | | 10 16 | 10 56 | 17 S. 321 | 25 after Trinity | — | 0 6 | 17 Tu. 351 | | 0 48 | 1 10 |
| 18 F. 291 | St. Luke, Evan. | 11 33 | — | 18 M. 322 | | 0 29 | 0 52 | 18 W. 352 | Ember Day | 1 33 | 1 54 |
| 19 S. 292 | | 0 4 | 0 39 | 19 Th. 323 | | 1 51 | 2 9 | 19 Tu. 353 | | 2 12 | 2 29 |
| 20 S. 293 | 1st after Trinity | 0 53 | 1 14 | 20 W. 324 | | 2 27 | 2 45 | 20 F. 354 | Ember Day | 2 42 | 3 5 |
| 21 M. 294 | | 1 35 | 1 55 | 21 Th. 325 | | 3 2 | 3 19 | 21 S. 355 | St. Thomas, Ap. Em. | 3 22 | 3 39 |
| 22 Tu. 295 | | 2 14 | 2 32 | 22 F. 326 | | 3 37 | 3 55 | 22 S. 356 | 4 in Advent | 3 57 | 4 14 |
| 23 W. 296 | | 2 59 | 3 7 | 23 S. 327 | | 4 13 | 4 29 | 23 M. 357 | | 4 32 | 4 49 |
| 24 Th. 297 | | 3 25 | 3 43 | 24 S. 328 | 26 after Trinity | 4 45 | 5 3 | 24 Tu. 358 | | 5 7 | 5 27 |
| 25 F. 298 | | 4 1 | 4 18 | 25 M. 329 | | 5 23 | 5 44 | 25 W. 359 | Christmas Day | — | — |
| 26 S. 299 | | 4 34 | 4 50 | 26 Th. 330 | | 6 7 | 6 32 | 26 Th. 360 | St. Stephen, M. Boxing | — | — |
| 27 S. 300 | 22 after Trinity | 5 6 | 5 25 | 27 W. 331 | | 7 0 | 7 29 | 27 F. 361 | St. John, Evan. | — | — |
| 28 M. 301 | SS. Simon & Jude | 5 46 | 6 3 | 28 Th. 332 | | 8 2 | 8 36 | 28 S. 362 | Innocents' Day | — | — |
| 29 Tu. 302 | | 7 36 | 8 13 | 29 F. 333 | | 9 18 | 9 56 | 29 S. 363 | 1 after Christmas | — | — |
| 30 W. 303 | | 8 56 | 9 42 | 30 S. 334 | St. Andrew, Ap. | — | — | 30 M. 364 | | — | — |
| 31 Th. 304 | | — | — | 31 Tu. 335 | | — | — | 31 Tu. 365 | | — | — |

INDIAN GOVERNORS.

*India—Viceroy and Governor-General—The Rt. Hon. The Earl of Minto, G.M.S.I., G.M.I.E., G.C.M.G. (Rs. 20,900).

Madræs—Governor—Hon. Sir A. Lawley, G.C.I.E., K.C.M.G. (Rs. 10,000).

Bombay—Governor—Lord Lamington, G.C.M.G., G.C.I.E. (Rs. 10,000).

Bengal—Lieutenant-Governor—Sir A. H. Leith Fraser, K.C.S.I. (Rs. 8,333).

United Provinces of Agra and Oudh—Lieutenant-Governor—Sir J. D. La Touche, K.C.S.I. (Rs. 8,333).

Punjab—Lieutenant-Governor—Sir C. M. Rivaz, K.C.S.I. (Rs. 8,333).

Burmah—Lieutenant-Governor—Sir H. T. White, K.C.I.E. (Rs. 8,333).

* Salaries are (excluding allowances) stated in Rupees per mensem.

INDIAN GOVERNORS—contd.

Eastern Bengal and Assam—Lieutenant-Governor—Sir J. B. Fuller, K.C.S.I., C.I.E. (Rs. 8,333).

Central Prov.—Chief Commissioner—J. O. Miller, C.S.I. (Rs. 4,166).

TIDAL CONSTANTS.

The approximate standard time of High Water may be found by adding to, or subtracting from, the time of High Water at London Bridge, given in the calendar, the corrections given as below:—

| | h. m. |
|------------------------|-----------|
| Gibraltar | sub. 0 11 |
| Malta | sub. 1 32 |
| Karachi | sub. 3 33 |
| Bombay | sub. 3 44 |
| Goa | sub. 3 51 |
| Point de Galle | add. 0 19 |
| Madras | sub. 5 6 |
| Calcutta | sub. 0 19 |

TIDAL CONSTANTS.

| | |
|--------------------------|-----------|
| Rangoon Town | add. 1 29 |
| " River Entrance | add. 1 29 |
| Penang | add. 1 29 |
| Singapore | add. 1 29 |
| Hongkong | add. 1 29 |
| Shanghai | add. 1 29 |
| Yokohama | add. 1 29 |
| Valparaiso | add. 1 29 |
| Buenos Ayres | add. 1 29 |
| Monte Video | add. 1 29 |

INDIAN MONEY TABLE.

| Mohur | Rupai | Annas | Pice | Pis |
|----------------|---------------------|-----------|-----------|-----|
| 1 = 10 | 1 = 256 | 1 = 1,024 | 1 = 3,672 | |
| 1 = 16 | 1 = 16 | 1 = 64 | 1 = 192 | |
| 1 = 1 | 1 = 1 | 1 = 4 | 1 = 12 | |
| 100,000 Rupees | = 1 Lakh or 1 Crore | | | |
| 100 Lakhs | = 1 Crore | | | |
| 15 Rupees | = 1 Sovereign | | | |

THE SAME AS THEY READ AT HOME.

WHAT can be more agreeable than to possess the Magazine or Periodical which we know is just the same as they read at home? Such a one brings with it a personal association that other journals entirely lack.

CASSELL'S PUBLICATIONS, in addition to their intrinsic worth, carry with them the feeling that, whilst we can read the same stories and articles, and see the same pictures as our friends in the Old Country, we need never be separated in thought and interest, and that we have in such Magazines or Periodicals real friends which serve to bind the ties of friendship closer than ever.

Cassell's Magazine. Monthly, 6d.; or post free for 9s. 6d. per annum. ** A New Story by A. W. MARCHMONT begins in the Number published November 26, 1906.

"I am fond of reading short stories and I find the most readable ones in 'Cassell's Magazine.'"—Mr. Labouchere in **TRUTH**.

The Half-Yearly Volume is published at 5s., and the Yearly Volume at 8s.

The Quiver. For Sunday and General Reading. Monthly, 6d.; or post free for 8s. 6d. per annum. ** A new Story by KATHARINE TYNAN begins in the Part published November 26.

The **SATURDAY REVIEW** says:—"The Quiver" is the best of all the magazines devoted to Sunday reading."

The Yearly Volume is published at 7s. 6d.

Little Folks. Monthly, 6d.; or post free, 8s. per annum.

The **GRAPHIC** says:—"Little Folks" is the best magazine for Children."

The Half-Yearly Volumes are published in picture boards at 3s. 6d., and in cloth gilt at 5s.

Cassell's Saturday Journal. Weekly, price 1d.; Monthly, 6d.

"The best and cheapest pennyworth of popular literature."—**TIMES**.

Annual subscription of Monthly Part, 8s.

The Penny Magazine. Weekly, price 1d.; Monthly, 6d.

"For cheapness it is unequalled."—**STANDARD**.

Annual subscription of Monthly Part, 8s.

The Musical Home Journal. Containing Copyright Music for Every Member of the Family. Weekly, price 1d.; Monthly, 6d.

The Post Free Subscription for the Monthly Parts for 12 months is 8s. The Half-Yearly Volume is published at 3s. 6d.

Chums. Weekly, price 1d.; Monthly, 6d.

"The Champion of all boys' papers."—**PALL MALL GAZETTE**.

Annual subscription of Monthly Part, 8s.

Work. The Journal for Mechanics. Weekly, price 1d.; Monthly, 6d.

"There is not a person of ordinary average intelligence and strength who could not learn from 'WORK' . . . how in a short time to make a living."—**SATURDAY REVIEW**.

Annual subscription of Monthly Part, 8s.

Building World. Weekly, price 1d.; Monthly, 6d.

Annual subscription of Monthly Part, 8s.

A selection of the above Magazines and Journals should be found in every home. They provide a veritable library of excellent reading—refreshing, entertaining, and informing.

A Specimen Part of any one of them will be sent post free for 6d. to anyone enclosing this list to the Publishers.

CASSELL & COMPANY, LIMITED, La Belle Sauvage, London;
Paris, New York & Melbourne.

"WORK" HANDBOOKS.

A SERIES OF PRACTICAL MANUALS.

Edited by PAUL N. HASLUCK, Editor of "Work."

Illustrated. Cloth, 15. net; or Post Free, 15. 2d. each.

- Bamboo Work.** With 177 Engravings and Diagrams.
Basket Work. With 189 Illustrations.
Beehives and Bee-keepers' Appliances. With 155 Engravings and Diagrams.
Bent Iron Work. Including ELEMENTARY ART METAL WORK. With 269 Engravings and Designs.
Bookbinding. With 125 Engravings and Diagrams.
Boot Making and Mending. Including REPAIRING, LASTING, and FINISHING. With 179 Engravings and Diagrams.
Building Model Boats. With 168 Engravings and Diagrams.
Clay Modelling. With 153 Engravings and Diagrams.
Cycle Building and Repairing. With 190 Engravings and Diagrams.
Decorative Designs of All Ages for All Purposes. With 277 Engravings and Diagrams.
Dynamos and Electric Motors. With 142 Engravings and Diagrams.
Electric Bells, How to Make and Fit Them. With 162 Engravings and Diagrams.
Electro-Plating. With Numerous Illustrations and Diagrams.
Engraving Metals. With 117 Illustrations.
Glass Working by Heat and Abrasion. With 300 Engravings and Diagrams.
Glass Writing. With 129 Engravings and Diagrams.
Harness Making. With 197 Engravings and Diagrams.
House Decoration. With 79 Engravings and Diagrams.
How to Write Signs, Tickets, and Posters. With 170 Engravings and Diagrams.
Knitting and Splicing Ropes and Cordage. With 208 Engravings and Diagrams.
Leather Working. With 152 Engravings and Diagrams.
Microscopes. With 140 Engravings and Diagrams.
Mounting and Framing Pictures. With 240 Engravings, etc.
Optical Lanterns. With 160 Illustrations.
Photographic Cameras and Accessories. With 240 Illustrations.
Photography. With 70 Engravings and Diagrams.
Pianos. With 74 Engravings and Diagrams.
Saddlery. With 99 Engravings and Diagrams.
Sewing Machines. THEIR CONSTRUCTION, ADJUSTMENT, and REPAIR.
Smiths' Work. With 211 Engravings and Diagrams.
Tailoring. With 180 Engravings and Diagrams.
Taxidermy. With 108 Engravings and Diagrams.
Telescope Making. With 218 Engravings and Diagrams.
Terra-Cotta Work. With 245 Engravings and Diagrams.
Upholstery. With 162 Engravings and Diagrams.
Violins. With 177 Engravings and Diagrams.
Wood Finishing. With Engravings and Diagrams.

Other Volumes in Preparation.

Important Volumes of Cassell's Colonial Library.

Paper Covers, 2s. 6d. each; or bound in cloth, 3s. 6d. each.

- By J. FOSTER FRASER.
Pictures from the Balkans.*
Canada as It is.*
America at Work.*
The Real Siberia.
By BART KENNEDY.
A Tramp Camp.*
By MORICE GERARD.
The Red Seal.
By WILLIAM LE QUEUX.
The Spider's Eye.
The Woman at Kensington
By MAX PEMBERTON.
Red Morn
The Hundred Days.
The Giant's Gate.
By J. M. BARRIE.
Tommy and Grizel.
Sentimental Tommy.
The Little Minister.
By A. T. QUILLER-ROUCH.
The Adventures of Harry Revel.
The Ship of Stars.
Dead Man's Rock.
The Splendid Spur.
By RIDER HAGGARD.
The Brethren.
By R. L. STEVENSON.
Treasure Island.
Kidnapped.
Catriona.
By SILAS HOCKING.
A Human Face.
By MRS. HAROLD GORST.
The Light.
By E. W. HORNUNG.
Young Blood.
The Rogue's March.
Tiny Luttrell.

A complete list will be sent on application.

CASSELL & COMPANY, LIMITED, La Belle Sauvage, London;
Paris, New York & Melbourne.

GENERAL INFORMATION, &c.

SAMVAT CALENDAR, 1907.

| Day. | January | February | March | April | May | June | July | August | September | October | November | December |
|-------|---------|----------|--------|--------|--------|--------|--------|--------|-----------|---------|----------|----------|
| 1907. | 1903 | 1903 | 1903-4 | 1904 | 1904 | 1904 | 1904 | 1904 | 1904 | 1904 | 1904 | 1904 |
| 1 | 2 badi | 3 badi | 4 badi | 5 badi | 6 badi | 7 badi | 8 badi | 9 badi | 10 badi | 11 badi | 12 badi | 13 badi |
| 2 | 3 | 4 | 5 | 6 | 7 | 8 | 9 | 10 | 11 | 12 | 13 | 14 |
| 3 | 4 | 5 | 6 | 7 | 8 | 9 | 10 | 11 | 12 | 13 | 14 | 15 |
| 4 | 5 | 6 | 7 | 8 | 9 | 10 | 11 | 12 | 13 | 14 | 15 | 16 |
| 5 | 6 | 7 | 8 | 9 | 10 | 11 | 12 | 13 | 14 | 15 | 16 | 17 |
| 6 | 7 | 8 | 9 | 10 | 11 | 12 | 13 | 14 | 15 | 16 | 17 | 18 |
| 7 | 8 | 9 | 10 | 11 | 12 | 13 | 14 | 15 | 16 | 17 | 18 | 19 |
| 8 | 9 | 10 | 11 | 12 | 13 | 14 | 15 | 16 | 17 | 18 | 19 | 20 |
| 9 | 10 | 11 | 12 | 13 | 14 | 15 | 16 | 17 | 18 | 19 | 20 | 21 |
| 10 | 11 | 12 | 13 | 14 | 15 | 16 | 17 | 18 | 19 | 20 | 21 | 22 |
| 11 | 12 | 13 | 14 | 15 | 16 | 17 | 18 | 19 | 20 | 21 | 22 | 23 |
| 12 | 13 | 14 | 15 | 16 | 17 | 18 | 19 | 20 | 21 | 22 | 23 | 24 |
| 13 | 14 | 15 | 16 | 17 | 18 | 19 | 20 | 21 | 22 | 23 | 24 | 25 |
| 14 | 15 | 16 | 17 | 18 | 19 | 20 | 21 | 22 | 23 | 24 | 25 | 26 |
| 15 | 16 | 17 | 18 | 19 | 20 | 21 | 22 | 23 | 24 | 25 | 26 | 27 |
| 16 | 17 | 18 | 19 | 20 | 21 | 22 | 23 | 24 | 25 | 26 | 27 | 28 |
| 17 | 18 | 19 | 20 | 21 | 22 | 23 | 24 | 25 | 26 | 27 | 28 | 29 |
| 18 | 19 | 20 | 21 | 22 | 23 | 24 | 25 | 26 | 27 | 28 | 29 | 30 |
| 19 | 20 | 21 | 22 | 23 | 24 | 25 | 26 | 27 | 28 | 29 | 30 | 31 |
| 20 | 21 | 22 | 23 | 24 | 25 | 26 | 27 | 28 | 29 | 30 | 31 | 1 |
| 21 | 22 | 23 | 24 | 25 | 26 | 27 | 28 | 29 | 30 | 31 | 1 | 2 |
| 22 | 23 | 24 | 25 | 26 | 27 | 28 | 29 | 30 | 31 | 1 | 2 | 3 |
| 23 | 24 | 25 | 26 | 27 | 28 | 29 | 30 | 31 | 1 | 2 | 3 | 4 |
| 24 | 25 | 26 | 27 | 28 | 29 | 30 | 31 | 1 | 2 | 3 | 4 | 5 |
| 25 | 26 | 27 | 28 | 29 | 30 | 31 | 1 | 2 | 3 | 4 | 5 | 6 |
| 26 | 27 | 28 | 29 | 30 | 31 | 1 | 2 | 3 | 4 | 5 | 6 | 7 |
| 27 | 28 | 29 | 30 | 31 | 1 | 2 | 3 | 4 | 5 | 6 | 7 | 8 |
| 28 | 29 | 30 | 31 | 1 | 2 | 3 | 4 | 5 | 6 | 7 | 8 | 9 |
| 29 | 30 | 31 | 1 | 2 | 3 | 4 | 5 | 6 | 7 | 8 | 9 | 10 |
| 30 | 31 | 1 | 2 | 3 | 4 | 5 | 6 | 7 | 8 | 9 | 10 | 11 |
| 31 | 1 | 2 | 3 | 4 | 5 | 6 | 7 | 8 | 9 | 10 | 11 | 12 |

This Calendar is for Lanka. The month name is inserted to 1 *sudi*, only, so that where necessary it may be written in for 1 *badi*. The Calendar figures are correct for Calcutta, Madras, and Bombay, except when followed by the initial letter of the place; a capital letter signifies that the title in the table is to be increased by 1, and a small letter that it is to be diminished by 1, to obtain the title at the place indicated by the letter.

TABLE OF EXCHANGE, No. 1—RUPEES INTO POUNDS STERLING.

| Rupees. | 1s. 3d. | 1s. 3d. | 1s. 3d. | 1s. 3d. | 1s. 3d. | 1s. 3d. | 1s. 3d. |
|---------|-----------|-----------|-----------|-----------|-----------|-----------|-----------|
| 1 | 1s. 3d. | 1s. 3d. | 1s. 3d. | 1s. 3d. | 1s. 3d. | 1s. 3d. | 1s. 3d. |
| 2 | 2s. 6d. | 2s. 6d. | 2s. 6d. | 2s. 6d. | 2s. 6d. | 2s. 6d. | 2s. 6d. |
| 3 | 3s. 9d. | 3s. 9d. | 3s. 9d. | 3s. 9d. | 3s. 9d. | 3s. 9d. | 3s. 9d. |
| 4 | 4s. 12d. | 4s. 12d. | 4s. 12d. | 4s. 12d. | 4s. 12d. | 4s. 12d. | 4s. 12d. |
| 5 | 5s. 3d. | 5s. 3d. | 5s. 3d. | 5s. 3d. | 5s. 3d. | 5s. 3d. | 5s. 3d. |
| 6 | 6s. 6d. | 6s. 6d. | 6s. 6d. | 6s. 6d. | 6s. 6d. | 6s. 6d. | 6s. 6d. |
| 7 | 7s. 9d. | 7s. 9d. | 7s. 9d. | 7s. 9d. | 7s. 9d. | 7s. 9d. | 7s. 9d. |
| 8 | 8s. 12d. | 8s. 12d. | 8s. 12d. | 8s. 12d. | 8s. 12d. | 8s. 12d. | 8s. 12d. |
| 9 | 9s. 3d. | 9s. 3d. | 9s. 3d. | 9s. 3d. | 9s. 3d. | 9s. 3d. | 9s. 3d. |
| 10 | 10s. 6d. | 10s. 6d. | 10s. 6d. | 10s. 6d. | 10s. 6d. | 10s. 6d. | 10s. 6d. |
| 11 | 11s. 9d. | 11s. 9d. | 11s. 9d. | 11s. 9d. | 11s. 9d. | 11s. 9d. | 11s. 9d. |
| 12 | 12s. 12d. | 12s. 12d. | 12s. 12d. | 12s. 12d. | 12s. 12d. | 12s. 12d. | 12s. 12d. |
| 13 | 13s. 3d. | 13s. 3d. | 13s. 3d. | 13s. 3d. | 13s. 3d. | 13s. 3d. | 13s. 3d. |
| 14 | 14s. 6d. | 14s. 6d. | 14s. 6d. | 14s. 6d. | 14s. 6d. | 14s. 6d. | 14s. 6d. |
| 15 | 15s. 9d. | 15s. 9d. | 15s. 9d. | 15s. 9d. | 15s. 9d. | 15s. 9d. | 15s. 9d. |
| 16 | 16s. 12d. | 16s. 12d. | 16s. 12d. | 16s. 12d. | 16s. 12d. | 16s. 12d. | 16s. 12d. |
| 17 | 17s. 3d. | 17s. 3d. | 17s. 3d. | 17s. 3d. | 17s. 3d. | 17s. 3d. | 17s. 3d. |
| 18 | 18s. 6d. | 18s. 6d. | 18s. 6d. | 18s. 6d. | 18s. 6d. | 18s. 6d. | 18s. 6d. |
| 19 | 19s. 9d. | 19s. 9d. | 19s. 9d. | 19s. 9d. | 19s. 9d. | 19s. 9d. | 19s. 9d. |
| 20 | 20s. 12d. | 20s. 12d. | 20s. 12d. | 20s. 12d. | 20s. 12d. | 20s. 12d. | 20s. 12d. |
| 21 | 21s. 3d. | 21s. 3d. | 21s. 3d. | 21s. 3d. | 21s. 3d. | 21s. 3d. | 21s. 3d. |
| 22 | 22s. 6d. | 22s. 6d. | 22s. 6d. | 22s. 6d. | 22s. 6d. | 22s. 6d. | 22s. 6d. |
| 23 | 23s. 9d. | 23s. 9d. | 23s. 9d. | 23s. 9d. | 23s. 9d. | 23s. 9d. | 23s. 9d. |
| 24 | 24s. 12d. | 24s. 12d. | 24s. 12d. | 24s. 12d. | 24s. 12d. | 24s. 12d. | 24s. 12d. |
| 25 | 25s. 3d. | 25s. 3d. | 25s. 3d. | 25s. 3d. | 25s. 3d. | 25s. 3d. | 25s. 3d. |
| 26 | 26s. 6d. | 26s. 6d. | 26s. 6d. | 26s. 6d. | 26s. 6d. | 26s. 6d. | 26s. 6d. |
| 27 | 27s. 9d. | 27s. 9d. | 27s. 9d. | 27s. 9d. | 27s. 9d. | 27s. 9d. | 27s. 9d. |
| 28 | 28s. 12d. | 28s. 12d. | 28s. 12d. | 28s. 12d. | 28s. 12d. | 28s. 12d. | 28s. 12d. |
| 29 | 29s. 3d. | 29s. 3d. | 29s. 3d. | 29s. 3d. | 29s. 3d. | 29s. 3d. | 29s. 3d. |
| 30 | 30s. 6d. | 30s. 6d. | 30s. 6d. | 30s. 6d. | 30s. 6d. | 30s. 6d. | 30s. 6d. |
| 31 | 31s. 9d. | 31s. 9d. | 31s. 9d. | 31s. 9d. | 31s. 9d. | 31s. 9d. | 31s. 9d. |

TABLE OF EXCHANGE, No. 2—POUNDS STERLING INTO RUPEES.

| Sterling. | 1s. 3d. | 1s. 3d. | 1s. 3d. | 1s. 3d. | 1s. 3d. | 1s. 3d. | 1s. 3d. |
|-----------|-----------|-----------|-----------|-----------|-----------|-----------|-----------|
| 1s. 3d. | 1s. 3d. | 1s. 3d. | 1s. 3d. | 1s. 3d. | 1s. 3d. | 1s. 3d. | 1s. 3d. |
| 2s. 6d. | 2s. 6d. | 2s. 6d. | 2s. 6d. | 2s. 6d. | 2s. 6d. | 2s. 6d. | 2s. 6d. |
| 3s. 9d. | 3s. 9d. | 3s. 9d. | 3s. 9d. | 3s. 9d. | 3s. 9d. | 3s. 9d. | 3s. 9d. |
| 4s. 12d. | 4s. 12d. | 4s. 12d. | 4s. 12d. | 4s. 12d. | 4s. 12d. | 4s. 12d. | 4s. 12d. |
| 5s. 3d. | 5s. 3d. | 5s. 3d. | 5s. 3d. | 5s. 3d. | 5s. 3d. | 5s. 3d. | 5s. 3d. |
| 6s. 6d. | 6s. 6d. | 6s. 6d. | 6s. 6d. | 6s. 6d. | 6s. 6d. | 6s. 6d. | 6s. 6d. |
| 7s. 9d. | 7s. 9d. | 7s. 9d. | 7s. 9d. | 7s. 9d. | 7s. 9d. | 7s. 9d. | 7s. 9d. |
| 8s. 12d. | 8s. 12d. | 8s. 12d. | 8s. 12d. | 8s. 12d. | 8s. 12d. | 8s. 12d. | 8s. 12d. |
| 9s. 3d. | 9s. 3d. | 9s. 3d. | 9s. 3d. | 9s. 3d. | 9s. 3d. | 9s. 3d. | 9s. 3d. |
| 10s. 6d. | 10s. 6d. | 10s. 6d. | 10s. 6d. | 10s. 6d. | 10s. 6d. | 10s. 6d. | 10s. 6d. |
| 11s. 9d. | 11s. 9d. | 11s. 9d. | 11s. 9d. | 11s. 9d. | 11s. 9d. | 11s. 9d. | 11s. 9d. |
| 12s. 12d. | 12s. 12d. | 12s. 12d. | 12s. 12d. | 12s. 12d. | 12s. 12d. | 12s. 12d. | 12s. 12d. |
| 13s. 3d. | 13s. 3d. | 13s. 3d. | 13s. 3d. | 13s. 3d. | 13s. 3d. | 13s. 3d. | 13s. 3d. |
| 14s. 6d. | 14s. 6d. | 14s. 6d. | 14s. 6d. | 14s. 6d. | 14s. 6d. | 14s. 6d. | 14s. 6d. |
| 15s. 9d. | 15s. 9d. | 15s. 9d. | 15s. 9d. | 15s. 9d. | 15s. 9d. | 15s. 9d. | 15s. 9d. |
| 16s. 12d. | 16s. 12d. | 16s. 12d. | 16s. 12d. | 16s. 12d. | 16s. 12d. | 16s. 12d. | 16s. 12d. |
| 17s. 3d. | 17s. 3d. | 17s. 3d. | 17s. 3d. | 17s. 3d. | 17s. 3d. | 17s. 3d. | 17s. 3d. |
| 18s. 6d. | 18s. 6d. | 18s. 6d. | 18s. 6d. | 18s. 6d. | 18s. 6d. | 18s. 6d. | 18s. 6d. |
| 19s. 9d. | 19s. 9d. | 19s. 9d. | 19s. 9d. | 19s. 9d. | 19s. 9d. | 19s. 9d. | 19s. 9d. |
| 20s. 12d. | 20s. 12d. | 20s. 12d. | 20s. 12d. | 20s. 12d. | 20s. 12d. | 20s. 12d. | 20s. 12d. |
| 21s. 3d. | 21s. 3d. | 21s. 3d. | 21s. 3d. | 21s. 3d. | 21s. 3d. | 21s. 3d. | 21s. 3d. |
| 22s. 6d. | 22s. 6d. | 22s. 6d. | 22s. 6d. | 22s. 6d. | 22s. 6d. | 22s. 6d. | 22s. 6d. |
| 23s. 9d. | 23s. 9d. | 23s. 9d. | 23s. 9d. | 23s. 9d. | 23s. 9d. | 23s. 9d. | 23s. 9d. |
| 24s. 12d. | 24s. 12d. | 24s. 12d. | 24s. 12d. | 24s. 12d. | 24s. 12d. | 24s. 12d. | 24s. 12d. |
| 25s. 3d. | 25s. 3d. | 25s. 3d. | 25s. 3d. | 25s. 3d. | 25s. 3d. | 25s. 3d. | 25s. 3d. |
| 26s. 6d. | 26s. 6d. | 26s. 6d. | 26s. 6d. | 26s. 6d. | 26s. 6d. | 26s. 6d. | 26s. 6d. |
| 27s. 9d. | 27s. 9d. | 27s. 9d. | 27s. 9d. | 27s. 9d. | 27s. 9d. | 27s. 9d. | 27s. 9d. |
| 28s. 12d. | 28s. 12d. | 28s. 12d. | 28s. 12d. | 28s. 12d. | 28s. 12d. | 28s. 12d. | 28s. 12d. |
| 29s. 3d. | 29s. 3d. | 29s. 3d. | 29s. 3d. | 29s. 3d. | 29s. 3d. | 29s. 3d. | 29s. 3d. |
| 30s. 6d. | 30s. 6d. | 30s. 6d. | 30s. 6d. | 30s. 6d. | 30s. 6d. | 30s. 6d. | 30s. 6d. |
| 31s. 9d. | 31s. 9d. | 31s. 9d. | 31s. 9d. | 31s. 9d. | 31s. 9d. | 31s. 9d. | 31s. 9d. |

| Rupees. | 1s. 3d. | 1s. 3d. | 1s. 3d. | 1s. 3d. | 1s. 3d. | 1s. 3d. | 1s. 3d. |
|---------|------------|------------|------------|------------|------------|------------|------------|
| 1 | 1s. 3d. | 1s. 3d. | 1s. 3d. | 1s. 3d. | 1s. 3d. | 1s. 3d. | 1s. 3d. |
| 2 | 2s. 6d. | 2s. 6d. | 2s. 6d. | 2s. 6d. | 2s. 6d. | 2s. 6d. | 2s. 6d. |
| 3 | 3s. 9d. | 3s. 11d. | 3s. 11d. | 3s. 11d. | 3s. 11d. | 3s. 11d. | 3s. 11d. |
| 4 | 4s. 12d. | 4s. 6d. | 4s. 6d. | 4s. 6d. | 4s. 6d. | 4s. 6d. | 4s. 6d. |
| 5 | 5s. 3d. | 5s. 6d. | 5s. 6d. | 5s. 6d. | 5s. 6d. | 5s. 6d. | 5s. 6d. |
| 6 | 6s. 6d. | 6s. 9d. | 6s. 9d. | 6s. 9d. | 6s. 9d. | 6s. 9d. | 6s. 9d. |
| 7 | 7s. 9d. | 7s. 6d. | 7s. 6d. | 7s. 6d. | 7s. 6d. | 7s. 6d. | 7s. 6d. |
| 8 | 8s. 12d. | 8s. 6d. | 8s. 6d. | 8s. 6d. | 8s. 6d. | 8s. 6d. | 8s. 6d. |
| 9 | 9s. 3d. | 9s. 6d. | 9s. 6d. | 9s. 6d. | 9s. 6d. | 9s. 6d. | 9s. 6d. |
| 10 | 10s. 6d. | 10s. 9d. | 10s. 9d. | 10s. 9d. | 10s. 9d. | 10s. 9d. | 10s. 9d. |
| 11 | 11s. 9d. | 11s. 12d. | 11s. 12d. | 11s. 12d. | 11s. 12d. | 11s. 12d. | 11s. 12d. |
| 12 | 12s. 12d. | 12s. 6d. | 12s. 6d. | 12s. 6d. | 12s. 6d. | 12s. 6d. | 12s. 6d. |
| 13 | 13s. 3d. | 13s. 6d. | 13s. 6d. | 13s. 6d. | 13s. 6d. | 13s. 6d. | 13s. 6d. |
| 14 | 14s. 6d. | 14s. 9d. | 14s. 9d. | 14s. 9d. | 14s. 9d. | 14s. 9d. | 14s. 9d. |
| 15 | 15s. 9d. | 15s. 12d. | 15s. 12d. | 15s. 12d. | 15s. 12d. | 15s. 12d. | 15s. 12d. |
| 16 | 16s. 12d. | 16s. 6d. | 16s. 6d. | 16s. 6d. | 16s. 6d. | 16s. 6d. | 16s. 6d. |
| 17 | 17s. 3d. | 17s. 6d. | 17s. 6d. | 17s. 6d. | 17s. 6d. | 17s. 6d. | 17s. 6d. |
| 18 | 18s. 6d. | 18s. 9d. | 18s. 9d. | 18s. 9d. | 18s. 9d. | 18s. 9d. | 18s. 9d. |
| 19 | 19s. 9d. | 19s. 12d. | 19s. 12d. | 19s. 12d. | 19s. 12d. | 19s. 12d. | 19s. 12d. |
| 20 | 20s. 12d. | 20s. 6d. | 20s. 6d. | 20s. 6d. | 20s. 6d. | 20s. 6d. | 20s. 6d. |
| 21 | 21s. 3d. | 21s. 6d. | 21s. 6d. | 21s. 6d. | 21s. 6d. | 21s. 6d. | 21s. 6d. |
| 22 | 22s. 6d. | 22s. 9d. | 22s. 9d. | 22s. 9d. | 22s. 9d. | 22s. 9d. | 22s. 9d. |
| 23 | 23s. 9d. | 23s. 12d. | 23s. 12d. | 23s. 12d. | 23s. 12d. | 23s. 12d. | 23s. 12d. |
| 24 | 24s. 12d. | 24s. 6d. | 24s. 6d. | 24s. 6d. | 24s. 6d. | 24s. 6d. | 24s. 6d. |
| 25 | 25s. 3d. | 25s. 6d. | 25s. 6d. | 25s. 6d. | 25s. 6d. | 25s. 6d. | 25s. 6d. |
| 26 | 26s. 6d. | 26s. 9d. | 26s. 9d. | 26s. 9d. | 26s. 9d. | 26s. 9d. | 26s. 9d. |
| 27 | 27s. 9d. | 27s. 12d. | 27s. 12d. | 27s. 12d. | 27s. 12d. | 27s. 12d. | 27s. 12d. |
| 28 | 28s. 12d. | 28s. 6d. | 28s. 6d. | 28s. 6d. | 28s. 6d. | 28s. 6d. | 28s. 6d. |
| 29 | 29s. 3d. | 29s. 6d. | 29s. 6d. | 29s. 6d. | 29s. 6d. | 29s. 6d. | 29s. 6d. |
| 30 | 30s. 6d. | 30s. 9d. | 30s. 9d. | 30s. 9d. | 30s. 9d. | 30s. 9d. | 30s. 9d. |
| 31 | 31s. 9d. | 31s. 12d. | 31s. 12d. | 31s. 12d. | 31s. 12d. | 31s. 12d. | 31s. 12d. |
| 32 | 32s. 12d. | 32s. 6d. | 32s. 6d. | 32s. 6d. | 32s. 6d. | 32s. 6d. | 32s. 6d. |
| 33 | 33s. 3d. | 33s. 6d. | 33s. 6d. | 33s. 6d. | 33s. 6d. | 33s. 6d. | 33s. 6d. |
| 34 | 34s. 6d. | 34s. 9d. | 34s. 9d. | 34s. 9d. | 34s. 9d. | 34s. 9d. | 34s. 9d. |
| 35 | 35s. 9d. | 35s. 12d. | 35s. 12d. | 35s. 12d. | 35s. 12d. | 35s. 12d. | 35s. 12d. |
| 36 | 36s. 12d. | 36s. 6d. | 36s. 6d. | 36s. 6d. | 36s. 6d. | 36s. 6d. | 36s. 6d. |
| 37 | 37s. 3d. | 37s. 6d. | 37s. 6d. | 37s. 6d. | 37s. 6d. | 37s. 6d. | 37s. 6d. |
| 38 | 38s. 6d. | 38s. 9d. | 38s. 9d. | 38s. 9d. | 38s. 9d. | 38s. 9d. | 38s. 9d. |
| 39 | 39s. 9d. | 39s. 12d. | 39s. 12d. | 39s. 12d. | 39s. 12d. | 39s. 12d. | 39s. 12d. |
| 40 | 40s. 12d. | 40s. 6d. | 40s. 6d. | 40s. 6d. | 40s. 6d. | 40s. 6d. | 40s. 6d. |
| 41 | 41s. 3d. | 41s. 6d. | 41s. 6d. | 41s. 6d. | 41s. 6d. | 41s. 6d. | 41s. 6d. |
| 42 | 42s. 6d. | 42s. 9d. | 42s. 9d. | 42s. 9d. | 42s. 9d. | 42s. 9d. | 42s. 9d. |
| 43 | 43s. 9d. | 43s. 12d. | 43s. 12d. | 43s. 12d. | 43s. 12d. | 43s. 12d. | 43s. 12d. |
| 44 | 44s. 12d. | 44s. 6d. | 44s. 6d. | 44s. 6d. | 44s. 6d. | 44s. 6d. | 44s. 6d. |
| 45 | 45s. 3d. | 45s. 6d. | 45s. 6d. | 45s. 6d. | 45s. 6d. | 45s. 6d. | 45s. 6d. |
| 46 | 46s. 6d. | 46s. 9d. | 46s. 9d. | 46s. 9d. | 46s. 9d. | 46s. 9d. | 46s. 9d. |
| 47 | 47s. 9d. | 47s. 12d. | 47s. 12d. | 47s. 12d. | 47s. 12d. | 47s. 12d. | 47s. 12d. |
| 48 | 48s. 12d. | 48s. 6d. | 48s. 6d. | 48s. 6d. | 48s. 6d. | 48s. 6d. | 48s. 6d. |
| 49 | 49s. 3d. | 49s. 6d. | 49s. 6d. | 49s. 6d. | 49s. 6d. | 49s. 6d. | 49s. 6d. |
| 50 | 50s. 6d. | 50s. 9d. | 50s. 9d. | 50s. 9d. | 50s. 9d. | 50s. 9d. | 50s. 9d. |
| 51 | 51s. 9d. | 51s. 12d. | 51s. 12d. | 51s. 12d. | 51s. 12d. | 51s. 12d. | 51s. 12d. |
| 52 | 52s. 12d. | 52s. 6d. | 52s. 6d. | 52s. 6d. | 52s. 6d. | 52s. 6d. | 52s. 6d. |
| 53 | 53s. 3d. | 53s. 6d. | 53s. 6d. | 53s. 6d. | 53s. 6d. | 53s. 6d. | 53s. 6d. |
| 54 | 54s. 6d. | 54s. 9d. | 54s. 9d. | 54s. 9d. | 54s. 9d. | 54s. 9d. | 54s. 9d. |
| 55 | 55s. 9d. | 55s. 12d. | 55s. 12d. | 55s. 12d. | 55s. 12d. | 55s. 12d. | 55s. 12d. |
| 56 | 56s. 12d. | 56s. 6d. | 56s. 6d. | 56s. 6d. | 56s. 6d. | 56s. 6d. | 56s. 6d. |
| 57 | 57s. 3d. | 57s. 6d. | 57s. 6d. | 57s. 6d. | 57s. 6d. | 57s. 6d. | 57s. 6d. |
| 58 | 58s. 6d. | 58s. 9d. | 58s. 9d. | 58s. 9d. | 58s. 9d. | 58s. 9d. | 58s. 9d. |
| 59 | 59s. 9d. | 59s. 12d. | 59s. 12d. | 59s. 12d. | 59s. 12d. | 59s. 12d. | 59s. 12d. |
| 60 | 60s. 12d. | 60s. 6d. | 60s. 6d. | 60s. 6d. | 60s. 6d. | 60s. 6d. | 60s. 6d. |
| 61 | 61s. 3d. | 61s. 6d. | 61s. 6d. | 61s. 6d. | 61s. 6d. | 61s. 6d. | 61s. 6d. |
| 62 | 62s. 6d. | 62s. 9d. | 62s. 9d. | 62s. 9d. | 62s. 9d. | 62s. 9d. | 62s. 9d. |
| 63 | 63s. 9d. | 63s. 12d. | 63s. 12d. | 63s. 12d. | 63s. 12d. | 63s. 12d. | 63s. 12d. |
| 64 | 64s. 12d. | 64s. 6d. | 64s. 6d. | 64s. 6d. | 64s. 6d. | 64s. 6d. | 64s. 6d. |
| 65 | 65s. 3d. | 65s. 6d. | 65s. 6d. | 65s. 6d. | 65s. 6d. | 65s. 6d. | 65s. 6d. |
| 66 | 66s. 6d. | 66s. 9d. | 66s. 9d. | 66s. 9d. | 66s. 9d. | 66s. 9d. | 66s. 9d. |
| 67 | 67s. 9d. | 67s. 12d. | 67s. 12d. | 67s. 12d. | 67s. 12d. | 67s. 12d. | 67s. 12d. |
| 68 | 68s. 12d. | 68s. 6d. | 68s. 6d. | 68s. 6d. | 68s. 6d. | 68s. 6d. | 68s. 6d. |
| 69 | 69s. 3d. | 69s. 6d. | 69s. 6d. | 69s. 6d. | 69s. 6d. | 69s. 6d. | 69s. 6d. |
| 70 | 70s. 6d. | 70s. 9d. | 70s. 9d. | 70s. 9d. | 70s. 9d. | 70s. 9d. | 70s. 9d. |
| 71 | 71s. 9d. | 71s. 12d. | 71s. 12d. | 71s. 12d. | 71s. 12d. | 71s. 12d. | 71s. 12d. |
| 72 | 72s. 12d. | 72s. 6d. | 72s. 6d. | 72s. 6d. | 72s. 6d. | 72s. 6d. | 72s. 6d. |
| 73 | 73s. 3d. | 73s. 6d. | 73s. 6d. | 73s. 6d. | 73s. 6d. | 73s. 6d. | 73s. 6d. |
| 74 | 74s. 6d. | 74s. 9d. | 74s. 9d. | 74s. 9d. | 74s. 9d. | 74s. 9d. | 74s. 9d. |
| 75 | 75s. 9d. | 75s. 12d. | 75s. 12d. | 75s. 12d. | 75s. 12d. | 75s. 12d. | 75s. 12d. |
| 76 | 76s. 12d. | 76s. 6d. | 76s. 6d. | 76s. 6d. | 76s. 6d. | 76s. 6d. | 76s. 6d. |
| 77 | 77s. 3d. | 77s. 6d. | 77s. 6d. | 77s. 6d. | 77s. 6d. | 77s. 6d. | 77s. 6d. |
| 78 | 78s. 6d. | 78s. 9d. | 78s. 9d. | 78s. 9d. | 78s. 9d. | 78s. 9d. | 78s. 9d. |
| 79 | 79s. 9d. | 79s. 12d. | 79s. 12d. | 79s. 12d. | 79s. 12d. | 79s. 12d. | 79s. 12d. |
| 80 | 80s. 12d. | 80s. 6d. | 80s. 6d. | 80s. 6d. | 80s. 6d. | 80s. 6d. | 80s. 6d. |
| 81 | 81s. 3d. | 81s. 6d. | 81s. 6d. | 81s. 6d. | 81s. 6d. | 81s. 6d. | 81s. 6d. |
| 82 | 82s. 6d. | 82s. 9d. | 82s. 9d. | 82s. 9d. | 82s. 9d. | 82s. 9d. | 82s. 9d. |
| 83 | 83s. 9d. | 83s. 12d. | 83s. 12d. | 83s. 12d. | 83s. 12d. | 83s. 12d. | 83s. 12d. |
| 84 | 84s. 12d. | 84s. 6d. | 84s. 6d. | 84s. 6d. | 84s. 6d. | 84s. 6d. | 84s. 6d. |
| 85 | 85s. 3d. | 85s. 6d. | 85s. 6d. | 85s. 6d. | 85s. 6d. | 85s. 6d. | 85s. 6d. |
| 86 | 86s. 6d. | 86s. 9d. | 86s. 9d. | 86s. 9d. | 86s. 9d. | 86s. 9d. | 86s. 9d. |
| 87 | 87s. 9d. | 87s. 12d. | 87s. 12d. | 87s. 12d. | 87s. 12d. | 87s. 12d. | 87s. 12d. |
| 88 | 88s. 12d. | 88s. 6d. | 88s. 6d. | 88s. 6d. | 88s. 6d. | 88s. 6d. | 88s. 6d. |
| 89 | 89s. 3d. | 89s. 6d. | 89s. 6d. | 89s. 6d. | 89s. 6d. | 89s. 6d. | 89s. 6d. |
| 90 | 90s. 6d. | 90s. 9d. | 90s. 9d. | 90s. 9d. | 90s. 9d. | 90s. 9d. | 90s. 9d. |
| 91 | 91s. 9d. | 91s. 12d. | 91s. 12d. | 91s. 12d. | 91s. 12d. | 91s. 12d. | 91s. 12d. |
| 92 | 92s. 12d. | 92s. 6d. | 92s. 6d. | 92s. 6d. | 92s. 6d. | 92s. 6d. | 92s. 6d. |
| 93 | 93s. 3d. | 93s. 6d. | 93s. 6d. | 93s. 6d. | 93s. 6d. | 93s. 6d. | 93s. 6d. |
| 94 | 94s. 6d. | 94s. 9d. | 94s. 9d. | 94s. 9d. | 94s. 9d. | 94s. 9d. | 94s. 9d. |
| 95 | 95s. 9d. | 95s. 12d. | 95s. 12d. | 95s. 12d. | 95s. 12d. | 95s. 12d. | 95s. 12d. |
| 96 | 96s. 12d. | 96s. 6d. | 96s. 6d. | 96s. 6d. | 96s. 6d. | 96s. 6d. | 96s. 6d. |
| 97 | 97s. 3d. | 97s. 6d. | 97s. 6d. | 97s. 6d. | 97s. 6d. | 97s. 6d. | 97s. 6d. |
| 98 | 98s. 6d. | 98s. 9d. | 98s. 9d. | 98s. 9d. | 98s. 9d. | 98s. 9d. | 98s. 9d. |
| 99 | 99s. 9d. | 99s. 12d. | 99s. 12d. | 99s. 12d. | 99s. 12d. | 99s. 12d. | 99s. 12d. |
| 100 | 100s. 12d. | 100s. 6d. | 100s. 6d. | 100s. 6d. | 100s. 6d. | 100s. 6d. | 100s. 6d. |
| 101 | 101s. 3d. | 101s. 6d. | 101s. 6d. | 101s. 6d. | 101s. 6d. | 101s. 6d. | 101s. 6d. |
| 102 | 102s. 6d. | 102s. 9d. | 102s. 9d. | 102s. 9d. | 102s. 9d. | 102s. 9d. | 102s. 9d. |
| 103 | 103s. 9d. | 103s. 12d. | 103s. 12d. | 103s. 12d. | 103s. 12d. | 103s. 12d. | 103s. 12d. |
| 104 | 104s. 12d. | 104s. 6d. | 104s. 6d. | 104s. 6d. | 104s. 6d. | 104s. 6d. | 104s. 6d. |
| 105 | 105s. 3d. | 105s. 6d. | 105s. 6d. | 105s. 6d. | 105s. 6d. | 105s. 6d. | 105s. 6d. |
| 106 | 106s. 6d. | 106s. 9d. | 106s. 9d. | 106s. 9d. | 106s. 9d. | 106s. 9d. | 106s. 9d. |
| 107 | 107s. 9d. | 107s. 12d. | 107s. 12d. | 107s. 12d. | 107s. 12d. | 107s. 12d. | 107s. 12d. |
| 108 | 108s. 12d. | 108s. 6d. | 108s. 6d. | 108s. 6d. | 108s. 6d. | 108s. 6d. | 108s. 6d. |
| 109 | 109s. 3d. | 109s. 6d. | 109s. 6d. | 109s. 6d. | 109s. 6d. | 109s. 6d. | 109s. 6d. |
| 110 | 110s. 6d. | 110s. 9d. | 110s. 9d. | 110s. 9d. | 110s. 9d. | 110s. 9d. | 110s. 9d. |
| 111 | 111s. 9d. | 111s. 12d. | 111s. 12d. | 111s. 12d. | 111s. 12d. | 111s. 12d. | 111s. 12d. |
| 112 | 112s. 12d. | 112s. 6d. | 112s. 6d. | 112s. 6d. | 112s. 6d. | 112s. 6d. | 112s. 6d. |
| 113 | 113s. 3d. | 113s. 6d. | 113s. 6d. | 113s. 6d. | 113s. 6d. | 113s. 6d. | 113s. 6d. |
| 114 | 114s. 6d. | 114s. 9d. | 114s. 9d. | 114s. 9d. | 114s. 9d. | 114s. 9d. | 114s. 9d. |
| 115 | 115s. 9d. | 115s. 12d. | 115s. 12d. | 115s. 12d. | 115s. 12d. | 115s. 12d. | 115s. 12d. |
| 116 | 116s. 12d. | 116s. 6d. | 116s. 6d. | 116s. 6d. | 116s. 6d. | 116s. 6d. | 116s. 6d. |
| 117 | 117s. 3d. | 117s. 6d. | 117s. 6d. | 117s. 6d. | 117s. 6d. | 117s. 6d. | 117s. 6d. |
| 118 | 118s. 6d. | 118s. 9d. | 118s. 9d. | 118s. 9d. | 118s. 9d. | 118s. 9d. | 118s. 9d. |
| 119 | 119s. 9d. | 119s. 12d. | 119s. 12d. | 119s. 12d. | 119s. 12d. | 119s. 12d. | 119s. 12d. |
| 120 | 120s. 12d. | 120s. 6d. | 120s. 6d. | 120s. 6d. | 120s. 6d. | 120s. 6d. | 120s. 6d. |
| 121 | 121s. 3d. | 121s. 6d. | 121s. 6d. | 121s. 6d. | 121s. 6d. | 121s. 6d. | 121s. 6d. |
| 122 | 122s. 6d. | 122s. 9d. | 122s. 9d. | 122s. 9d. | 122s. 9d. | 122s. 9d. | 122s. 9d. |
| 123 | 123s. 9d. | 123s. 12d. | 123s. 12d. | 123s. 12d. | 123s. 12d. | 123s. 12d. | 123s. 12d. |
| 124 | 124s. 12d. | 124s. 6d. | 124s. 6d. | 124s. 6d. | 124s. 6d. | 124s. 6d. | 124s. 6d. |
| 125 | 125s. 3d. | 125s. 6d. | 125s. 6d. | | | | |

GENERAL INFORMATION, &c.

INDIAN INLAND POSTAGE RATES.

Post Cards.—Single, $\frac{1}{2}$ anna; reply, $\frac{1}{2}$ anna. **Letters.**—Not exc. $\frac{1}{2}$ tola, $\frac{1}{2}$ anna; exc. $\frac{1}{2}$ tola but not exc. $\frac{1}{2}$ tola, 1 anna; for every add. $\frac{1}{2}$ tola or fraction, 1 anna. **Packets, Publications of all kinds, Newspapers, Books and Patterns.**—Not exc. 10 tolas, $\frac{1}{2}$ anna; for every add. 10 tolas or fraction, $\frac{1}{2}$ anna. **Registered Newspapers.**—Not exc. 6 tolas, $\frac{1}{2}$ anna; not exc. 20 tolas, $\frac{1}{2}$ anna; for every add. 20 tolas or fraction, $\frac{1}{2}$ anna. **Parcels.**—Not exc. 20 tolas, 2 annas; exc. 20 tolas but not exc. 40 tolas, 4 annas; for every add. 40 tolas or fraction up to 440 tolas, 2 annas. Exc. 440 tolas but not exc. 480 tolas, 3 rupees; for every add. 40 tolas or fraction, up to 2,000 tolas, 4 annas. Parcels weighing more than 440 tolas and not more than 25 seers (2,000 tolas), limit of weight, must be registered.

Commission on Ordinary Inland Money Orders.—On any sum not exc. 5 rupees, 1 anna; exc. 5 rupees, but not exc. 10 rupees, 2 annas; exc. 10 rupees, but not exc. 15 rupees, 3 annas; exc. 15 rupees, but not exc. 25 rupees, 4 annas; exc. 25 rupees, up to 600 rupees, 4 annas for each complete sum of 25 rupees and 4 annas for the remainder, provided that if the remainder does not exc. 5 rupees, the charge for it shall be only 1 anna; if it does not exc. 10 rupees, the charge for it shall be only 2 annas; and if it does not exc. 15 rupees, the charge for it shall be only 3 annas.

Telegraphic Money Orders, Inland (including cost of Telegram).—(a) For sums not exc. 25 rupees—for the first 10 rupees, 1 rupee 2 annas, advice sent "Urgent"; 10 annas, "Deferred." For the balance, not exc. 5 rupees, 1 anna; exc. 5 rupees, 2 annas. (b) For sums exc. 25 rupees but not exc. 150 rupees—for the first 25 rupees, 1 rupee 4 annas, advice sent "Urgent"; 12 annas, "Deferred." For each 25 rupees additional, 4 annas. For sums less than 25 rupees additional—not exc. 5 rupees, 1 anna; 10 rupees, 2 annas; 15 rupees, 3 annas. (c) For sums exc. 150 rupees up to 600 rupees—for the first 150 rupees, 2 rupees 8 annas, advice sent "Urgent"; 2 rupees, "Deferred." For each 50 rupees additional, 8 annas. For sums less than 50 rupees additional—not 10 rupees, 2 annas; 20 rupees, 4 annas; 30 rupees, 5 annas; 40 rupees, 7 annas.

Money Orders expressed in Indian currency up to the value of 600 rupees may be drawn on—British East Africa Protectorate (including Uganda Protectorate), British North Borneo (Sandakan and Lahuan), Ceylon, Corea (certain places), Federated Malay States, Formosa (certain places), German East Africa, Hongkong (British Offices), Japan, Japanese Agencies in China, Mauritius, Sarawak, Seychelles, Somaliland Protectorate (certain places), Straits Settlements, Zanzibar, Portuguese India (*Goa and Damão*). Money Orders can also be drawn on the following Native States—Chamba, Gwalior, Jind, Nabha and Patiala; limit of value, 150 rupees. Inland rates of commission apply to these Orders. Telegraphic Money Orders expressed in Indian currency may also be drawn on Ceylon. Limit of value is 600 rupees.

Registration Fee.—For each Letter, Post Card, Book or Pattern Packet, or Parcel to be registered, 2 annas.

Acknowledgment Charge.—For each article registered, 1 anna. **Insurance.**—Registered letters, value-payable registered letters, registered parcels, and value-payable registered parcels may be insured up to the value of 500 rupees in branch offices, and up to 2,000 rupees in other offices; when the value insured does not exceed 50 rupees, 1 anna; for every additional 50 rupees, or fraction, 1 anna.

Value-Payable Fees.—Amount specified for remittance to sender—The rates of commission as for Ordinary Inland Money Orders.

FOREIGN POSTAGE RATES.

Post Cards.—Single, 1 anna; reply, 2 annas. **Printed Papers** (including newspapers and books).—Each packet, per 2 ozs., $\frac{1}{2}$ anna. **Business Papers** (Legal and Commercial Documents).—Each packet, not exc. 10 ozs., $\frac{1}{2}$ anna; per 2 ozs. add., $\frac{1}{2}$ anna. **Samples.**—Each packet, not exc. 4 ozs., 1 anna; per 2 ozs. add., up to 12 oz. (United 5 lbs.), $\frac{1}{2}$ anna.

Postage on Letters for the United Kingdom, Egypt, British Possessions in the following list is anna for ounce or part of that weight:—Ascension, Australia, Barbados, Bermuda, British Central Africa Protectorate, British East Africa Protectorate, British Guiana, British Honduras, British North Borneo, Canada, Cape Colony, Caymans, Cyprus, Falkland Islands, Fiji, Gambia, Gibraltar, Coast Colony, Hongkong (with agencies at Shanghai, Kung Tau, Hankow, Ningpo, Foochow, Amoy, Swatow, Chefoo and Hoihow), Jamaica, Johore, Labuan, Lagos, New Zealand (including Cook or Hervey Islands, Suvarrow Islands, Fanning Island, and the Islands of Palmerston (Avarau), Savage (Niue), Danger (Pukapuka), Rakaunga, Manahiki, and Penrhyn (Tongareva)), Nigeria (Northern), Nigeria (Southern), Orange River Colony, Protected Malay States of Negri-Sembilan, Pahang, Perak and Selangor; Sarawak, St. Helena, Seychelles, Sierra Leone, Somaliland (British Protectorate), Straits Settlements, Tobago, Transvaal, Trinidad, Turks Islands, Uganda, Windward Islands (viz. Grenada, the Grenadines, St. Lucia and St. Vincent), Zanzibar.

All other countries 21 annas for each $\frac{1}{2}$ oz. or part of that weight. **Note.**—Indian Inland Rates are, however, charged to Ceylon and Portuguese India, also Aden, French possessions in India, and Indian post offices at Paani, Bahrain, Gaudar, and Muscat.

Foreign Parcel Post.—Parcels can be sent to most parts of the world. Particulars will be found in the Indian Postal Guide.

FOREIGN POSTAGE RATES—contd.

Parcels must be securely fastened and must be accompanied by a Customs Declaration, obtainable free, stating its contents and value. Parcels for United Kingdom are divided into two classes. (1) Not exc. 11 lbs. in weight, which are sent as mails to the British Post Office; and (2) exc. 11 lbs. but not exc. 50 lbs., which are forwarded by the P. & O. Company. (39 tolas = 1 lb. for foreign parcels.)

Rates by British Post Office.

| For a parcel to the United Kingdom | | Via Calcutta | | Overland | |
|------------------------------------|---------------------------------|--------------|--------|----------|--------|
| Not exc. 3 lbs. | Exc. 3 lbs. but not exc. 7 lbs. | Rs. A. | Rs. A. | Rs. A. | Rs. A. |
| | | 0 12 | 1 8 | 0 12 | 1 8 |
| | | 1 8 | 2 4 | 1 8 | 2 4 |
| | | 2 4 | 3 0 | 2 4 | 3 0 |

Rates by P. & O. Co.

For each lb. or fraction of a lb. (up to 50 lbs.) ... 8 annas. Limits of size:—6 ft. in girth and length combined, or $\frac{3}{4}$ ft. in length.

Money Order Commission.—For a Sterling Money Order—On any sum not exc. £1, 3 annas; exc. £1, but not exc. £2, 5 annas; exc. £2, but not exc. £3, 8 annas; exc. £3, but not exc. £4, 10 annas; exc. £4, but not exc. £5, 12 annas; exc. £5, 12 annas for each complete sum of £5 and 12 annas for the remainder, provided that if the remainder does not exceed £1, the charge for it shall be 3 annas; if it does not exceed £2, the charge for it shall be 5 annas; if it does not exceed £3, the charge for it shall be 8 annas; and if it does not exceed £4, the charge for it shall be 10 annas. The maximum amount of a single Order to the United Kingdom and most Countries is £40.

TELEGRAPH RATES.

(1) Telegrams to Europe.

To United Kingdom and Europe generally, except Russia and Turkey. All words in addresses, except the name of the office from which a telegram is sent, are counted when computing the charges.—From any office in India or Burma, via Suva or Telukran, per word, 1 rupee 8 annas; via Turkey, per word, 1 rupee 6 annas.

(2) Approximate Tariff of Charges per Word for Foreign Messages.

(Subject to variation through exchange.) The charges given are from Offices in India.

| Asia, East of India— | Rs. A. | Mombasa Via Bombay & Aden | Rs. A. |
|-----------------------------|---------|--------------------------------|---------|
| Amoy, Foochow Via Madras | 1 12 | Sierra Leone Via Suva | 2 1 |
| Shanghai, Hongkong | | Zanzibar Via Bombay & Aden | 2 1 |
| Canton, Macao, | 2 0 | Re. Africa Via | 3 4 |
| Whampoa | 2 0 | Canada | 2 4 |
| Kanoo, Peking, Kien | 3 1 | Brit. Columbia | 2 4 |
| Japan | 3 1 | New York State | 2 4 |
| Aden and other places— | | United States | 2 4 |
| Aden and Perim Via Bombay | 1 5 | | 2 11 |
| Russia, Asiatic, | 2 13 | SOUTH AMERICA— | |
| all places | 2 13 | Argentina Republic, | 4 10 |
| Turkey in Asia | 2 13 | Paraguay, Uruguay or Suva | |
| Cyprus | 2 8 | British Guiana | 1 11 |
| Persia | 2 8 | Brazil | 4 3 |
| AFRICA, and Islands— | | Bolivia, Chili | 3 14 |
| Cape Colony, | 2 4 | ATLANTIC OCEAN— | |
| Orange River Col. | 2 4 | New South Wales Via Madras | 1 14 |
| any, Transvaal | 2 4 | Queensland | 1 14 |
| British Central Africa | | South & West Australia | 1 14 |
| Southern Rhodesia | 3 0 | Victoria | 1 14 |
| Northern Rhodesia | 3 0 | Tasmania | 1 14 |
| Egypt—East Region | 1 8 | New Zealand | 1 2 |
| and | 1 8 | | |
| and | 1 8 | | |
| Madeira Via Suva | 2 14 | | |
| Mauritius Via Bombay & Aden | 2 13 | | |

(3) Inland Telegrams between any two offices in India or Burma.

| Class. | Unit No. of words. | Unit rate. | Each additional word. | Address. |
|------------------|--------------------|------------|-----------------------|--------------|
| URGENT | 10 | 2 0 | 0 4 | Charged for. |
| ORDINARY | 10 | 2 0 | 0 2 | Ditto. |
| DEFERRED | 10 | 0 4 | 0 2 | Ditto. |

Urgent Telegrams receive instant transmission, and have precedence over **Ordinary** and the right of special delivery at destination. **Ordinary Telegrams** are transmitted in their turn after **Urgent**, and are delivered between 5h. and 21h. These hours are subject to modification to suit local requirements. **Deferred Telegrams** are not transmitted till the wires are clear of **Urgent** and **Ordinary**, but they are delivered between 5h. and 21h. These hours are subject to modification to suit local requirements.

Telegrams to Ceylon.—From any office in India, per word, 3 annas; from any office in Burma, per word, 4 annas 6 pils.

PHASES OF THE MOON, 1907.

| New Moon; 1st Quarter; Full Moon; 1st Quarter. | | | |
|--|------------------|------------------|------------------|
| January. | February. | March. | April. |
| 7. 11h 17m a.m. | 5. 6h 21m a.m. | 6. 3h 11m p.m. | 5. 8h 50m p.m. |
| 14. 11h 57m a.m. | 12. 11h 13m p.m. | 13. 11h 33m a.m. | 12. 8h 50m a.m. |
| 21. 1h 12m p.m. | 2. 10h 52m a.m. | 24. 1h 40m a.m. | 21. 1h 14m a.m. |
| 28. 1h 52m p.m. | 9. 11h 35m a.m. | 30. 1h 41m a.m. | 28. 1h 35m a.m. |
| May. | June. | July. | August. |
| 5. 3h 50m a.m. | 2. 10h 50m a.m. | 2. 8h 40m p.m. | 1. 7h 55m a.m. |
| 12. 4h 30m p.m. | 9. 11h 30m a.m. | 9. 9h 47m p.m. | 8. 8h 50m p.m. |
| 19. 5h 10m p.m. | 16. 12h 10m p.m. | 16. 10h 47m p.m. | 15. 9h 55m a.m. |
| 26. 5h 50m p.m. | 23. 12h 50m p.m. | 23. 11h 47m p.m. | 22. 10h 55m a.m. |
| September. | October. | November. | December. |
| 3. 6h 30m p.m. | 7. 1h 30m p.m. | 6. 12h 00m a.m. | 5. 11h 50m p.m. |
| 10. 7h 10m a.m. | 14. 2h 10m p.m. | 13. 12h 40m p.m. | 12. 12h 40m p.m. |
| 17. 7h 50m a.m. | 21. 2h 50m p.m. | 20. 1h 40m a.m. | 19. 1h 20m p.m. |
| 24. 8h 30m p.m. | 28. 3h 30m p.m. | 27. 1h 20m a.m. | 26. 1h 00m p.m. |

For Burma add 1h.; Hongkong, East Coast of China, Labuan and Borneo add 1h.; Japan and Philippines add 1h.

GENERAL INFORMATION, &c.

INDIAN STAMP DUTIES.

| | Rs. A. |
|---|--|
| <i>Acknowledgment of Debts.</i> Rs. 20 | 0 1 |
| <i>Affidavit or Declaration</i> ... | 1 0 |
| <i>Agreement or Memo. of Agreement</i> , if relating to sale of a Government security, or share in an incor- porated company or other body corporate, or a bill of exchange In any other case | 0 1 0 8 |
| <i>Appointment in execution of a power</i> ... | 15 0 |
| <i>Articles of Association of Company</i> | 25 0 |
| <i>Articles of Clerkship</i> ... | 250 0 |
| <i>Award</i> , any decision in writing by an Arbitrator, other than by an Order of the Court—Where the value does not exceed Rs. 1,000, same duty as a Bond. In any other case | 5 0 |
| <i>Bill of Exchange or Promissory Note payable on demand</i> ... | 0 1 |
| Where payable otherwise than on demand, but not more than one year after date or sight— Not exc. Rs. 200, a. 2; exc. Rs. 200, not exc. Rs. 400, a. 4; exc. Rs. 400, not exc. Rs. 600, a. 6; exc. Rs. 600, not exc. Rs. 1,000, a. 10; exc. Rs. 1,000, not exc. Rs. 1,200, a. 12; exc. Rs. 1,200, not exc. Rs. 1,600, R. 1; exc. Rs. 1,600, not exc. Rs. 2,500, R. 1, a. 8; exc. Rs. 2,500, not exc. Rs. 5,000, Rs. 3; exc. Rs. 5,000, not exc. Rs. 7,500, Rs. 4, a. 8; exc. Rs. 7,500, not exc. Rs. 10,000, Rs. 5; exc. Rs. 10,000, not exc. Rs. 15,000, Rs. 9; exc. Rs. 15,000, not exc. Rs. 20,000, Rs. 12; exc. Rs. 20,000, not exc. Rs. 25,000, Rs. 15; exc. Rs. 25,000, not exc. Rs. 30,000, Rs. 18; and for every add. Rs. 10,000, or part thereof, in excess of Rs. 30,000, Rs. 6. Where payable at more than one year after date or sight, same duty as a Bond. | 0 1 0 2 0 4 0 8 0 8 2 8 |
| <i>Bond (not otherwise provided for)</i> — Not exc. Rs. 10 ... | 0 2 |
| Exc. Rs. 10, but not exc. Rs. 50 | 0 4 |
| Exc. Rs. 50, but not exc. Rs. 100 | 0 8 |
| Up to Rs. 1,000, every Rs. 1,000 | 0 8 |
| For every Rs. 500 or part, beyond Rs. 1,000 | 2 8 |
| <i>Bond, Administration, Customs, Security or Mortgage Deed</i> —For amount not exceeding Rs. 1,000, same duty as a Bond. In any other case | 5 0 |
| <i>Consent</i> ... | 5 0 |
| <i>Certificate or other Document</i> relating to Shares ... | 1 0 |
| <i>Charter Party</i> ... | 1 0 |
| <i>Cheque</i> ... | 0 1 |
| <i>Composition—Died</i> ... | 10 0 |
| <i>Conveyance, not being a Transfer</i> — Not exceeding Rs. 50 ... | 0 8 |
| Exc. Rs. 50, not exceeding Rs. 100 ... | 1 0 |
| For every Rs. 100 in excess of Rs. 100 up to Rs. 1,000 ... | 1 0 |
| For every Rs. 500, or part thereof, in excess of Rs. 1,000 ... | 5 0 |
| <i>Copy or Extract</i> —If the original was not chargeable with duty, or if duty with which it was charge- able does not exceed 1 Rupee In any other case | 0 8 1 0 |
| <i>Counterpart or Duplicate</i> —If the duty with which the original instrument is chargeable does not exceed one rupee—The same duty as is payable on the original. In any other case | 1 0 |
| <i>Delivery Order</i> ... | 0 1 |
| <i>Entry in any High Court of an Advocate or Vakil</i> ... | 500 0 |
| In the case of an Attorney | 250 0 |
| <i>Instrument</i> — Apprenticeship ... | 5 0 |
| Divorce ... | 1 0 |

INDIAN STAMP DUTIES—contd.

| | Rs. A. |
|--|------------|
| Other than Will recording an adoption or conferring or pur- porting to confer Authority to adopt ... | 10 0 |
| <i>Lease</i> —Where rent is fixed and no premium is paid, for less than 1 year, same duty as bond for whole amount; not more than 3 years, same as Bond for average annual rent reserved; over 3 years, same as Conveyance for consideration equal to amount or value of the average annual rent reserved; for indefinite term, same as Conveyance for amount equal to 10 years' rent; in perpetuity, same as Conveyance for con- sideration equal to one-fifth of rents paid in respect of first 50 years. Where there is premium and no rent, same as Conveyance for amount of premium; premium with rent, same as Conveyance for amount of premium, and same duty as Lease without premium. | |
| <i>Letter</i> — Allotment of Shares ... | 0 1 |
| Credit ... | 0 1 |
| License ... | 10 0 |
| <i>Memo. of Association of Company</i> —If accompanied by Articles of Association ... | 15 0 |
| If not so accompanied ... | 40 0 |
| <i>Notarial Act</i> ... | 1 0 |
| <i>Note or Memo. on Sale of Goods or Stock</i> , exceeding Rs. 20 ... | 0 1 |
| <i>Note of Protest</i> by a Ship's master <i>Partnership</i> —Where the capital does not exceed Rs. 500 ... | 0 8 2 8 |
| In any other case ... | 10 0 |
| Dissolution of ... | 5 0 |
| <i>Policy of Insurance</i> — (1.) <i>Sea</i> —Where premium does not exceed rate of 2 a., or $\frac{1}{2}$ per cent. of amount insured ... | 0 1 |
| In any other case for Rs. 1,000 or part thereof ... | 0 2 |
| (2.) <i>For time</i> —For every Rs. 1,000 or part insured, not exc. 6 months ... | 0 2 |
| Exceeding 6 and not exceeding 12 months ... | 0 4 |
| (3.) <i>Fire</i> —For 1 month or less, not exceeding Rs. 1,000 ... | 0 2 |
| For every further Rs. 1,000 or part More than 1 and not exc. 3 months, not exc. Rs. 1,000 ... | 0 2 0 3 |
| For every further Rs. 1,000 or part More than 3 months, not exceed- ing 6 months, per Rs. 1,000 ... | 0 4 0 6 |
| Exc. 6 months, per Rs. 1,000 ... | 0 6 |
| (4.) <i>Accident and Sickness</i> — Against Railway accident, valid for a single journey only ... | 0 1 |
| In any other case—for the maxi- mum amount which may be- come payable in the case of any single accident or sickness where such amount does not exc. Rs. 1,000, and also where amount exc. Rs. 1,000, for every Rs. 1,000 or part ... | 0 2 |
| (5.) <i>Life, or other Insurance</i> , not specifically provided for, per Rs. 1,000 ... | 0 6 |
| In case of a re-insurance by one Company with another—of duty payable in respect of the original insurance, but not less than 1 anna, or more than 1 R. <i>Power of Attorney</i> — For the sole purpose of procur- ing the registration of one or more documents in relation to a single transaction or for admitting execution of one or more such documents ... | 0 8 0 8 |
| Authorising 1 person or more to act in a single transaction other than that mentioned above ... | 1 0 |
| Authorising not more than 5 persons to act jointly and severally in more than 1 trans- action, or generally ... | 5 0 |

INDIAN STAMP DUTIES—contd.

| | Rs. A. |
|--|--------------------------|
| Authorising more than 5 but not more than 10 persons to act ... | 10 0 |
| When given for consideration and authorising the Attorney to sell any immovable property— The same duty as a Conveyance for the amount of the consideration. In any other case, for each per- son authorised ... | 1 0 1 0 0 1 0 1 |
| <i>Protest of Bill or Note</i> ... | 1 0 |
| <i>Proxy</i> ... | 0 1 |
| <i>Receipt for value exc. Rs. 20</i> ... | 0 1 |
| <i>Shipping Order</i> ... | 0 1 |
| <i>Surrender of Lease</i> —When duty with which Lease is chargeable does not exceed Rs. 5—The duty with which such Lease is chargeable. In any other case ... | 5 0 |
| <i>Transfer of Shares</i> —One quarter of the duty payable on a Con- veyance for a consideration equal to the value of the share. | |
| <i>Transfer of any Interest</i> secured by a Bond, Mortgage-deed, or Policy of Insurance—If duty on such does not exceed Rs. 5—The duty with which such Bond, &c., is chargeable. In any other case ... | 5 0 |
| <i>Transfer of Lease</i> by way of as- signment and not by way of under-lease—The same duty as a conveyance for a consideration equal to the amount of the con- sideration for the transfer. | |
| <i>Trust, Declaration of</i> —Same duty as a Bond for a sum equal to the amount or value of the property concerned, but not exceeding ... | 15 0 |
| Revocation of—Ditto, but not exceeding ... | 10 0 |
| <i>Warranty for Goods</i> ... | 0 4 |

FOREIGN MONIES, AND THEIR ENGLISH EQUIVALENTS.

| | £ | s. | d. |
|--|----|----|----|
| <i>America</i> —(United States) Eagle | 2 | 1 | 1 |
| Dollar of 100 Cents | 4 | 2 | 1 |
| Cent (about) | 0 | 0 | 4 |
| <i>Austria</i> —Silver Crown | 0 | 10 | 10 |
| to Kreuzers | 0 | 0 | 2 |
| <i>Belgium</i> —Gold Ten-Franc Piece | 7 | 11 | 11 |
| Silver Five-Franc | 3 | 11 | 11 |
| One-Franc | 0 | 0 | 91 |
| <i>Denmark, Norway and Sweden</i> —Krone | 0 | 1 | 11 |
| 100 Ore = 1 Krone | | | |
| <i>Egypt</i> —Gold 100 Piastre Piece (Egyptian £) | 1 | 0 | 31 |
| One Piastre | 0 | 0 | 0 |
| <i>France</i> —Gold Twenty-Franc Piece | 15 | 10 | 12 |
| Silver Five-Franc Piece | 3 | 11 | 11 |
| Franc | 0 | 0 | 91 |
| <i>Germany</i> —(New Coinage). Gold 50 Mark Piece | 10 | 10 | 10 |
| 10 " " | 2 | 0 | 0 |
| Silver 5 " " | 0 | 10 | 0 |
| " 1 " " | 0 | 0 | 0 |
| " 2 Thaler Pieces | 0 | 0 | 0 |
| <i>Greece</i> —Twenty Drachma Gold Piece (One Drachma (silver)) | 0 | 0 | 0 |
| <i>Holland</i> —Ten Florin (Gulden) | 10 | 0 | 0 |
| Floris (Gulden) | 0 | 0 | 0 |
| <i>India</i> —Rupee (varying in value) | 1 | 0 | 0 |
| " " | 0 | 14 | 11 |
| Since 1899 the Government has been legal- tender at the ratio of 15 rupees to the £ sterling (= $\frac{1}{15}$ the rupee). | | | |
| <i>Italy</i> —Gold 50-Lire Piece | 10 | 0 | 0 |
| " 5 " " | 2 | 0 | 0 |
| 1 Lira (Silver) | 0 | 0 | 11 |
| <i>Japan</i> —Gold 25 Yen Pieces | 2 | 0 | 11 |
| Silver 50 Sen | 0 | 3 | 11 |
| Value in exchange—1 Yen = 100 Sen = $\frac{1}{100}$ | | | |
| <i>Portugal</i> —Gold Milreis | 0 | 0 | 4 |
| Silver Half " " | 0 | 0 | 2 |
| 100 Reis | 0 | 0 | 0 |
| <i>Russia</i> —Half Imperial | 15 | 10 | 0 |
| Silver Rouble | 0 | 2 | 11 |
| Ten-Copek Piece | 0 | 0 | 0 |
| <i>Spain</i> —Gold 25 Pesetas | 2 | 0 | 11 |
| (Silver)—5 Pesetas | 0 | 3 | 11 |
| " 1 " " | 0 | 0 | 1 |
| " 1 " " | 0 | 0 | 0 |
| <i>Switzerland</i> —Gold 50-Franc Piece | 10 | 15 | 10 |
| Silver 5-Franc Piece | 0 | 15 | 10 |
| " 1 " " | 0 | 0 | 0 |
| <i>Turkey</i> —Gold Medjidie | 0 | 0 | 0 |
| Silver Medjidie | 0 | 0 | 0 |
| Piastre | 0 | 0 | 0 |

CONCISE DIRECTORY.

We have inserted this short Directory for the use of our Subscribers under the impression that it will prove of utility to country and foreign residents who may desire to communicate with a House in any particular Trade or Profession, and have no means at hand of knowing whom to address.

AERATED WATER MACHINERY—
Moseblech's Patents. Small hand Apparatus,
producing unrivalled quality, to largest power
installations. John Sargent & Co.,
25, Bucklersbury, London, E.C.

AIR COMPRESSORS—Hughes & Lancaster,
16, Victoria Street, London, S.W.
Makers of "Shone" Pneumatic Automatic
Ejectors for raising Sewage, &c.

ALUM MANUFACTURERS—Australian Alum Co.,
Ltd., Runcorn, Cheshire. Clear Crystal Alum.
Pure Potash Alum. Special Alum for Paper-
making.

**ALUMINOUS SULPHATE FOR WATER PURIFI-
CATION. PAPER MAKERS AND DYERS**—
H. D. Pochin & Co., Ltd., Manufacturing
Chemists, Salford, Manchester.

ANTIQUE FURNITURE DEALERS—
Gill & Reigate, Ltd., 73-85, Oxford-street,
London, W. The largest stock of genuine
Antiques in London. Separate departments
for Modern Furniture copied from old designs.

ARTESIAN WELLS—Le Grand & Sutcliffe,
125, Brompton-road, London, E.C.

ASBESTOS—The United Asbestos Co., Limited,
Dock House, Billiter-street, London, E.C.
Asbestos Goods, Engineers' Stores, Lubri-
cating Oils, Creams and Greases, Boiler and
Pipe Covering Composition. Tele. Add.:
"Asbestos, London."

AXES, HATCHES & HOOKS—Ed. Elwell, Ltd.,
Wednesbury Forge, Wednesbury.
Telephone No. 42.

BACON AND HAM CURERS AND EXPORTERS—
Chas. & Thos. Harris & Co., Ltd., Calce,
Wiltshire, England. Genuine Wiltshire Bacon
and Hams. Gold Medals, Paris, 1889 and 1900.

BAGS AND SACKS—For all descriptions of
Produce for Home and Foreign Markets.
J. De Paiva & Co., Ltd., Drury Lane, Liverpool.
Telegrams: "De Paiva, Liverpool." Tele-
phones: 1343 and 1363; Liverpool, Central.

BALATA AND COTTON BELTING—
Arthur Cort & Co.,
277, Camberwell New-road, London, S.E.
Tele. Add.: "Cort, Camberwell, London."

BAR IRON AND STEEL—
Sir Theodore Fry & Co., Ltd.,
Rise Carr Rolling Mills, Darlington.
Contractors to the British Admiralty.

BENT CRANES AND FORKINGS—
Woodhouse & Rixson, Sheffield. Bent
Cranes, Round and Square Section, Forged
or Finished. All kinds of Shipwork.

BIBLES, PRAYER BOOKS & DEVOTIONAL WORKS—
Oxford and other Editions. Lists sent post
free. The London Bible Warehouse,
53, Paternoster Row, London.

BILLIARD AND BAGATTELLE TABLE MAKER—
George Edwards, 134, Kingsland-road,
London, N.E. All Tables have the low and
fast Cushions, not affected by any climate.
Also large stock of Second-hand Tables. P.O.
Telephone, 4780, Central.

BINOXIDE OF BARIUM (for the Manufacture of
Peroxide of Hydrogen), Hydrate of Baryta,
and other Barium compounds. The Hedworth
Barium Co., Ltd., Newcastle-on-Tyne.

BIRD SEEDS—R. Hyde & Co., Camberwell,
London. Aesthetic Bird Seeds, Parrot Food,
Shell Gravel, &c. in packets. Sold everywhere.

BISCUIT MACHINERY MANUFACTURERS—
Vicars, T. & T., Earlestown, Lancashire;
and 20, Bucklersbury, London, E.C.
Tel. Add.: "Vicars, Earlestown"; "Vicars-
ship, London."

Patentees and Makers of most Modern
Machinery for Mixing, Breaking, and Cutting,
including Patent Biscuit Embossing Machine,
Travelling and other Ovens, ordinary and
Embossing Cutters, and all requisites for
Complete Installations.

BLACKING—The "Nugget" Polish Co., Ltd.,
Kennington Oval, London, S.E.
Waterproof Black and Brown Boot Polishes
and Creams. Harness and Furniture Polishes.

BLOTTING PAPER MANUFACTURERS—T. B.
Ford (Ltd.), Suckley Mill, Loudwater, Bucks.
Samples and Prices on application. Each
sheet water-marked "Ford, 428 Mill."

BOILER COVERING—Magnesia Coverings, Ltd.,
Washington, Co. Durham, England. Sole Makers
of Magnesia Sectional and Plastic Coverings.
Tele. Add.: "Chemical," Washington Station.

BOLT & NUT, SCREW & NUT MAKERS—
Herbert W. Perian, Limited,
Floodgate-street Works, Birmingham.
Also maker of Washers and Roofing Nails.

BOOTS AND SHOES—J. & E. Reynolds,
Chesham, Bucks. Manufacturers of all classes
of Boots and Shoes for South Africa and General
Export and Home Trade.

BOOT UPPERS—Brown & Sons (Welling-
borough), Ltd., Wellingborough.

Mfrs. of the "Diamond" mark of Boot
Uppers, suitable for all climates and conditions.
Tel. & Cable: "Upfers, Wellingborough."
Telephone, 0186 Wellingborough.

**BUILDINGS, PORTABLE WOOD AND IRON,
&c., &c.**—Boulton & Paul, Limited, Manufac-
turers, Rose Lane Works, Norwich.

BUNTING MANUFACTURERS—E. Riley & Co.,
Providence-street Mills, Leeds.

CANVAS AND TARPULIN MANUFACTURERS—
Walter H. Hindley & Co., 62 & 63, Queen-
street, Chapside, London, E.C. T.:
No. 9771 Central; T. A.: "Hindley," and
Royal Exchange Place, Dundee, Scotland.

CARDON PAPER AND TYPEWRITER RIBBONS—
Lancaster Paragon Supply Co., Ltd.,
4, St. Paul's Churchyard, London, E.C.
Tele. Add.: "Placid."

CARRIAGE MANUFACTURERS—
Henry Whitlock, Ltd., Manufacturers of
"Whitlock-Aster" Cars, Whitlock Auto-
mobile Co., Ltd., High-st., Kensington,
London, W. Tel. Add.: "Carmender,
London." Tel. No. 260, Kensington.

CERAMIC COLOUR MANUFACTURERS—
James Hancock & Sons, Diglis Ceramic Art
Colour Works, Worcester.

Colours, Glazes and Stains for China, Earth-
enware, Glass, Bricks, Enamelled Iron, &c. Also
Colours and Materials for Photo-Ceramics.

CHINA—The Worcester Royal Porcelain Co.,
Ltd., Worcester. Ornamental Porcelain—
China and Vitrified Table Services—Worcester
China may be obtained of the principal China
Dealers.

CINEMA PHOTOGRAPHS—
Biocopes, Films and every requisite.
L. Gaumont & Co. The largest Manufac-
turers in the World. 22 to 27, Cecil Court,
Charing Cross-road, London, W.C.

Cables: "Obiectisti, London." Codes:
A.B.C., Liebers and Western Union.

COLOURED PAPERS—Thomas & Green, Ltd.,
Sole Mills, Walsolun, Bucks, and 106,
Upper Thames-st., London, E.C. Tele. Add.:
"Thomas, Woburn," and "Rainbow, London."

COPIING APPARATUS MANUFACTURERS—
The Copying Apparatus Co., Limited,
123, Cannon-street, London, E.C.

Simplex Hectograph, Neo-Cyclostyle, A.B.C.
Copier, Automatic Cyclostyle, Edison Mimeo-
graph, Duplicator, Hectograph, &c. Write
for Circular.

COTTON BAGS—
From 1 to 140 lbs., in white and unbleached
Calico. T. & W. Judge. Original and
Largest Manufacturers and Printers, Cumber-
land Works & Manchester Works, Kennington,
London. Tele. Add.: "Cotton Bag, London."

COTTON DUCKS—
John Bright & Bros., Ltd., Rochdale.
Telegrams: "Brights, Rochdale"; Tele-
phone Nos.: Rochdale, 16 and 259; Man-
chester, 1,004.

COTTON GOODS—Kenyon, James, & Son,
Roach Bank Mills, Bury, Lancashire.
Manufacturers of Longcloths, Shirtings,
Sheetings, Flannelettes, &c. Trade Mark:
Three Acrobats. Tele. Add.: "Camellia, Bury."

COTTON WASTE—
Rigby, Wainwright & Co.,
Neptune Works, Manchester.
Engine Waste, Sponge Cloth, and Lamp
Wick Mfrs. Tele. Add.: "Seaking." A.B.C.
Code.

CRANES AND LIFTING MACHINERY—
Thomas Smith & Sons, Steam and Electric
Crane Works, Old Foundry, Rodley, near
Leeds. Tele. Add.: "Smith, Rodley."

London Office, 9, Victoria-st., Westminster.
S.W. Tele. Add.: "Acrocher, London."

DISINFECTORS (STEAM)—Manlove, Allott &
Co., Ltd., Engineers, Nottingham; also
Laundry Machinery & Hydro-Extractors.

DISINTEGRATORS (Carter's)—
Sole Manufacturer: J. Harrison Carter.
Works: Dutable, London Offices: 82, Mark
Lane, E.C. Tele. Add.: "Milling, Dutable."

DON BISCUITS—Walker, Harrison & Garth-
waites, Ltd., Phoenix Biscuit Works,
Ratcliff Cross, London, E.

ELECTRICAL ENGINEERS & CONTRACTORS—
Crompton & Co., Limd, Salisbury House,
London Wall, London, E.C. Works: Chelms-
ford, England. Manufacturers & Contractors
for complete Electrical Equipment.

**ELECTRIC LIGHT PILLARS, BRACKETS,
CARRIERS, &c.**—Walter Macfarlane & Co.,
Architectural, Sanitary and General Iron-
founders, Saracen Foundry, Glasgow.

**EMBROCATION, FOR ANIMALS AND FOR
HUMAN USE**—Edman, Sons & Co., Slough,
England. The Edman First Aid Book—
Animals' Treatment. The Edman R. E. P.
Book—Human Treatment.

ENAMELLED LETTERS AND TABLETS—
Garnier & Co., Inventors and Actual Makers,
86, Farringdon-street, London, E.C., and
Ludgate Enamelling Works, Willesden.

ENGLISH PRESERVED PROVISIONS—
Harry Peck & Co., Snow Hill, London.
Table Delicacies and Fancy Cheeses, packed
in Tins and Glasses for Export; fine fancy
Groceries. Sole Manufacturers of the cele-
brated "Archer" Brand Potted Meats and
Fish, Galantines, Tongues, Pâtés, Soups,
Sausages, and Preserved Provisions.

ENQUIRIES—
Mercantile Reports, Home and Foreign.
Institute W. Schimmelpfeng, 137, Cheap-
side, London, E.C., and Manchester;
also Offices in Amsterdam, Berlin, Brussels,
Constantinople, Paris, Vienna, Zurich, &c.
Staff exchequer, 1600.

FANCY GOODS AND TOYS—
Purses, Bags, and such like.
Faulds, Newgate-street, London.

FLAOS—E. Riley & Co.,
Providence-street Mills, Leeds.

FLOUR MILLERS—W. Vernon & Sons,
Liverpool and London. Manufacturers of
Millennium Flour. 90 Gold Medals.

FRICTION CLUTCH & GEARING MAKERS—
David Bridge & Co.,
Hazel Iron Works, Castleton, near Man-
chester. 200-page Catalogue Free.

GAME & POULTRY FOODS—
Walker, Harrison & Garthwaites, Ltd.,
Phoenix Biscuit Works,
Ratcliff Cross, London, E.

GAS METER MANUFACTURERS—
Thomas Glover & Co., Ltd., 49, Queen
Victoria-street, London, E.C.

Original Makers of the Dry Gas Meter.
Prepayment Meters, and every coin.

**GAS, STEAM & COAL COOKING & HEATING
APPARATUS**—R. & A. Main, Ltd., 49, Queen
Victoria-street, London, E.C., and Gothic
Foundry, Falkirk, N.B.

GAUGE GLASS MANUFACTURERS—
Tomey & Sons, Tay Glass Works, Perth,
Scotland.

Sole Makers of the "Eureka" Gauge Glass.

GLASS BOTTLE MANUFACTURERS—
Cannington, Shaw & Co., Limited,
St. Helens, Lancashire, England.

Manufacturers of Glass Bottles, Codd's
Ebonite Screw and Crown Cork Mouth
Confectioners' Bottles, Boxes and Cases.

GLAZIERS' DIAMONDS—Bush & Cuipier,
47, Percival-st., Goswell-road, London, E.C.
Mfrs. of Tube Cutters, Tools for Turning
Emery Wheels. Export a speciality. Estab.
1874.

GLAZING FOR ROOFS—
Mellows & Co., Ltd. Works, Sheffield.
And at 28, Victoria-street, London.
Patent "Eclipse" Glazing. No put
asbestos nor maintenance required.

test. Millions of feet glazed.

GOLDEN SYRUP—
Abram Lyle & Sons, Ltd.,
21, Mincing Lane, London, E.C.
Manufacturers of the celebrated "Lyle's"
Golden Syrup, in 1-lb., 2-lb., 4-lb., and 14-lb.
tins, obtainable of all High-class Grocers.

GRAB DREDGING & EXCAVATING MACHINERY—
(The Kingston Patent)—Rose, Down,
Thompson, Limited, Old Fording, Hull; and
12, Mark-lane, London, E.C.

GREENHOUSES, CONSERVATORIES, &c., &c.—
Boulton & Paul, Limited, Manufacturers,
Rose-lane Works, Norwich.

GUN AND RIFLE MAKER—Charles Lancaster.
(Est. in 1826, at 151, New Bond-st., London.)
To H.M. the King, H.I.M. the German
Emperor, &c., &c.

"The Art of Shooting," post free, 3s.
11, Fenton-street, Haymarket, London, S.W.
(opposite Comedy Theatre). Phone 3691,
Gerrard. Tel. "Oval Bore London."

**HYDRAULIC MACHINERY, PRESSES, PUMPS,
ACCUMULATORS, RIVETTES, VALVES, &c.**—
Henry Berry & Co., Ltd., Leeds.

ICE-MAKING & REFRIGERATING MACHINERY—
H. J. West & Co., Ltd., 118, Southwark
Bridge-road, London, S.E. Contractors to H.M.
Government, India Office, &c., and several
Foreign Governments. Over 2,750 machines
sold. Requirements of Brewers, Butchers,
Hotels, Yachts, &c., specially studied.

LEAD GLAZING—Grover & Co., Ltd., Wharf-road, London, N. Simplex Lead Glazing for Roofs, Skylights, &c.
No special contract required. Millions of feet in use. Any quantity supplied.

LEATHER CLOTH MANUFACTURERS—British Leather Cloth Mfg. Co., Ltd., Hyde, near Manchester.

Makers of "Rexine" Leather Substitutes for Upholsterers, Bookbinders, Carriage and Motor Car Builders, &c.

LEGGINGS—Brown & Sons (Wellingtonborough), Ltd., Wellingtonborough.
Mfrs. of the "Diamond" mark of Leggings, suitable for all climates and conditions.
Tel. & Cable: "Uppers, Wellingtonborough." Telephone: 6186 Wellingtonborough.

LIGHTNING CONDUCTORS, and everything in connection with them, supplied and fixed by J. Lewis, 5 & 6, Great Winchester-st., London, E.C. Admiralty Contractors.
Telephone: 3053 Central.

LUBRICATING OILS—W. H. Wilcox & Co., Ltd., 23, Southwark-street, London, S.E. Oil Refiners. General Lubricating and Cylinder Oils.

MACHINERY STORES FOR ENGINEERS, MINES, MILLS, TEA GARDENS, &c.—George Hatch, Ltd., Queenshithe, London, England.
Illustrated Catalogues.

MANTLE MANUFACTURERS (to the Trade and Shippers only)—Corby, Palmer & Stewart, 39, 40, 41, St. Paul's Churchyard, London, E.C. Ladies' and Children's Mantles, Jackets, Capes, Blouses, Mackintoshes, Imperial Cloaks, Fur Capes, Skirts, Costumes, Opera Mantles, and Furs.
MAPS: PUBLISHER, MAPSELLER AND GEOGRAPHICAL BOOKSELLER—Edward Stanford, 12, 13, and 14, Long Acre, London, W.C. Geographer to His Majesty the King. Catalogues Free.

MECHANICAL STOKER MANUFACTURERS—Vicars, T. & T., Earlestown, Lancashire; and 20, Bucklersbury, London, E.C.
Tel. Add.: "Vicars, Earlestown"; "Vicars-ship, London."

New Improved Patent Smokeless Self-cleaning Stokers, for various types of Steam Boilers, Natural and Induced Draught, including Fuel Elevators and Conveyors in connection therewith.

METALS AND ALLOYS (Special)—The Phosphor Bronze Co., Ltd., Southwark, London, S.E. Ingots and Castings in Phosphor, Manganese and Aluminium Bronze, Gun Metal, &c. Bronze Bars, Rods, Strip and Sheet.

MINING, QUARRYING AND AGRICULTURAL TOOLS—The Hardy Patent Pick Co., Ltd., Sheffield.

MUSIC PUBLISHERS—Edwin Ashdown, Limited, Hanover-square, London, W.; New York and Toronto.

OIL SEED CRUSHING, REFINING AND FILTERING MACHINERY—Rose, Downes & Thompson, Limited, Old Foundry, Hull; and 12, Mark-lane, London, E.C.

OPAL WALL TILES, LETTERS, AND ADVERTISING PLATES—Permanent Decorative Glass Co., Limited, Crown's Works, Lancaster; Coventry-house, 5, Bee, London, E.C. Best Opal Tile and "Florite."

PAPER HANGERS—Alex. Pirie & Sons, Limited, Sowerwood Works, Aberdeenshire, and 97, Farringdon-street, London, E.C.
Tel. Add.: "Pirie, Aberdeen."

PAPER AGENTS—Jensen & Son, 77, Chancery-lane, London, W.C. Agents, Designs and Trade Marks secured all over the World.

REPAIRERS—John Brinsmead & Sons, Ltd., 18, 20 and 22, Wigmore-street, London, W. By Special Appointment to their Majesties the King and Queen.

Telegram: "Brinsmead, London."

PICKS—The Hardy Patent Pick Co., Ltd., Sheffield.

PINS, HAIR PINS, SAFETY PINS—D. F. Taylor & Co., Ltd., Birmingham. The Original Inventors of the Solid Headed Pins. London Office, 10, Manchester-avenue, E.C.

PLASTERS (MEDICAL) AND SURGICAL BANDAGES—A. de St. Dalmaz & Co., Leicester. Spread Plasters, Adhesive, Soap, Belladonna, etc. Porous Rubber Plasters, Mustard Leaves, Corn and Corn Plasters. All kinds of Surgical Bandages. Adhesive Plaster specially prepared and packed for export.

PLATINUM REFINERS AND DEALERS—Johnson, Matthey & Co., Ltd., 74-81, Hatton Garden, London, E.C.

Platinum Apparatus—Sheet, Foil, Wire, Crucibles, &c. Gold and Silver Refiners. Standard Silver, Circles, Sheet, Wire, &c.

PLIC BOOKS—Lamson Paragon Supply Co., Ltd., Canning Town, London, E. City Office; 4, St. Paul's Churchyard, London, E.C.
Tele. Add.: "Plaudit."

POLISHES—The "Nugget" Polish Co., Ltd., Kennington Oval, London, S.E.

Waterproof Black and Brown Boot Polish and Creams. Harness and Furniture Polish.

POLISHING POWDER—J. F. Baumgartner & Co., (C. D.) 74, Newman-street, London, W.
"La Brillantine" Metallic Powder. The best and cheapest Polishing Powder for Metals and Glass (especially Brass).

POSTAGE STAMP MERCHANTS AND PHILATELIC PUBLISHERS—Whitfield King & Co., Ipswich.

Foreign and Colonial Postage Stamps for Collectors. Publishers of the Standard Postage Stamp Catalogue, price 1/6, post free. Also of the "Standard" and "Paragon" Postage Stamp Albums.

PRINTERS' ROLLERS AND COMPOSITION—"The Durable" Printers' Roller Co., Ltd., Charles-st., Hutton-gdn., London, E.C.

Contractors to H.M. Printing Office. Composed for Home and Export. Send for "Right-Hand of the Press," free by post.

PRINTING INKS—Ch. Lorilleux & Co., 2, Maclean's Buildings, E.C., and 42, Vicar Lane, Bradford.

The oldest and largest Manufacturers in the World. 10 Factories.

PRINTING MACHINERY OF ALL KINDS—William Dawson & Sons, Ashfield Foundry, Otley, Yorks. Inventors and Patentees of the Original "Wharfedale."

PUMPING MACHINERY MANUFACTURERS—Pulsometer Engineering Co., Limited, Reading, England.

Sizes: Pumps for all duties, including "The Pulsometer," the best odor pump.

RAILS (STEEL)—12 to 28 lbs. per yard, for mines, collieries, etc.
Sir Theodore Fry & Co., Ltd., Rise Carr Rolling Mills, Darlington.

ROAD MATERIALS—Mountsorrel Granite Company, Limited, Mountsorrel, near Loughborough.
Full Particulars and Prices on application.

Tele. Add.: "Granite, Mountsorrel."

ROCK DRILLS—The Hardy Patent Pick Co., Ltd., Sheffield.

ROPE MANUFACTURERS—R. Hood Hagg & Son (Limited), Newcastle-on-Tyne and London.
Estbd. 1789. Makers of Ropes of all kinds. Speciality—Robin Hood Brand Manila Rope. (Foreign Orders through Merchants.)

RUBBER STAMP AND PAD MAKER—M. Lindner, Farringdon-ave., London, E.C.
Patent "Air Cushion" Rubber Stamps; Time and Labour-saving Office Appliances. Catalogue Free.

SAFES AND STEEL DOORS—Frederic Whitfield & Co., Goddalin-house, Goddalin-street, London, E.C.

Works: Oxford-street, Birmingham.

SALES FOR THE TABLE, THE BATH AND THE GARDEN—D. Burnsted & Co., 36, King William-street, London, E.C.

SAUSAGES MANUFACTURERS—Palthorpe, Ltd., Dudley Port, Staffs. Manufacturers of Royal Cambridge Sausages and Pork Pies, &c. Largest Makers in the World. Makers to the late Queen. 14 Gold Medals.

SAW MANUFACTURERS—J. Beardshaw & Son, Ltd., Baltic Steel Works, Sheffield.
Telephone No. 77.
Tele. Add.: "Beardshaw," Sheffield.

SEALING WAX—George Warriston & Sons, Edinburgh.
81, Bridge Street, City, London, E.C.

Makers of the "Bee Brand" Letter, Parcel and Bottle Waxes for all climates.

SEED GROWERS AND MERCHANTS—Sutton & Sons, The King's Seedmen, Reading.

Farm Seeds, Garden Seeds and Bulbs, specially selected and packed for all parts of the World. Full Price Lists free on application.

SELF-RAISING FLOUR—Coomb's "Eureka" Flour Co., Ltd., Nottingham and London, 21 Gold Medals. Further Specialities:—"Lady's" Cake Flour, Malted Food, Fruit Saline, Health Salt, Gravy Salt, Custard, Blancmange, Egg and Baking Powders in tins and packets.

SHEEP DIP—William Cooper & Nephews, Manufacturers of Cooper's Sheep Dipping Powder, the ORIGINAL POWDER DIP.

Works: Berkhamsted, England. Branch Houses: Sydney, East London, Buenos Ayres, Odessa, Chicago and Auckland.

SHIP AND EXPEDITION DISBURTS—Walker, Harrison & Garthwaits, Limited, Phoenix Disent Works, Ratcliff Cross, London, E.

SHOVELS AND SPADES—The Hardy Patent Pick Co., Ltd., Sheffield.

SLATES, SLATE SLABS, CISTERNES, &c.—Davies Bros, Portmadoc, N. Wales.

Blue, Red and Green Roofing Slates, Slate Slabs, Urinals, Lavatories, Cisterns, &c. Home and Export. Telegrams: "Seivard."

STAIR TREADS—Mason's Patent Non-Slipping. The only Perfect Tread. Made exclusively by The Safety Tread Syndicate, Ltd., 15, Barbican, London, E.C. Telephone No. 5646 Bank.

Telegraphic Address: "Unslipping," London. STEAM ENGINES AND MILL GEARING—Woodhouse & Mitchell, Ltd., Brighouse, England. Estd. 1867.

Contractors to H.M. War Dept. Cable: "Woodhouse, Brighouse, England." A.I. Code. Makers of Engines up to 1,000 horse-power.

STEAM ENGINE PACKING—United Patent Machinery Packing Co., Ltd., Soho Works, Bradford.

Telegraphic and Cable Address: "Metallic, Bradford." Codes: A.B.C. and Liebers.

STEEL—The Hardy Patent Pick Co., Ltd., Sheffield.

STEEL IRON MAKING MACHINES—W. Mitchell, Cannon-street, London, E.C., and Washington Works, Cumberland-street, Birmingham.

TAILORS AND OUTFITTERS—Bryant & Co., 1, Colonnade, Cheltenham. High-class Tailors, supplying Tropical Clothing and Linen in all parts of the World.

TILE MANUFACTURERS—Craven Dunnill & Co., Limited, Jackfield, R.S.O., Shropshire.

Tiles of all kinds, Encaustic, Plain, Enamelled, Glazed, Majolica, Printed, Painted, Lustre, Ceramic Mosaic, Constructional Faience. London Office: 27, Maddox-street, W.

TRUNK AND BAG MANUFACTURERS—John Pound & Co., 81-84, Leadenhall-street; 67, Piccadilly; 211, Regent-street; 378, Strand; and 177-8, Tottenham Court-road, London.

The largest manufacturers of their kind.

TYPE COMPOSING MACHINES—Linotype & Machinery, Limited, 188 & 189, Fleet Street, London, E.C.

Works: Broadheath, near Manchester. Makers of the Linotype Composing Machine for Newspaper and General Printing.

TYPEWRITERS—Remington Standard. (New Model) All kinds of Typewriter Supplies. Remington Typewriter Co., 100, Gracechurch-street, London, E.C.

Telephone Nos. 5545, 5546, 5555 and 5556, Avenue.

VARNISH MAKERS—Postans & Co., Lionel-street, Birmingham, England.

Varnishes for Coach Builders, Decorators, Boat Builders, Joiners, and other trades.

VAT AND COOKER'S SPLASH HOOPS—Special Guaranteed Quality. Wilcock and Jones, Ltd., South Yorkshire.

Hoop Iron Works, Rotherham.

WASHING AND MANGLING MACHINES (Hand and Power)—Smith & Paget, Crown Works, Keighley. Estimates free complete Plans.

WEBS AND TWINES—Arthur Hart, Crewkerne, England. Manufacturer of Webs for the Saddlery, Upholstery, and other Trades. In Cotton, Jute, Hemp, Linen, Union and Worsted, for the English, Colonial and Foreign Markets, for Military and Government purposes, &c., &c. High-class Upholstery Twines.

WEED KILLER—Acme Chemical Co., Ltd., Tonbridge, Kent, and Bolton, Lancs.

The "Acme" Weed Killer permanently destroys Weeds and Scrubs growing upon walks, roads, &c., by one application.

WEIGHING MACHINES—Henry Pooley & Son, Ltd., 11, Temple-street, Birmingham.

WHOLESALE CLOTHING—Chamberlins, Ltd., Army, Railway and General Uniform Contractors, Clothing, Shirt and Oilskin Mfrs., Norwich.

Tele. Add.: "Chamberlins, Norwich." A.B.C. 51, 52, 53.

WIRE ROPE AND ROPEWAYS—Bullock & Co., Limited, 72, Mark-lane, London, E.C.

Wire Ropes for all purposes. Aerial Ropeways, Suspension Bridges, &c.

WOOD BLOCK FLOORING—Goddard & Sons, Patent Wood Block Flooring Works, Farnham, Surrey.

WOOL (PURE) WEAR SHEETS, BLANKETS, &c.—Dr. Jaeger's Sanitary Woollen System Co., Ltd. Wholesale and Shipping: 95, Milton-street, London, E.C. Retail: 124, Regent-street, London, W.

Memoranda of Things Lent, &c.

Date.

Article.

To whom lent.

Returned.

NO ENTRIES

Memranda - entirely blank

Cash Account - entirely blank

These pages have been omitted.

-O-

NO HAY ENTRADAS

Memoranda - en blanco

Caja - en blanco

Se han omitido estas paginas.

REGISTER OF SPECIAL LETTERS.

Received.

Despatched.

FROM WHOM.

DATE OF
LETTER.

DATE
RECEIVED.

TO WHOM.

DATE
WRITTEN.

DATE
FORWARDED.

2 pagas a Horacio
21 recibos

570 -

DR. J. COLLIS BROWNE'S CHLORODYNE.

**Coughs,
Colds,**



**Asthma,
Bronchitis.**

THE ORIGINAL AND ONLY GENUINE.

CHLORODYNE is admitted by the profession to be the most wonderful and valuable remedy ever discovered.

CHLORODYNE is the best remedy known for Coughs, Colds, Consumption, Bronchitis, Asthma.

CHLORODYNE effectually checks and arrests those too often fatal diseases: Diphtheria, Fever, Croup, Ague.

CHLORODYNE acts like a charm in Diarrhoea, and is the only specific in Cholera and Dysentery.

CHLORODYNE effectually cuts short all attacks of Epilepsy, Hysteria, Palpitation, and Spasms.

CHLORODYNE is the only palliative in Neuralgia, Rheumatism, Gout, Cancer, Toothache.

THE ILLUSTRATED LONDON NEWS of Sept. 28, 1895, says:

"If I were asked which single medicine I should prefer to take abroad with me, so likely to be most generally useful, to the extinction of all others, I should say CHLORODYNE. I never travel without it, and its general applicability to the relief of a large number of simple ailments forms its best recommendation."

None genuine without the words "Dr. J. Collis Browne's Chlorodyne" on the Stamp.

Overwhelming Medical testimony accompanies each bottle.

Sold in Bottles by all Chemists at 1/4, 2/6, and 4/6 each.

Sole Manufacturers: J. T. DAVENPORT, Ltd., LONDON.

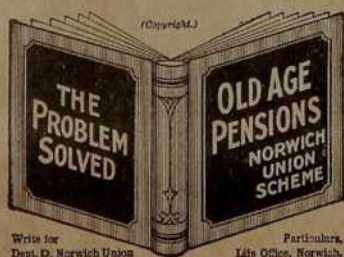
THE LAW FIRE INSURANCE SOCIETY..

114, Chancery Lane, LONDON.

Subscribed Capital = FIVE MILLIONS.

THE success which has attended the operations of the Society is founded on its strong financial position, the eligible character of the risks constituting the bulk of its business, and the promptitude and liberality with which its engagements are met.

Every facility is afforded to Solicitors for the transaction of insurance business on the most favourable terms.



EDUCATIONAL ANNUITIES AND ALL CLASSES OF ANNUITY OR LIFE INSURANCE TRANSACTED.

BRITISH GENERAL INSURANCE COMPANY, Ltd.

FIRE

ACCIDENTS

Moderate Rates.
Up-to-date Policies.
Prompt Settlements.

Liberal Agency
Terms to Gentlemen
with good Accounts.

General Manager: NORMAN M. WALKER.
Head Office—10, QUEEN STREET, LONDON, E.C.

ACCIDENT INSURANCE COMPANY

(Limited).

Accidents and Disease
All Sickness
Fidelity Guarantees
Workmen's Compensation
Third Party (Indemnity)
Motor Car
Plate Glass
Fire and Burglary
Live Stock &c. &c.

Founded 1849. Claims Paid, Approaching £2,000,000.

Apply for Particulars and Rates for Insurance.

10, ST. SWITHIN'S LANE, LONDON, E.C.
THOS. POTTER, General Manager and Secretary.

BIRKBECK BANK.

ESTABLISHED 1851.

CURRENT ACCOUNTS.—Current or Drawing Accounts are opened with Private Individuals or with Trading Firms. **Two per cent.** Interest is allowed on the minimum monthly balances when not drawn below £100.

DEPOSIT ACCOUNTS.—Deposit Accounts repayable on demand are opened with any sum. **Two-and-a-Half per cent.** Interest is allowed.

DEPOSIT RECEIPTS.—Deposit Receipts, subject to seven days notice of withdrawal, are issued at the Rate of Interest allowed by the leading London Bankers; alterations in the rate are announced by advertisement only.

STOCKS AND SHARES.—Stocks and Shares are purchased and sold for Customers of the Bank. Quotations of prices of any Stocks can be obtained without delay, the bank being in communication with their Stock Brokers by private telephone.

CUSTODY OF SECURITIES.—The Bank undertakes for Customers, free of charge, the safe custody of Bonds, Share Certificates, Title Deeds, etc., as well as the collection of Bills of Exchange, Dividends, and Coupons.

The Bank also acts as Agents for receiving the Pay and Pensions of Officers of the Army and Navy, at home and abroad.

COMMERCIAL UNION ASSURANCE COMPANY, Ltd.

In which is now merged the "HAND IN HAND FIRE AND LIFE INSURANCE SOCIETY."

FIRE—LIFE—MARINE—ACCIDENT.

Head Office:

24, 25 & 26, CORNHILL, E.C.

Capital Fully Subscribed - £2,500,000
Life Fund - - - - - £3,135,068

Total Funds Exceed Twelve Millions.

Total Annual Income exceeds - £3,000,000

**UNDOUBTED SECURITY. MODERATE RATES
PROMPT AND LIBERAL SETTLEMENTS.**

The Company is prepared to act as Trustees and Executors.

THE CERES WRITING COPIER

PATENTED.

PERFECTION AT LAST!
PRESS-COPYING AT AN
END!



ORDINARY PEN!
ORDINARY INK!
NOT MESSY!
NO TROUBLE!

A PERFECT COPY, and Letter shows no sign of having been copied.

A WRITING TABLE, holding its own supply of writing materials. Everything at hand.

Full particulars, with Specimen of Writing and Copy, on application; also Illustrated Catalogue of the Ceres Vertical System of Letter Filing in Boxes, Cabinets, etc., which is fast displacing all flat plans.

THE CERES DEPOT, 10, JOHN STREET, ADELPHI, LONDON.

LOOK AT YOUR TONGUE!

If your tongue is furred or discoloured, it shows that your stomach is out of order.



TAKE THE WARNING WHELPTON'S PURIFYING PILLS

will give you a clean tongue by setting your digestive organs in order.

Sold by all Chemists, 7d., 1/1 1/2 per Box.

WHELPTON, 4, CRANE COURT, FLEET STREET, E.C.

TIMES HAVE CHANGED



since the days of the old copyist and in the chain of pens which have come from the old days of the goose quill the last and most effective link is WATERMAN'S IDEAL. It is the one pen which is always ready to get down to business, to keep down

and to do its work at the desk without protesting.

To-day YOU should have

WATERMAN'S IDEAL FOUNTAIN PEN

THE
BEST MADE.

From 10s. In Silver and Gold for Presentation. Of Stationers and Jewelers, &c. Illustrated Booklet on these pens, post free, from L. & C. HARDTMUTH, 12, Golden Lane, London, E.C.

IS YOUR PENCIL A

KOH-I-NOOR

OR ONLY AN IMITATION?

The quality of a Koh-I-Noor is in the lead and in the finish. Each lead is wonderfully durable and will keep a fine point longer than any other pencil. The touch of the Koh-I-Noor cannot be equalled. There is no grit or hardness about any one of the grades, but a slicken velvety touch is the characteristic feature.

KOH-I-NOOR Pencils are 4s. each, 3s. 6d. per dozen everywhere. Of Stationers, Artists' Colourmen, Photographic Dealers, &c. Booklet, post free, from

L. & C. HARDTMUTH, 12, Golden Lane, London, E.C.

A COMPARISON.

- OUR system of vertical filing will lay before you any letter you have ever written or received—in ten SECONDS.
- OR—just as quickly—any collection of letters to and from a given correspondent, in one bunch, in order written.
- OR—just as quickly—all the letters to and from any number of correspondents concerning a given subject.

Compare this simple and instantaneous system with the old style letter books and flat files.

WRITE FOR ILLUSTRATED
CATALOGUE ON THE SUBJECT.

Card System

for every department of a
business house.

LIBRARY BUREAU, LTD.,

Business Systems,

10, BLOOMSBURY STREET, LONDON, W.C.

Manchester
Birmingham
Newcastle-on-Tyne

Branches:

12, Exchange Street.
204, Corporation Street.
Milburn House



Compare with this

"Shannon" and Vertical Filing in Sections.



Illustration shows sections apart.

Telephone: 1900 Wall.

F. W. SCHAFER, Managing Director.

You can commence with one section, add a top and a base, and your cabinet is complete; then as your business grows you add another section of the same system, and still your Cabinet is a finished piece of Furniture.

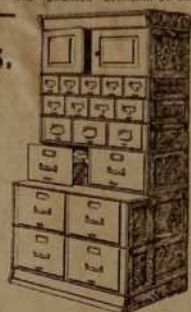
Write or Telephone for our Catalogue L.890.

By adopting the "Shannon" Sectional System

you can combine Letter Filing and Card Indexing

in one Cabinet. All Sections are interchangeable and require no fixing.

The "Shannon" Sectional System.



Corner.
Storage section.
3 x 4 Card Index section.
5 x 4 Card Index section.
5 x 4 Card Index section.
Vertical filing section.
Vertical filing section.
Vertical filing section.
Base.

THE SHANNON Ltd.,

OFFICE FITTING SPECIALISTS,

Ropemaker Street, LONDON, E.C.



THE LIVERPOOL & LONDON & GLOBE INSURANCE COMPANY.

HEAD OFFICE: 1, DALE STREET, LIVERPOOL.

FIRE

LONDON:

Chief Office: 1, CORNHILL.

Branches: 56, CHARING CROSS.
41, MINCEING LANE.

LIFE

Other Branches in all important Centres in the United Kingdom.

TOTAL

ASSETS

EXCEED

£11,000,000

FOREIGN & COLONIAL BRANCHES:

NEW YORK.
CHICAGO.
NEW ORLEANS.
SAN FRANCISCO.
MONTREAL.
SYDNEY.

MELBOURNE.
PERTH, W.A.
ADELAIDE, S.A.
CHRISTCHURCH, N.Z.
TOWNSVILLE, N.Q.
LAUNCESTON, Tas.
PARIS & HAMBURG.

NEWCASTLE, N.S.W.
EAST LONDON.
JOHANNESBURG.
CAPE TOWN.
PORT ELIZABETH.
DURBAN.

PEARL LIFE ASSURANCE COMPANY, Ltd.

Chief Offices: LONDON BRIDGE, E.C.

| | | |
|------------------------|---|-------------|
| ACCUMULATED FUNDS OVER | - | £3,000,000. |
| ANNUAL INCOME | - | £1,600,000. |
| CLAIMS PAID OVER | - | £5,000,000. |

Dividends declared yearly on participating policies and vest immediately in the event of death. Bonus for 1905, 80s. per cent.

Fixed Cash Surrender Values.

District Offices in all Provincial Towns.

BRITANNIC ASSURANCE Co., LTD.

(FORMERLY CALLED BRITISH WORKMAN'S AND GENERAL.)

Established 1866.

INDUSTRIAL AND ORDINARY BRANCHES.

| | | |
|---------------|---|----------------------|
| ANNUAL INCOME | - | - exceeds £1,000,000 |
| RESERVE FUNDS | - | - exceed £1,600,000 |
| CLAIMS PAID | - | - £4,800,000 |

Gentlemen able to influence good business will find the Company's Agency terms very remunerative.

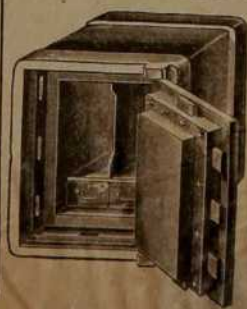
Agency Terms and Prospectuses on application to

S. J. PORT, Secretary.

Chief Offices:—BROAD ST. CORNER, BIRMINGHAM.

WHITFIELD'S SAFES

AND
STEEL
DOORS.



Oxford Street,
BIRMINGHAM.

Godliman House,
Godliman Street,
LONDON, E.C.

Remington

means

TYPEWRITER.

LONDON,

100, GRACECHURCH STREET, E.C.;

322, REGENT STREET, W.;

AND EVERYWHERE.

GEORGE SMYTHE & SON, Paper Makers and Contractors,

ST. BARTHOLOMEW HOUSE, 90-93, FLEET STREET, LONDON.

(Formerly of 46, Cannon Street, E.C.)

SUPERFINE, FINE AND COMMON PRINTINGS.

FRICITION GLAZED AND SUPER CALENDERED PRINTING FOR PROCESS WORK.
White and Tinted News in Webs and Sheets. Fine Art Papers.

ENGINE-SIZED AND TUB-SIZED WRITING PAPERS.

Azure Laid and Yellow Wove and every Description of Papers for Account Books.

ENGLISH AND FOREIGN TINTED WRITINGS AND PRINTINGS.

Telephones: { Holborn, 887.
Post Office, Central 8364.

Telegrams: "C'ILVERKEY, LONDON.

And PARIS.

HARRIS & PEARSON,

Manufacturers *Stourbridge Fire Clay*

of . . .

Gas Retorts, Lumps, Tiles & Bricks

of every description.

BEST GLASS-HOUSE POT CLAY & CRUCIBLE CLAYS.

Goods Made to Engineers' Drawings.

Fire Bricks for Intense Heats.

SPECIAL BOILER SEATING BLOCKS, FLUE COVERS

And Surface Covering Bricks for all kinds of Boilers.

LARGE STOCKS

Glazed Bricks, Grate Backs, Staffordshire Blue Bricks, Porcelain Baths

Telegrams: "FIRECLAY, STOURBRIDGE."

A B C Code (5th Ed. Use).

Telephone: BRILEY HILL, No. 7.

Stourbridge, ENGLAND.

NORTHERN

ASSURANCE COMPANY.

Fire Premiums £112,000.

Life Premiums £275,800.

Accumulated Funds £243,300.

Accumulated Funds £102,100.

10, Abchurch Lane, London, E.C. 4.

1, JERDE Street, Union Terrace.